

U.S. PUBLIC LAND SURVEY
MONUMENT RECORD

NOTE: This form is intended and designed to fulfill all requirements of Wisconsin Administrative Code, Chapter A-E 7.08 U.S. Public Land Survey Monument Record (3) (a-l)

A-E 7.08(3)(a) Identity of corner:
South 1/4 Corner Section 19,
Township 37 North, Range 16 East
of the Fourth Principal Meridian,
Town of Armstrong Creek, Forest County,
Wisconsin

WISCRS - FOREST COUNTY
N: 605,045.839 USft (XXX,XXX.XXX)
E: 929,163.016 USft (XXX,XXX.XXX)
Datum: NAD83 (2011)
GNSS Method RTK
GNSS Control WISCRS VRS

The coordinate value shown has been verified by the average of two or more GPS observations at a markedly different time. Coordinates shown in parenthesis are previously published values.

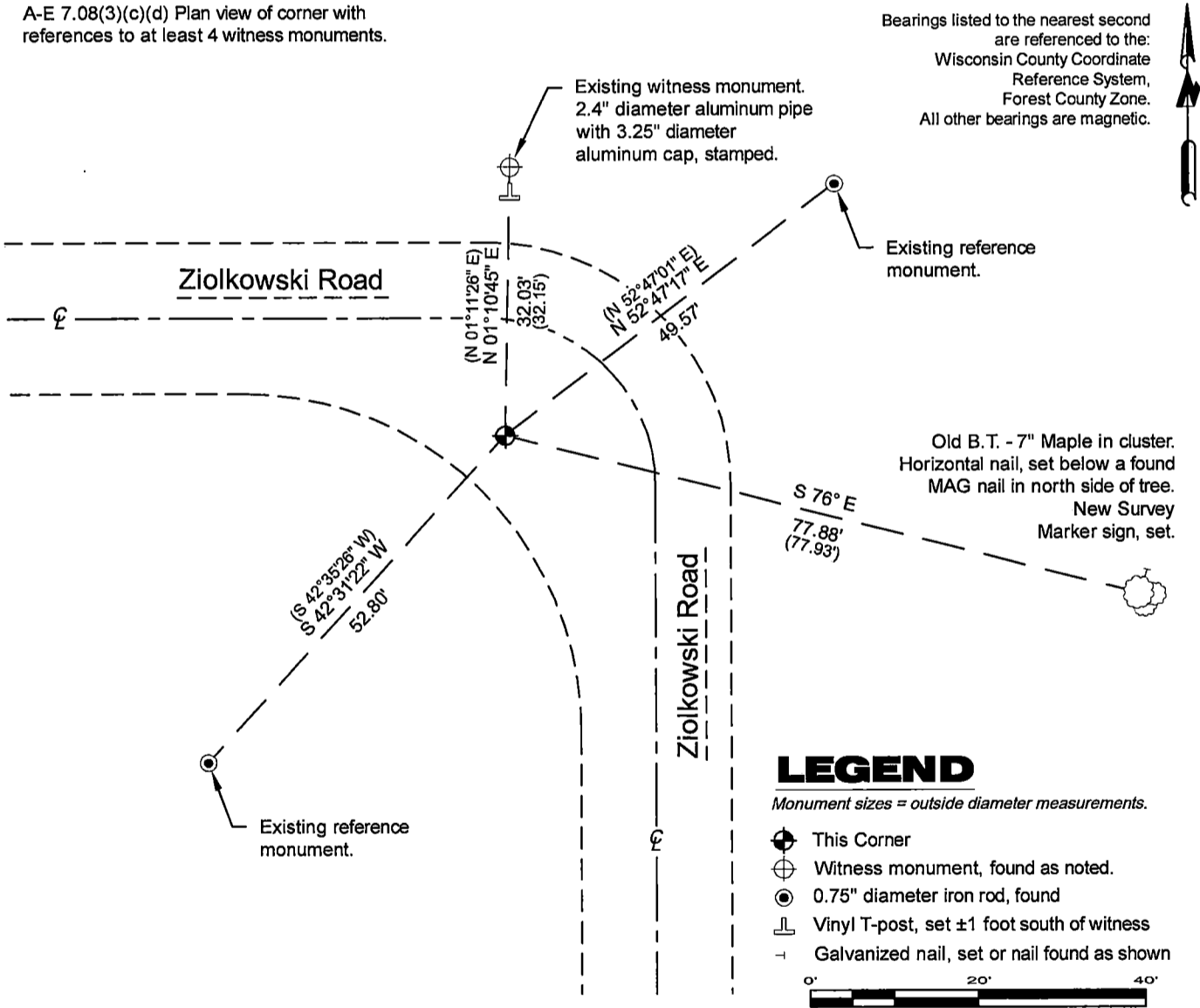
A-E 7.08(3)(b)

Original Surveyor: James McBride - July 11, 1859 to July 16, 1859
W. Pine 18 - N 21° E, 33 Links, W. Pine 18 - S 27° E, 53 Links

See previous U.S. Public Land Survey Monument Record - R3 - November 11, 2018 - Surveyor 3029 - Chad A. Besaw - THENCE:

March 10, 2025 - I found a standard size MAG nail. The monument is ±18 feet west and ±14 feet south of the Ziolkowski Road centerline, I also found 4 of Besaw's reference monuments.
I established 0 new reference monuments as shown below.

A-E 7.08(3)(c)(d) Plan view of corner with
references to at least 4 witness monuments.



A-E 7.08(3)(e) 1859 Surveyor set a post, 1986 Surveyor set a railroad spike and an aluminum witness monument, 2018 Surveyor found a "masonry nail" I found the same in 2025.

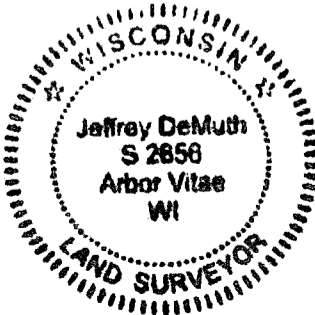
A-E 7.08(3)(f) I accept this monument in good faith as a FOUND PERPETUATED LOCATION of the corner.
A-E 7.08(3)(g)(h) This corner was not determined through lost-corner-proportionate methods.

A-E 7.08(3)(i) I, Jeffrey L. DeMuth, Professional Land Surveyor No. S-2656, hereby certify that the corner location on this record was determined by me or under my direction and control, and that this U.S. Public Land Survey Monument Record is correct and complete to the best of my knowledge, and belief.

SIGNATURE

March 14, 2025

DATE



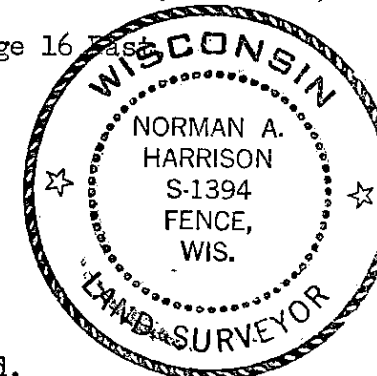
43716190020

43716190020

R3

CERTIFIED LAND CORNER RESTORATION

Index No. R-3



State of Wisconsin }
County of Forest } ss.

I, Norman A. Harrison, do hereby certify that on the 8th day of August, 1985, I found evidence of the north quarter corner of Section 30 Township 37, North, Range 16, Fourth Principal Meridian, as described hereon; and that from this evidence I established a new monument and accessories as described hereon to perpetuate the original location of this corner.

Resident witnesses:

History of original corner establishment: Subdivision of Township 37 North, Range 16 East 4th Principal Meridian by James McBride, Deputy Surveyor.
Commenced July 11, 1859 - Finished July 16, 1859
50.65 Set quarter section post
W. pine 18 N 21 E 33 lks
W. pine 18 S 27 E 53 "

Description of corner evidence found: No evidence of original corner found.
Found 3 way intersection of Town Roads, fence corners at 1/16 corners along the North line of the section and along the North-south quarter line.
Accepted point in road intersection as best evidence of original corner location - see sketch on back of this sheet.

Description of monument and accessories I established to perpetuate the original location of this corner.

Set railroad spike at corner in bituminous road.
Set Forest County Aluminum monument as Witness Monument.
North 32.00 feet

Other bearing objects or trees, from corner

Telephone riser	N 58° 25' E	52.75 feet
14" Basswood	S 58° 40' E	44.50 feet
Electric Power Pole	S 10° 00' E	171.70 feet
1 1/4" iron pipe, set	S 81° 05' W	24.77 feet

Bearings referenced to Magnetic North

Dated at Fence, Wis., this 18 day of December, 1986

Signature Norman A. Harrison Title Surveyor Registration No. 1394
(County Surveyor, Registered Land Surveyor, or other duly authorized official)

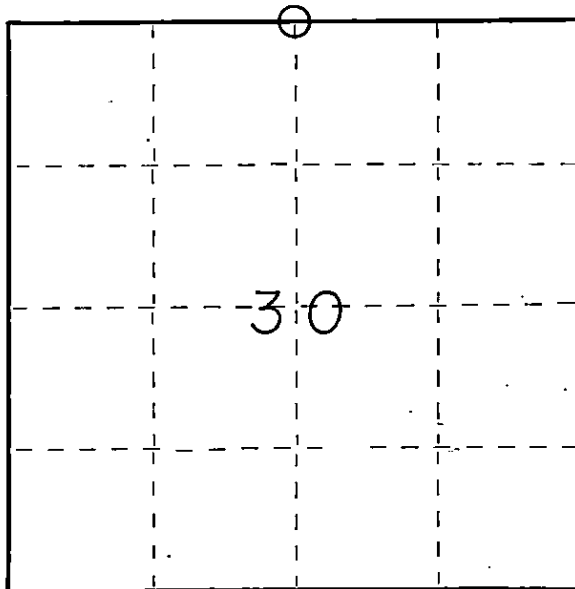
Office of Register of Deeds, County of Forest, I hereby certify that the within instrument was filed in this office for record on the 18th day of December, 1986 at 11:00 o'clock A. M.

Paul Aschenbrenner
(Register of Deeds)

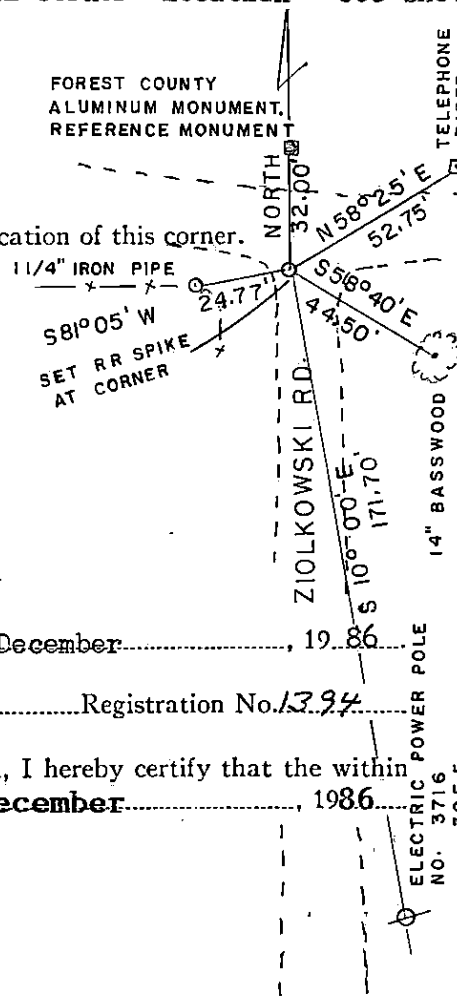
By _____ Deputy

DOCUMENT NUMBER
131740

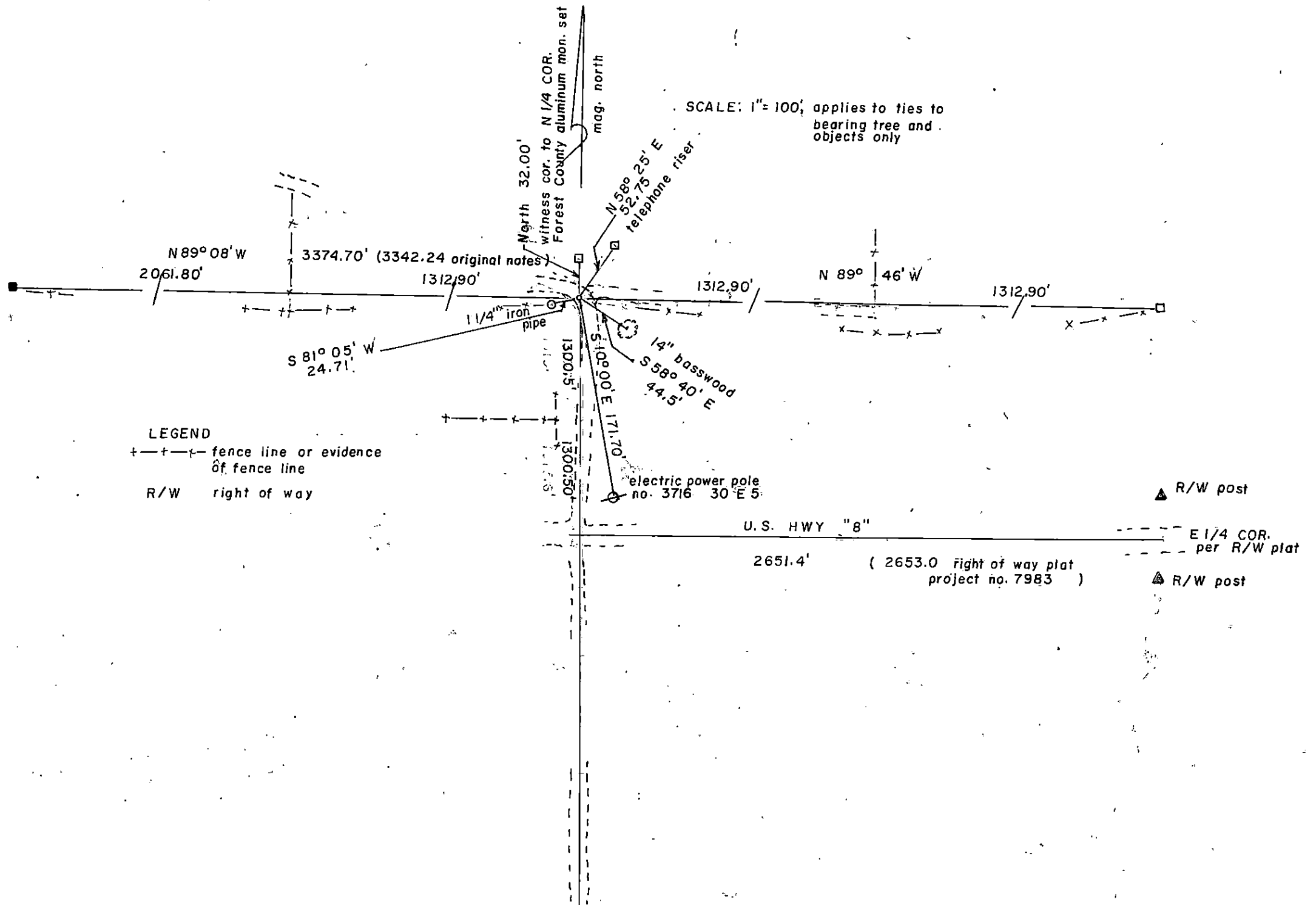
FORM 985 R. C. MILLER CO., MILWAUKEE



○ = Corner monument restored.



43716190020



U.S. PUBLIC LAND SURVEY MONUMENT RECORD

Note: This form is intended and designed to fulfill all requirements of Wisconsin Administrative Code, Chapter A-E 7.08 U.S. Public Land Survey Monument Record (3)(a)(b)(c)(d)(e)(f)(g)(h)(i). An additional sheet may be added to if necessary to conform with said requirements.

(a) Corner Location: South Quarter Corner
Section 19,
Township 37 North,
Range 16 East,
Town of Armstrong Creek,
Forest County, Wisconsin

FOREST COUNTY, WI
CORTNEY BRITTEN CLEEREMAN
REGISTER OF DEEDS
RECEIVED FOR RECORD

DEC 19 2018

Time: 9:00 A.M.
Vol: Corner Restoration
Page Number: R-3

19

SEC 19-T37N-R16E

(b)(f)(g)(h) Description of monument found at this corner and if it was accepted, state all evidence (material, testimonial, occupational, plats, records, other monuments) used as a basis for accepting. If not accepted or if nothing was found, state evidence used as basis for establishing location. If reestablishment through lost corner proportionate methods, indicate all monuments, distances and directions used to establish. Indicate type of monument found or set and sign post.

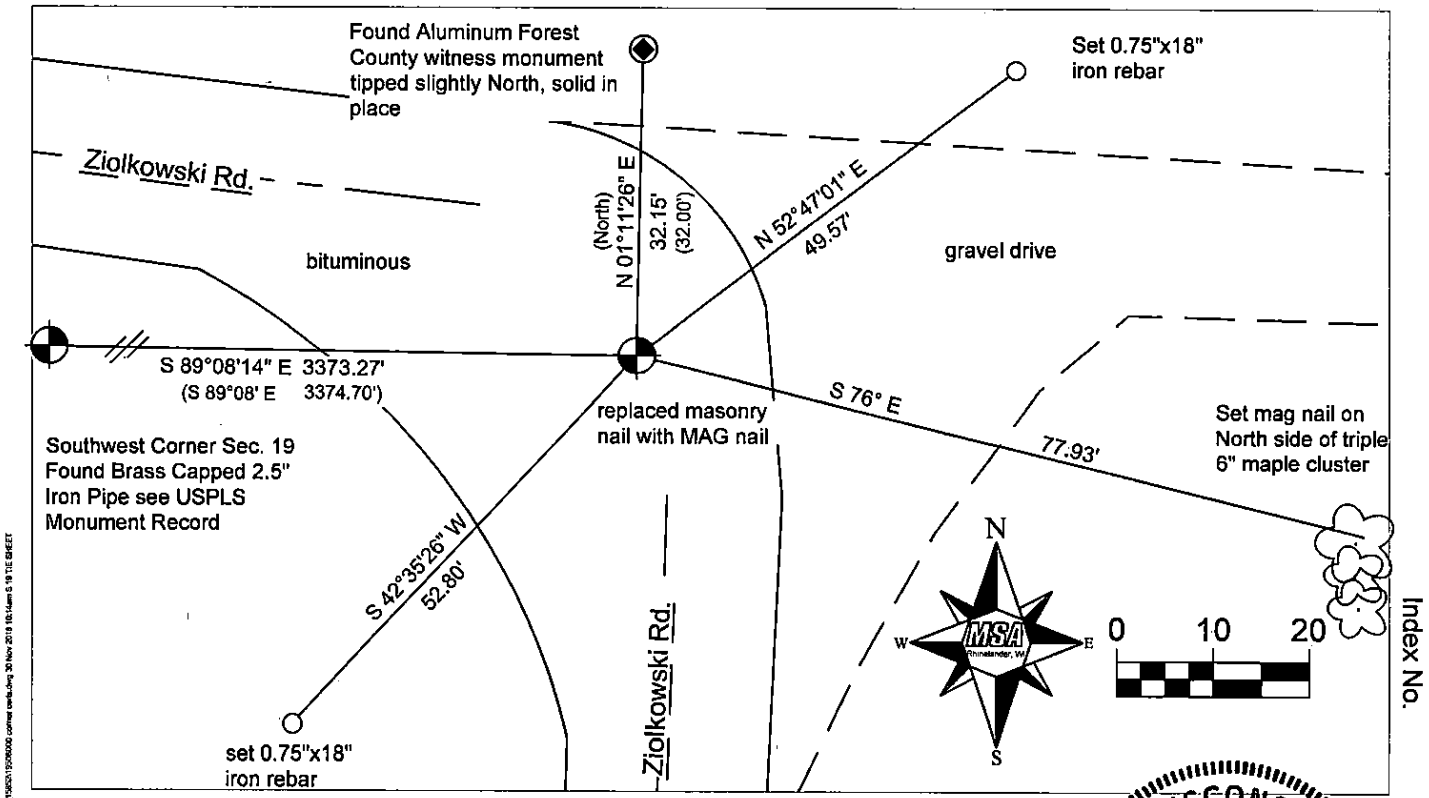
1859 July - James McBride - Set Quarter Section Post. W Pine 18 N21°E, 33 lks, W Pine 18 S27°E, 53 lks.

1985 August - Norman A. Harrison, S-1394, states, "No evidence of original corner found. Found 3 way intersection of Town Roads, fence corners at 1/16 corners along North line of the section and along the North-South quarter line. Accepted point in road as best evidence of original corner location." Set railroad spike at corner in bituminous road. Witnessed with:
Forest County Aluminum Reference Monument - North 32.00 feet,
Telephone Riser - N58°25'E, 52.75 feet
14" Basswood - S58°40'E, 44.50 feet
Electric Power Pole no 3716 30E5 - S10°00'E, 171.70 feet
1 1/4" iron pipe, set - S81°05W, 24.77 feet

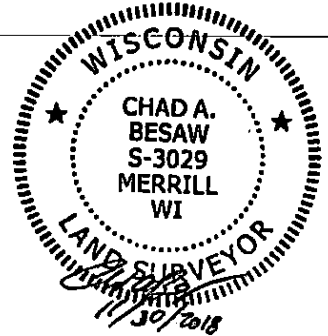
----- various surveys - road resurfaced - railroad spike was at some time replaced with a masonry nail.

2018 September - Chad A. Besaw - Found and accepted masonry nail and Forest county aluminum witness monument. All other witness ties were either obliterated or disturbed beyond use, utilities in area have been repaired/replaced. I replaced the masonry nail with a Mag nail and witnessed as shown below.

(c)(d)(e) Plan view of corner with ties to at least 4 witness monuments. If in disagreement with previously established corner, show the distances between the two corners and also indicate the ties to the disputed corner.



(i) I, Chad A. Besaw, Professional Land Surveyor #S-3029, hereby certify that the corner location on this record was determined by me or under my direction and control and that this U.S. Public Land Survey Monument Record is correct and complete to the best of my knowledge and belief.



Chad A. Besaw
Signature

11/30/2018
Date

43716190020

23