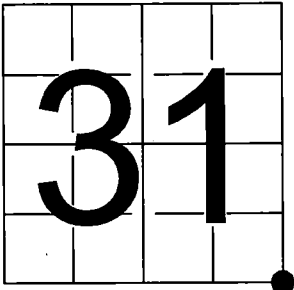


U.S. PUBLIC LAND SURVEY
MONUMENT RECORD

NOTE: This form is intended and designed to fulfill all requirements of Wisconsin Administrative Code, Chapter A-E 7.08 U.S. Public Land Survey Monument Record (3) (a-l)

A-E 7.08(3)(a) Identity of corner:
Southeast Corner Section 31,
Township 37 North, Range 16 East
of the Fourth Principal Meridian,
Town of Armstrong Creek, Forest County,
Wisconsin

WISCRS - FOREST COUNTY
N: 594,552.933 USft (XXX,XXX.XXX)
E: 931,763.795 USft (XXX,XXX.XXX)
Datum: NAD83 (2011)
GNSS Method RTN
GNSS Control WISCORS VRS



The coordinate value shown has been verified by the average of two or more GPS observations at a markedly different time. Coordinates shown in parenthesis are previously published values.

A-E 7.08(3)(b)

Original Surveyor: Artemas Curtis - March 1857
Yellow Birch 8 - N 60° W, 20 Links, Yellow Birch 12 - N 4° E, 23 Links, Yellow Birch 12 - S 82° E, 15 Links, Yellow Birch 8 - S 74° W, 5 Links

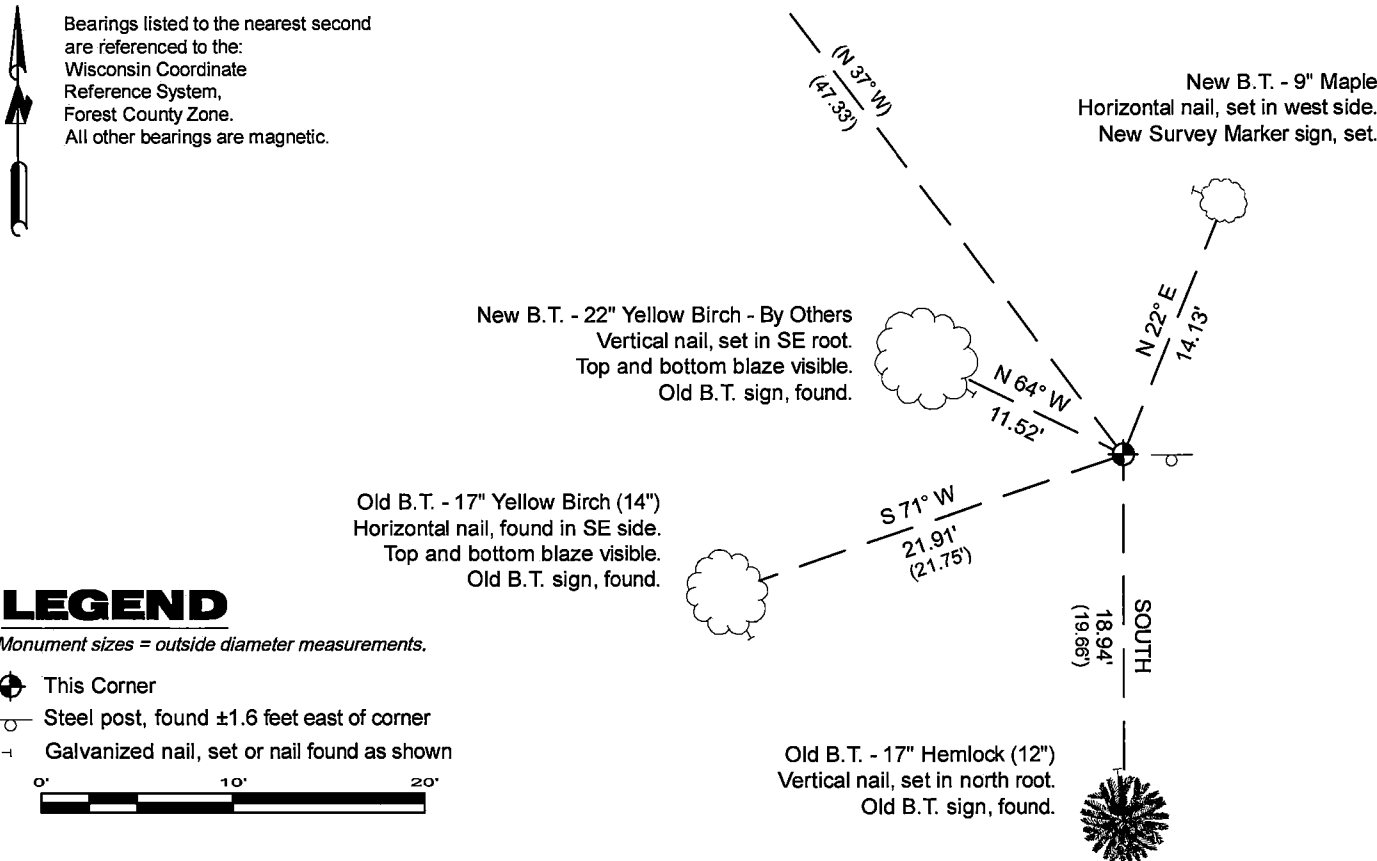
See previous U.S. Public Land Survey Monument Record - A 5 - December 14, 1985 - Surveyor 1651 - Alan D. Harrison - THENCE:

- 1993 - Surveyor 1685 - John R. Garske - indicates this position as "found aluminum capped pipe" on county record Map #361605-19940304.

August 19, 2025 - I found a 2.4" diameter aluminum pipe monument with a 3.25" diameter aluminum cap stamped to identify the corner location. The monument is in a pile of rock, in lowland hardwoods, and extends ±18" above grade. It is leaning north (±3" out of plumb), solid in the ground, I measured the center top of the monument cap. I also found 3 of Harrison's bearing trees alive and in good condition, and 1 dead and standing.

I established 2 new reference monument as shown below.

A-E 7.08(3)(c)(d) Plan view of corner with references to at least 4 witness monuments.



LEGEND

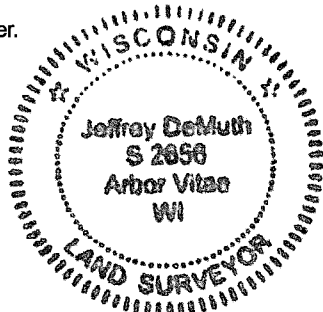
Monument sizes = outside diameter measurements.

- ⊕ This Corner
- Steel post, found ±1.6 feet east of corner
- ⊖ Galvanized nail, set or nail found as shown

A-E 7.08(3)(e) 1857 Surveyor set a post, 1984 Surveyor found a wood post and set a 2" aluminum monument, 1993 Surveyor found similar. I found 2.4" diameter aluminum pipe monument with a 3.25" diameter aluminum cap stamped to identify the corner location in 2025.

A-E 7.08(3)(f) I accept this monument in good faith as a FOUND PERPETUATED LOCATION of the corner.
A-E 7.08(3)(g)(h) This corner was not determined through lost-corner-proportionate methods.

A-E 7.08(3)(i) I, Jeffrey L. DeMuth, Professional Land Surveyor No. S-2656, hereby certify that the corner location on this record was determined by me or under my direction and control, and that this U.S. Public Land Survey Monument Record is correct and complete to the best of my knowledge, and belief.



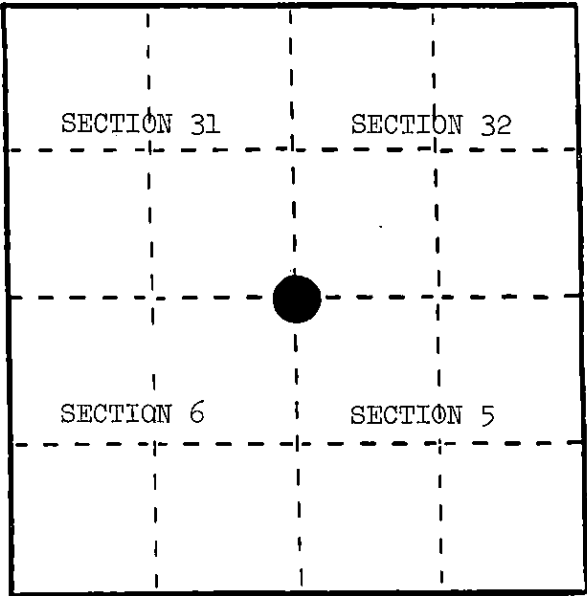
SIGNATURE _____ DATE September 16, 2025

U. S. PUBLIC LAND SURVEY MONUMENT RECORD

INSTRUCTIONS: This record shall show the location of the corner and shall include all of the following nine elements (a through i).

- (a) Identify the corner by reference to the U.S. public land survey system.
- = Corner monument restored.

Section corner to Sections 5, 6, 31, and 32, T.36-37N., R.16E.



- (b) Describe any record evidence, monument evidence, occupational evidence, testimonial evidence or any other material evidence you considered, and whether the monument was found or placed.

In 1857, Artemas Curtis set post with the following BTs: Yellow Birch, 8", N.60°W., 20 links; Yellow Birch, 12", N.4°E., 23 links; Yellow Birch, 12", S.83°E., 15 links; Yellow Birch, 8", S.74°W., 5 links. Swamp edge, 2 chains east.

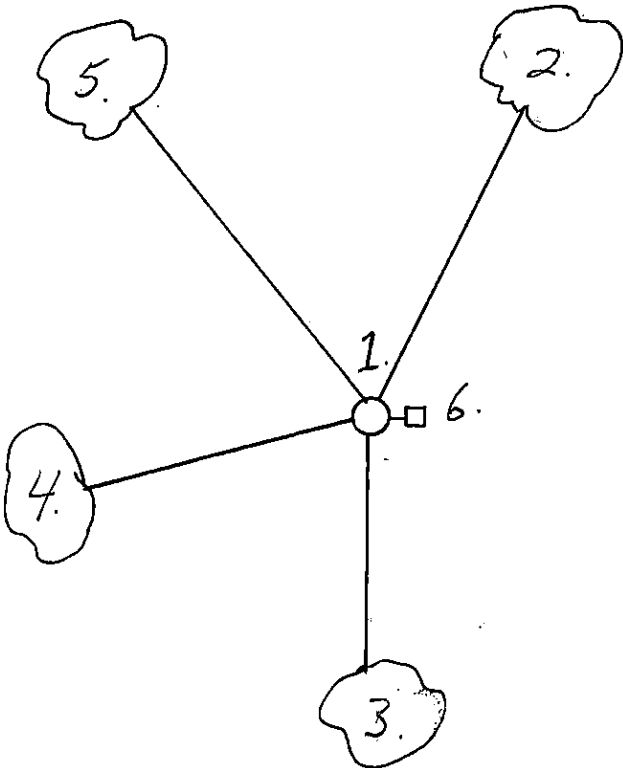
In the 1930s, CCC cruiser, unknown name and date, found squared stake and Yellow Birch, 14", 30 links. Put poster on Hemlock, 7", S.38°E., 10 links.

November 30, 1984, Alan Harrison found 3" scribed wood post and picket from which the following bear: Yellow Birch (blazes visible), N.60°W., 13.20'; Yellow Birch stump, N.4°E., 15.2'; stump mound, S.83°E., 9.9'; stump depression, S.74°W., 3.3'; 14" Hemlock with location poster, S.38°E., 6.7'.

- (c) In the plan view drawing below, provide reference ties to at least 4 witness monuments, or, if the location is within a municipality, to at least 2 witness monuments. (Witness monuments shall be made of concrete, natural stone, iron or other equally durable material.) Describe witness monuments.

- (d) Show a plan view drawing depicting the relevant monuments and reference ties which is sufficient in detail to enable accurate relocation of the corner monument if the corner monument is disturbed. Indicate north.

- 1. 2" x 30" aluminum monument stamped to identify the corner.
- 2. Yellow Birch, 18", N.22°E., 47.63'
- 3. Hemlock, 12", South, 19.66'
- 4. Yellow Birch, 14", S.71°W., 21.75'
- 5. Hemlock, 14", N.37°W., 47.39'
- 6. Steel Sign Post, East, 1.59'



REGISTER'S OFFICE }
Forest County, Wis. }
Received for record this 23rd day
of January, A.D., 1985 at
9:00 o'clock A.M. and
recorded in Vol. CORNER RESTORATION
on page A-5
Paul A. Schenck
REGISTER

- (e) Describe any material discrepancy between the location of the corner as restored or reestablished and the location of that corner as previously restored or reestablished by distance and direction. Show the discrepancy on the plan view drawing under (d), above. Show the distances between the corner as previously restored or reestablished and (1) the corner as restored or reestablished, and (2) to at least 2 of the witness monuments shown on the drawing in (d), above.

None.

- (f) Was the corner restored through acceptance of (1) an obliterated evidence location, or, (2) a found perpetuated location?

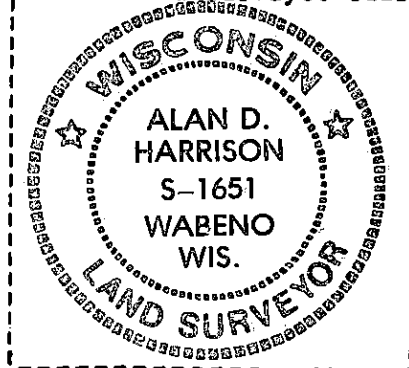
(2) a found perpetuated location.

- (g&h) Was the corner reestablished through lost corner proportionate methods? If so, show the method, including the directions and distances to other public land survey corners used as evidence or used for proportioning in determining the corner location?

No.

116

Affix Land Surveyor Seal



- (1) I, Alan D. Harrison
(type or print name) certify that the corner location shown on this record was determined by me or under my direction and control and that this U.S. Public Land Survey Monument Record is correct and complete to the best of my knowledge and belief.

Alan D. Harrison 12/14/84
Signature Date