

FILED ON:
01/28/2025 02:33 PM
CORTNEY BRITTEN CLEEREMAN
REGISTER OF DEEDS
FOREST COUNTY WI
PAGES: 1
INDEX#:

FOREST COUNTY SURVEY MONUMENT RECORD

NOTE: This form is intended and designed to fulfill all requirements of Wisconsin Administrative Code, Chapter A-E 7.08 U.S. Public Land Survey Monument Record (3) (a-1)

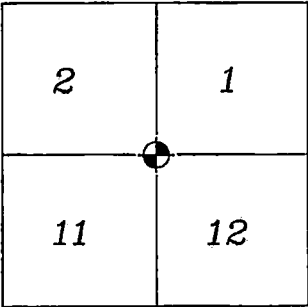
SECTION CORNER COMMON
TO SECTIONS 1, 2, 11, 12
TOWNSHIP: 38N
RANGE: 13E
TOWN OF ARGONNE

TYPE OF MONUMENT: RR SPIKE

WISCRS FOREST COUNTY
NORTHING: 652835.37'
EASTING: 857218.01'
DATUM: NAD83 (2011)
METHOD NETWORK RTK

FIELD WORK DATE: 10/16/2024
COMPANY: PAYNE AND DOLAN

FOUND:☒
SET:☐
RESET:☐
RETIED:☐



CORNER LOCATION
INDICATED BY:



BASIS FOR MONUMENT LOCATION:
(DESCRIBE METHOD OF SURVEY AND CORNER AUTHENTICATION)

HISTORY:
In 1865, H. Nowlin and J. L. Nowlin set section corner post with the following BTs: Birch, 15" N.10°E., 20 links; Hemlock 20", N.29°W., 24 links.

FOUND RR SPIKE AT CORNER LOCATION AND 4 OF THE 4 TIES. REFERENCED TIE SHEET FROM S-1107 DATED 01-04-95.

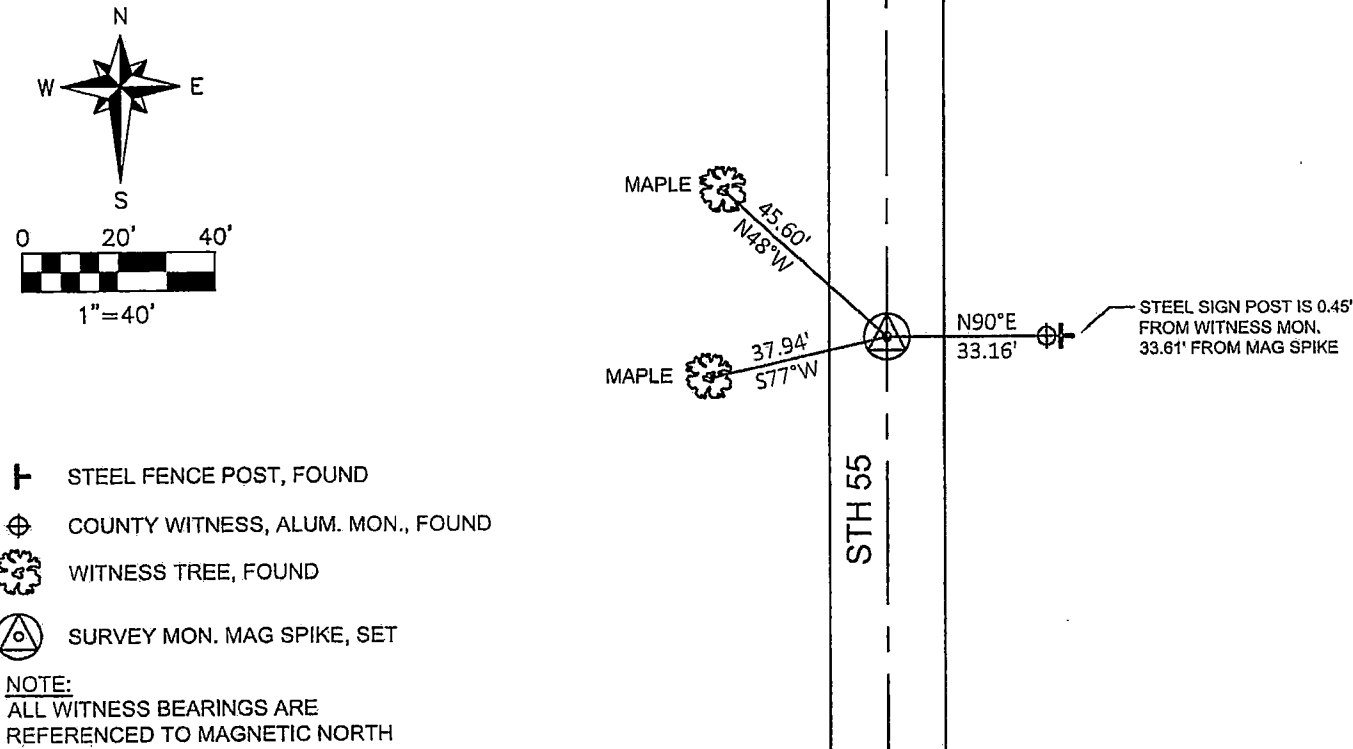
STH 55, REPAVED FALL 2024.
RR SPIKE REMAINS IN PLACE.
SET MAG SPIKE AT GRADE ON NEWLY PAVED ROAD DIRECTLY ABOVE THE RR SPIKE, DERIVED FROM RTK COORDINATES.

I accept this momument in good faith as a FOUND PERPETUATED LOCATION of the corner and was not determined through lost-corner-proportionate methods.

I, Rebecca A. DesRochers, Professional Land Surveyor No. 3170, hereby cerify that the corner location on this record was determined by me or under my direction and control, and that this U.S. Public Land Survey Monument Record is correct and complete to best of my knowledge, and belief.

Rebecca A. DesRochers 01/21/2025
PROFESSIONAL LAND SURVEYOR DATED

TIE SKETCH



Stock No. 26273

156553

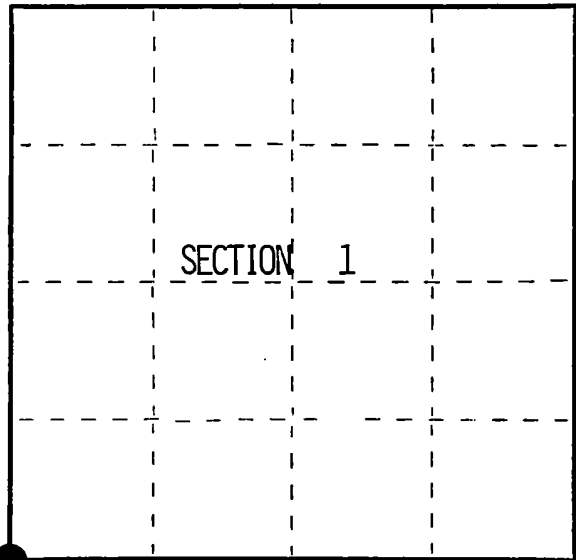
U.S. PUBLIC LAND SURVEY MONUMENT RECORD

Index No. E-21

State of Wisconsin }
County of Forest } ss.

I, William B. Cochrane, do hereby
certify that on the 26th day
of April, 1992, I found
evidence of the Southwest Section
corner of Section 1
Township 38
13 East, North, Range
Fourth Principal Meridian,
as described hereon; and that from this evidence
I established a new monument and accessories
as described hereon to perpetuate the original
location of this corner.

Resident witnesses:



○ = Corner monument restored.

History of original corner establishment:

Original Government Survey by H. & J. L. Nowlin in August 1865.
North between sections 11 and 12 at 80 chains set post from which:

Birch	15"	N10°E	20 lks
Hemlock	20"	N29°W	24 lks

Description of corner evidence found:

No corner evidence was found.

Description of monument and accessories I established to perpetuate the original location of this corner.
At proportionate distance one mile North and two miles south to existing corners and
using the center line of State Highway 33. Set a railroad spike flush in the road surface
and set a reference monument East at 33.16 feet, from which the following bear:

Maple	6"	S77°W	37.94 feet
Maple	6"	N48°W	45.60 feet

Reference Monument 2½"X36" aluminum pipe with an aluminum cap stamped: T38N, R13E,

Reference Corner, S1, S2, S11, S12, West, 33.16 ft, 1992, S-1107.

Steel sign post	East	33.61 feet
-----------------	------	------------

Dated at Hiles, Wis., this 4th day of January, 1995

Signature William B. Cochrane Title Land Surveyor Registration No. S-1107
(County Surveyor, Registered Land Surveyor, or other duly authorized official)

Office of Register of Deeds, County of Forest, I hereby certify that the within
instrument was filed in this office for record on the 23rd day of August, 1996.
at 2:30 o'clock P. M.

(Register of Deeds)

By Paul Tomlin Deputy

43813020000

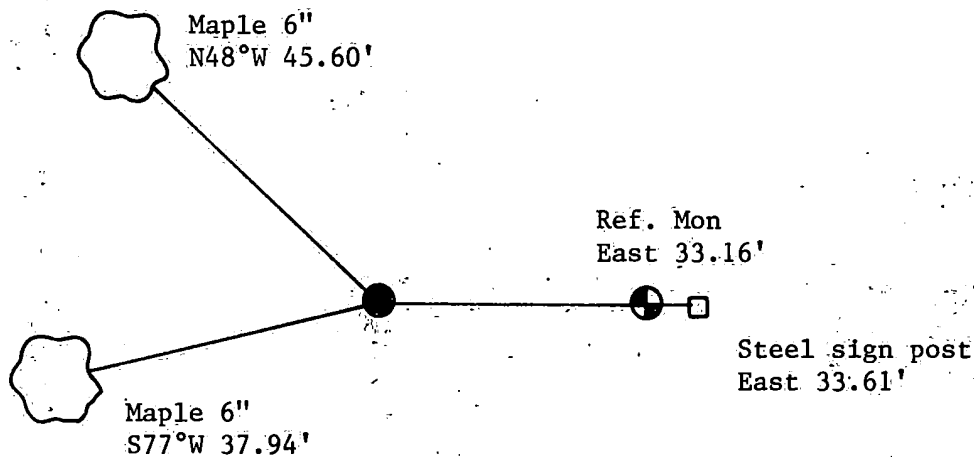
- (e) Describe any material discrepancy between the location of the corner as restored or reestablished and the location of that corner as previously restored or reestablished by distance and direction. Show the discrepancy on the plan view drawing under (d), above. Show the distances between the corner as previously restored or reestablished and (1) the corner as restored or reestablished, and (2) to at least 2 of the witness monuments shown on the drawing in (d), above.

See drawing below.

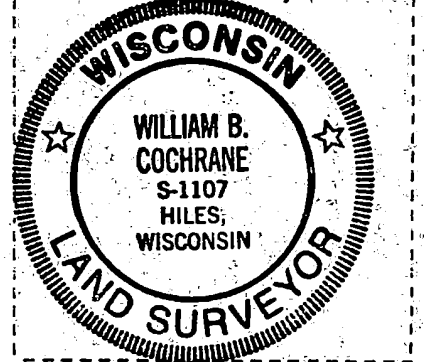
- (f) Was the corner restored through acceptance of (1) an obliterated evidence location, or, (2) a found perpetuated location?

Re-established by proportionate measurements North and South and center line of State Highway.

- (g&h) Was the corner reestablished through lost corner proportionate methods? If so, show the method, including the directions and distances to other public land survey corners used as evidence or used for proportioning in determining the corner location?



Affix Land Surveyor Seal



- (i) I, William B. Cochrane
(type or print name) certify that the corner location shown on this record was determined by me or under my direction and control and that this U.S. Public Land Survey Monument Record is correct and complete to the best of my knowledge and belief.

William B. Cochrane
Signature

1/4/95
Date