

FILED ON:
01/28/2025 02:33 PM
CORTNEY BRITTEN CLEEREMAN
REGISTER OF DEEDS
FOREST COUNTY WI
PAGES: 1
INDEX#:

FOREST COUNTY SURVEY MONUMENT RECORD

NOTE: This form is intended and designed to fulfill all requirements of Wisconsin Administrative Code, Chapter A-E 7.08 U.S. Public Land Survey Monument Record (3) (a-1)

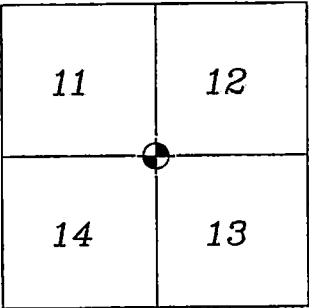
TYPE OF MONUMENT: RR SPIKE

WISCONSIN FOREST COUNTY
NORTHING: 647500.92'
EASTING: 857092.51'
DATUM: NAD83 (2011)
METHOD NETWORK RTK

FIELD WORK DATE: 10/16/2024
COMPANY: PAYNE AND DOLAN

SECTION CORNER COMMON
TO SECTIONS 11, 12, 13
& 14
TOWNSHIP: 38N
RANGE: 13E
TOWN OF ARGONNE

FOUND: ☒
SET: ☐
RESET: ☐
RETIED: ☒



CORNER LOCATION
INDICATED BY:



BASIS FOR MONUMENT LOCATION:

(DESCRIBE METHOD OF SURVEY AND CORNER AUTHENTICATION)

HISTORY:
In 1865, H. Nowlin and J. L. Nowlin set section corner post with the following BTs: Birch, 15" N.06°E., 38 links; Fir 8", N.50°W., 25 links.

FOUND RR SPIKE AT CORNER LOCATION AND 5 OF THE 6 TIES.
REFERENCED TIE SHEET FROM S-1107 DATED 01-05-95. SET 1 TIE TO REPLACE MISSING TIE.

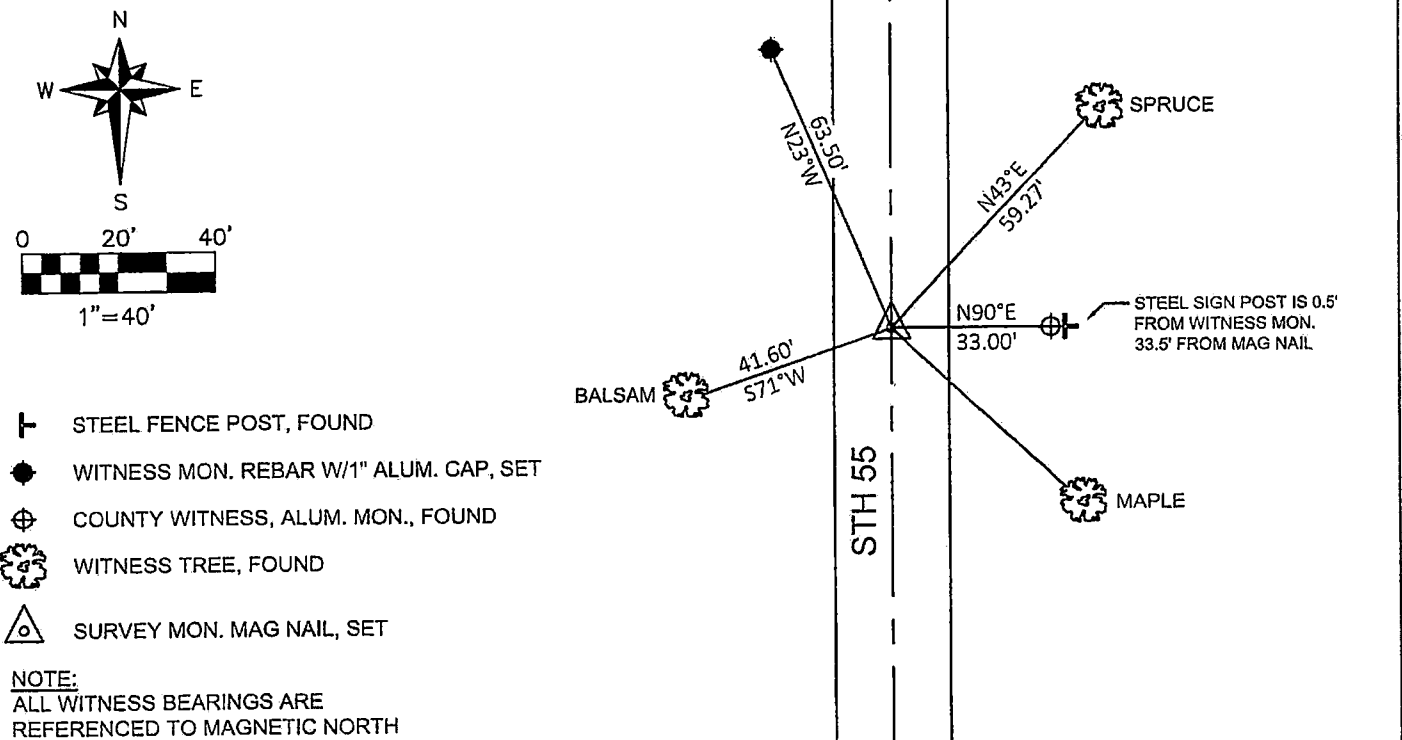
STH 55, REPAVED FALL 2024.
RR SPIKE REMAINS IN PLACE.
SET MAG NAIL AT GRADE ON NEWLY PAVED ROAD DIRECTLY ABOVE THE RR SPIKE, DERIVED FROM RTK COORDINATES.

I accept this monument in good faith as a FOUND PERPETUATED LOCATION of the corner and was not determined through lost-corner-proportionate methods.

I, Rebecca A. DesRochers, Professional Land Surveyor No. 3170, hereby certify that the corner location on this record was determined by me or under my direction and control, and that this U.S. Public Land Survey Monument Record is correct and complete to best of my knowledge, and belief.

Rebecca A. DesRochers 01/21/2025
PROFESSIONAL LAND SURVEYOR DATED

TIE SKETCH



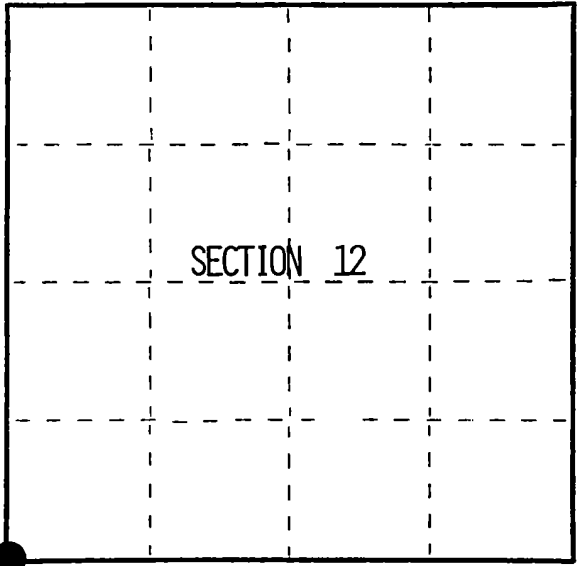
U.S. PUBLIC LAND SURVEY MONUMENT RECORD

Index No. J-21

State of Wisconsin }
County of Forest } ss.

I William B. Cochrane, do hereby
certify that on the 11 th day
of June, 19 92, I found
evidence of the Southwest Section
corner of Section 12
Township 38, North, Range
13 East, Fourth Principal Meridian,
as described hereon; and that from this evidence
I established a new monument and accessories
as described hereon to perpetuate the original
location of this corner.

Resident witnesses:



○ = Corner monument restored.

History of original corner establishment:
Original Government Survey by H. & J. L. Nowlin in August 1865.
North between sections 13 and 14 at 80 chains set post from which:
Birch 15" N06°E 38 lks
Fir 8" N50°W 25 lks

Description of corner evidence found:

No corner evidence was found.

Description of monument and accessories I established to perpetuate the original location of this corner.
At proportionate distance two miles North and one mile South to existing known corners
and using the center line of State Highway 55, set a railroad spike flush with the road
surface from which the following bear:
Spruce 12" N43°E 59.27 feet
Maple 8" S47°E 49.27 feet
Balsam 5" S71°W 41.60 feet
Spruce 9" N60°W 40.80 feet
Reference monument 2½"X36" aluminum pipe 2½ feet in the ground with an aluminum cap
stamped: Reference Monument, T38N R13E, S11, S12, S14, S13, West 33.00 ft, 1992, S-1107.
Steel sign post East 33.50 feet

Dated at Hiles, Wis., this 5 th day of January, 19 95.
Signature William B. Cochrane Title Land Surveyor Registration No. S-1107
(County Surveyor, Registered Land Surveyor, or other duly authorized official)
Office of Register of Deeds, County of Forest, I hereby certify that the within
instrument was filed in this office for record on the 23rd day of August, 19 96.
at 2:30 o'clock P. M.

(Register of Deeds)
By [Signature] Deputy

FORM NO. 985-A
McClellan Company
Stock No. 26273
156557

43813110000

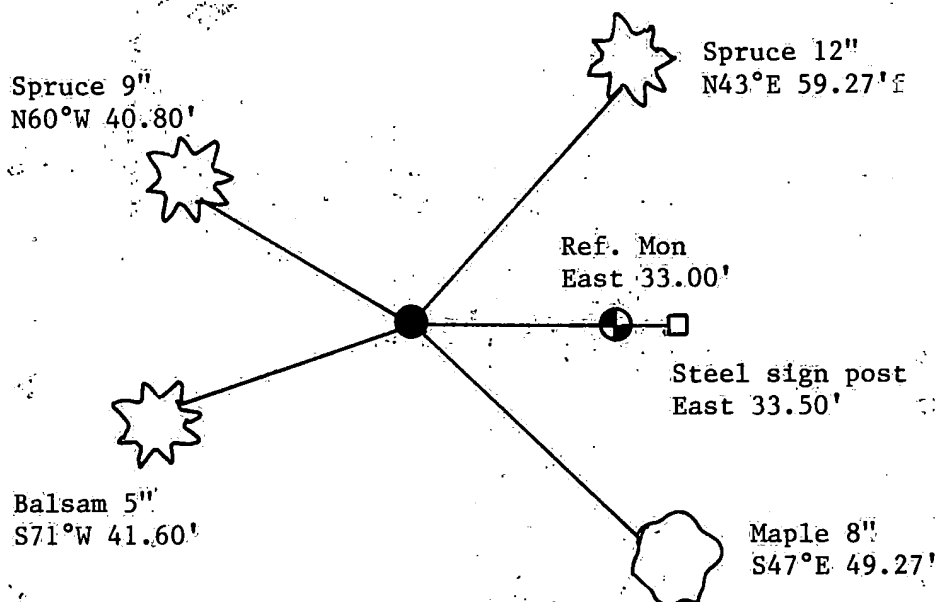
- (e) Describe any material discrepancy between the location of the corner as restored or reestablished and the location of that corner as previously restored or reestablished by distance and direction. Show the discrepancy on the plan view drawing under (d), above. Show the distances between the corner as previously restored or reestablished and (1) the corner as restored or reestablished, and (2) to at least 2 of the witness monuments shown on the drawing in (d), above.

See drawing below.

- (f) Was the corner restored through acceptance of (1) an obliterated evidence location, or, (2) a found perpetuated location?

Re-established through lost corner proportionate methods.

- (g&h) Was the corner reestablished through lost corner proportionate methods? If so, show the method, including the directions and distances to other public land survey corners used as evidence or used for proportioning in determining the corner location?



- (i) I, William B. Cochrane
(type or print name) certify that the corner location shown on this record was determined by me or under my direction and control and that this U.S. Public Land Survey Monument Record is correct and complete to the best of my knowledge and belief.

William B. Cochrane
Signature

1/5/95
Date