

FILED ON:  
01/28/2025 02:33 PM  
CORTNEY BRITTEN CLEEREMAN  
REGISTER OF DEEDS  
FOREST COUNTY WI  
PAGES: 1  
INDEX#:

FOREST COUNTY SURVEY MONUMENT RECORD

NOTE: This form is intended and designed to fulfill all requirements of Wisconsin Administrative Code, Chapter A-E 7.08 U.S. Public Land Survey Monument Record (9) (a-1)

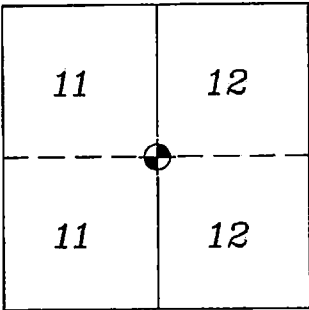
SECTION CORNER COMMON  
TO SECTIONS 11, 12  
TOWNSHIP: 38N  
RANGE: 13E  
TOWN OF ARGONNE

TYPE OF MONUMENT: RR SPIKE

WISCRS FOREST COUNTY  
NORTHING: 650069.56'  
EASTING: 857104.75'  
DATUM: NAD83 (2011)  
METHOD NETWORK RTK

FIELD WORK DATE: 10/16/2024  
COMPANY: PAYNE AND DOLAN

FOUND: ☒  
SET: ☐  
RESET: ☐  
RETIED: ☒



CORNER LOCATION  
INDICATED BY:

BASIS FOR MONUMENT LOCATION:  
(DESCRIBE METHOD OF SURVEY AND CORNER AUTHENTICATION)

HISTORY:  
In 1865, H. Nowlin and J. L. Nowlin set section corner post with the following BTs: Maple, 12" N.05°E., 20 links; Spruce 10", S.14°W., 13 links.

FOUND RR SPIKE AT CORNER LOCATION AND 2 OF THE 4 TIES.  
REFERENCED TIE SHEET FROM S-1107 DATED 01-04-95. SET 2 TIES TO  
REPLACE MISSING TIES.

STH 55, REPAVED FALL 2024.  
RR SPIKE REMAINS IN PLACE.  
SET MAG NAIL AT GRADE ON NEWLY PAVED ROAD DIRECTLY ABOVE THE RR  
SPIKE, DERIVED FROM RTK COORDINATES.

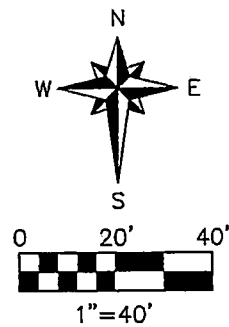


I accept this monument in good faith as a FOUND PERPETUATED LOCATION of the corner and was not determined through lost-corner-proportionate methods.

I, Rebecca A. DesRochers, Professional Land Surveyor No. 3170, hereby cerify that the corner location on this record was determined by me or under my direction and control, and that this U.S. Public Land Survey Monument Record is correct and complete to best of my knowledge, and belief.

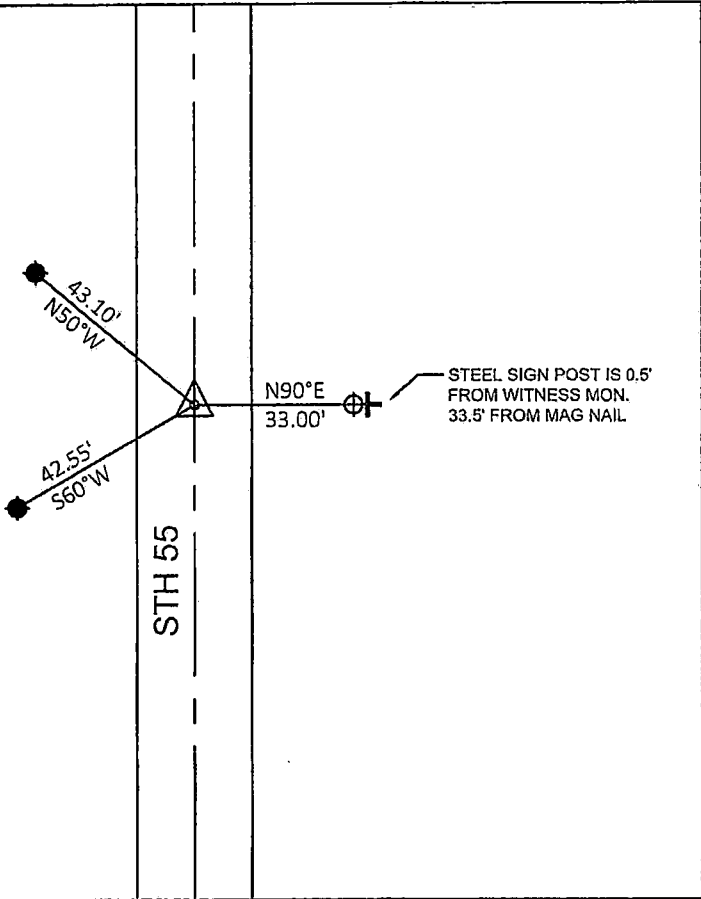
Rebecca A DesRochers 01/21/2025  
PROFESSIONAL LAND SURVEYOR DATED

TIE SKETCH



- STEEL FENCE POST, FOUND
- WITNESS MON. REBAR W/1" ALUM. CAP, SET
- COUNTY WITNESS, ALUM. MON., FOUND
- SURVEY MON. MAG NAIL, SET

NOTE:  
ALL WITNESS BEARINGS ARE  
REFERENCED TO MAGNETIC NORTH



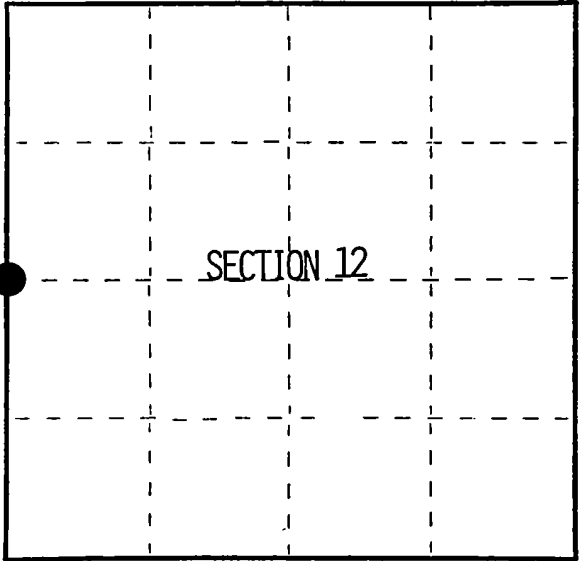
U.S. PUBLIC LAND SURVEY MONUMENT RECORD

Index No. G-21

State of Wisconsin }  
County of Forest } ss.

I William B. Cochran, do hereby  
certify that on the 30<sup>th</sup> day  
of April, 1992 I found  
evidence of the West Quarter  
corner of Section 12  
Township 38  
13 East, North, Range  
as described hereon; and that from this evidence  
I established a new monument and accessories  
as described hereon to perpetuate the original  
location of this corner.

Resident witnesses:



○ = Corner monument restored.

History of original corner establishment:  
Original Government Survey by H. & J. L. Nowlin in August 1865.  
North between sections 11 and 12 at 40 chains set post form which the following bear:  
Maple 12" N05°E 20 lks  
Spruce 10" S14°W 13 lks

Description of corner evidence found:  
  
No corner evidence was found.

Description of monument and accessories I established to perpetuate the original location of this corner.  
Corner position set by proportionate measurements one and one half mile North and  
South, and using the center line of State Highway 55. At the corner position set a  
Railroad spike flush in the road surface from which the following bear;  
Balsam 9" S37°W 69.00 feet  
Balsam 10" N62°W 47.06 feet  
Reference monument 2½"X36" aluminum pipe with an aluminum cap stamped: Reference  
monument, T38N, R13E, 1/4, S11, S12, 1992, West 33.00ft, S-1107.  
Steel sign post East 33.50 feet

Dated at Hiles, Wis., this 4<sup>th</sup> day of January, 1995  
Signature William B. Cochran Title Land Surveyor Registration No. S-1107  
(County Surveyor, Registered Land Surveyor, or other duly authorized official)  
Office of Register of Deeds, County of Forest, I hereby certify that the within  
instrument was filed in this office for record on the 23<sup>rd</sup> day of August, 1996  
at 2:30 o'clock P. M.

(Register of Deeds)  
By [Signature] Deputy

FORM NO. 985-A  
H.C. Miller Company  
Stock No. 26273  
156556

43813112000

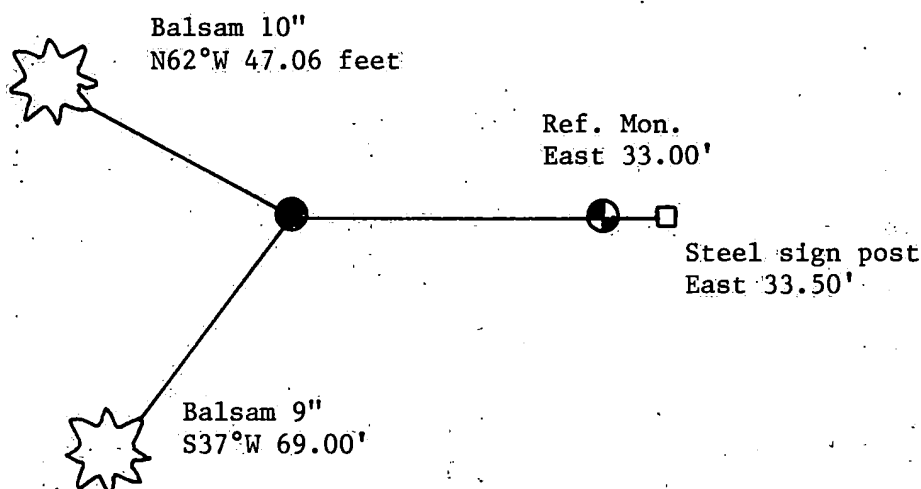
- (e) Describe any material discrepancy between the location of the corner as restored or reestablished and the location of that corner as previously restored or reestablished by distance and direction. Show the discrepancy on the plan view drawing under (d), above. Show the distances between the corner as previously restored or reestablished and (1) the corner as restored or reestablished, and (2) to at least 2 of the witness monuments shown on the drawing in (d), above.

See drawing below.

- (f) Was the corner restored through acceptance of (1) an obliterated evidence location, or, (2) a found perpetuated location?

Re-established through lost corner proportionate methods.

- (g&h) Was the corner reestablished through lost corner proportionate methods? If so, show the method, including the directions and distances to other public land survey corners used as evidence or used for proportioning in determining the corner location?



William B. Cochran

- (i) I, William B. Cochran (type or print name) certify that the corner location shown on this record was determined by me or under my direction and control and that this U.S. Public Land Survey Monument Record is correct and complete to the best of my knowledge and belief.

Signature

Date

William B. Cochran

1/4/95

Affix Land Surveyor Seal

