

FILED ON:
01/28/2025 02:33 PM
CORTNEY BRITTEN CLEEREMAN
REGISTER OF DEEDS
FOREST COUNTY WI
PAGES: 1
INDEX#:

FOREST COUNTY SURVEY MONUMENT RECORD

NOTE: This form is intended and designed to fulfill all requirements of Wisconsin Administrative Code, Chapter A-E 7.08 U.S. Public Land Survey Monument Record (3) (a-i)

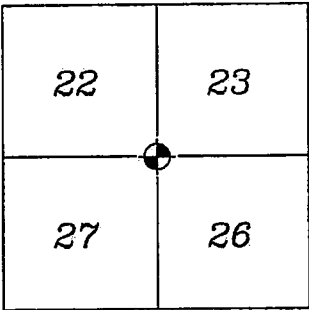
TYPE OF MONUMENT: RR SPIKE

WISCONSIN FOREST COUNTY
NORTHING: 636894.82'
EASTING: 851996.58'
DATUM: NAD83 (2011)
METHOD NETWORK RTK

FIELD WORK DATE: 10/16/2024
COMPANY: PAYNE AND DOLAN

SECTION CORNER COMMON
TO SECTIONS 22, 23, 26
& 27
TOWNSHIP: 38N
RANGE: 13E
TOWN OF ARGONNE

FOUND: ☒
SET: ☐
RESET: ☐
RETIED: ☒



CORNER LOCATION
INDICATED BY:



BASIS FOR MONUMENT LOCATION:
(DESCRIBE METHOD OF SURVEY AND CORNER AUTHENTICATION)

HISTORY:
In 1865, H. Nowlin and J. L. Nowlin set section corner post with the following BTs: Cedar, 10" N.37°E., 23 links; Cedar 10", N.18°W., 31 links.

When Highway 55 was constructed, they stated they had this corner. May 30, 1984 Milo Stefan found location poster on east side of highway. Excavated highway to below marsh along centerline of highway as the best evidence of corner position. Corner position marked by a railroad spike in centerline of Highway 55.

FOUND RR SPIKE AT CORNER LOCATION AND 4 OF THE 6 TIES. REFERENCED TIE SHEET FROM S-1558 DATED 12-24-84. SET 2 TIES TO REPLACE MISSING TIES.

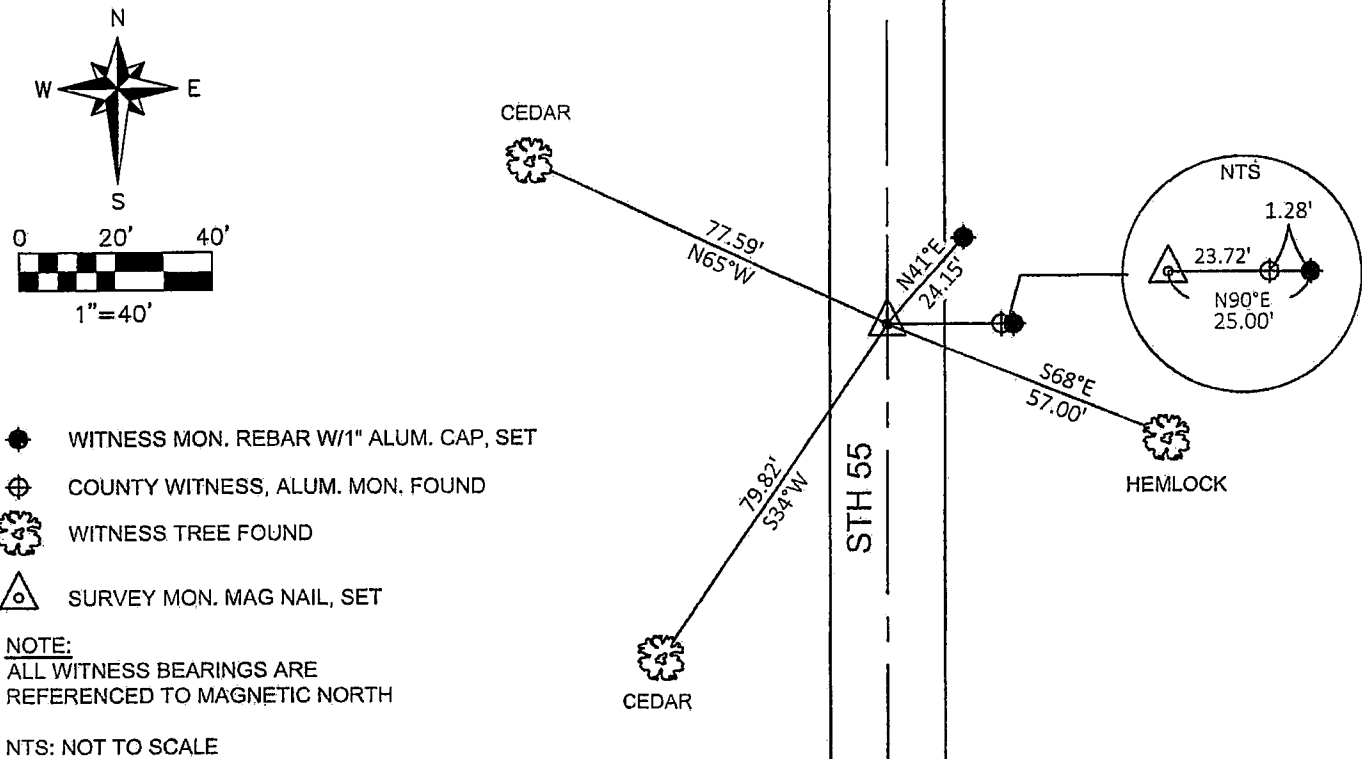
STH 55, REPAVED FALL 2024.
RR SPIKE REMAINS IN PLACE.
SET MAG NAIL AT GRADE ON NEWLY PAVED ROAD DIRECTLY ABOVE THE RR SPIKE, DERIVED FROM RTK COORDINATES.

I accept this monument in good faith as a FOUND PERPETUATED LOCATION of the corner and was not determined through lost-corner-proportionate methods.

I, Rebecca A. DesRochers, Professional Land Surveyor No. 3170, hereby certify that the corner location on this record was determined by me or under my direction and control, and that this U.S. Public Land Survey Monument Record is correct and complete to best of my knowledge, and belief.

Rebecca A. DesRochers 01/21/2025
PROFESSIONAL LAND SURVEYOR DATED

TIE SKETCH



U. S. PUBLIC LAND SURVEY MONUMENT RECORD

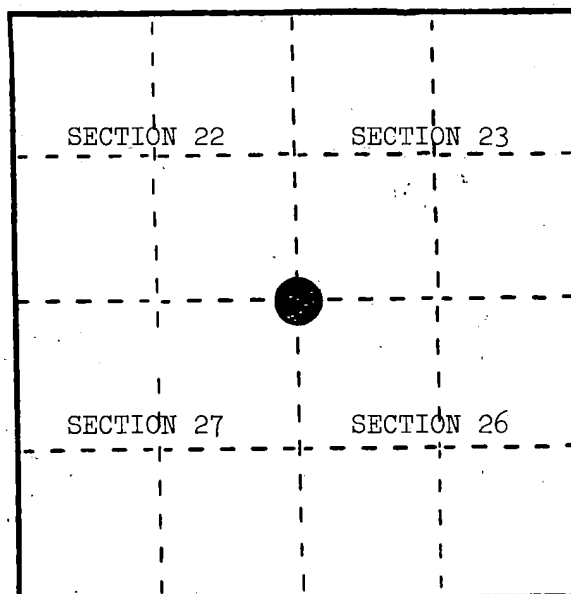
INSTRUCTIONS:

This record shall show the location of the corner and shall include all of the following nine elements (a through i).

- (a) Identify the corner by reference to the U.S. public land survey system.

○ = Corner monument restored.

Section corner to Sections 22, 23, 26, and 27, T.38N., R.13E.



- (b) Describe any record evidence, monument evidence, occupational evidence, testimonial evidence or any other material evidence you considered, and whether the monument was found or placed.

In 1865, H. Nowlin and J. L. Nowlin set section corner post with the following BTs: Cedar, 10", N.37°E., 23 links; Cedar, 10", N.18°W., 31 links.

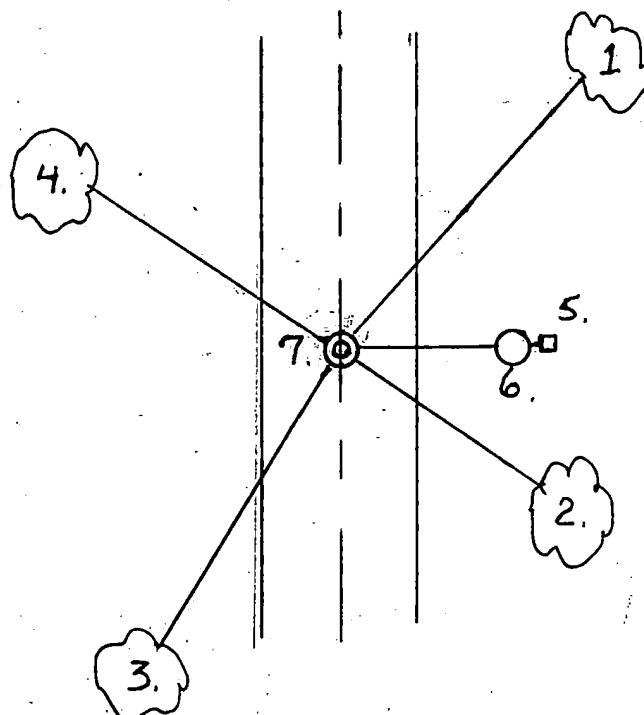
When Highway 55 was constructed, they stated they had this corner.

May 30, 1984, Milo Stefan found location poster on east side of highway. Excavated highway to below marsh along centerline. Found no trace of post. Accepted location poster and centerline of highway as the best evidence of corner position. Corner position marked by a railroad spike in centerline of Highway 55.

- (c) In the plan view drawing below, provide reference ties to at least 4 witness monuments, or, if the location is within a municipality, to at least 2 witness monuments. (Witness monuments shall be made of concrete, natural stone, iron or other equally durable material.) Describe witness monuments.

- (d) Show a plan view drawing depicting the relevant monuments and reference ties which is sufficient in detail to enable accurate relocation of the corner monument if the corner monument is disturbed. Indicate north.

1. Black Ash, 5", N.40°E., 76.29'
2. Hemlock, 12", S.65°E., 57.00'
3. Cedar, 5", S.34°W., 79.82'
4. Cedar, 7", N.65°W., 77.59'
5. Steel Sign Post, East, 24.75'
6. 2" x 60" aluminum reference monument, East, 23.72'
7. Railroad spike marking corner location.



REGISTER'S OFFICE
Forest County, Wis.

Received for record this 23rd day

of January A.D., 1985 at

9:00 o'clock A. M. and

recorded in Vol. CORNER RESTORATION

on page R-17

Paul Aschenbrenner
REGISTER

T38-13

43813220000

R-17

R17

(e) Describe any material discrepancy between the location of the corner as restored or reestablished and the location of that corner as previously restored or reestablished by distance and direction. Show the discrepancy on the plan view drawing under (d), above. Show the distances between the corner as previously restored or reestablished and (1) the corner as restored or reestablished, and (2) to at least 2 of the witness monuments shown on the drawing in (d), above.

(f) Was the corner restored through acceptance of (1) an obliterated evidence location, or, (2) a found perpetuated location?

(1) an obliterated evidence location.

(g&h) Was the corner reestablished through lost corner proportionate methods? If so, show the method, including the directions and distances to other public land survey corners used as evidence or used for proportioning in determining the corner location?

No.

(1) I, Milo E. Stefan
(Type or print name) certify that the corner location shown on this record was determined by me or under my direction and control and that this U.S. Public Land Survey Monument Record is correct and complete to the best of my knowledge and belief.

Signature

Date

