

FILED ON:
01/28/2025 02:33 PM
CORTNEY BRITTEN CLEEREMAN
REGISTER OF DEEDS
FOREST COUNTY WI
PAGES: 1
INDEX#:

FOREST COUNTY SURVEY MONUMENT RECORD

NOTE: This form is intended and designed to fulfill all requirements of Wisconsin Administrative Code, Chapter A-E 7.08 U.S. Public Land Survey Monument Record (3) (a-1)

TYPE OF MONUMENT: 4" BERNETSEN SURVEY NAIL

WISCONSIN FOREST COUNTY
NORTHING: 839533.72'
EASTING: 851940.51'
DATUM: NAD83 (2011)
METHOD NETWORK RTK

FIELD WORK DATE: 10/16/2024
COMPANY: PAYNE AND DOLAN

BASIS FOR MONUMENT LOCATION:
(DESCRIBE METHOD OF SURVEY AND CORNER AUTHENTICATION)

HISTORY:
In 1865, H. Nowlin and J. L. Nowlin set section corner post with the following BTs: Sugar, 8" N.50°W., 27 links; Ironwood 5", S.59°E., 18 links.

In 1990, Milo E. Stefan declared the corner lost and placed RR spike in surface of STH 55 by single proportionate, and witnessed the monument as shown on USPLS Land Survey Monument Record, Index No. P-17.

In 2012, Jeffery L. DeMuth rejected Milo's 1990 corner due to measurement discrepancies from the original survey notes of NE corner and SE corner of Section 22. DeMuth set new corner by single proportion between NE corner and SE corner of Section 22.

FOUND SURVEY NAIL AT CORNER LOCATION AND 4 OF THE 4 TIES.
REFERENCED TIE SHEET FROM S-2656 DATED 10-16-12.

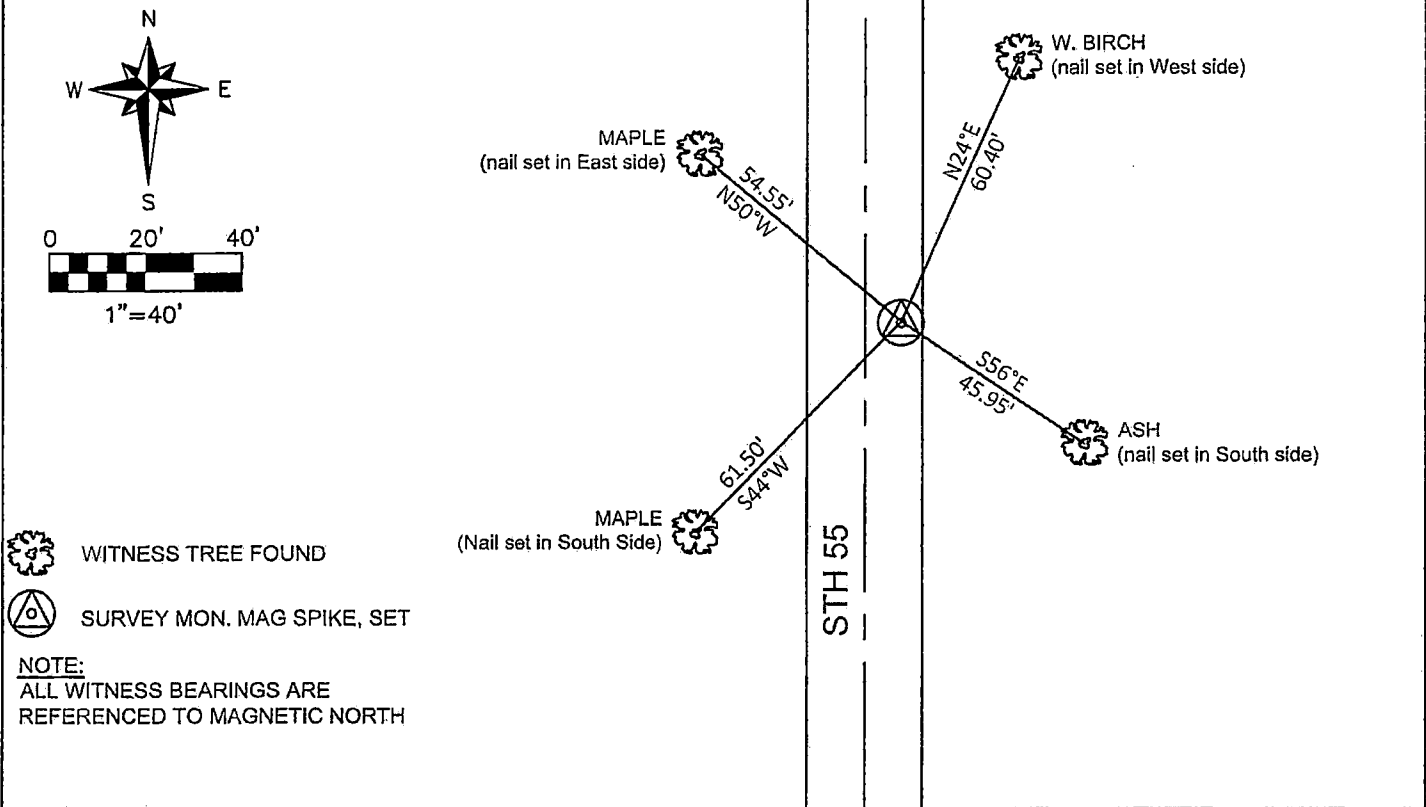
STH 55, REPAVED FALL 2024.
RR SPIKE REMAINS IN PLACE.
SET MAG SPIKE AT GRADE ON NEWLY PAVED ROAD DIRECTLY ABOVE THE SURVEY NAIL, DERIVED FROM RTK COORDINATES.

I accept this monument in good faith as a FOUND PERPETUATED LOCATION of the corner and was not determined through lost-corner-proportionate methods.

I, Rebecca A. DesRochers, Professional Land Surveyor No. 3170, hereby certify that the corner location on this record was determined by me or under my direction and control, and that this U.S. Public Land Survey Monument Record is correct and complete to best of my knowledge, and belief.

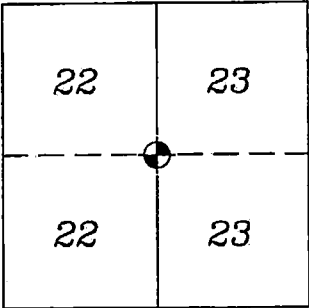
Rebecca A. DesRochers 01/21/2025
PROFESSIONAL LAND SURVEYOR DATED

TIE SKETCH



SECTION CORNER COMMON
TO SECTIONS 22, 23
TOWNSHIP: 38N
RANGE: 13E
TOWN OF ARGONNE

FOUND: ☒
SET: ☐
RESET: ☐
RETIED: ☐



CORNER LOCATION
INDICATED BY:



Document Number

210310

REGISTER'S OFFICE
Forest County, Wis.
Received for record this 25th day
of October A.D., 2012 at
11:00 o'clock A.M. and recorded
in Vol. Corner Restoration
page P-17
Christina M. Hardy
Register of Deeds

U.S. PUBLIC LAND SURVEY MONUMENT RECORD

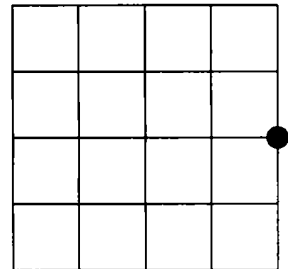
NOTE: This form is intended and designed to fulfill all requirements of Wisconsin Administrative Code, Chapter A-E 7.08 U.S. Public Land Survey Monument Record (3)(a)(b)(c)(d)(e)(f)(g)(h)(i). An additional sheet may be added if necessary to conform with said requirements.

(a) Corner location: Township 38 North

Range 13 East

Town of Argonne

Forest County, Wisconsin



Section 22

(b)(f)(g)(h) Description of monument found at this corner and if it was accepted, state all evidence (material, testimonial, occupational, plats, records, other monuments) used as a basis for accepting. If not accepted or if nothing was found, state evidence used as basis for establishing location. If reestablished through lost corner proportionate methods, indicate all monuments, distances and directions used to establish. Indicate type of monument found or set and sign post.

AUGUST 1865 - JAMES NOWLIN SET POST COMMON TO SECTIONS 22 AND 23.

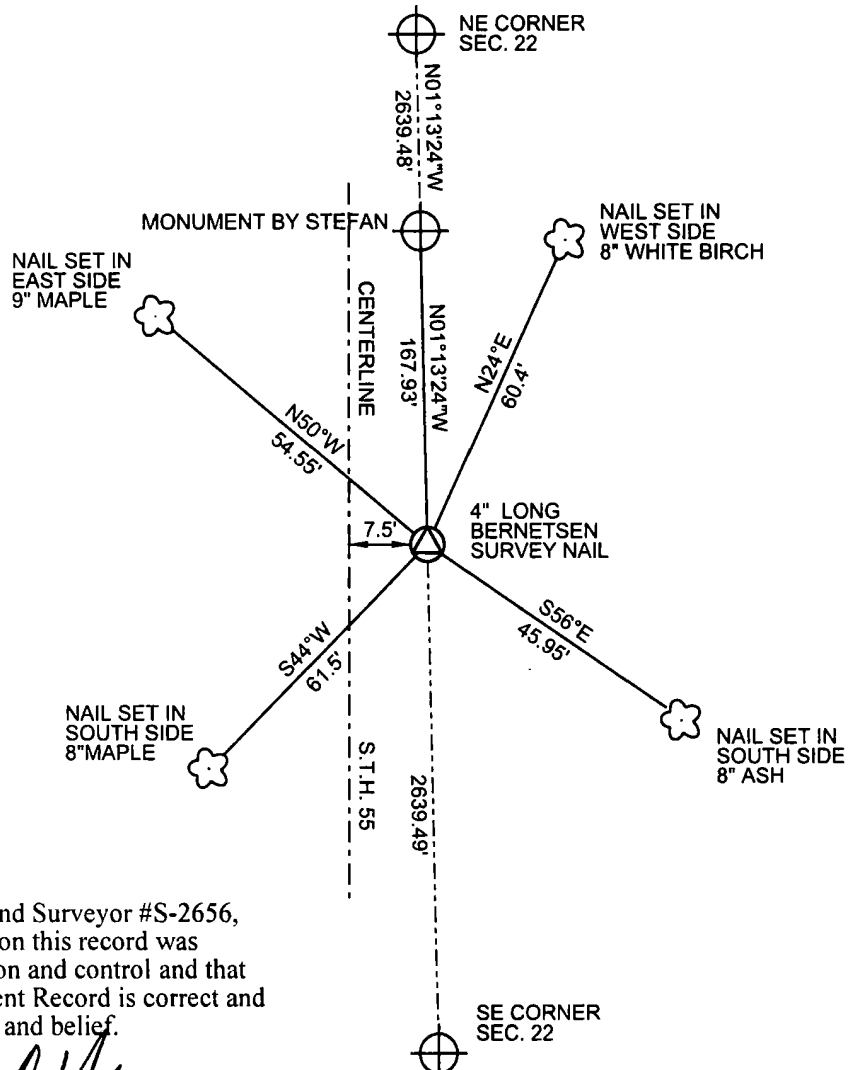
JULY 1990- MILO E. STEFAN:
DECLARED THE CORNER AS LOST AND PLACED A RAILROAD SPIKE IN THE SURFACE OF S.T.H. 55 BY SINGLE PROPORTIONATE MEASUREMENT, AND WITNESSED THE MONUMENT AS SHOWN ON USPLS LAND SURVEY MONUMENT RECORD, INDEX NO. P-17.

JUNE, 2012 - I FOUND AND REJECTED MILO'S 1990 CORNER, BECAUSE IT'S POSITION DISAGREES WITH THE TOPOGRAPHIC CALLS FROM THE ORIGINAL SURVEY NOTES FOR THE NORTHEAST CORNER AND SOUTHEAST CORNER OF SECTION 22.

I DECLARE THIS CORNER AS LOST, AND ESTABLISH IT'S POSITION BY SINGLE PROPORTION BETWEEN THE NORTHEAST CORNER AND SOUTHEAST CORNER OF SECTION 22.

I SET A 4" LONG, BERNTSEN SURVEY NAIL IN THE SURFACE OF S.T.H. 55 AND WITNESSES AS SHOWN BELOW.

(c)(d)(e) Plan view of corner with ties to at least 4 witness monuments. If in disagreement with previously established corner, show the distances between the two corners and also indicate the ties to the disputed corner.



(i) I, Jeffrey L DeMuth, Registered Land Surveyor #S-2656, hereby certify that the corner location on this record was determined by me or under my direction and control and that this U.S. Public Land Survey Monument Record is correct and complete to the best of my knowledge and belief.

Signature

Date

10/16/2012

Index No.

P-17

Stock No. 26273
DOCUMENT NUMBER
143397

U.S. PUBLIC LAND SURVEY MONUMENT RECORD

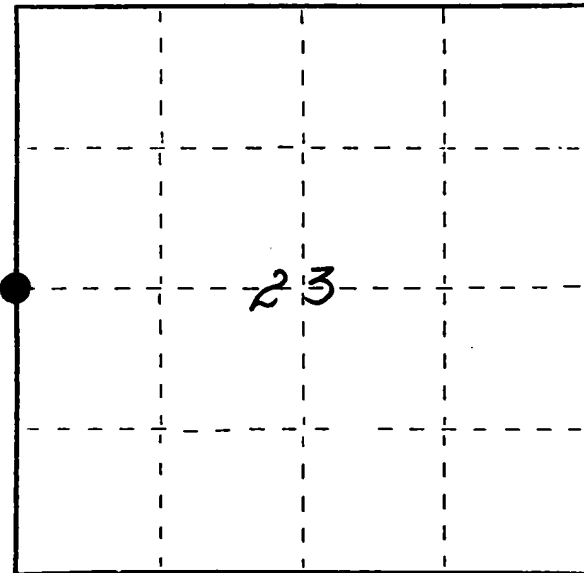
Index No. P-17

State of Wisconsin }
County of Forest } ss.

I Milo E. Stefan, do hereby
certify that on the 6th day
of June, 1990, I found
~~evidence of the~~ restored the W. 1/4
corner of Section 23
Township 38, North, Range
13 East, Fourth Principal Meridian,
as described hereon; and that from this evidence
I established a new monument and accessories
as described hereon to perpetuate the original
location of this corner.

Resident witnesses:

Myron Smith



● = Corner monument restored.

History of original corner establishment:

1865, H. & J. L. Nowlin established this corner, set a wood post and two BTs:
8" Sugar, N50°W, 27 Links 5" Ironwood, S59°E, 18 Links

Description of corner evidence found:

Corner was destroyed during construction of Highway #55 many years ago. I declare this corner as "lost" and restore it by Lost Methods, "Single Proportionate Measurement".

Description of monument and accessories I established to perpetuate the original location of this corner.

I placed a railroad spike in blacktop surface of the highway with Reference Corner, West, 49.78 feet. Reference Corner is a 2½" x 36" Aluminum Monument in mound of stone. BTs to Section Corner:

6" Sugar Maple, N58°E, 79.40'	10" Sugar Maple, S73°E, 56.26'
6" Sugar Maple, S75°W, 89.28'	6" Sugar Maple, N39°W, 68.74'
6' Steel Sign Post is West of Reference Corner 1.6'	

Dated at Rhineland, Wis., this 9th day of July, 1990

Signature Milo E. Stefan Title Land Surveyor Registration No. 1558
(County Surveyor, Registered Land Surveyor, or other duly authorized official)

Office of Register of Deeds, County of Forest I hereby certify that the within
instrument was filed in this office for record on the 10th day of December, 1991
at 10:15 o'clock A. M.

(Register of Deeds)
By Sean Chitko Deputy

43813222000

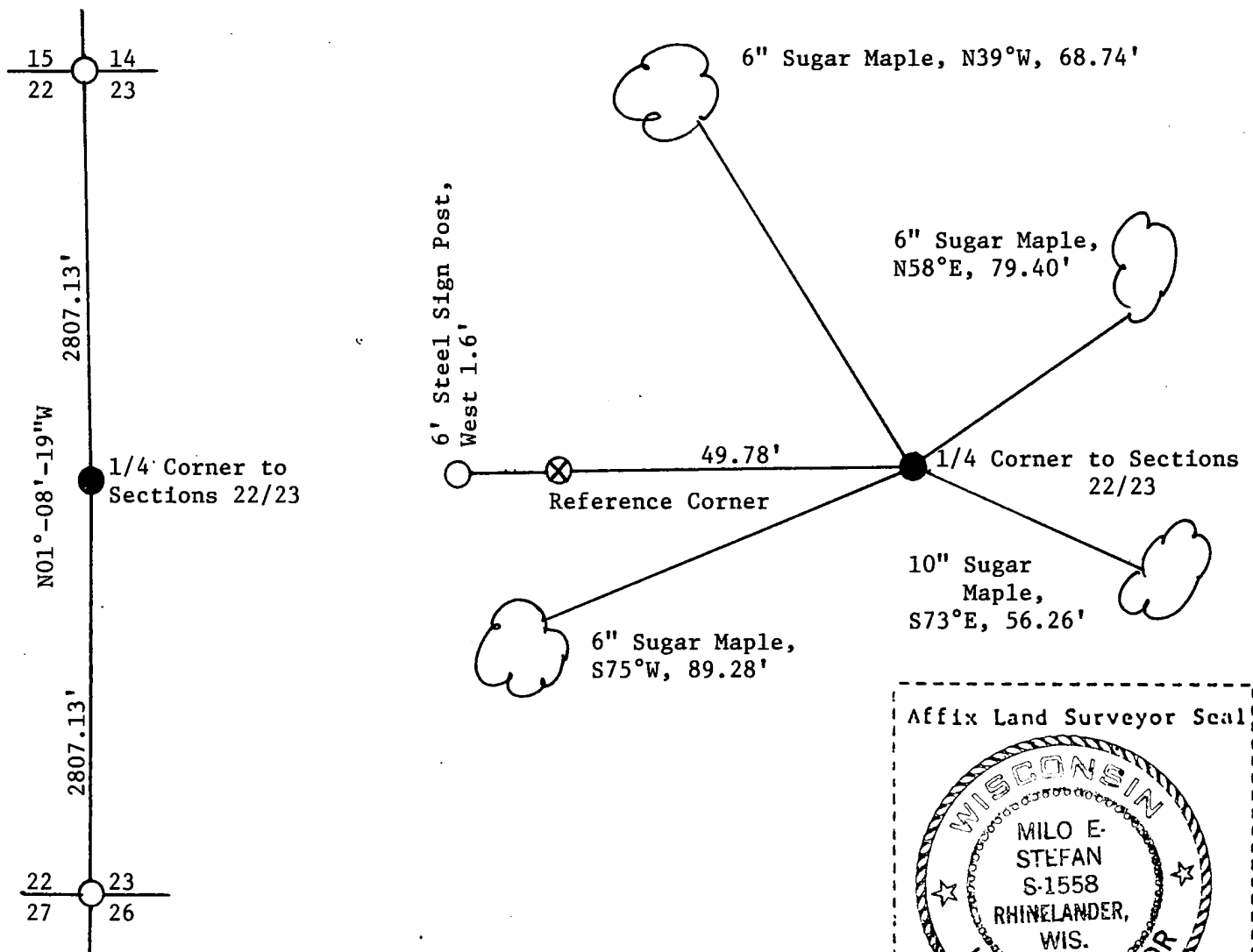
(e) Describe any material discrepancy between the location of the corner as restored or reestablished and the location of that corner as previously restored or reestablished by distance and direction. Show the discrepancy on the plan view drawing under (d), above. Show the distances between the corner as previously restored or reestablished and (1) the corner as restored or reestablished; and (2) to at least 2 of the witness monuments shown on the drawing in (d), above.

None

(f) Was the corner restored through acceptance of (1) an obliterated evidence location, or, (2) a found perpetuated location?

N/A

(g&h) Was the corner reestablished through lost corner proportionate methods? If so, show the method, including the directions and distances to other public land survey corners used as evidence or used for proportioning in determining the corner location?



Affix Land Surveyor Seal



(i) 1. Milo E. Stefan

(Type or print name) certify that the corner location shown on this record was determined by me or under my direction and control and that this U.S. Public Land Survey Monument Record is correct and complete to the best of my knowledge and belief.

Milo E. Stefan
Signature

7/9/90

Date

Survey requested by: Dennis Staege

District Ranger.

6/4/91
Date