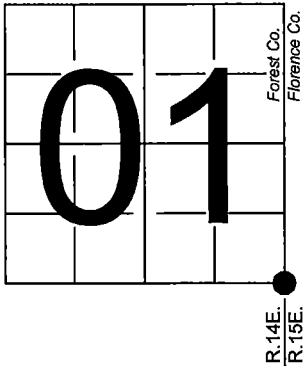


U. S. PUBLIC LAND SURVEY MONUMENT RECORD

NOTE: This form is intended and designed to fulfill all requirements of Wisconsin Administrative Code, Chapter A-E 7.08 U.S. Public Land Survey Monument Record (3) (a-i)

A-E 7.08(3)(a) Identity of corner:
Southeast Corner Section 01,
Township 38 North, Range 14 East
of the Fourth Principal Meridian,
Town of Popple River, Forest County,
Wisconsin

WISCRS - FOREST COUNTY
N: 652,363.977 USft (XXX,XXX.XXX)
E: 894,187.735 USft (XXX,XXX.XXX)
Datum: NAD83 (2011)
GNSS Method RTK
GNSS Control WISCORS VRS



The coordinate value shown has been verified by the average of two or more GPS observations at a markedly different time. Coordinates shown in parenthesis are previously published values.

A-E 7.08(3)(b)

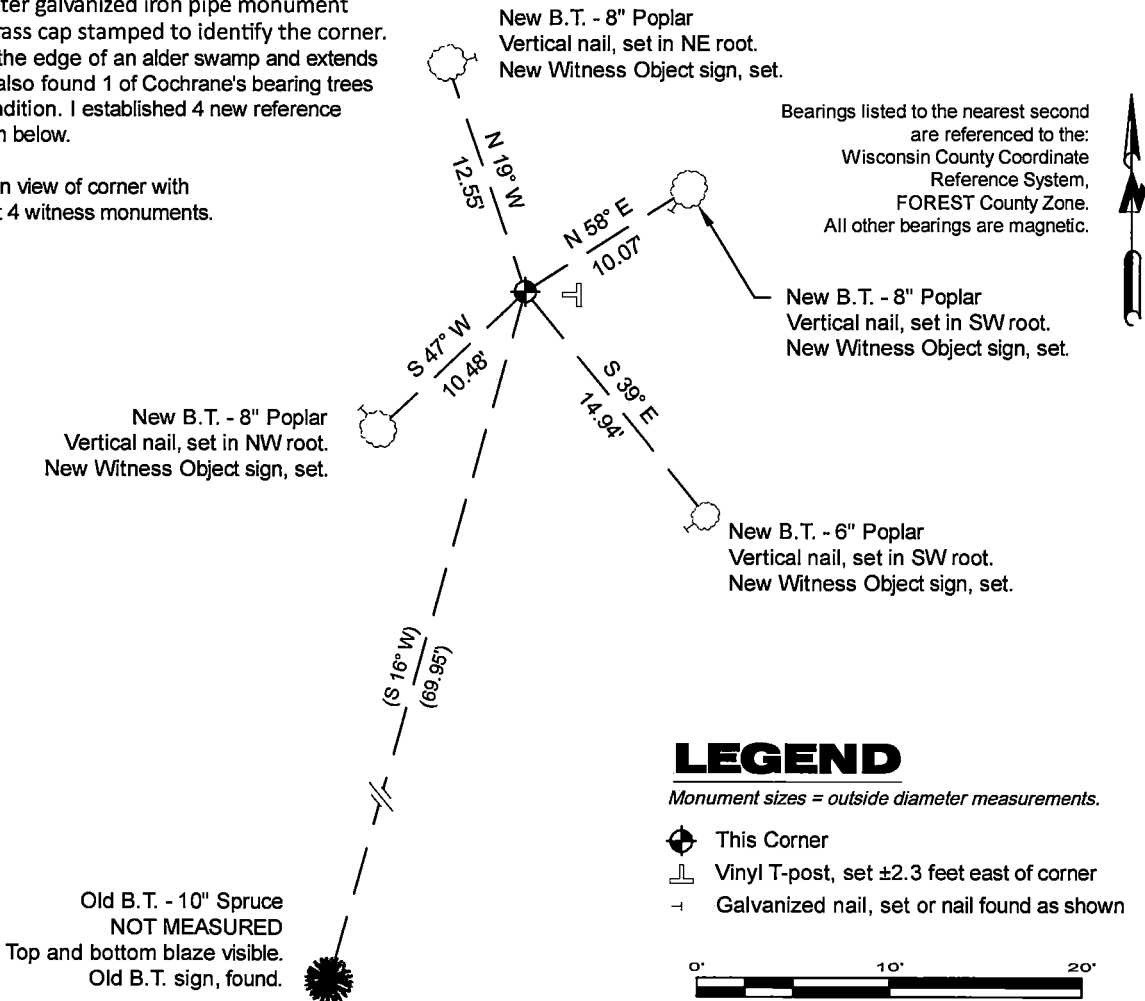
Original Surveyor: Artemas Curtis - October 1857
Cedar 16 - S 41° W, 40 Links, Cedar 14 - N 8° W, 19 Links
Cedar 10 - N 22° E, 30 Links, Cedar 16 - S 71° E, 3 Links

See previous U.S. Public Land Survey Monument Record - E-25 - March 8, 1985 - Surveyor 1107 - William B. Cochrane - THENCE:

- 1985 - Surveyor 1107 - William B. Cochrane - indicates this position as "2 1/2" galvanized iron pipe with a brass cap stamped to identify corner" on Forest Co. record Map #381401-19870224 and #381412-19870224.
- January 04, 2008 - Surveyor 2197 - Michael A Trembl - indicates this position as "existing 2 1/2" iron pipe w/brass cap" on Florence Co. record Map #M0002.
- December 07, 2019 - Surveyor 3127 - James E. Anderson - indicates this position as "2 1/2" dia. brass cap monument" on Forest Co. record Map #381412-20191207.
- June 05, 2020 - Surveyor 809-8 - Michael S. Hess - indicates this position as "brass cap mon," on Forest Co. record Map #381412-20200605.

November 13, 2024 - In performing the 2024 - Forest County - "PLSS Corner Remonumentation and GPS Services" project, I found a 2.25" diameter galvanized iron pipe monument with a 3" diameter brass cap stamped to identify the corner. The monument is at the edge of an alder swamp and extends ±36" above grade. I also found 1 of Cochrane's bearing trees alive and in good condition. I established 4 new reference monuments as shown below.

A-E 7.08(3)(c)(d) Plan view of corner with references to at least 4 witness monuments.



A-E 7.08(3)(e) 1857 Surveyor set a post, 1985 Surveyor found a 2" diameter galvanized iron pipe, with brass cap stamped to identify corner, 2008, 2019, & 2020 Surveyors found the same. I found a 2.25" diameter galvanized iron pipe monument with a 3" diameter brass cap stamped to identify the corner in 2024.

A-E 7.08(3)(f) I accept this monument in good faith as a FOUND PERPETUATED LOCATION of the corner.

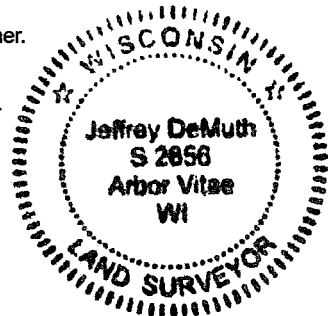
A-E 7.08(3)(g)(h) This corner was not determined through lost-corner-proportionate methods.

A-E 7.08(3)(i) I, Jeffrey L. DeMuth, Professional Land Surveyor No. S-2656, hereby certify that the corner location on this record was determined by me or under my direction and control, and that this U.S. Public Land Survey Monument Record is correct and complete to the best of my knowledge, and belief.

SIGNATURE

November 26, 2024

DATE



43814010000

43814010000

E25

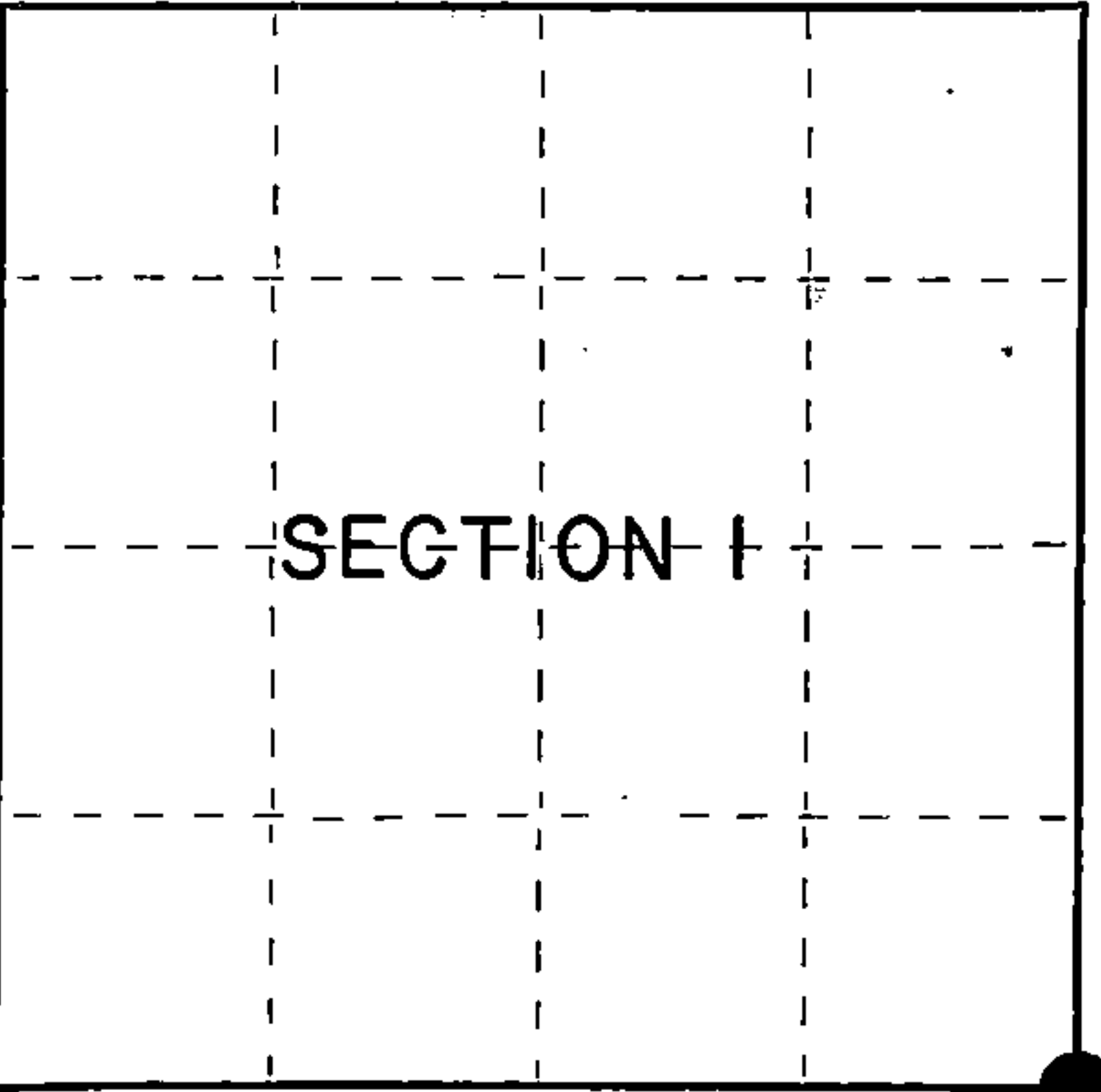
State of Wisconsin }
County of Forest } ss.

I William B. Cochrane, do hereby
certify that on the 12th day
of February, 1985, I found
evidence of the Southeast Section
corner of Section 1
Township 38, North, Range
14 East, Fourth Principal Meridian,
as described hereon; and that from this evidence
I established a new monument and accessories
as described hereon to perpetuate the original
location of this corner.

Resident witnesses:

David Brownell

Tony Tillman



○ = Corner monument restored.

History of original corner establishment:

Original Government Survey in 1857 by Artemas Curtis. In 1964 Jean Resvick, a Land Surveyor with the U.S. Forest Service, found a 2" squared top cedar post in concurrence with original B.T. evidence. In place of post, set a 2" diameter galvanized iron pipe 5 feet long, with a brass cap stamped: T38N, R14E, R15E, S1, S6, S7, S12, 1964, S802. From which the following bear:

Aspen	5"	N12°E	58.28 feet
Aspen	4"	S35°E	33.15 feet
Aspen	5"	N43°W	41.59 feet

Description of corner evidence found:

Found monument as described and in place from which the following bear:

Aspen	8"	N12°E	58.28 feet
Aspen	10"	N43°W	41.59 feet
Aspen	4"	S35°E	33.15 feet- cut down for Photo Project
4"x4" Cedar post		SE	1.60 feet

Description of monument and accessories I established to perpetuate the original location of this corner.

Blazed and scribed a new bearing tree:

Spruce	10"	S16°W	69.95 feet
--------	-----	-------	------------

Dated at Hiles, Wis., this 8th day of March, 1985.

Signature William B. Cochrane Title Land Surveyor Registration No S-1107
(County Surveyor, Registered Land Surveyor, or other duly authorized official)

Office of Register of Deeds, County of Forest, I hereby certify that the within
instrument was filed in this office for record on the 24th day of April, 1985
at 1:00 o'clock P. M.

Paul Aschenbrenner
(Register of Deeds)

By _____ Deputy

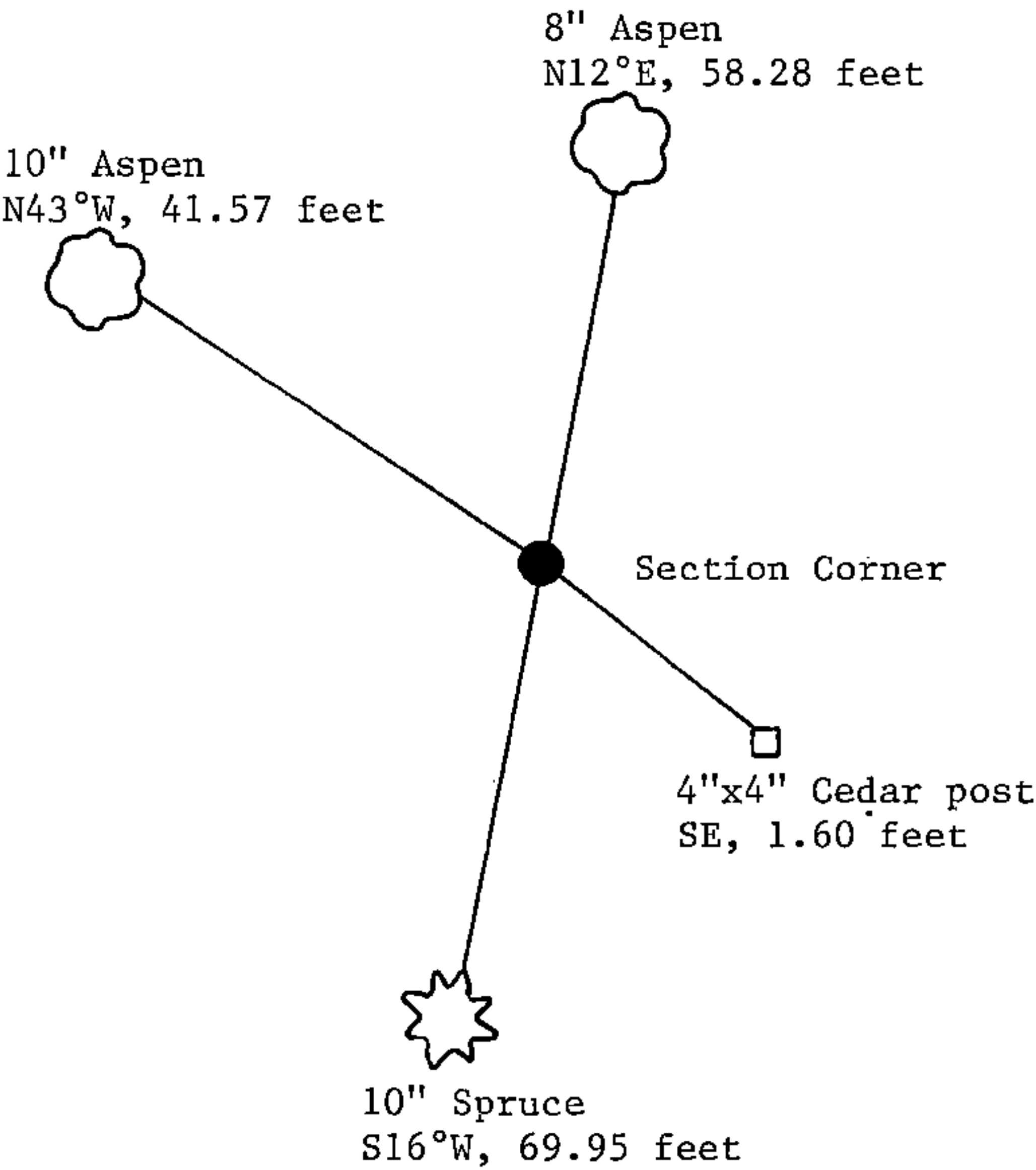
(e) Describe any material discrepancy between the location of the corner as restored or reestablished and the location of that corner as previously restored or reestablished by distance and direction. Show the discrepancy on the plan view drawing under (d), above. Show the distances between the corner as previously restored or reestablished and (1) the corner as restored or reestablished, and (2) to at least 2 of the witness monuments shown on the drawing in (d), above.

See drawing below.

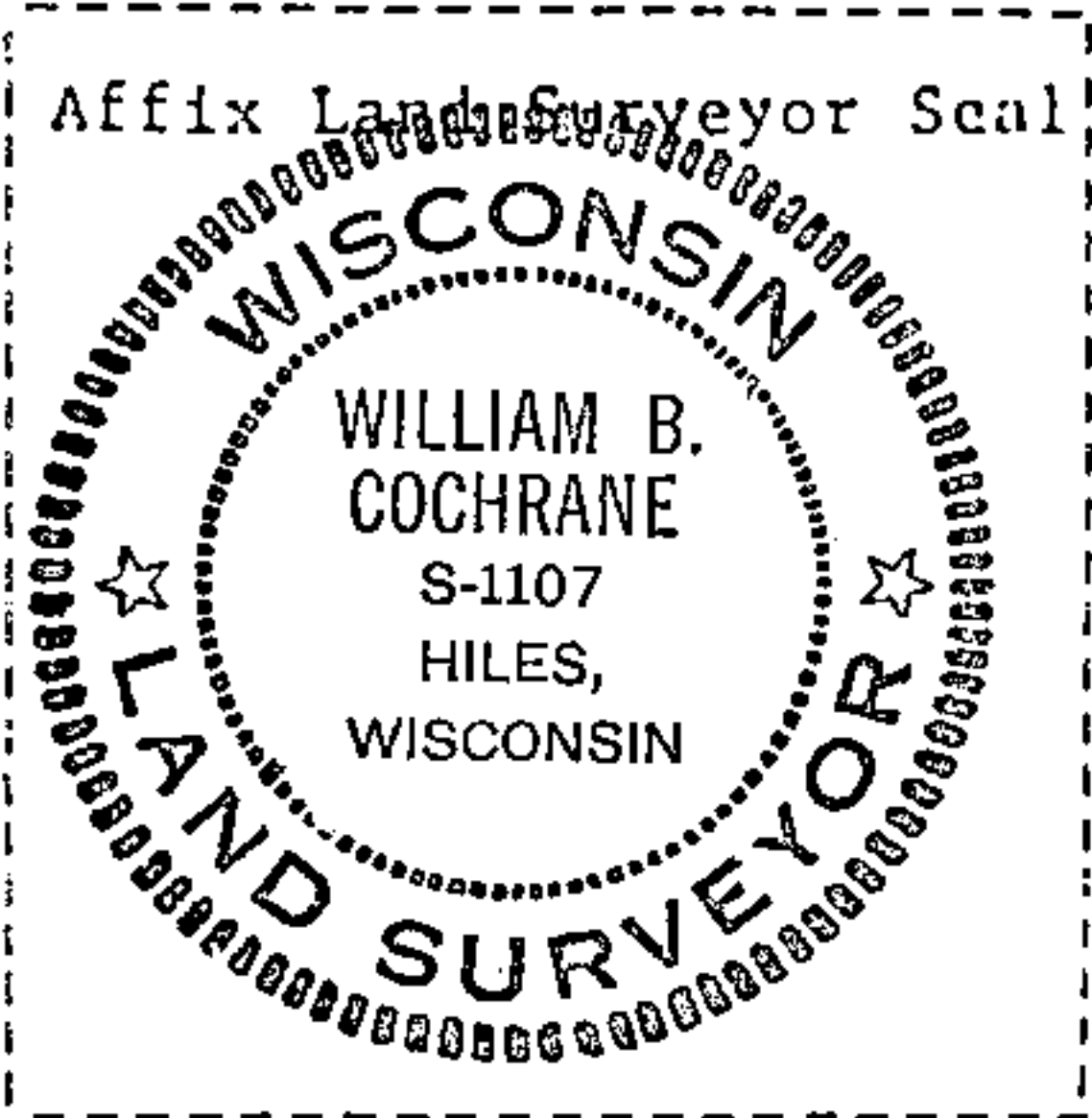
(f) Was the corner restored through acceptance of (1) an obliterated evidence location, or, (2) a found perpetuated location?

Restored through acceptance of a found perpetuated location.

(g&h) Was the corner reestablished through lost corner proportionate methods? If so, show the method, including the directions and distances to other public land survey corners used as evidence or used for proportioning in determining the corner location?



R14E	R15E
S1	S6
S12	S7



(i) I, William B. Cochrane
(type or print name) certify that the corner location shown on this record was determined by me or under my direction and control and that this U.S. Public Land Survey Monument Record is correct and complete to the best of my knowledge and belief.

William B. Cochrane
Signature

March 8, 1985
Date