

!Attention!

This PLSS corner is in the process of being updated by Forest County. An updated Tie Sheet will be available for this corner soon.

Please contact Kayla at the Forest County Land Information Department for more information.

Contact Info:

715-478-1387 or Kayla.L@co.forest.wi.us

Document Number

204748

RS-7150-11 (9/1/66)

CERTIFIED LAND CORNER RESTORATION

State of Wisconsin

County of Forest

ss.

I, Randy R. Erickson, do hereby certify that on the 3rd day of December, 192009, I found evidence of the Northwest corner of Section 12 Township 38 North, Range 14 East, Fourth Principal Meridian, as described hereon; and that from this evidence I established a new monument and accessories as described hereon to perpetuate the original location of this corner:

Description of original monument and accessories and subsequent restorations:

1865 H and J.L. Nowlin set a Witness Post .50 chains south of the corner. Marked Bearing Trees to Witness Corner:

Spruce 5" S 75° E 11 lks Ash 4" S 22° W 8 links

1985 William Cochrane, RLS #1107 restored corner based on original stream calls. Corner falls on north end of bridge over river in center line of old Highway #139. Was able to set a 2½" x 36" aluminum pipe in road at end of bridge. (Actual Corner). Marked witnesses:

NE corner of Bridge S 89° E 13.02 feet Power Pole N 61° W 34.57 ft
NW Corner of Bridge S 89° W 13.01 feet

Description of corner evidence found:

Bridge has been replaced in recent years. New power pole has replaced the one referenced in 1985.

Cochrane had subdivide section 12 in 1985. So based on his measurements, I was able to restore the corner to the 1985 position.

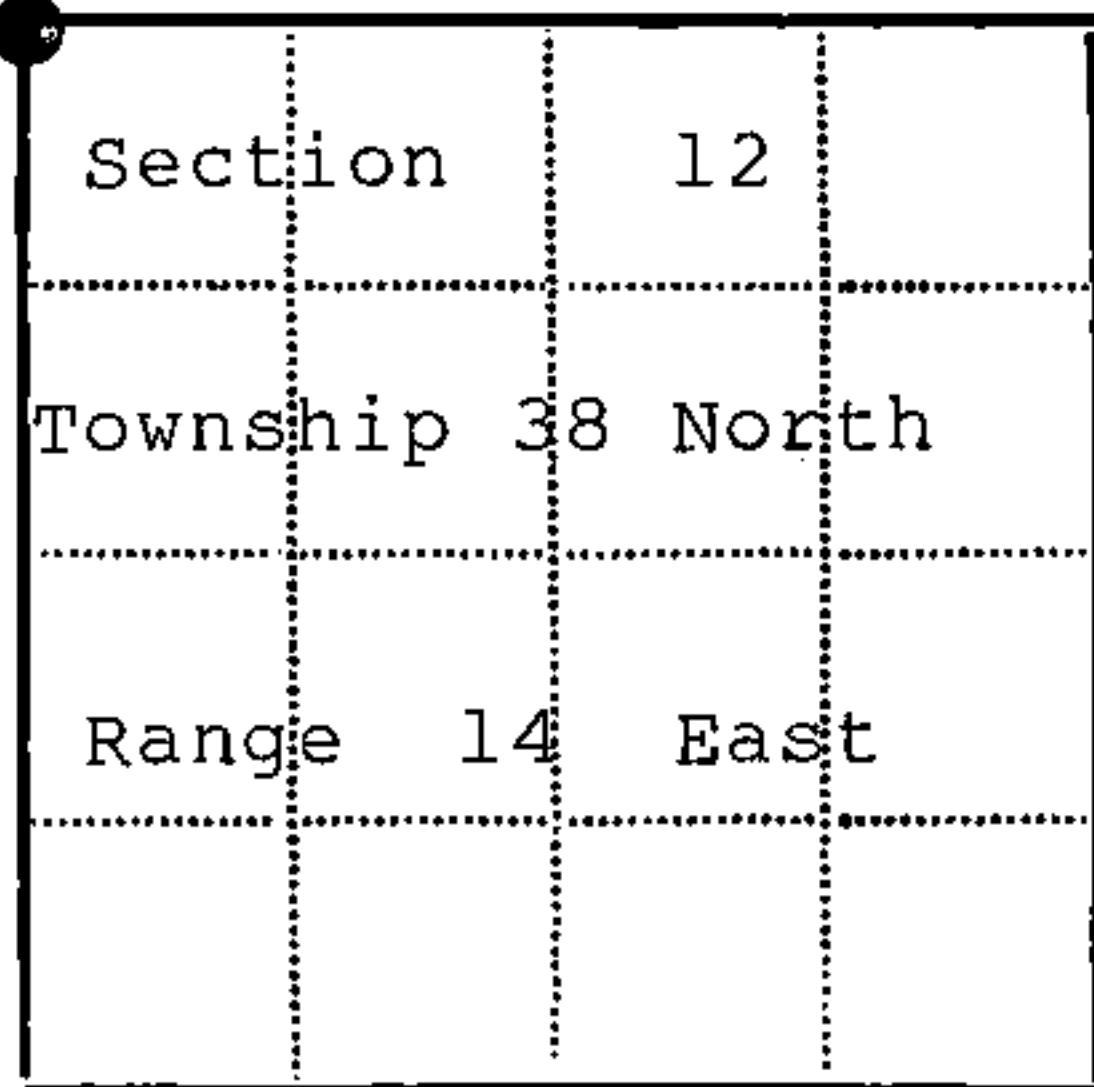
Corner falls near north end of new concrete deck bridge and near center line of roadway.

Description of monument and accessories I established to perpetuate the location of this corner:

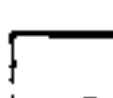
Corner marked by a painted "X". Drawing on back of this sheet shows the new reference created.

Established Wisconsin North Zone State Plane Coordinates for Corner:

N 231898.54 E 2301017.10 NAD 83 1991 U.S. Foot



● - Corner monument restored



Resident witnesses

Dated at Park Falls Wisconsin, this 11 day of Dec. 19 2009

Signature [Signature] Title Reg. Land Surveyor
(County Surveyor, Registered Land Surveyor, or other duly authorized official)

Surveyors Registration No. 1897

Office of Register of Deeds County of Forest

I hereby certify that the within instrument was filed in this office for record on the 26th day of October 2010 19, and was filed in Book No. Corners Page No. E-21 of County Records.

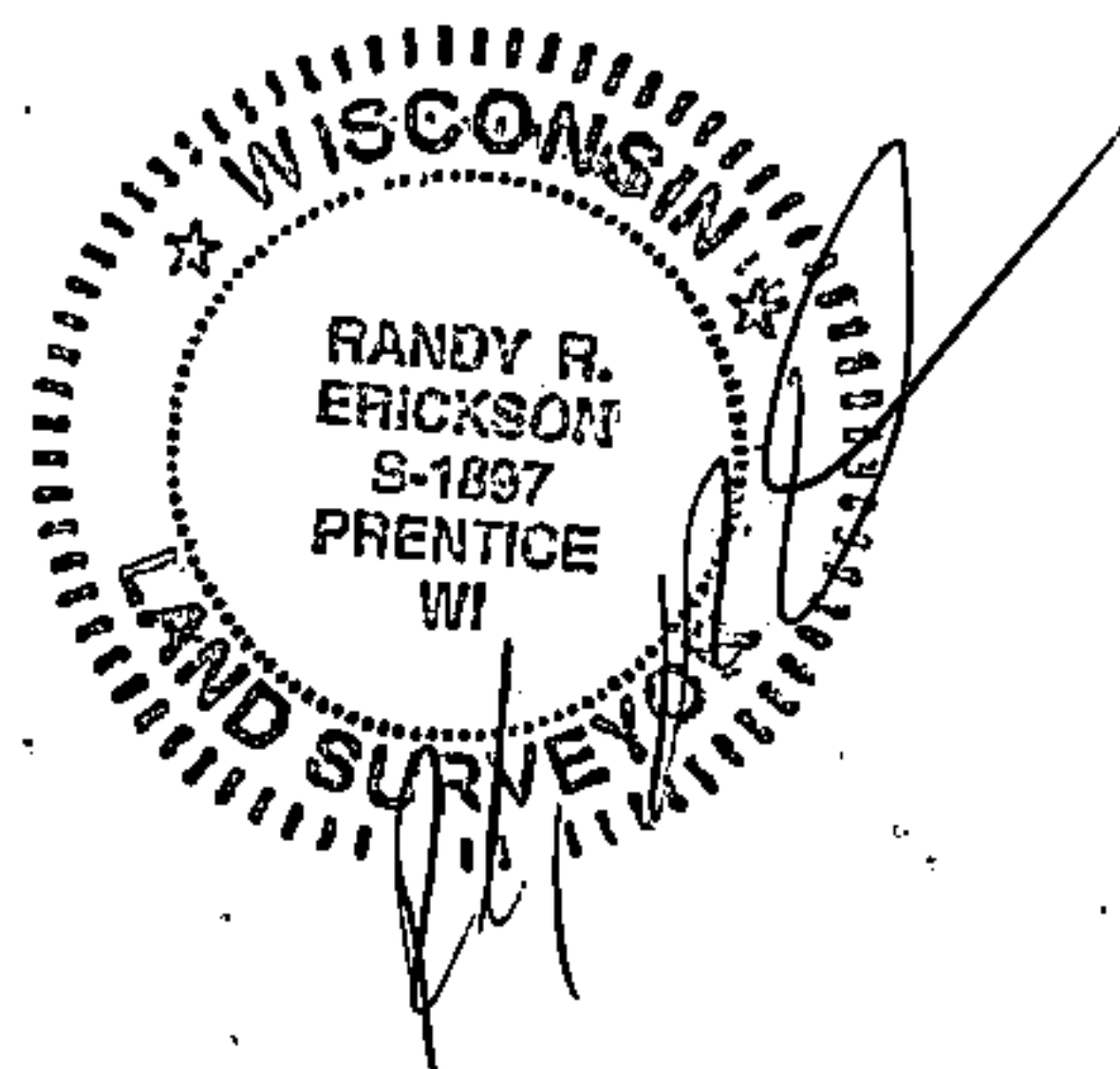
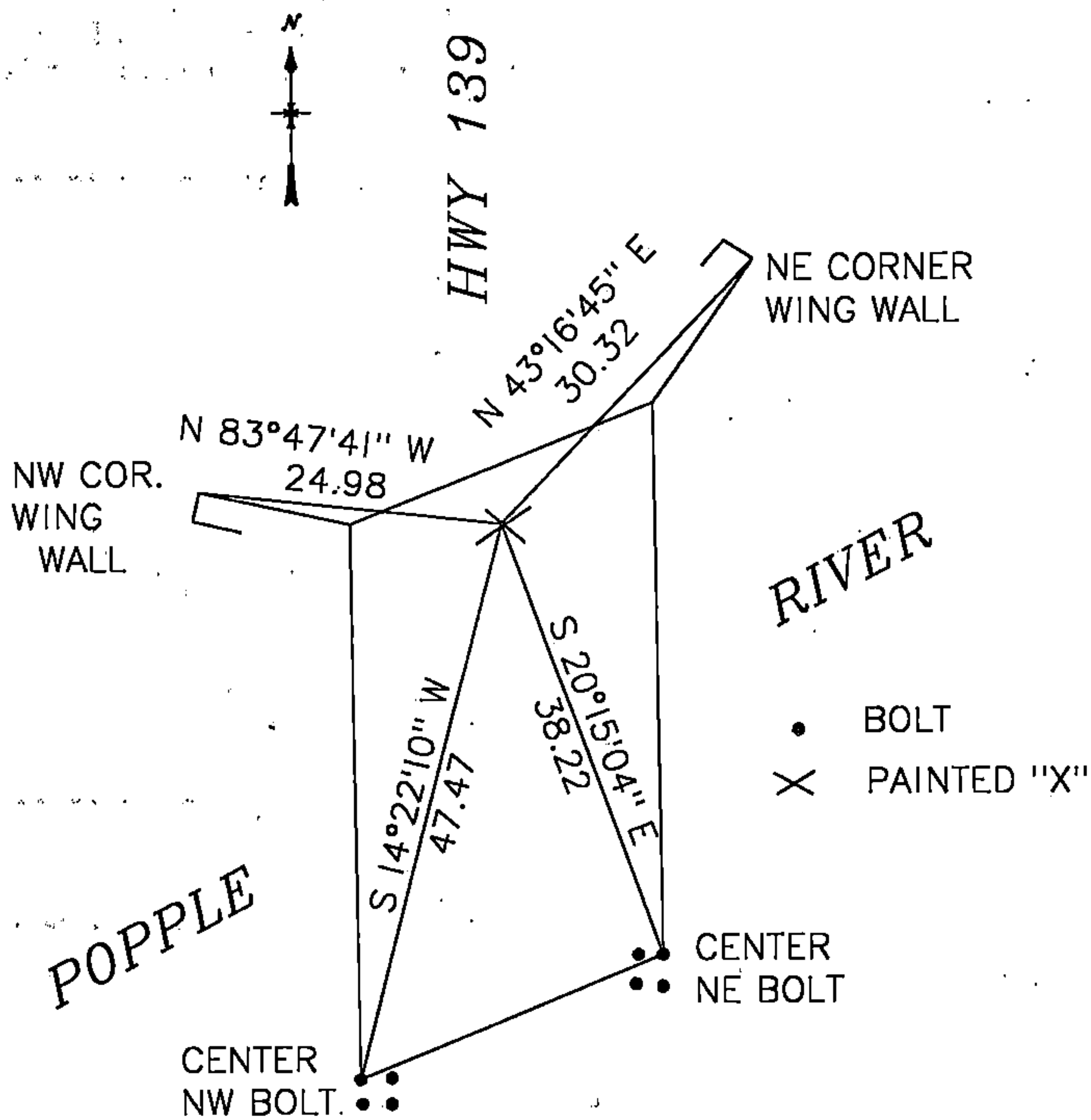
Signature Kay Swanson Title Deputy

Township 38 N, Range 14 E, Section 12, Index No., Page No.

438141020000

E 21

204748



U.S. PUBLIC LAND SURVEY MONUMENT RECORD

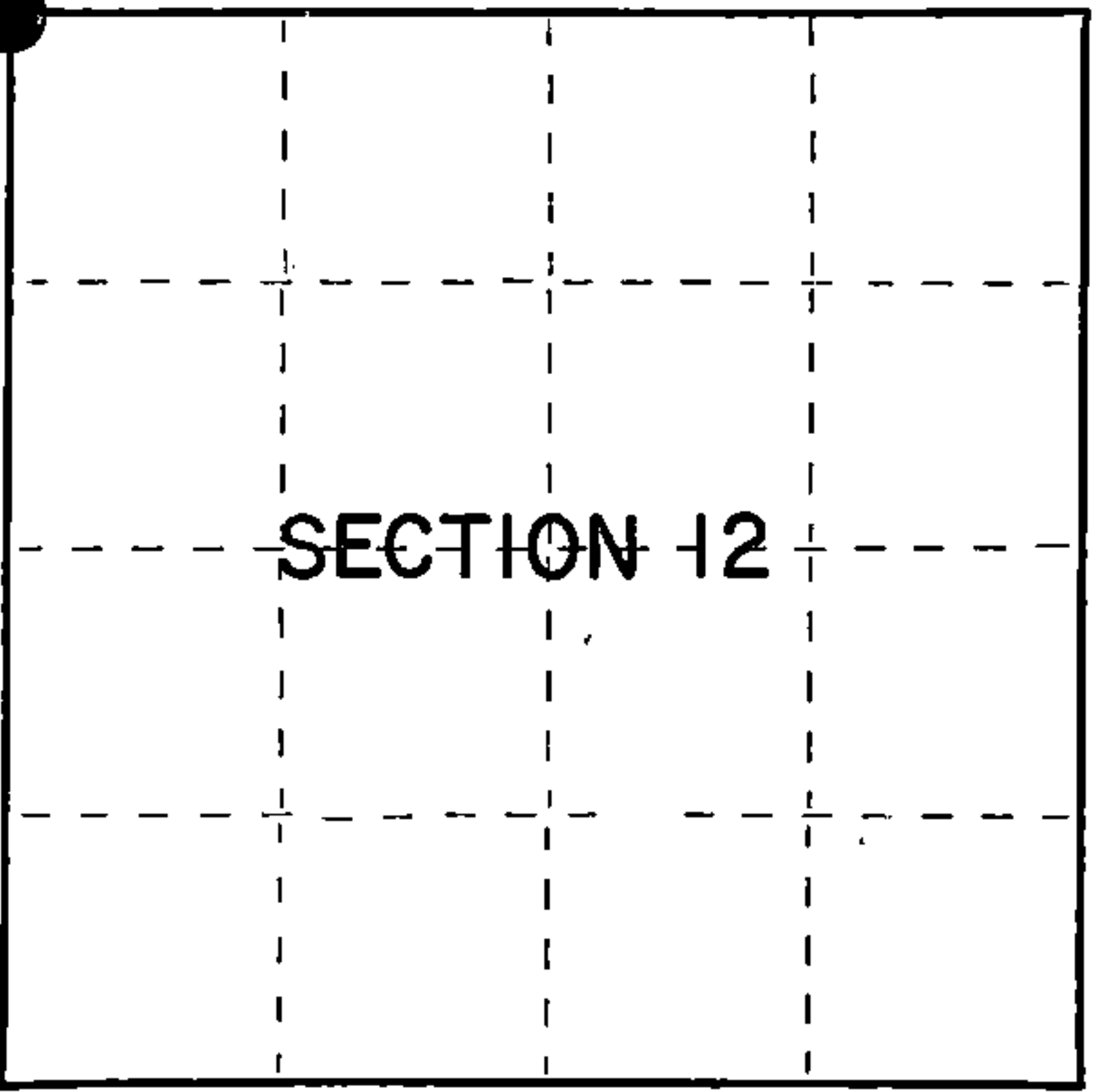
Index No. **E-21**

State of Wisconsin }
County of Forest } ss.

I William B. Cochrane, do hereby
certify that on the 1st day
of August, 1983, I found
evidence of the Northwest Section
corner of Section 12
Township 38, North, Range
14 East, Fourth Principal Meridian,
as described hereon; and that from this evidence
I established a new monument and accessories
as described hereon to perpetuate the original
location of this corner.

Resident witnesses:

David Brownell



○ = Corner monument restored.

History of original corner establishment:

Original Government Survey in 1865 by H. & J.L. Nowlin. North between Sections 11 and 12, 79.50 chains, set witness corner post to Sections 1, 2, 11, and 12, from which the following bear:

Spruce	5"	S75°E	11 lks.
Ash	4"	S22°W	8 lks.

East, 0.15 chains, stream 50 lks. wide, runs NE.
South, 0.50 chains, right bank of stream, 50 lks. wide

Description of corner evidence found:

Old Hwy 139 and a bridge were constructed in 1936. There are no Hwy plans or field notes on file for this project. The river was not radically altered by the road construction. Using the original calls to the river from the South and East, the corner position fell in the Center Line of old Hwy 139 and on the North edge of the bridge.

No original corner evidence was recovered.

Description of monument and accessories I established to perpetuate the original location of this corner.

At the restored corner position, set a 2½" diameter aluminum pipe monument, 3 feet long, 3½ feet in the ground, with an aluminum cap stamped: T38N R14E, S1, S2, S11, S12, 1983, S-1107. From which the bridge corners bear:

NE Corner Bridge	S89°E	13.02 feet
NW Corner Bridge	S89°W	13.01 feet
Power Pole #78-1305	N61°W	34.57 feet

Dated at Hiles, Wis., this 28th day of March, 1985

Signature William B. Cochrane Title Land Surveyor Registration No. S-1107
(County Surveyor, Registered Land Surveyor, or other duly authorized official)

Office of Register of Deeds, County of Forest, I hereby certify that the within
instrument was filed in this office for record on the 24th day of April, 1985
at 1:00 o'clock P. M.

Paul Aschenbrenner
(Register of Deeds)

By _____ Deputy

FORM NO. 985-A

H.C. Miller Company
Surveying Instrument Division

Stock No. 26273

Document Number **127889**

43814620000

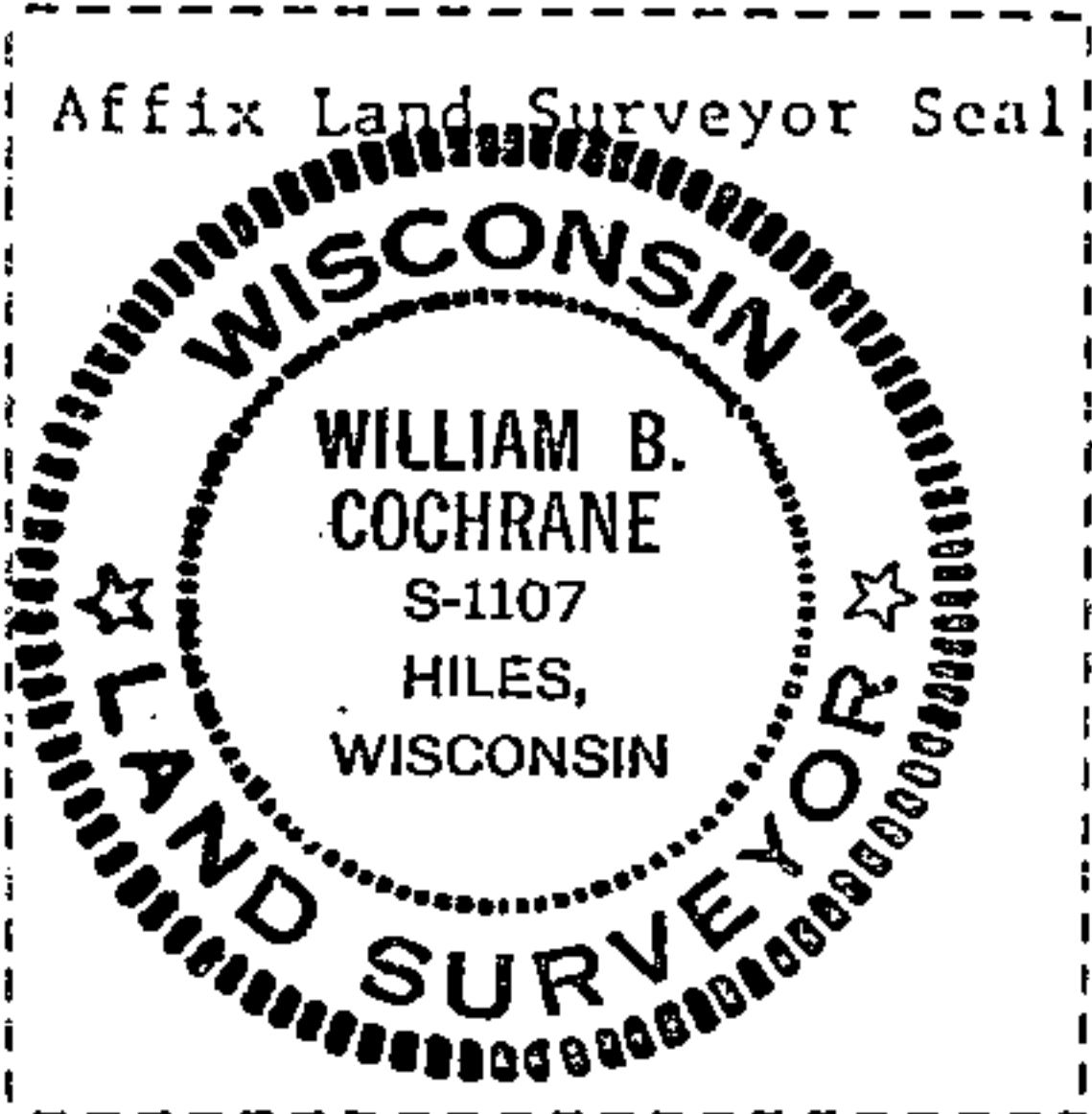
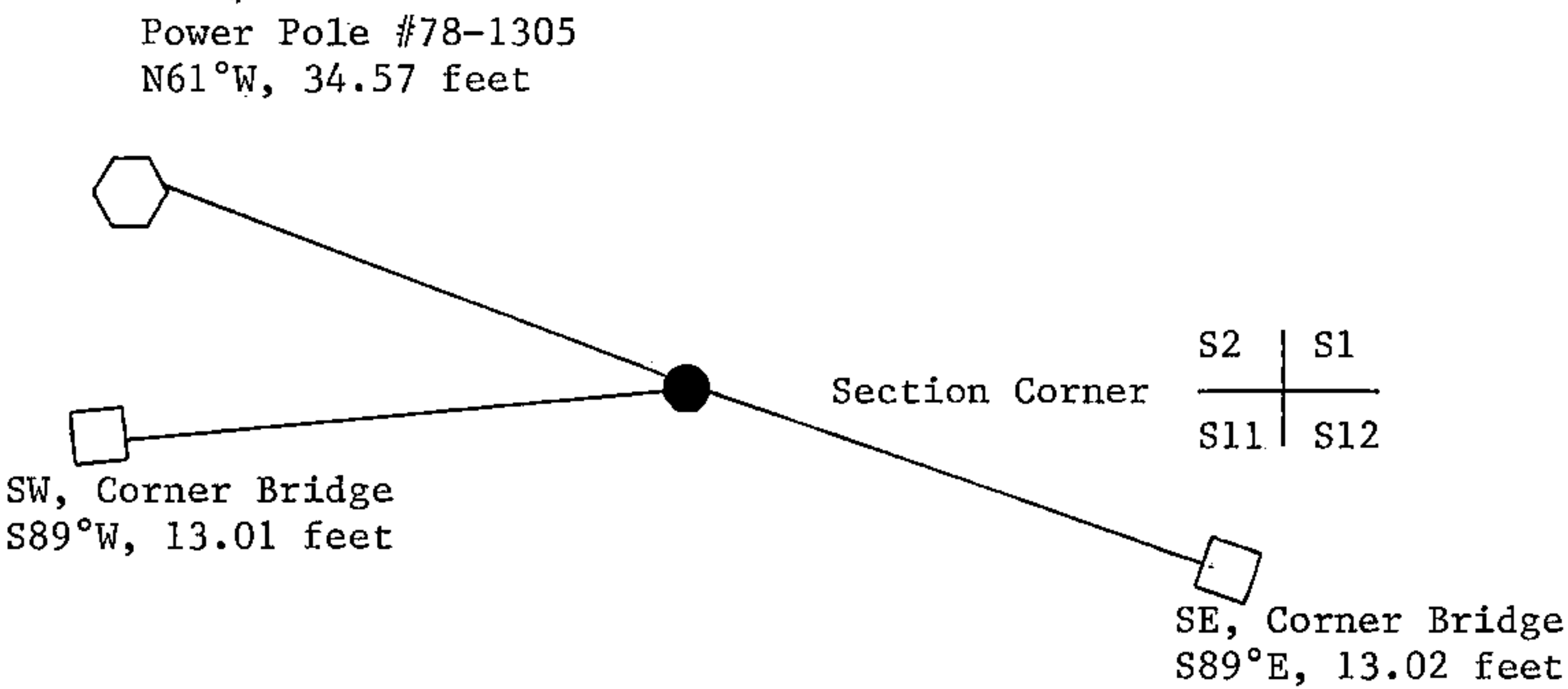
(e) Describe any material discrepancy between the location of the corner as restored or reestablished and the location of that corner as previously restored or reestablished by distance and direction. Show the discrepancy on the plan view drawing under (d), above. Show the distances between the corner as previously restored or reestablished and (1) the corner as restored or reestablished, and (2) to at least 2 of the witness monuments shown on the drawing in (d), above.

See drawing below.

(f) Was the corner restored through acceptance of (1) an obliterated evidence location, or, (2) a found perpetuated location?

Restored from accepted evidence.

(g&h) Was the corner reestablished through lost corner proportionate methods? If so, show the method, including the directions and distances to other public land survey corners used as evidence or used for proportioning in determining the corner location?



(i) I, William B. Cochrane
(type or print name) certify that the corner location shown on this record was determined by me or under my direction and control and that this U.S. Public Land Survey Monument Record is correct and complete to the best of my knowledge and belief.

William B. Cochrane March 23, 1985
Signature Date