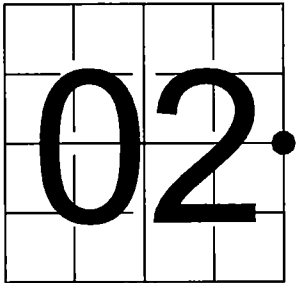


U.S. PUBLIC LAND SURVEY
MONUMENT RECORD - ADDENDUM

NOTE: This form is intended and designed to fulfill all requirements of Wisconsin Administrative Code, Chapter A-E 7.08 U.S. Public Land Survey Monument Record (3) (a-i)

A-E 7.08(3)(a) Identity of corner:
East 1/4 Corner Section 02,
Township 38 North, Range 14 East
of the Fourth Principal Meridian,
Town of Popple River, Forest County,
Wisconsin

WISCRS - FOREST COUNTY
N: 655,163.044 USft (655,162.88)
E: 888,932.019 USft (888,931.98)
Datum: NAD83 (2011)
GNSS Method RTK
GNSS Control WISCRS VRS



The coordinate value shown has been verified by the average of two or more GPS observations at a markedly different time. Coordinates shown in parenthesis are previously published values.

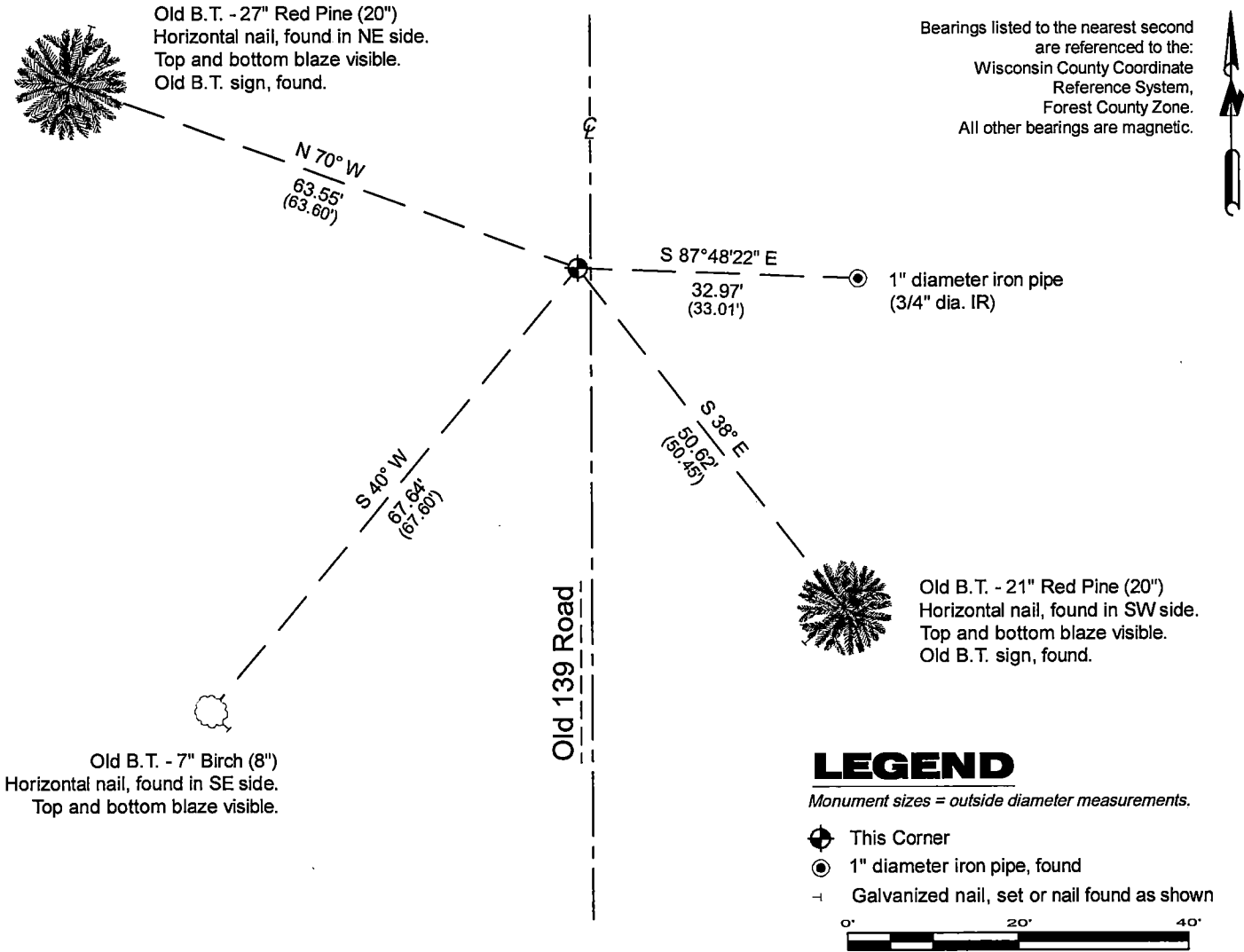
A-E 7.08(3)(b)

Original Surveyor: James L. Nowlin - August 30, 1865 to September 9, 1865
Hemlock 24 - N 27° E, 25 Links, Lind 12 - S 59° W, 24 Links

See previous U.S. Public Land Survey Monument Record - C-21 - May 22, 2020 - Surveyor 3127 - James E. Anderson - THENCE:

April 22, 2025 - I found a 3.25" diameter aluminum capped monument ±1.5' west of the Old 139 center line. The monument is at the asphalt grade and all stamping identifying its location has been removed by road maintenance. I did not find the MAG nail set by Anderson in 2020, but I did find all of his reference monuments. I established 0 new reference monuments as shown below.

A-E 7.08(3)(c)(d) Plan view of corner with references to at least 4 witness monuments.



A-E 7.08(3)(e) 1865 Surveyor set a post, 1985 Surveyor set an aluminum monument, 2020 Surveyor set a MAG nail, I found an aluminum capped monument in 2025.

A-E 7.08(3)(f) I accept this monument in good faith as a FOUND PERPETUATED LOCATION of the corner.

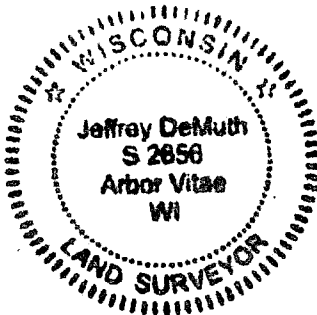
A-E 7.08(3)(g)(h) This corner was not determined through lost-corner-proportionate methods.

A-E 7.08(3)(i) I, Jeffrey L. DeMuth, Professional Land Surveyor No. S-2656, hereby certify that the corner location on this record was determined by me or under my direction and control, and that this U.S. Public Land Survey Monument Record is correct and complete to the best of my knowledge, and belief.

SIGNATURE

April 23, 2025

DATE



43814022000

43814022000

C21

U.S. PUBLIC LAND SURVEY MONUMENT RECORD

Index No. **C-21**

State of Wisconsin }
County of Forest } ss.

I William B. Cochrane, do hereby
certify that on the 1st day
of August, 1983, I found
evidence of the West Quarter
corner of Section 1
Township 38, North, Range
14 East, Fourth Principal Meridian,
as described hereon; and that from this evidence
I established a new monument and accessories
as described hereon to perpetuate the original
location of this corner.

Resident witnesses:

David Brownell

History of original corner establishment:

Original Government Survey in 1865 by H.&J.L. Nowlin. South corrected between Sections
1 and 2, 42.10 chains, set Quarter Corner post to Sections 1 and 2, from which the
following bear:

Hemlock	21"	N27°E	25 lks.
Linden	12"	S59°W	24 lks.

North 3.10 chains, creek 4 lks. wide runs NE

Description of corner evidence found:

Fence line bears East of Old Hwy 139
Creek 3.10 chains North of fence line
Old Hwy 139 bears North and South

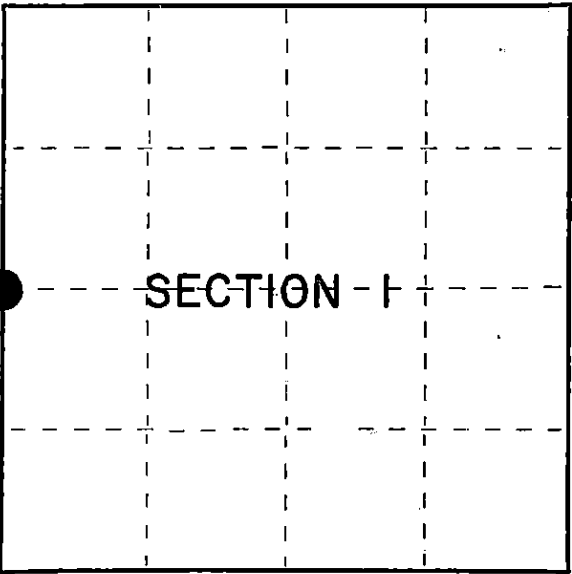
The creek call North, the fence line East, and the center line of old Hwy 139 were
accepted as the best available evidence for restoring the corner position.

No original corner evidence was recovered.

Description of monument and accessories I established to perpetuate the original location of this corner.

At the restored corner position, set a $2\frac{1}{2}$ " diameter aluminum pipe monument, 3 feet long,
 $3\frac{1}{2}$ feet in the ground, with an aluminum cap stamped: T38N R14E, 1/4, S1, S2, 1983,
S-1107. From which the following new blazed and scribed bearing trees bear:

R. Pine	12"	S38°E	50.90 feet
R. Pine	18"	N70°W	63.60 feet



○ = Corner monument restored.

Dated at Hiles, Wis., this 27th day of March, 1985

Signature William B. Cochrane Title Land Surveyor Registration No. S-1107
(County Surveyor, Registered Land Surveyor, or other duly authorized official)

Office of Register of Deeds, County of Forest, I hereby certify that the within
instrument was filed in this office for record on the 24th day of April, 1985
at 1:00 o'clock P. M.

Paul Aschenbrenner
(Register of Deeds)

By _____ Deputy

(e) Describe any material discrepancy between the location of the corner as restored or reestablished and the location of that corner as previously restored or reestablished by distance and direction. Show the discrepancy on the plan view drawing under (d), above. Show the distances between the corner as previously restored or reestablished and (1) the corner as restored or reestablished, and (2) to at least 2 of the witness monuments shown on the drawing in (d), above.

See drawing below.

(f) Was the corner restored through acceptance of (1) an obliterated evidence location, or, (2) a found perpetuated location?

Restored from accepted evidence.

(g&h) Was the corner reestablished through lost corner proportionate methods? If so, show the method, including the directions and distances to other public land survey corners used as evidence or used for proportioning in determining the corner location?

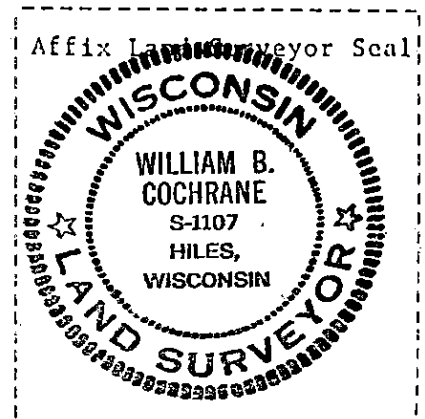
18" R. Pine
N70°W, 63.60 feet



Quarter Corner S2 | S1



12" R. Pine
S38°E, 50.90 feet



(i) I, William B. Cochrane
(type or print name) certify that the corner location shown on this record was determined by me or under my direction and control and that this U.S. Public Land Survey Monument Record is correct and complete to the best of my knowledge and belief.

William B. Cochrane March 27, 1985
Signature Date

NOV 23 2020

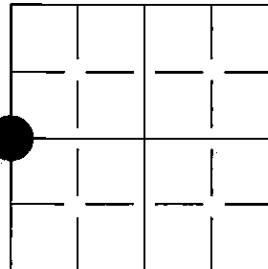
Time: 8:30 AM
Vol.: Corner Restoration
Page Number: C-21

U S PUBLIC LAND SURVEY MONUMENT RECORD

NOTE: This form is intended and designed to fulfill all requirements of Wisconsin Administrative Code, Chapter A-E 7.08 U.S. Public Land Survey Monument Record (3) (a-i)

(a) CORNER LOCATION
W1/4 CORNER OF SECTION 1
TOWNSHIP 38 NORTH
RANGE 14 EAST OF THE 4TH PM
TOWN OF POPPLE RIVER
COUNTY OF FOREST

WISCONSIN - FOREST COUNTY
N: 655162.88 USft
E: 888931.98 USft
Datum: NAD83 (2011)
GNSS Method RTN - Direct
GNSS Control WISCORS VRS



(b) HISTORY OF ORIGINAL CORNER ESTABLISHMENT

Original Surveyor: James L. NOLIN

Original Accessories:

Date of Survey: Commenced: August 30, 1865
Completed: Sept 9th, 1865

24" Hemlock, N27°E, 25 links
12" Linden, S59°W, 24 links

(b)(f)(g)(h) Description of monument found at this corner and if it was accepted, state all evidence (material, testimonial, occupational, plats, records, other monuments) used as a basis for accepting. If not accepted or if nothing was found, state evidence used as basis for establishing location. If re-established through lost corner proportionate methods, indicate all monuments, distances and directions used to establish. Indicate type of monument and sign post found or set.

1985 - William B. Cochrane set a 2 1/2" diameter aluminum pipe monument stamped to identify corner at original distances and made the following bearing trees:

12" R. Pine, S38°E, 50.90'

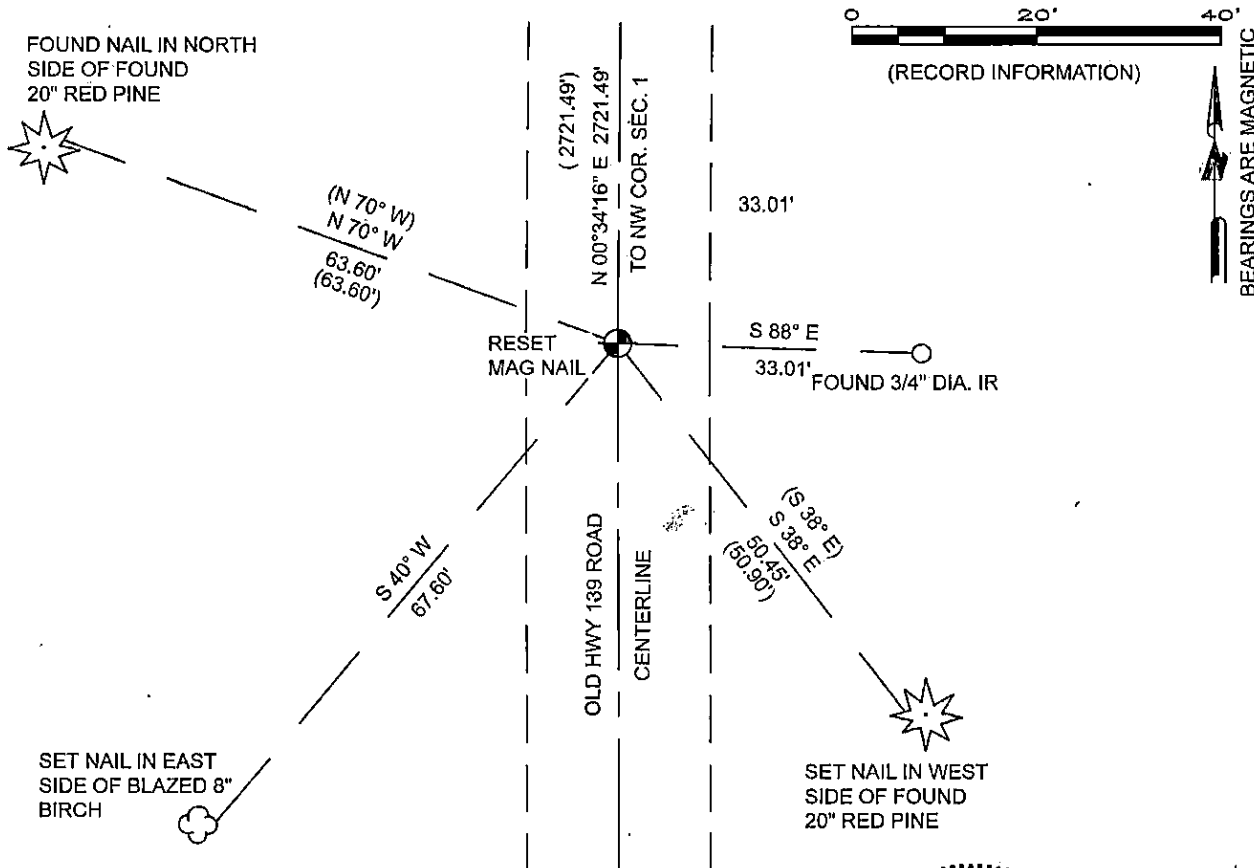
18" R. Pine, N70°W, 63.60'

2005 - Michael A. Trembl found a USFS Aluminum Monument and referenced on a Plat of Survey dated 11/14/2005

2019 - Jeffrey T. Brock computed the position from ties and referenced on a Survey Map dated 10/29/2019

May 2020 - I set a MAG nail from ties over magnetic attraction and made new ties as referenced below

The coordinate value shown has been verified by at least one of the following methods: 1) comparison to a previously GNSS determined published value, 2) the value is the average of two or more GNSS observations at a markedly different time, 3) one or more distances were measured back to the GNSS observed corner from temporary GNSS observed offset locations.



(i) I, James E Anderson, Professional Land Surveyor No. S-3127, hereby certify that the corner location on this record was determined by me or under my direction and control and that this U.S. Public Land Survey Monument Record is correct and complete to the best of my knowledge, and belief

James E. Anderson
SIGNATURE

05/22/2020
DATE

