

!Attention!

This PLSS corner is in the process of being updated by Forest County. An updated Tie Sheet will be available for this corner soon.

Please contact Kayla at the Forest County Land Information Department for more information.

Contact Info:

715-478-1387 or Kayla.L@co.forest.wi.us

U.S. PUBLIC LAND SURVEY MONUMENT RECORD

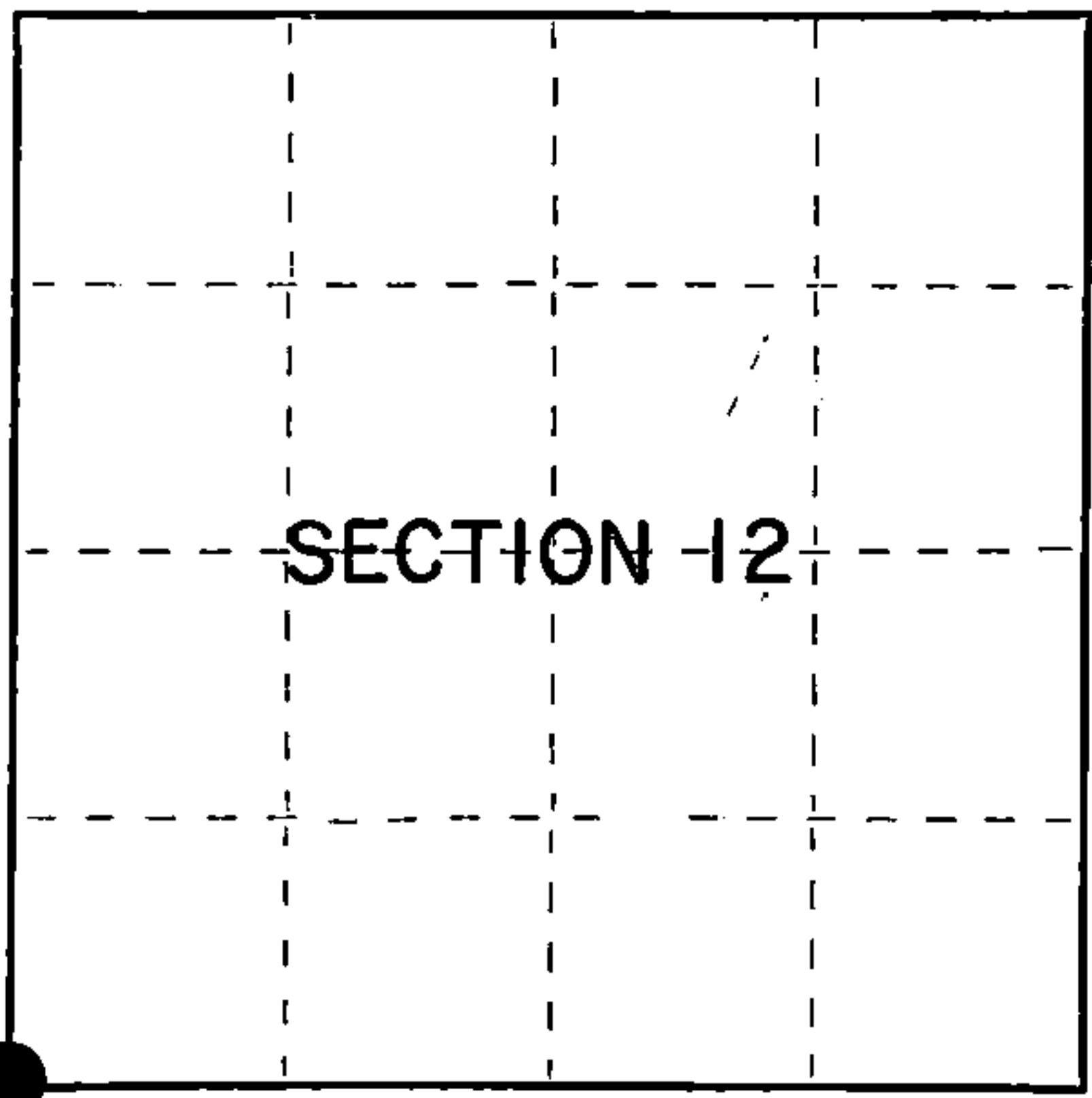
Index No. J-21

State of Wisconsin }
County of Forest } ss.

I William B. Cochrane, do hereby
certify that on the 2nd day
of August, 1983, I found
evidence of the Southwest Section
corner of Section 12
Township 38 North, Range
14 East, Fourth Principal Meridian,
as described hereon; and that from this evidence
I established a new monument and accessories
as described hereon to perpetuate the original
location of this corner.

Resident witnesses:

David Brownell



○ = Corner monument restored.

History of original corner establishment:

Original Government Survey in 1865 by H. & J.L. Nowlin. North between Sections
13 and 14, 80.00 chains, set Section Corner post to Sections 11, 12, 13, and 14,
from which the following bear:

Cedar	14"	N12°W	12 lks.
Fir	10"	N39°E	13 lks.

Description of corner evidence found:

Old Hwy 139 bears North and South, Forest Road #2593 bears West, and Forest Road
#2397 bears East.

I accept the intersection of these roads as the best available evidence for restoring
the corner position.

No original corner evidence was recovered.

Description of monument and accessories I established to perpetuate the original location of this corner.

At the restored corner position, set a 2½" diameter aluminum pipe monument, 3 feet
long, 3½ feet in the ground, with an aluminum cap stamped: T38N R14E, S11, S12, S13,
S14, 1983, S-1107. From which the following new blazed and scribed bearing trees bear:

B. Ash	6"	N51°E	60.47 feet
Spruce	11"	S 7°E	124.41 feet
Power Pole #78-2468		S54°W	32.69 feet

Dated at Hiles, Wis., this 28th day of March, 1985

Signature William B. Cochrane Title Land Surveyor Registration No. S-1107
(County Surveyor, Registered Land Surveyor, or other duly authorized official)

Office of Register of Deeds, County of Forest
I hereby certify that the within
instrument was filed in this office for record on the 24th day of April, 1985
at 1:00 o'clock P. M.

Paul Aschenbrenner
(Register of Deeds)

By Deputy

FORM NO. 985-A
H.C. Miller Company

Stock No. 26273

Document Number 127894

43814110000

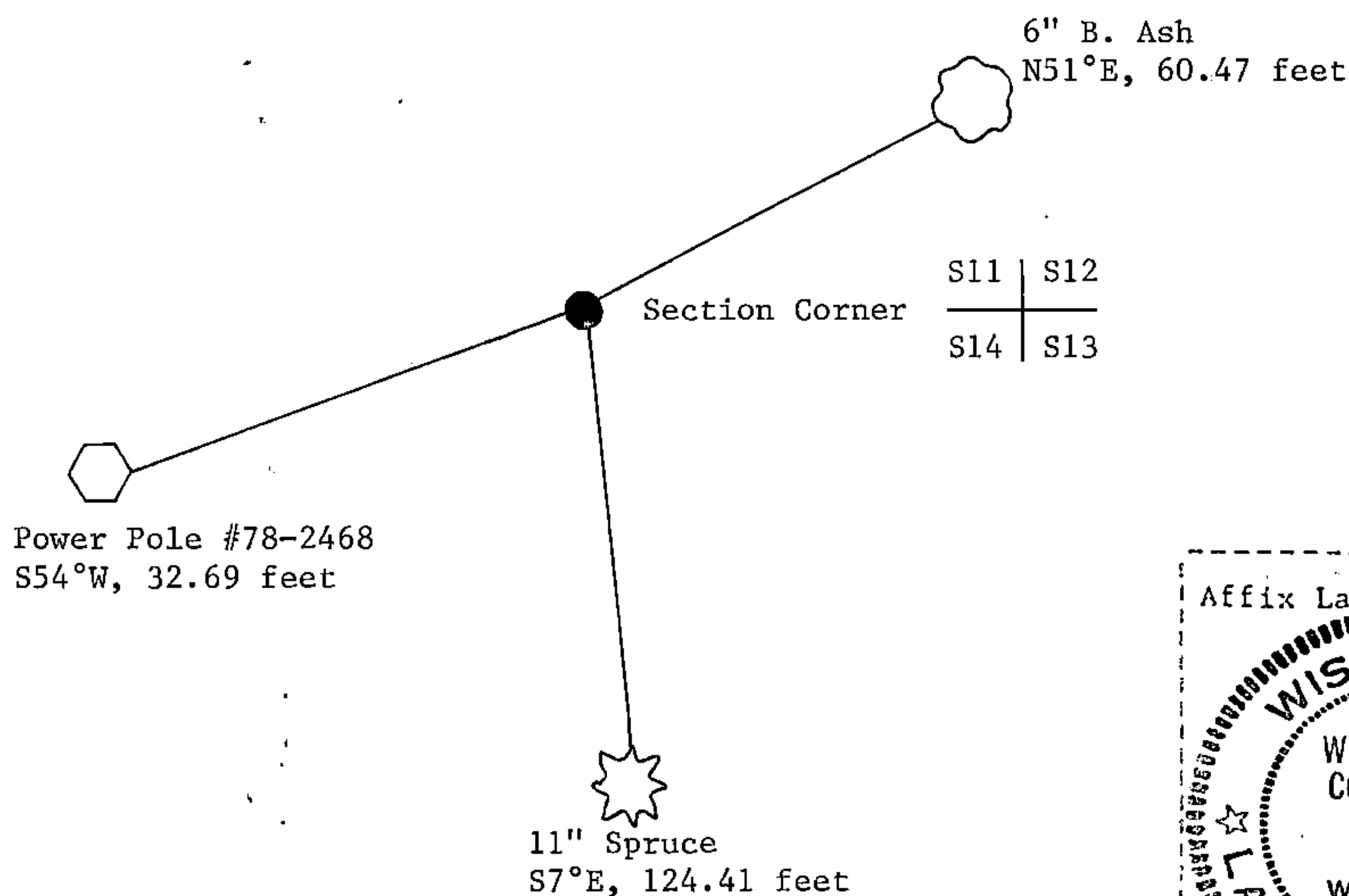
- (e) Describe any material discrepancy between the location of the corner as restored or reestablished and the location of that corner as previously restored or reestablished by distance and direction. Show the discrepancy on the plan view drawing under (d), above. Show the distances between the corner as previously restored or reestablished and (1) the corner as restored or reestablished, and (2) to at least 2 of the witness monuments shown on the drawing in (d), above.

See drawing below.

- (f) Was the corner restored through acceptance of (1) an obliterated evidence location, or, (2) a found perpetuated location?

Restored from accepted evidence.

- (g&h) Was the corner reestablished through lost corner proportionate methods? If so, show the method, including the directions and distances to other public land survey corners used as evidence or used for proportioning in determining the corner location?



(i) William B. Cochrane

(type or print name) certify that the corner location shown on this record was determined by me or under my direction and control and that this U.S. Public Land Survey Monument Record is correct and complete to the best of my knowledge and belief.

William B. Cochrane
Signature

March 28 1985
Date

