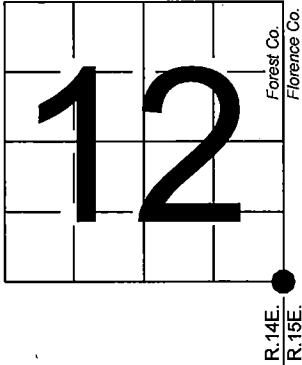


U. S. PUBLIC LAND SURVEY MONUMENT RECORD

NOTE: This form is intended and designed to fulfill all requirements of Wisconsin Administrative Code, Chapter A-E 7.08 U.S. Public Land Survey Monument Record (3) (a-1)

A-E 7.08(3)(a) Identity of corner:
Southeast Corner Section 12,
Township 38 North, Range 14 East
of the Fourth Principal Meridian,
Town of Popple River, Forest County,
Wisconsin

WISCRS - FOREST COUNTY
N: 647,119.303 USft (XXX,XXX.XXX)
E: 894,172.857 USft (XXX,XXX.XXX)
Datum: NAD83 (2011)
GNSS Method RTK
GNSS Control WISCORS VRS



The coordinate value shown has been verified by the average of two or more GPS observations at a markedly different time. Coordinates shown in parenthesis are previously published values.

A-E 7.08(3)(b)

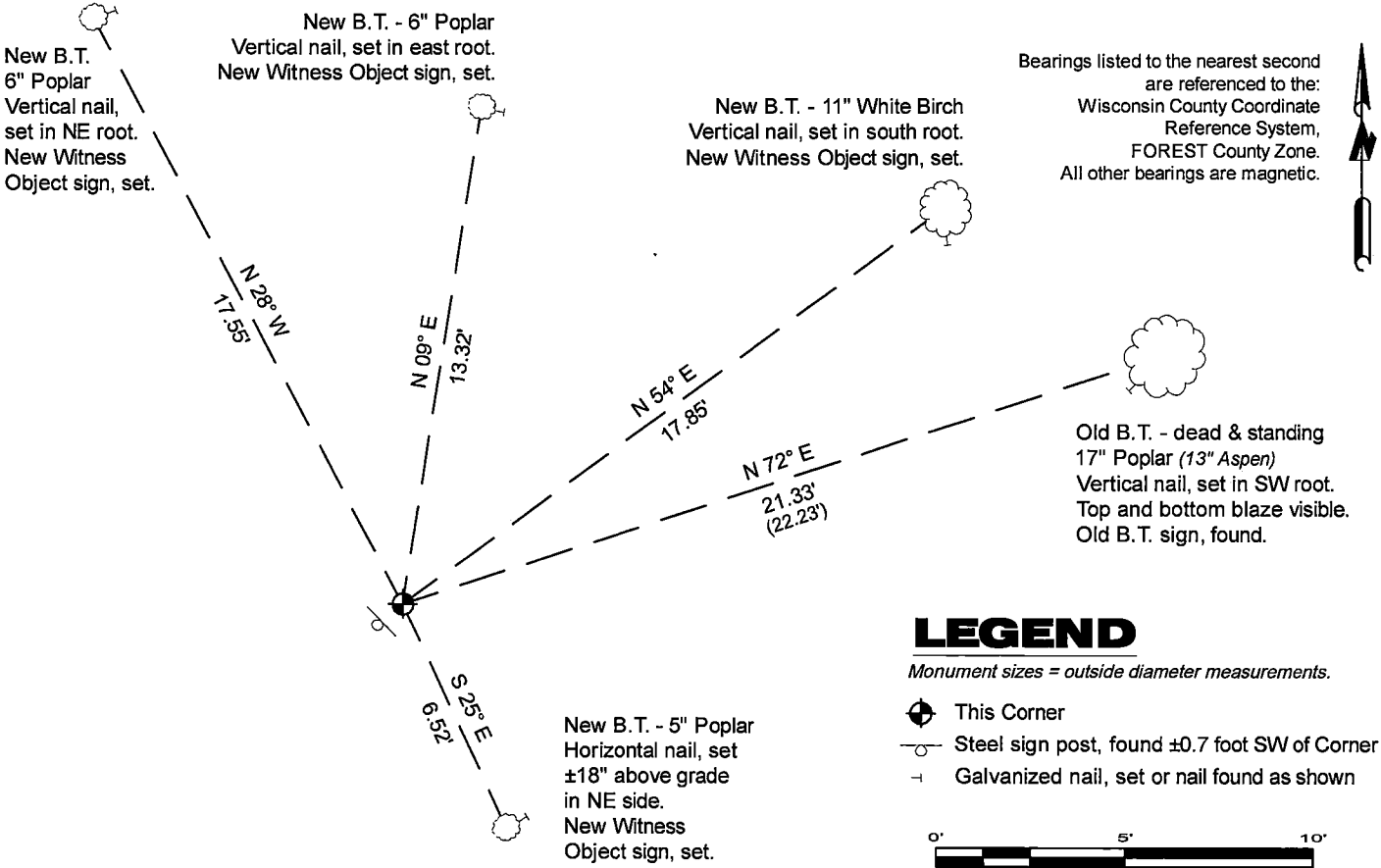
Original Surveyor: Artemas Curtis - October 1857
Fir 8 - S 37° W, 33 Links, Fir 10 - N 85° W, 26 Links
Fir 8 - N 56° E, 40 Links, Fir 12 - S 63° E, 45 Links

See previous U.S. Public Land Survey Monument Record - J-25 - April 3, 1985 - Surveyor 1107 - William B. Cochrane - THENCE:

- 1985 - Surveyor 1107 - William B. Cochrane - indicates this position as "2 1/2" aluminum pipe monument with an aluminum cap stamped to identify corner" on Forest Co. record Map #381412-19870224 and #381413-19870224.
- April 01, 2019 - Surveyor 1897 - Randy R. Erickson - indicates this position as "recovered monument set to Forest Service standard" on Forest Co. record Map #381413-20190401.

November 13, 2024 - In performing the 2024 - Forest County - "PLSS Corner Remonumentation and GPS Services" project, I found a 2.25" diameter aluminum pipe monument with a 3.25" diameter aluminum cap stamped to identify the corner. The monument is on highland on the south face of a hill and extends ±12" above grade. I also found 1 of Cochrane's bearing trees dead and standing. I established 4 new reference monuments as shown below.

A-E 7.08(3)(c)(d) Plan view of corner with references to at least 4 witness monuments.

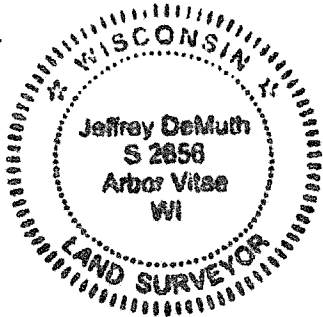


A-E 7.08(3)(e) 1857 Surveyor set a post, 1985 Surveyor set a 2 1/2" diameter aluminum pipe monument, with aluminum cap stamped to identify corner, 2019 Surveyor found a monument. I found a 2.25" diameter aluminum pipe monument with a 3.25" diameter aluminum cap stamped to identify the corner in 2024.

A-E 7.08(3)(f) I accept this monument in good faith as a FOUND PERPETUATED LOCATION of the corner.

A-E 7.08(3)(g)(h) This corner was previously determined through lost-corner-proportionate methods.

A-E 7.08(3)(i) I, Jeffrey L. DeMuth, Professional Land Surveyor No. S-2656, hereby certify that the corner location on this record was determined by me or under my direction and control, and that this U.S. Public Land Survey Monument Record is correct and complete to the best of my knowledge, and belief.



SIGNATURE

November 25, 2024

DATE

43814120000

43814120000

J25

U.S. PUBLIC LAND SURVEY MONUMENT RECORD

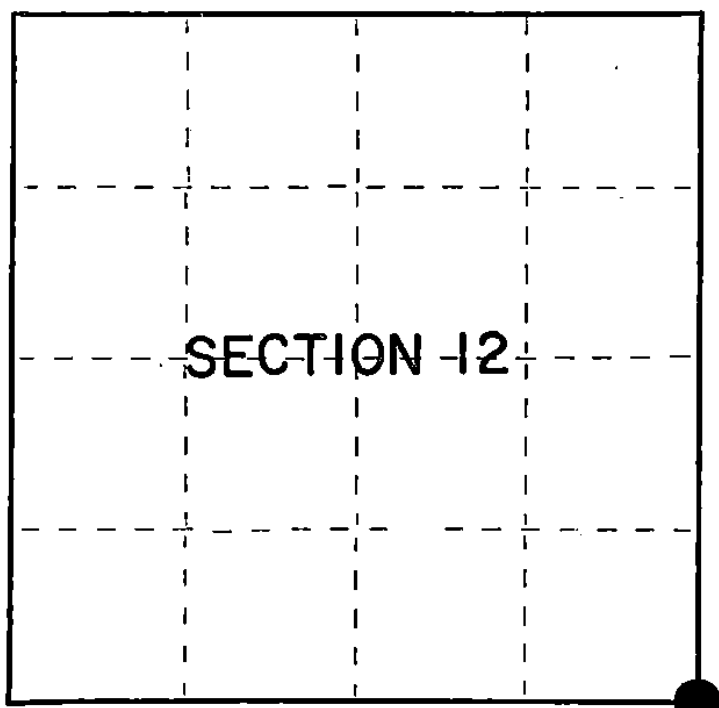
Index No. J-25

State of Wisconsin }
County of Forest } ss.

I, William B. Cochrane, do hereby
certify that on the 27th day
of September, 1983, I found
evidence of the Southeast Section
corner of Section 12
Township 38, North, Range
14 East, Fourth Principal Meridian,
as described hereon; and that from this evidence
I established a new monument and accessories
as described hereon to perpetuate the original
location of this corner.

Resident witnesses:

Tony Tillman



○ = Corner monument restored.

History of original corner establishment:

Original Government Survey in 1857 by Artemas Curtis. North between Sections
13 and 18, 80.00 chains, set Section Corner post to Sections 7, 12, 13, and 18,
from which the following bear:

Fir	8"	S37°W	33 lks.
Fir	10"	N85°W	26 lks.
Fir	8"	N56°E	40 lks.
Fir	12"	S63°E	45 lks.

Description of corner evidence found:

No original corner evidence was recovered.

The corner position was restored at proportionate distance and on line between
the Northeast Section Corner of Section 12, and the Southeast Section Corner of
Section 13.

Description of monument and accessories I established to perpetuate the original location of this corner.

At the restored corner position, set a 2½" diameter aluminum pipe monument, 3 feet
long, 30 inches in the ground, with an aluminum cap stamped: T38N, R14E, R15E,
S7, S12, S13, S18, 1983, S-1107. From which the following new blazed and scribed
bearing trees bear:

Aspen	13"	N72°E	22.23 feet
Spruce	13"	S14°E	57.95 feet
Birch	8"	N77°W	23.00 feet
Steel Sign Post		SW	0.50 feet

Dated at Hiles, Wis., this 3rd day of April, 1985.

Signature: William B. Cochrane Title: Land Surveyor Registration No. S-1107
(County Surveyor, Registered Land Surveyor, or other duly authorized official)

Office of Register of Deeds, County of Forest, I hereby certify that the within
instrument was filed in this office for record on the 24th day of April, 1985
at 1:00 o'clock P. M.

Paul Aschenbrenner
(Register of Deeds)

By Deputy

FORM NO. 985-A
H.C. Miller Company
MINNEAPOLIS, MINN.

Stock No. 26273

Document Number 127896

4381412-0000

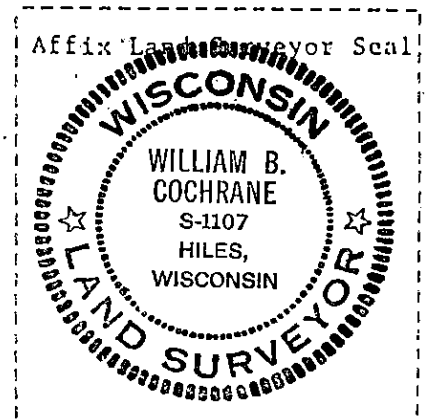
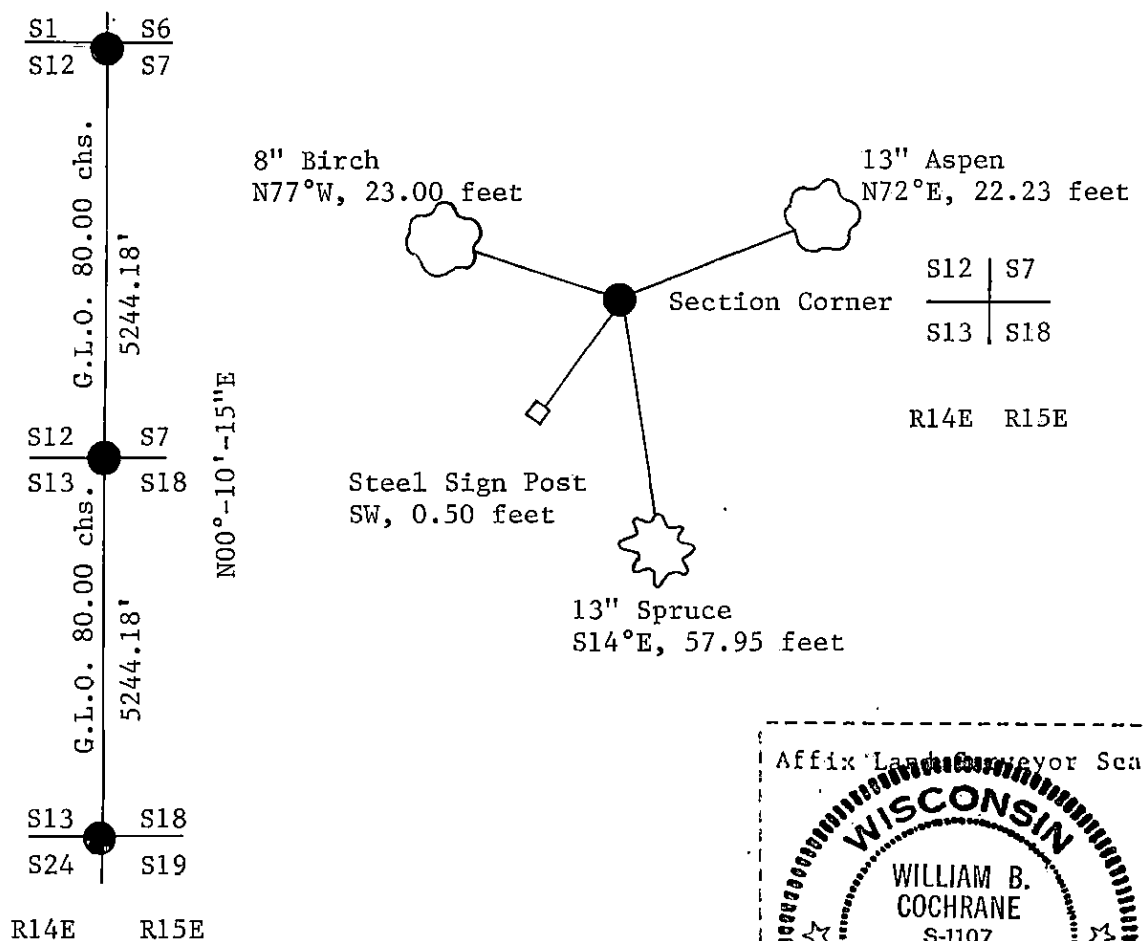
- (e) Describe any material discrepancy between the location of the corner as restored or reestablished and the location of that corner as previously restored or reestablished by distance and direction. Show the discrepancy on the plan view drawing under (d), above. Show the distances between the corner as previously restored or reestablished and (1) the corner as restored or reestablished, and (2) to at least 2 of the witness monuments shown on the drawing in (d), above.

See drawing below.

- (r) Was the corner restored through acceptance of (1) an obliterated evidence location, or, (2) a found perpetuated location?

Restored through lost corner proportionate methods.

- (g&h) Was the corner reestablished through lost corner proportionate methods? If so, show the method, including the directions and distances to other public land survey corners used as evidence or used for proportioning in determining the corner location?



- (i) William B. Cochrane
(type or print name) certify that the corner location shown on this record was determined by me or under my direction and control and that this U.S. Public Land Survey Monument Record is correct and complete to the best of my knowledge and belief.

William B. Cochrane
Signature

April 3, 1985
Date