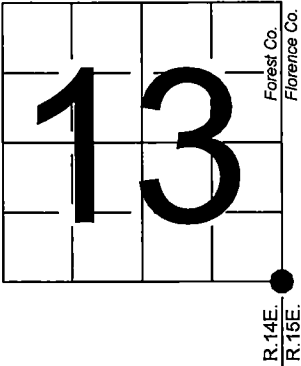


U. S. PUBLIC LAND SURVEY MONUMENT RECORD

NOTE: This form is intended and designed to fulfill all requirements of Wisconsin Administrative Code, Chapter A-E 7.08 U.S. Public Land Survey Monument Record (3) (a-i)

A-E 7.08(3)(a) Identity of corner:
Southeast Corner Section 13,
Township 38 North, Range 14 East
of the Fourth Principal Meridian,
Town of Popple River, Forest County,
Wisconsin

WISCRS - FOREST COUNTY
N: 641,875.902 USft (XXX,XXX.XXX)
E: 894156.707 USft (XXX,XXX.XXX)
Datum: NAD83 (2011)
GNSS Method RTK
GNSS Control WISCORS VRS



The coordinate value shown has been verified by the average of two or more GPS observations at a markedly different time. Coordinates shown in parenthesis are previously published values.

A-E 7.08(3)(b)

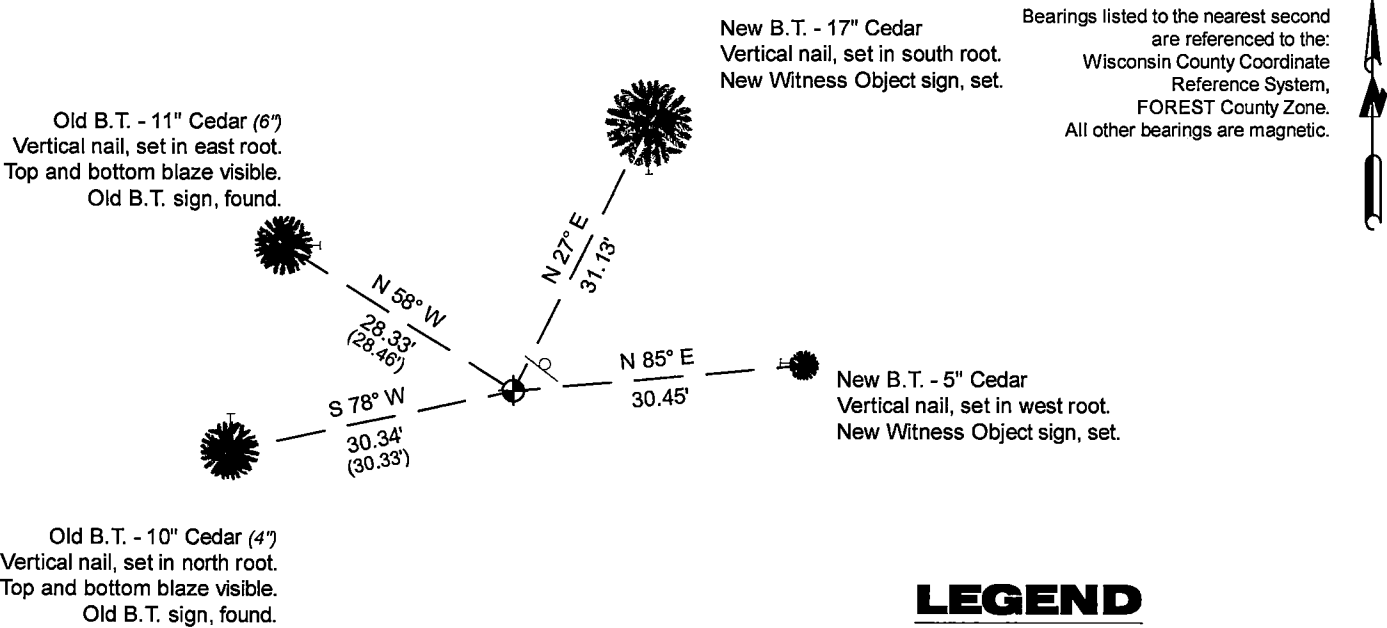
Original Surveyor: Artemas Curtis - October 1857
Cedar 10 - S 38° W, 40 Links, Cedar 7 - N 72° W, 10 Links
Cedar 5 - N 60° E, 20 Links, Cedar 16 - S 27° E, 17 Links

See previous U.S. Public Land Survey Monument Record - N-25 - March 12, 1985 - Surveyor 1107 - William B. Cochrane - THENCE:

- 1985 - Surveyor 1107 - William B. Cochrane - indicates this position as "Forest County recorded monument" on Forest Co. record Map #381413-19870224 and #381424-19870224.
- April 11, 1987 - Surveyor 1682 - Glen Barker - indicates this position as "2 1/2" aluminum pipe w/ 3-1/4" alloy cap found" on Forest Co. record Map #381424-19870411.
- May 20, 2014 - Surveyor 1783 - Thomas J. McGuire - indicates this position as "found 2 1/2" iron pipe w/ 3-1/4" cap" on Forest Co. record Map #381424-20140520.
- April 01, 2019 - Surveyor 1897 - Randy R. Erickson - indicates this position as "recovered monument set to Forest Service standard" on Forest Co. record Map #381413-20190401.

November 13, 2024 - In performing the 2024 - Forest County - "PLSS Corner Remonumentation and GPS Services" project, I found a 2.25" diameter aluminum pipe monument with a 3.25" diameter aluminum cap stamped to identify the corner. The monument is in a cedar swamp and extends ±6" above grade. I also found 2 of Cochrane's bearing trees alive and in good condition. I established 2 new reference monuments as shown below.

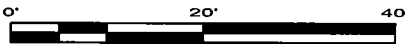
A-E 7.08(3)(c)(d) Plan view of corner with references to at least 4 witness monuments.



LEGEND

Monument sizes = outside diameter measurements.

- ⊕ This Corner
- Steel post, found ±1.5 foot NE of Corner
- ⊖ Galvanized nail, set or nail found as shown



A-E 7.08(3)(e) 1857 Surveyor set a post, 1985 Surveyor found a 2 1/2" diameter aluminum pipe monument, with aluminum cap stamped to identify corner, 1987 Surveyor found the same, 2014 Surveyor found a 2 1/2" iron pipe with 3 1/4" cap, 2019 Surveyor found a monument. I found a 2.25" diameter aluminum pipe monument with a 3.25" diameter aluminum cap stamped to identify the corner in 2024.

A-E 7.08(3)(f) I accept this monument in good faith as a FOUND PERPETUATED LOCATION of the corner.

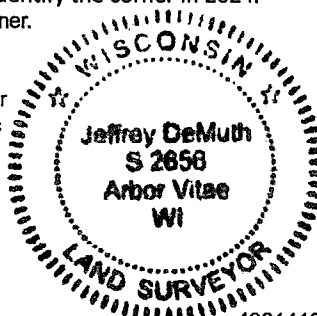
A-E 7.08(3)(g)(h) This corner was previously determined through lost-corner-proportionate methods.

A-E 7.08(3)(i) I, Jeffrey L. DeMuth, Professional Land Surveyor No. S-2656, hereby certify that the corner location on this record was determined by me or under my direction and control, and that this U.S. Public Land Survey Monument Record is correct and complete to the best of my knowledge, and belief.

SIGNATURE

November 25, 2024

DATE



43814130000

43814130000

N25

CERTIFIED LAND CORNER RESTORATION

Index No. **N25**

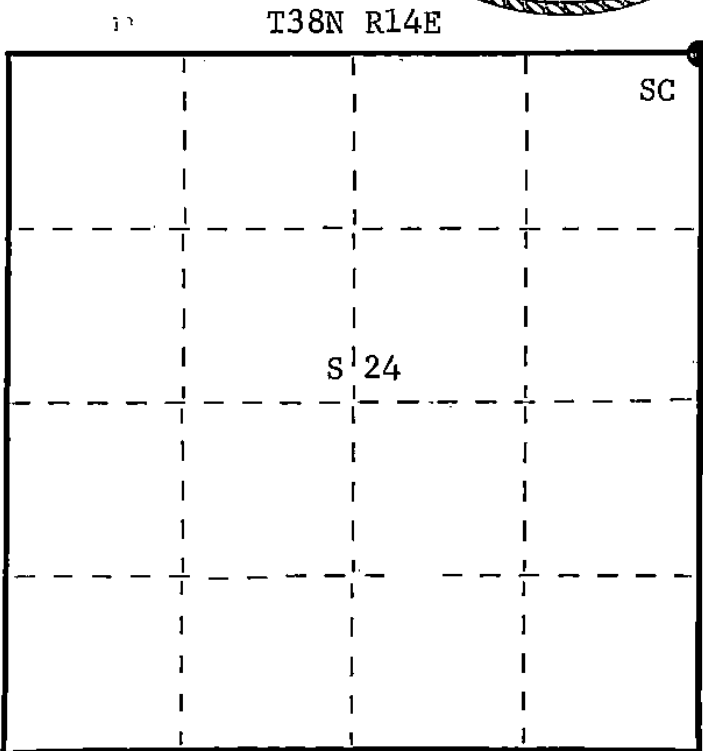
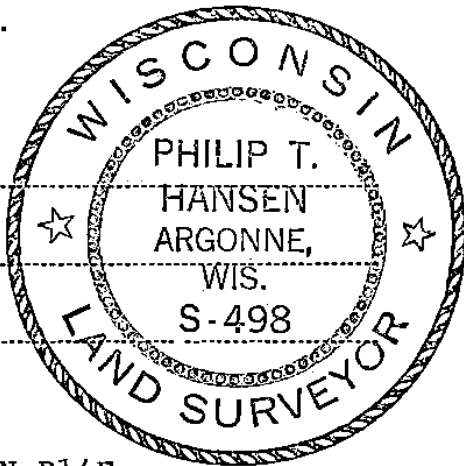
State of Wisconsin }
County of Forest } ss.

I Philip T. Hansen, do hereby
certify that on the 6th day
of January, 1976, I found
evidence of the Section
corner of S13, 24, 19-18
Township 38
14 and 15, North, Range
as described hereon; and that from this evidence
I established a new monument and accessories
as described hereon to perpetuate the original
location of this corner.

Resident witnesses:

Glen Barker

Jim Claflin



○ = Corner monument restored.

History of original corner establishment: Original corner established by Artemas Curtiss, Deputy Surveyor, in 1857 from which yellow birch 12" bears N44°W, 11 links, yellow birch 10" bears N45°E, 25 links, hemlock 20" bears S48°E, and spruce 14" bears S67°W, 50 links.

Corner recovered by Ray Leigh, Consolidated Forester, during cruising and mapping of this area.

Description of corner evidence found: Recovered 6" squared cedar post in poor condition.
No evidence of OBT's recovered.

Description of monument and accessories I established to perpetuate the original location of this corner.

Replaced 6" squared cedar post with 2-1/2" Berntsen, A-1 Federal Monument, aluminum with magnet installed in cap and base. Pipe projects 18" above ground. Cap stamped - S498 T38N

NBT's - Cedar 7" N54°E 38.8 links scribed SC BT
Cedar 6" N73°W 18 links scribed SC BT
Cedar 8" S14°E 29 links scribed SC BT

R 13 18 R
14 Sec. 24 19 15
E E
1975

Cedar post set beside new pipe.
Pipe, post, and NBT's painted blue.

Dated at Argonne, Wis., this 13th day of January, 1976.

Signature Philip T. Hansen Title Registered Land Surveyor Registration No. S-498
(County Surveyor, Registered Land Surveyor, or other duly authorized official)

Office of Register of Deeds, County of Forest, I hereby certify that the within
instrument was filed in this office for record on the 4th day of February, 1976.
at 4:00 o'clock P. M.

Eugene Staszny
(Register of Deeds)

By Deputy

DOCUMENT NUMBER 108701

U.S. PUBLIC LAND SURVEY MONUMENT RECORD

Index No. **N-25**

State of Wisconsin }
County of Forest } ss.

I William B. Cochrane, do hereby
certify that on the 25th day
of February, 1985, I found
evidence of the Northeast Section
corner of Section 24
Township 38, North, Range
14 East, Fourth Principal Meridian,
as described hereon; and that from this evidence
I established a new monument and accessories
as described hereon to perpetuate the original
location of this corner.

Resident witnesses:

David Brownell

History of original corner establishment:

Original Government Survey in 1857 by Artemas Curtis. North between Sections 19 and 24,
80.00 chains, set Section corner post to Sections 13, 18, 19, and 24. From which the
following bear:

Cedar	10"	S38°W	40 lks.
Cedar	7"	N72°W	10 lks.
Cedar	5"	N60°E	20 lks.
Cedar	16"	S27°E	17 lks.

Description of corner evidence found:

2½" diameter aluminum pipe monument, with an aluminum cap stamped: T38N, R14E, R15E,
S13, S18, S19, S24, S-498, 1976, Forest County. From which the following bear:

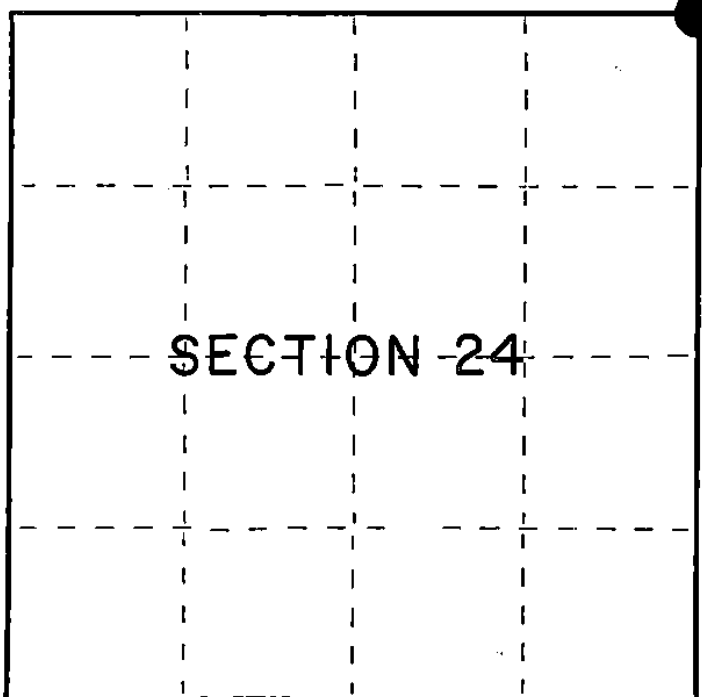
Cedar	10"	N55°E	26.74 feet
-------	-----	-------	------------

No original corner evidence was recovered.

Description of monument and accessories I established to perpetuate the original location of this corner.

Blazed and scribed the following new bearing trees:

Cedar	12"	S31°E	31.78 feet
Cedar	4"	S78°W	30.33 feet
Cedar	6"	N58°W	28.46 feet
Steel sign post		NE	0.50 feet



○ = Corner monument restored.

Dated at Hiles, Wis., this 12th day of March, 1985

Signature William B. Cochrane Title Land Surveyor Registration No. S-1107
(County Surveyor, Registered Land Surveyor, or other duly authorized official)

Office of Register of Deeds, County of Forest, I hereby certify that the within
instrument was filed in this office for record on the 24th day of April, 1985
at 1:00 o'clock P. M.

Paul Aschenbrenner
(Register of Deeds)

By _____ Deputy

FORM NO. 985-A

K.C. Miller Company

Stock No. 26273

Document Number 127893

43814130000

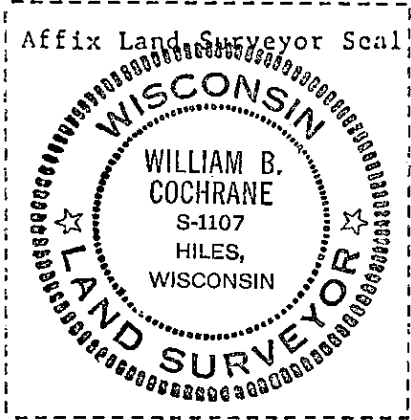
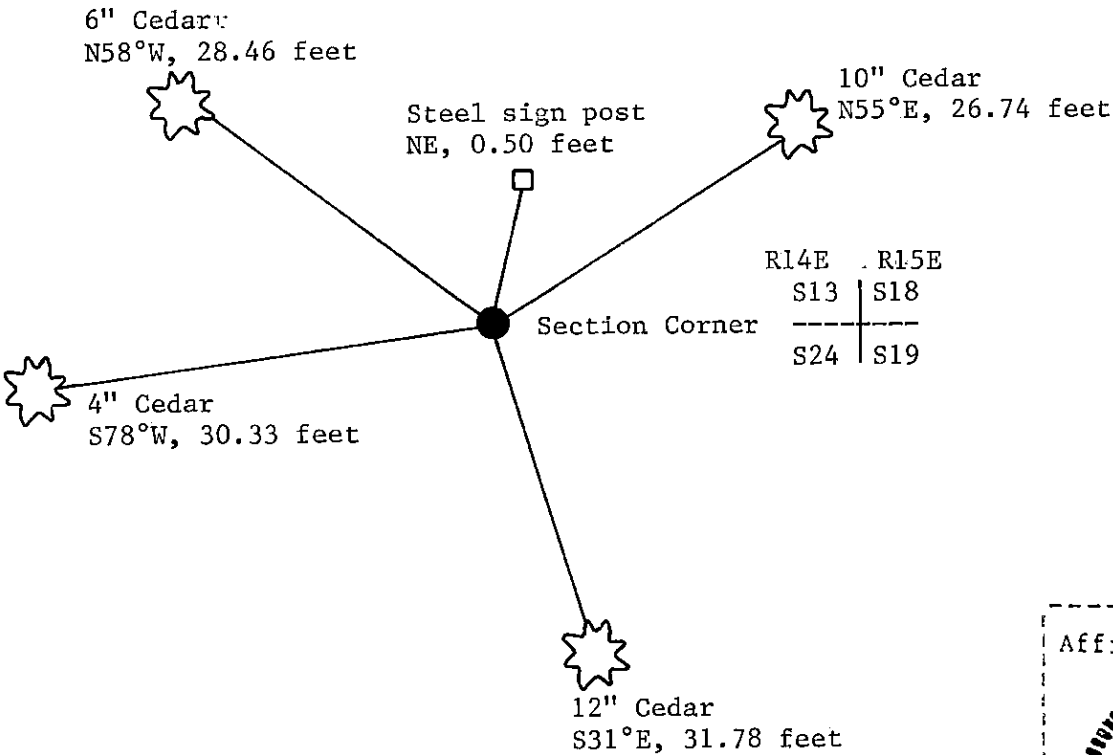
(e) Describe any material discrepancy between the location of the corner as restored or reestablished and the location of that corner as previously restored or reestablished by distance and direction. Show the discrepancy on the plan view drawing under (d), above. Show the distances between the corner as previously restored or reestablished and (1) the corner as restored or reestablished, and (2) to at least 2 of the witness monuments shown on the drawing in (d), above.

See drawing below.

(f) Was the corner restored through acceptance of (1) an obliterated evidence location, or, (2) a found perpetuated location?

Restored through acceptance of a found perpetuated location.

(g&h) Was the corner reestablished through lost corner proportionate methods? If so, show the method, including the directions and distances to other public land survey corners used as evidence or used for proportioning in determining the corner location?



(i) I, William B. Cochrane
(type or print name) certify that the corner location shown on this record was determined by me or under my direction and control and that this U.S. Public Land Survey Monument Record is correct and complete to the best of my knowledge and belief.

William B. Cochrane
Signature

March 12, 1985
Date