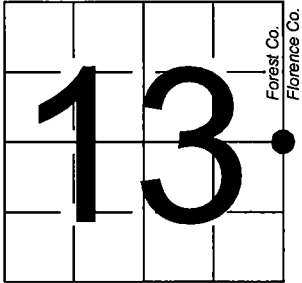


U. S. PUBLIC LAND SURVEY MONUMENT RECORD

NOTE: This form is intended and designed to fulfill all requirements of Wisconsin Administrative Code, Chapter A-E 7.08 U.S. Public Land Survey Monument Record (3) (a-i)

A-E 7.08(3)(a) Identity of corner:  
East 1/4 Corner Section 13,  
Township 38 North, Range 14 East  
of the Fourth Principal Meridian,  
Town of Popple River, Forest County,  
Wisconsin

WISCRS - FOREST COUNTY  
N: 644,497.800 USft (XXX,XXX.XXX)  
E: 894,165.121 USft (XXX,XXX.XXX)  
Datum: NAD83 (2011)  
GNSS Method RTK  
GNSS Control WISCORS VRS



The coordinate value shown has been verified by the average of two or more GPS observations at a markedly different time. Coordinates shown in parenthesis are previously published values.

A-E 7.08(3)(b)

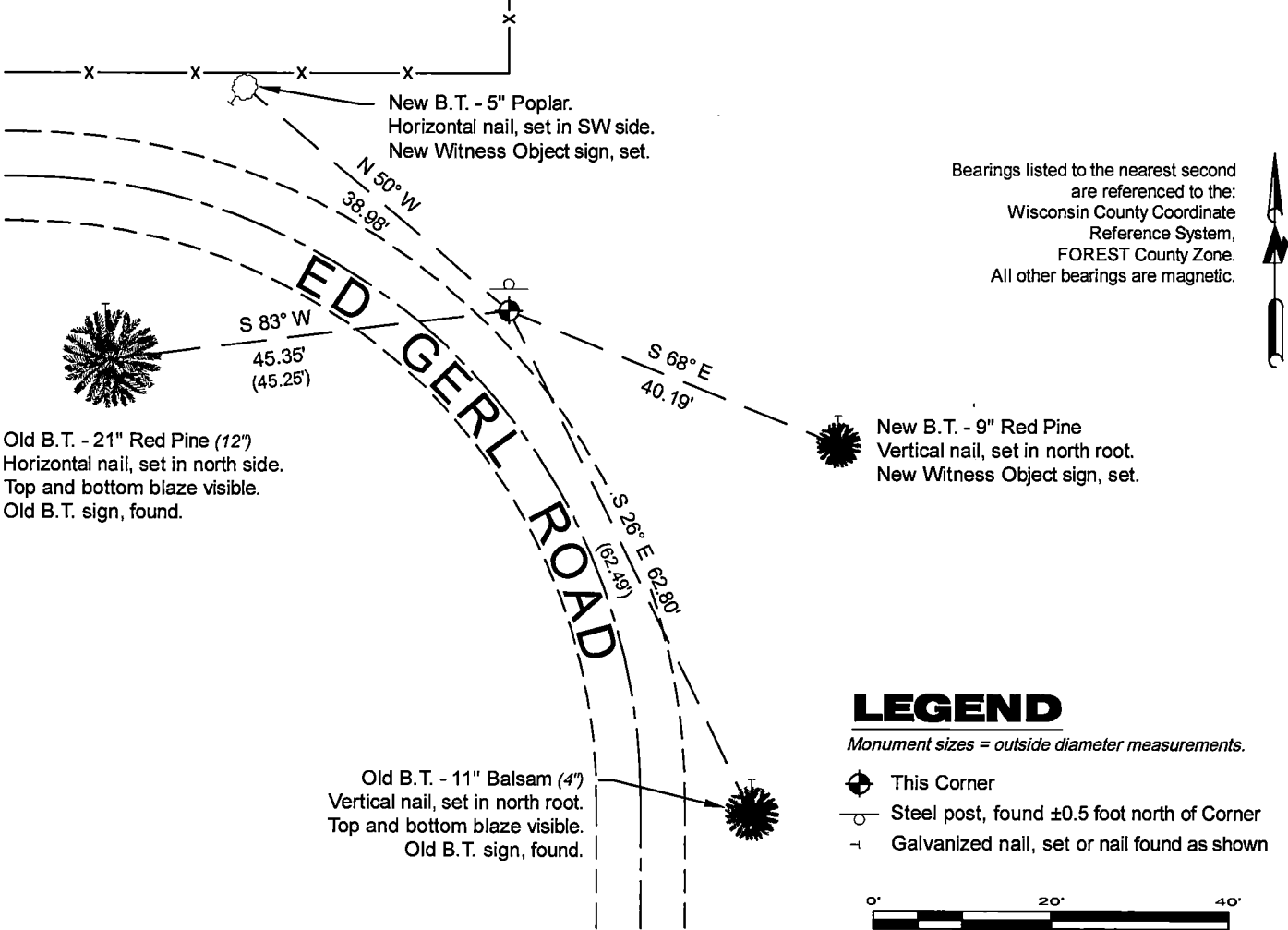
Original Surveyor: Artemas Curtis - October 1857  
Yellow Birch 14 - S 55° W, 33 Links, Yellow Birch 16 - N 44° E, 33 Links,

See previous U.S. Public Land Survey Monument Record - L-25 - April 2, 1985 - Surveyor 1107 - William B. Cochrane - THENCE:

- 1985 - Surveyor 1107 - William B. Cochrane - indicates this position as "2 1/2" diameter aluminum pipe monument" on Forest Co. record Map #381413-19870224.
- April 01, 2019 - Surveyor 1897 - Randy R. Erickson - indicates this position as "recovered monument set to Forest Service standard" on Forest Co. record Map #381413-20190401.

May 14, 2024 - In performing the 2024 - Forest County - "PLSS Corner Remonumentation and GPS Services" project, I found a 2.25" diameter aluminum pipe monument with a 3.25" diameter aluminum cap stamped to identify the corner. The monument is at the east end of Ed Gerl Road where the road bends to the south and extends ±6" above grade. I also found 2 of Cochrane's bearing trees alive and in good condition. I established 2 new reference monuments as shown below.

A-E 7.08(3)(c)(d) Plan view of corner with references to at least 4 witness monuments.



A-E 7.08(3)(e) 1857 Surveyor set a post, 1985 Surveyor set a 2 1/2" diameter aluminum pipe monument, with aluminum cap stamped to identify corner, 2019 Surveyor found a monument. I found a 2.25" diameter aluminum pipe monument with a 3.25" diameter aluminum cap stamped to identify the corner in 2024.

A-E 7.08(3)(f) I accept this monument in good faith as a FOUND PERPETUATED LOCATION of the corner.

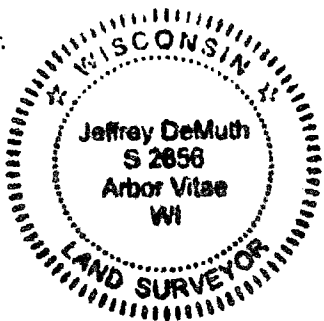
A-E 7.08(3)(g)(h) This corner was previously determined through lost-corner-proportionate methods.

A-E 7.08(3)(i) I, Jeffrey L. DeMuth, Professional Land Surveyor No. S-2656, hereby certify that the corner location on this record was determined by me or under my direction and control, and that this U.S. Public Land Survey Monument Record is correct and complete to the best of my knowledge, and belief.

SIGNATURE

November 25, 2024

DATE



43814132000

43814132000

L25

U.S. PUBLIC LAND SURVEY MONUMENT RECORD

Index No. L-25

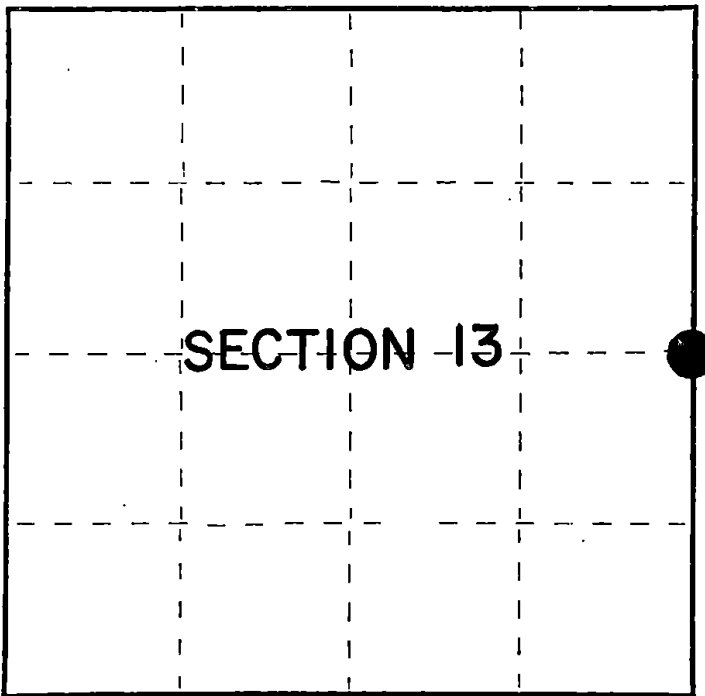
State of Wisconsin }  
County of Forest } ss.

I William B. Cochrane, do hereby  
certify that on the 18th day  
of January, 1983, I found  
evidence of the East Quarter  
corner of Section 13  
Township 38, North, Range  
14 East, Fourth Principal Meridian,  
as described hereon; and that from this evidence  
I established a new monument and accessories  
as described hereon to perpetuate the original  
location of this corner.

Resident witnesses:

David Brownell

Tony Tillman



○ = Corner monument restored.

History of original corner establishment:

Original Government Survey in 1857 by Artemas Curtis. North between Sections 13 and 18,  
40.00 chains, set Quarter Corner post to Sections 13 and 18, from which the  
following bear:

Y. Birch	14"	S55°W	33 lks.
Y. Birch	16"	N44°E	33 lks.

Description of corner evidence found:

No original Corner evidence was recovered.

The corner position was restored at proportionate distance and on line between the  
Northeast and Southeast Section Corners of Section 13.

Description of monument and accessories I established to perpetuate the original location of this corner.

At the restored corner position, set a 2½" diameter aluminum pipe monument, 3 feet long,  
30 inches in the ground, with an aluminum cap stamped: T38N, R14E, R15E, 1/4, S13,  
S18, 1983, S-1107. From which the following new blazed and scribed bearing trees bear:

Power Pole#N72-3767	N88°E	42.01 feet	
Balsam	4"	S26°E	63.49 feet
R. Pine	12"	S83°W	45.25 feet

Dated at Hiles, Wis., this 2nd day of April, 1985

Signature William B. Cochrane Title Land Surveyor Registration No. S-1107  
(County Surveyor, Registered Land Surveyor, or other duly authorized official)

Office of Register of Deeds, County of Forest, I hereby certify that the within  
instrument was filed in this office for record on the 24th day of April, 1985  
at 1:00 o'clock P. M.

Paul Aschenbrenner  
(Register of Deeds)

By \_\_\_\_\_ Deputy

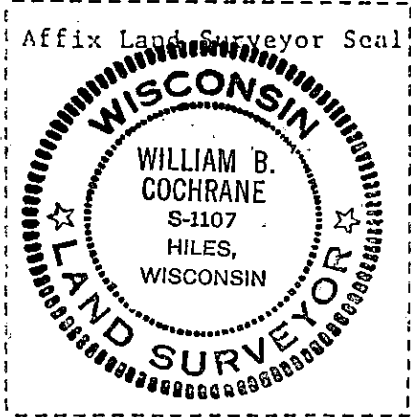
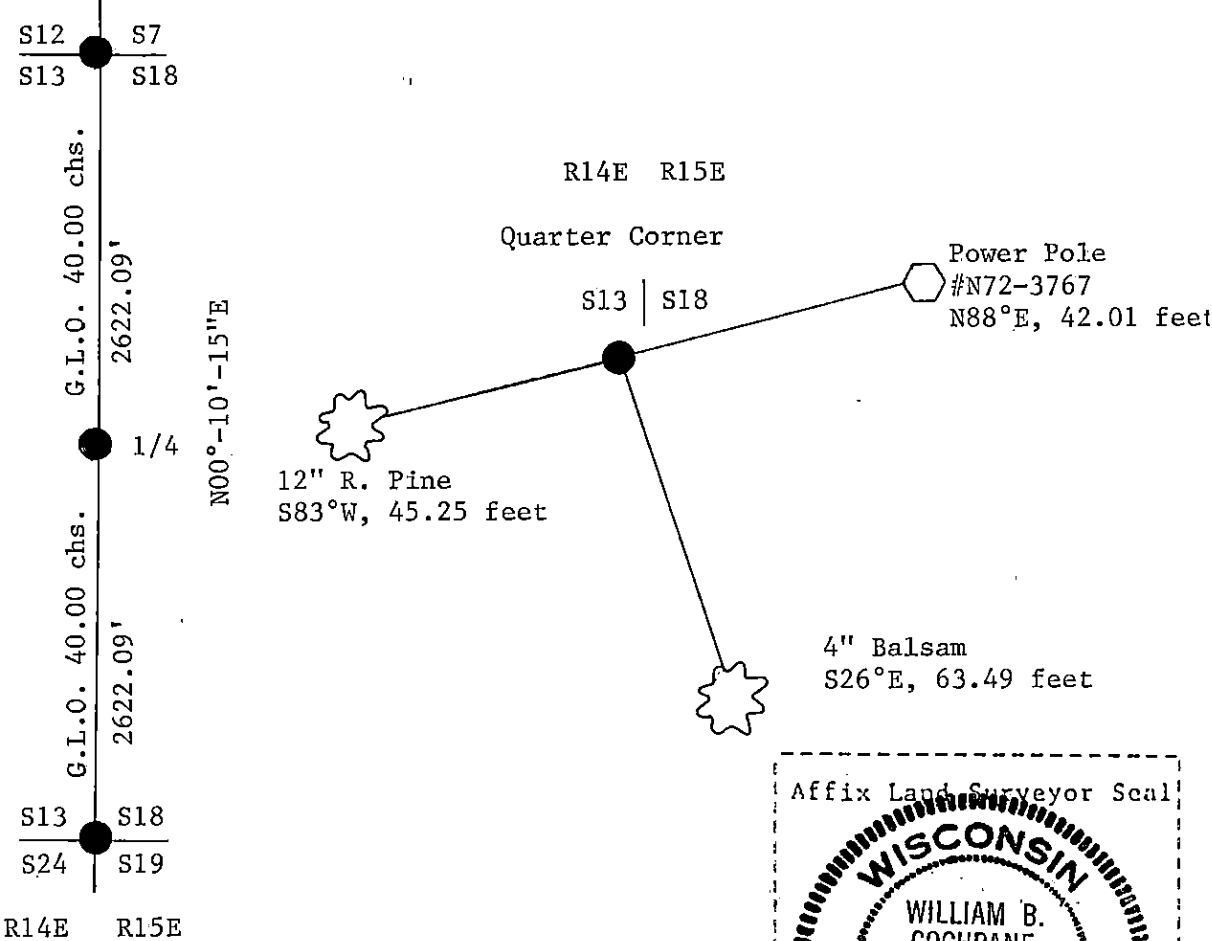
(e) Describe any material discrepancy between the location of the corner as restored or reestablished and the location of that corner as previously restored or reestablished by distance and direction. Show the discrepancy on the plan view drawing under (d), above. Show the distances between the corner as previously restored or reestablished and (1) the corner as restored or reestablished, and (2) to at least 2 of the witness monuments shown on the drawing in (d), above.

See drawing below.

(f) Was the corner restored through acceptance of (1) an obliterated evidence location, or, (2) a found perpetuated location?

Restored through lost corner proportionate methods.

(g&h) Was the corner reestablished through lost corner proportionate methods? If so, show the method, including the directions and distances to other public land survey corners used as evidence or used for proportioning in determining the corner location?



(i) I, William B. Cochrane  
(type or print name) certify that the corner location shown on this record was determined by me or under my direction and control and that this U.S. Public Land Survey Monument Record is correct and complete to the best of my knowledge and belief.

William B. Cochrane April 2, 1985  
Signature Date