

U.S. PUBLIC LAND SURVEY MONUMENT RECORD

NO. 4 38 14 23 00 00
R-21

HISTORY OF ORIGINAL CORNER ESTABLISHMENT:

1.) 1865 - H.&J.L. NOWLIN, ORIGINAL GOVERNMENT SURVEY. NORTH BETWEEN SECTIONS 25 AND 26, 80.00 CHAINS, SET SECTION CORNER POST TO SECTIONS 23, 24, 25, AND 26 FROM WHICH THE FOLLOWING BEAR: 12" LINDEN, N 79° E, 9 LINKS AND 12" BIRCH N 31° W 36 LINKS.
2.) 1983 - SEPT. 19TH, W. COCHRANE FOUND NO EVIDENCE OF THE ORIGINAL CORNER. CORNER POSITION FALLS IN HWY 139 AND WAS RESTORED USING THE MEASUREMENTS AS SHOWN ON THE STATE HIGHWAY DIVISION JOB #7115. PLAN DATED 9/2/47. HE SET A 2.5" DIA. ALUM. PIPE MON. 3' LONG, 30" IN THE GROUND, WITH AN ALUMINUM CAP STAMPED: T38N, R14E, S23, S24, S25, S26, 1983, S-1107, WITH THE FOLLOWING TIES: 14" BASSWOOD S63°E 83.20', POWER POLE #73-2567 S20°W 117.45', AND STEEL SIGN POST WEST ONE FOOT.

DESCRIPTION OF CORNER EVIDENCE FOUND:

ON JUNE 19, 2025 RASMITH FOUND NO EVIDENCE OF THE ALUMINUM PIPE MONUMENT. THE POWER POLE AND BASSWOOD TREE TIES WERE RECOVERED. SECTION SUMMARIES ON FILE FROM 1986 SHOWING THE WEST QUARTER CORNER OF SEC. 24, THE WEST QUARTER CORNER OF SECTION 25, AND THE NORTH QUARTER CORNER OF SECTION 26, WERE USED TO RE-ESTABLISH THE POSITION OF THE CORNER. THE POSITION FIT WELL WITH THE SURVEYS ON FILE. A 1-1/4" REBAR, 30" LONG WAS SET AT THE CORNER AND ADDITIONAL TIES WERE SET AS SHOWN.

246180

FILED ON:

07/17/2025 02:00 PM

CORTNEY BRITTEN CLEEREMAN
REGISTER OF DEEDS

FOREST COUNTY WI

PAGES: 1

R-21

I, TIFFANY N. HEISEL, DO HEREBY CERTIFY THAT ON THE 19TH DAY OF JUNE 2025, I FOUND EVIDENCE OF THE SOUTHWEST CORNER OF SECTION 24, T 38 N, R 14 E, FOURTH PRINCIPAL MERIDIAN, AND I RE-ESTABLISHED SAID CORNER ACCORDING TO THE WISCONSIN STATUTES AS SHOWN AND DESCRIBED HEREON.

THIS 25TH DAY OF JUNE, 2025.

Tiffany N. Heisel
TIFFANY N. HEISEL
PROFESSIONAL LAND SURVEYOR

rasSmith

CREATIVITY BEYOND ENGINEERING

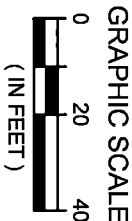
100 West Lawrence Street, Suite 412
Appleton, WI 54911-5754
(920) 731-3499
rasmith.com

WITNESSES TO CORNER LOCATION:

NICHOLAS J. KREPLINE

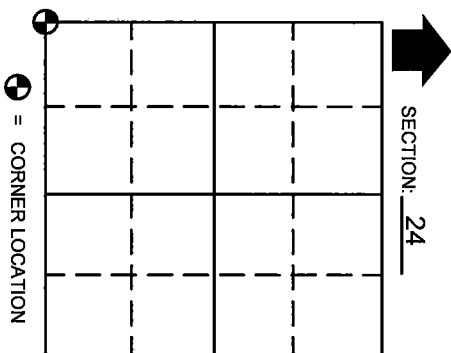
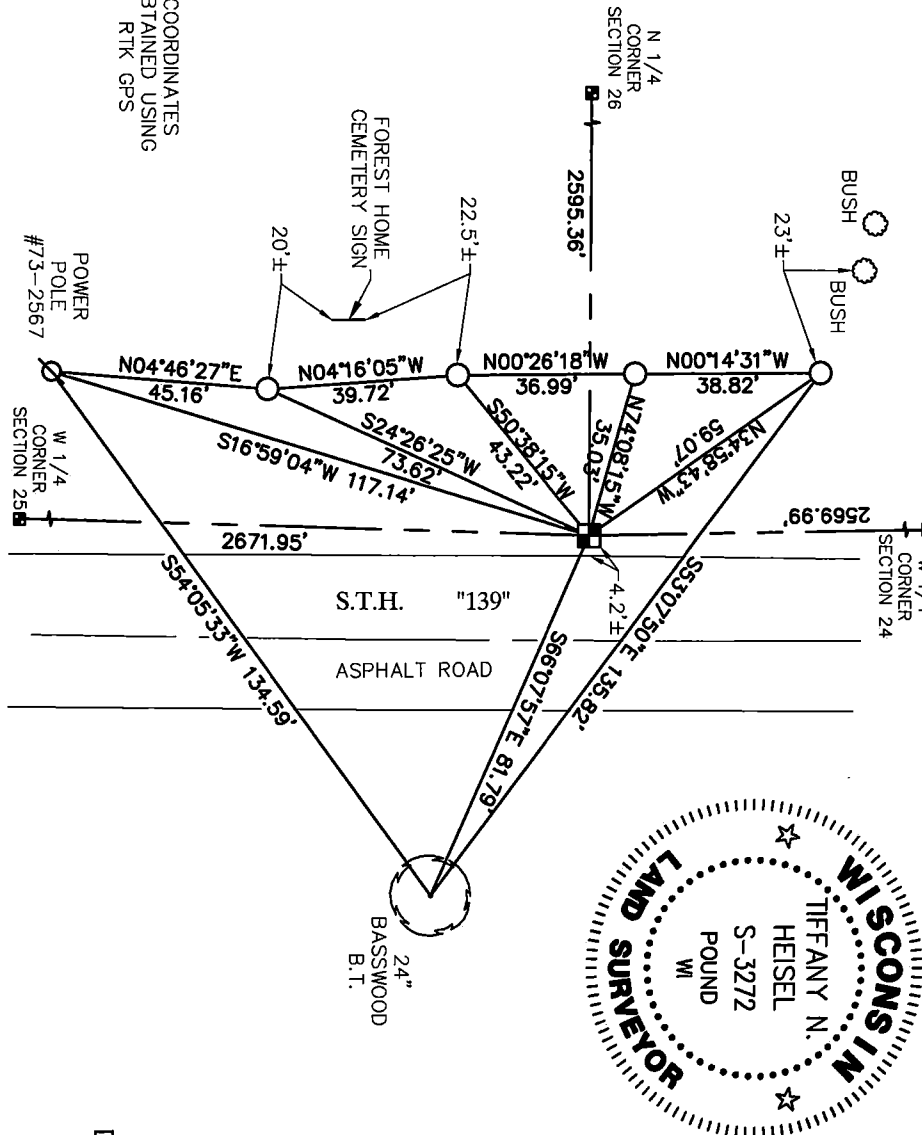
TIFFANY N. HEISEL

- LEGEND
- 1-1/4" X 30" IRON REBAR SET
 - 1" IRON PIPE SET



WISCONSIN COORDINATE REFERENCE SYSTEM FOR FOREST COUNTY		
NAD83 (2011) COORDS.	NORTH (Y)	EAST (X)
	636,882.18	889,060.03

COORDINATES
OBTAINED USING
RTK GPS



TOWN OF: ROSS
COUNTY OF: FOREST
DRAFTED BY: TNH

T 38 N R 14 E
WISCONSIN

Stock No. 26273

Document Number 127902

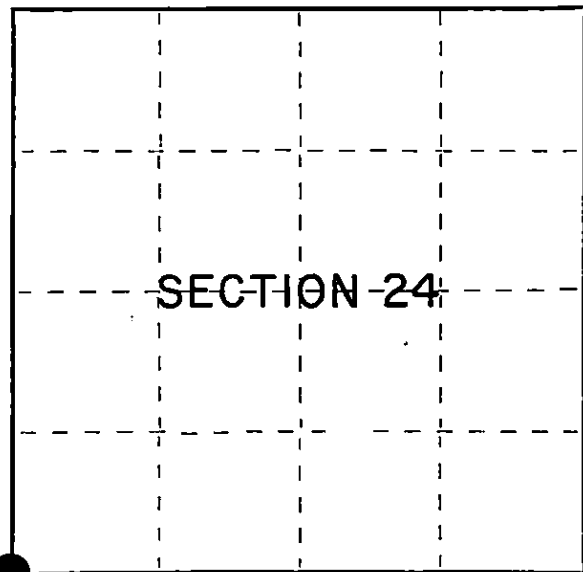
U.S. PUBLIC LAND SURVEY MONUMENT RECORD

Index No. **R-21**

State of Wisconsin }
 County of Forest } ss.

I, William B. Cochrane, do hereby
 certify that on the 19th day
 of September, 1983, I found
 evidence of the Southwest Section
 corner of Section 24
 Township 38, North, Range
14 East, Fourth Principal Meridian,
 as described hereon; and that from this evidence
 I established a new monument and accessories
 as described hereon to perpetuate the original
 location of this corner.

Resident witnesses:

David Brownell

○ = Corner monument restored.

History of original corner establishment:

Original Government Survey in 1865 by H.&J.L. Nowlin. North between Sections 25 and 26,
 80.00 chains, set Section Corner post to Sections 23, 24, 25, and 26, from which the
 following bear:

Linden	12"	N79°E	9 lks.
Birch	12"	N31°W	36 lks.

Description of corner evidence found:

No original corner evidence was recovered.

Corner position falls in Hwy 139, and was restored using the measurements as shown
 on the State Highway Division Job #7115. Plan dated 9/2/47.

Description of monument and accessories I established to perpetuate the original location of this corner.

At the restored corner position, set a 2½" diameter aluminum pipe monument, 3 feet
 long, 30 inches in the ground, with an aluminum cap stamped: T38N R14E, S23, S24, S25
 S26, 1983, S-1107, from which the following new blazed and scribed bearing trees bear:

Basswood	14"	S63°E	83.20 feet
Power Pole #73-2567		S20°W	117.45 feet
Steel Sign Post		West	1.00 feet

Dated at Hiles, Wis., this 26th day of March, 1985

Signature William B. Cochrane Title Land Surveyor Registration No. S-1107
 (County Surveyor, Registered Land Surveyor, or other duly authorized official)

Office of Register of Deeds, County of Forest, I hereby certify that the within
 instrument was filed in this office for record on the 24th day of April, 1985
 at 1:00 o'clock P. M.

Paul Aschenbrenner
 (Register of Deeds)

By _____ Deputy

4381423 0000

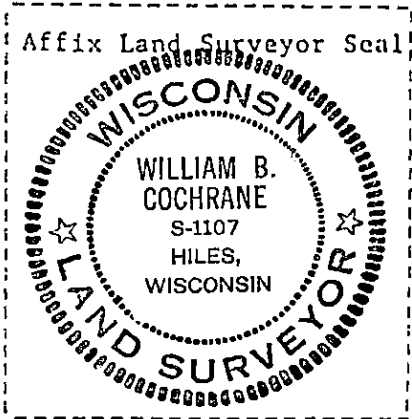
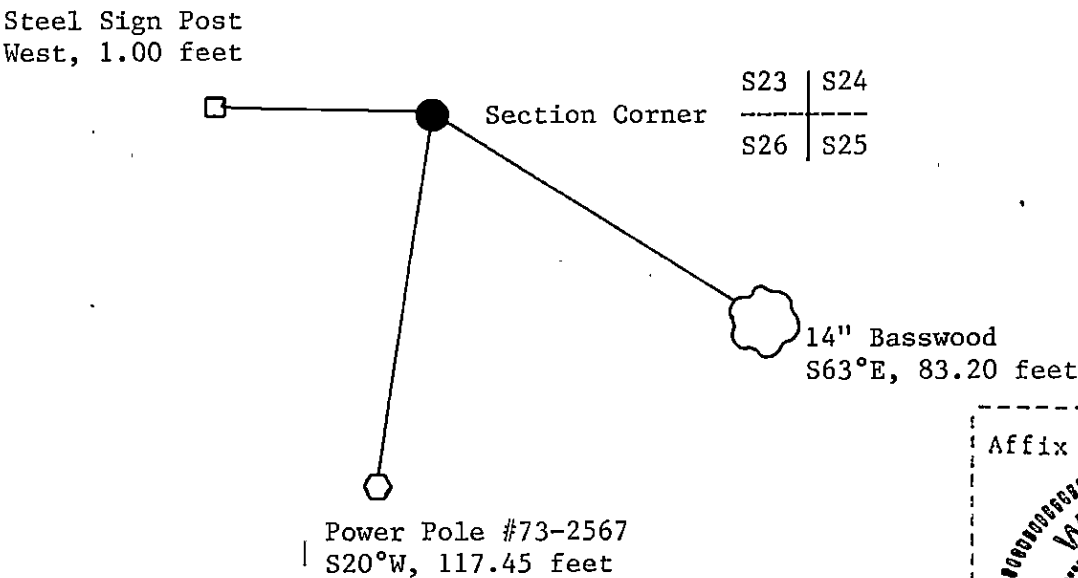
(e) Describe any material discrepancy between the location of the corner as restored or reestablished and the location of that corner as previously restored or reestablished by distance and direction. Show the discrepancy on the plan view drawing under (d), above. Show the distances between the corner as previously restored or reestablished and (1) the corner as restored or reestablished, and (2) to at least 2 of the witness monuments shown on the drawing in (d), above.

See drawing below.

(f) Was the corner restored through acceptance of (1) an obliterated evidence location, or, (2) a found perpetuated location?

Restored from accepted evidence.

(g&h) Was the corner reestablished through lost corner proportionate methods? If so, show the method, including the directions and distances to other public land survey corners used as evidence or used for proportioning in determining the corner location?



(i) I, William B. Cochrane
(type or print name) certify that the corner location shown on this record was determined by me or under my direction and control and that this U.S. Public Land Survey Monument Record is correct and complete to the best of my knowledge and belief.

William B. Cochrane
Signature

March 26, 1985
Date