

U. S. PUBLIC LAND SURVEY MONUMENT RECORD

NOTE: This form is intended and designed to fulfill all requirements of Wisconsin Administrative Code, Chapter A-E 7.08 U.S. Public Land Survey Monument Record (3) (a-i)

A-E 7.08(3)(a) Identity of corner:  
East 1/4 Corner Section 24,  
Township 38 North, Range 14 East  
of the Fourth Principal Meridian,  
Town of Ross, Forest County,  
Wisconsin

WISCRS - FOREST COUNTY  
N: 639,260.547 USft (XXX,XXX.XXX)  
E: 894,146.492 USft (XXX,XXX.XXX)  
Datum: NAD83 (2011)  
GNSS Method RTK  
GNSS Control WISCORS VRS



The coordinate value shown has been verified by the average of two or more GPS observations at a markedly different time. Coordinates shown in parenthesis are previously published values.

A-E 7.08(3)(b)

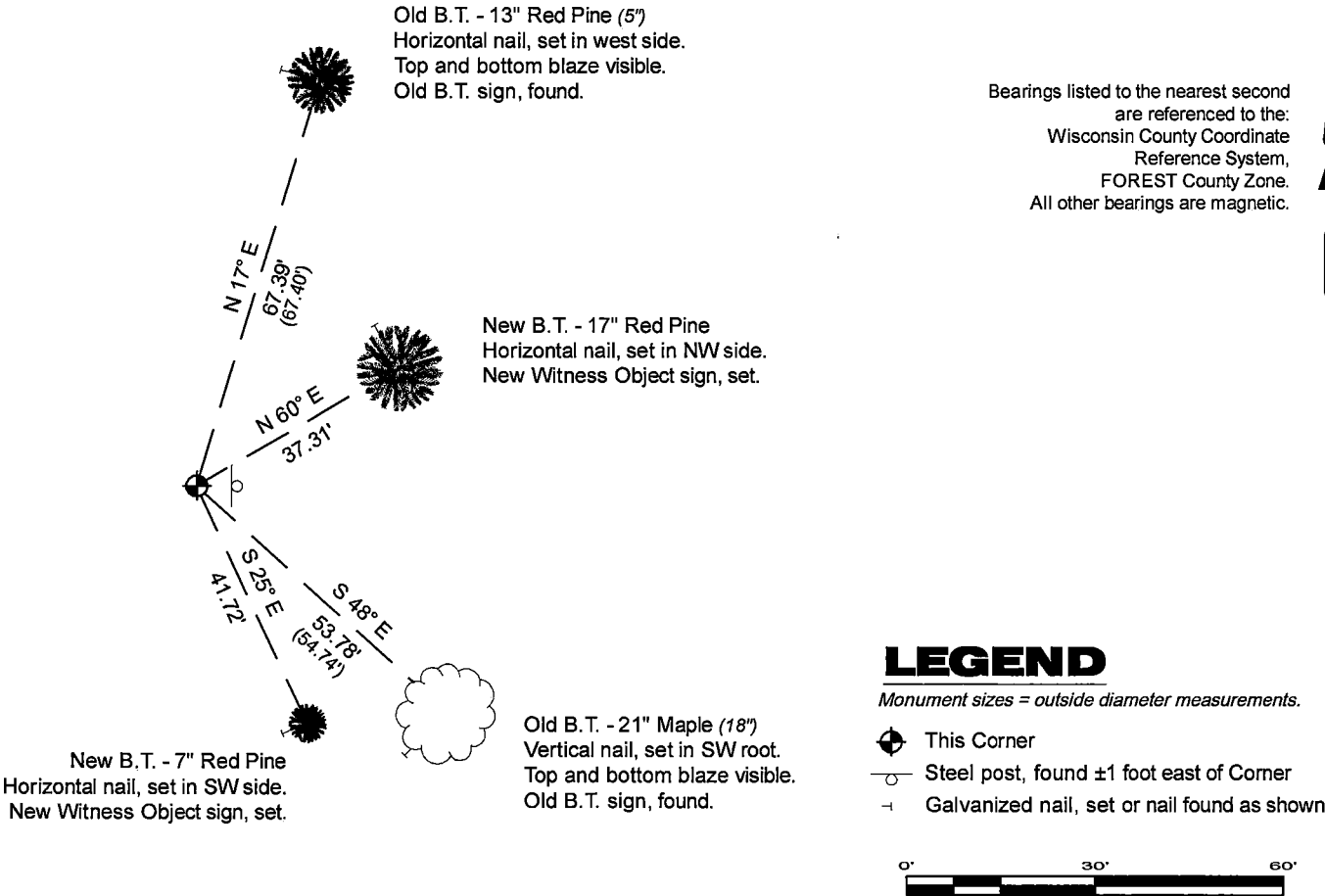
Original Surveyor: Artemas Curtis - October 1857  
Lynn 14 - N 83° W, 42 Links, Yellow Birch 14 - S 77° E, 15 Links,

See previous U.S. Public Land Survey Monument Record - P-25 - March 28, 1985 - Surveyor 1107 - William B. Cochrane - THENCE:

- 1985 - Surveyor 1107 - William B. Cochrane - indicates this position as "2 1/2" diameter aluminum pipe monument" on Forest Co. record Map #381424-19870224.
- April 11, 1987 - Surveyor 1682 - Glen Barker - indicates this position as "2 1/2" aluminum pipe w/ 3-1/4" alloy cap found" on Forest Co. record Map #381424-19870411.
- May 20, 2014 - Surveyor 1783 - Thomas J. McGuire - indicates this position as "found 2 1/2" iron pipe w/ 3-1/4" cap" on Forest Co. record Map #381424-20140520.

November 12, 2024 - In performing the 2024 - Forest County - "PLSS Corner Remonumentation and GPS Services" project, I found a 2.25" diameter aluminum pipe monument with a 3.25" diameter aluminum cap stamped to identify the corner. The monument is highland on a woods line with Popple slash to the west and mixed hardwoods to the east and extends ±6" above grade. I also found 2 of Cochrane's bearing trees alive and in good condition. I established 2 new reference monuments as shown below.

A-E 7.08(3)(c)(d) Plan view of corner with references to at least 4 witness monuments.



A-E 7.08(3)(e) 1857 Surveyor set a post, 1985 Surveyor set a 2 1/2" diameter aluminum pipe monument, with aluminum cap stamped to identify corner, 1987 Surveyor found the same, 2014 Surveyor found a 2 1/2" iron pipe with 3 1/4" cap. I found a 2.25" diameter aluminum pipe monument with a 3.25" diameter aluminum cap stamped to identify the corner in 2024.  
A-E 7.08(3)(f) I accept this monument in good faith as a FOUND PERPETUATED LOCATION of the corner.  
A-E 7.08(3)(g)(h) This corner was not determined through lost-corner-proportionate methods.

A-E 7.08(3)(i) I, Jeffrey L. DeMuth, Professional Land Surveyor No. S-2656, hereby certify that the corner location on this record was determined by me or under my direction and control, and that this U.S. Public Land Survey Monument Record is correct and complete to the best of my knowledge, and belief.

SIGNATURE

November 25, 2024

DATE



43814242000

Stock No. 26273

Document Number 127901

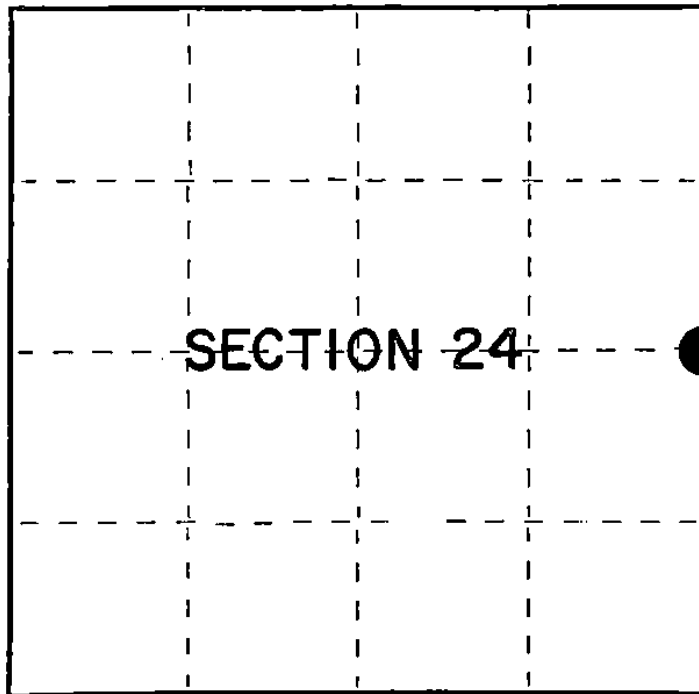
## U.S. PUBLIC LAND SURVEY MONUMENT RECORD

Index No. P-25

State of Wisconsin } ss.  
County of Forest

I, William B. Cochran, do hereby  
 certify that on the 6th day  
 of September, 1983, I found  
 evidence of the East Quarter  
 corner of Section 24  
Township 38, North, Range  
14 East, Fourth Principal Meridian,  
 as described hereon; and that from this evidence  
 I established a new monument and accessories  
 as described hereon to perpetuate the original  
 location of this corner.

Resident witnesses:

Tony Tillman

○ = Corner monument restored.

History of original corner establishment:

Original Government Survey in 1857 by Artemas Curtis. North between Sections 19 and 24, 40.00 chains, set Quarter Corner post to Sections 19 and 24, from which the following bear:

Lynn	14"	N83°W	42 lks.
Y. Birch	14"	S77°E	15 lks.

Description of corner evidence found:

Fence post hole from which fence lines bear North, South, and West.

I accept the fence corner as the best available evidence for restoring the corner position.

No original corner evidence was recovered.

Description of monument and accessories I established to perpetuate the original location of this corner.

At fence corner, set a 2½" diameter aluminum pipe monument, 3 feet long, 30 inches, in the ground, with an aluminum cap stamped: T38N, R14E, R15E, S19, S24, 1983, S-1107. From which the following new blazed and scribed bearing trees bear:

R. Pine	5"	N17°E	67.40 feet
Maple	18"	S48°E	54.74 feet
Steel Sign Post		North	1.00 feet

Dated at: Hiles, Wis., this 28th day of March, 1985

Signature William B. Cochran Title Land Surveyor Registration No. S-1107  
 (County Surveyor, Registered Land Surveyor, or other duly authorized official)

Office of Register of Deeds, County of Forest, I hereby certify that the within  
 instrument was filed in this office for record on the 24th day of April, 1985  
 at 1:00 o'clock P. M.

Paul Aschenbrenner  
 (Register of Deeds)

By \_\_\_\_\_ Deputy

43814242000

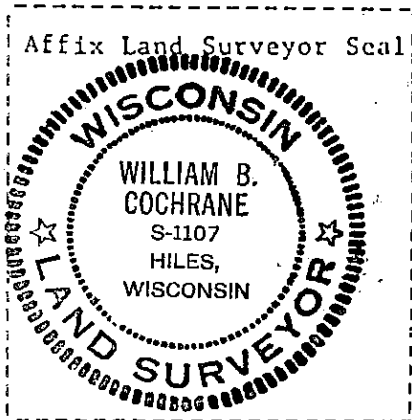
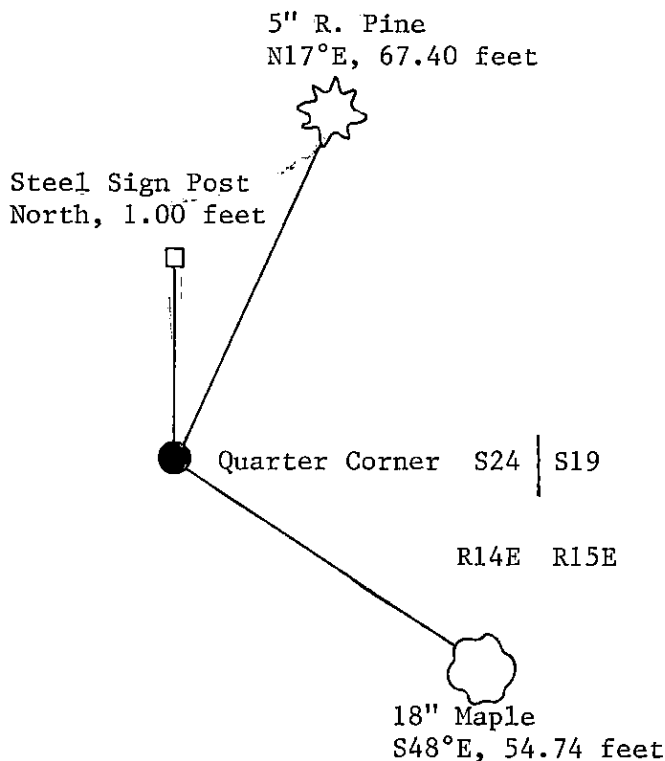
(e) Describe any material discrepancy between the location of the corner as restored or reestablished and the location of that corner as previously restored or reestablished by distance and direction. Show the discrepancy on the plan view drawing under (d), above. Show the distances between the corner as previously restored or reestablished and (1) the corner as restored or reestablished, and (2) to at least 2 of the witness monuments shown on the drawing in (d), above.

See drawing below.

(f) Was the corner restored through acceptance of (1) an obliterated evidence location, or, (2) a found perpetuated location?

Restored from accepted evidence.

(g&h) Was the corner reestablished through lost corner proportionate methods? If so, show the method, including the directions and distances to other public land survey corners used as evidence or used for proportioning in determining the corner location?



(i) I, William B. Cochrane  
(type or print name) certify that the corner location shown on this record was determined by me or under my direction and control and that this U.S. Public Land Survey Monument Record is correct and complete to the best of my knowledge and belief.

William B. Cochrane March 28, 1985  
Signature Date