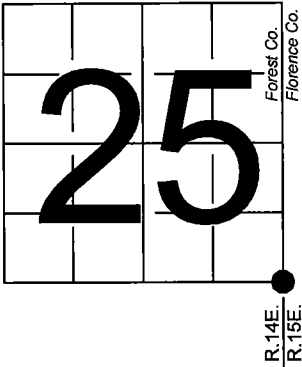


U. S. PUBLIC LAND SURVEY MONUMENT RECORD

NOTE: This form is intended and designed to fulfill all requirements of Wisconsin Administrative Code, Chapter A-E 7.08 U.S. Public Land Survey Monument Record (3) (a-i)

A-E 7.08(3)(a) Identity of corner:
Southeast Corner Section 25,
Township 38 North, Range 14 East
of the Fourth Principal Meridian,
Town of Ross, Forest County,
Wisconsin

WISCRS - FOREST COUNTY
N: 631,402.628 USft (XXX,XXX.XXX)
E: 894,181.602 USft (XXX,XXX.XXX)
Datum: NAD83 (2011)
GNSS Method RTK
GNSS Control WISCRS VRS



The coordinate value shown has been verified by the average of two or more GPS observations at a markedly different time. Coordinates shown in parenthesis are previously published values.

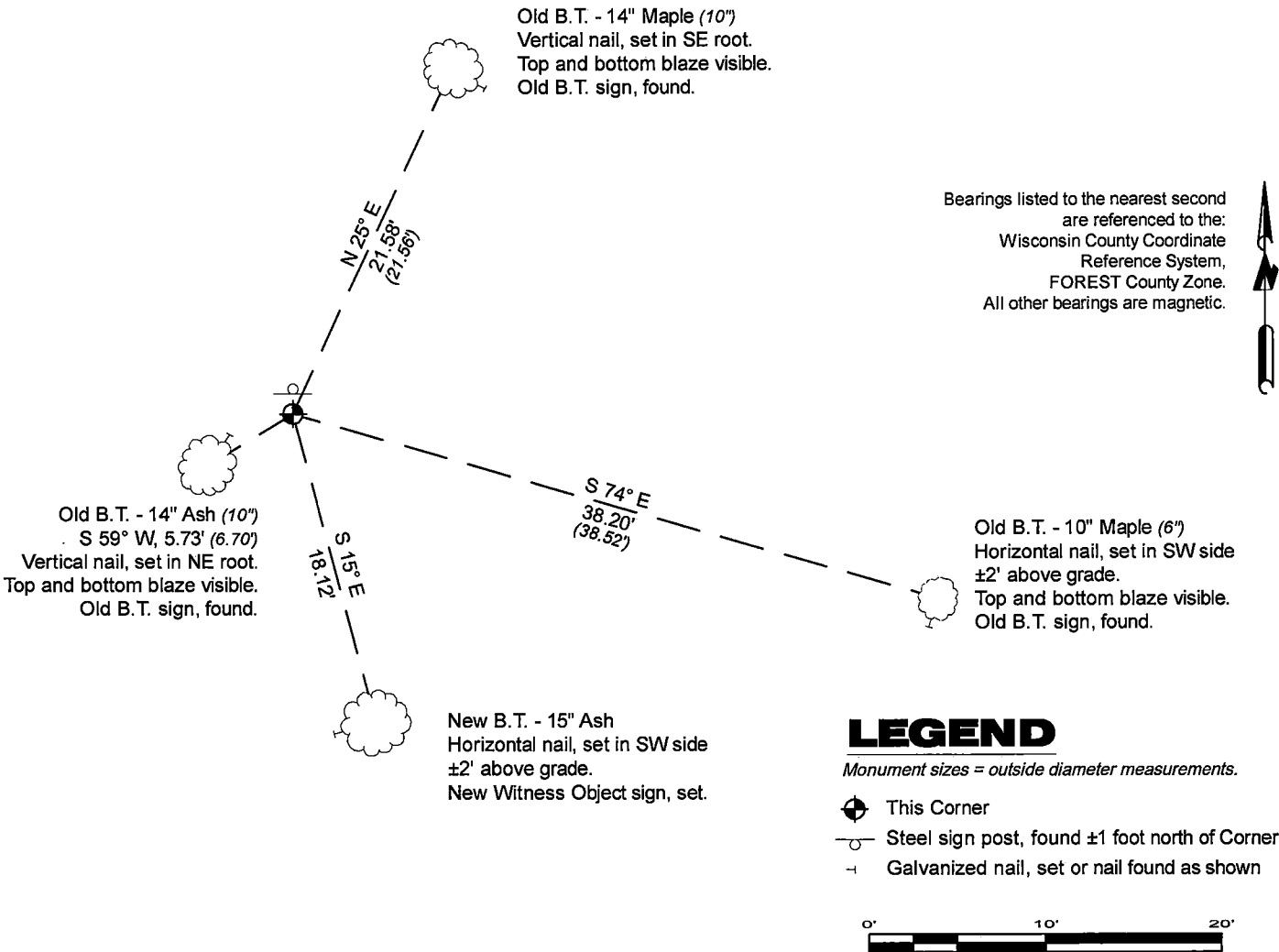
A-E 7.08(3)(b)

Original Surveyor: Artemas Curtis - September 1857 to October 1857
Sugar 14 - S 20° W, 21 Links, Sugar 12 - N 60° W, 30 Links,
Sugar 7- N 41° E, 37 Links, Sugar 8 - S 32° E, 29 Links

See previous U.S. Public Land Survey Monument Record - V-25 - April 2, 1985 - Surveyor 1107 - William B. Cochrane - THENCE:

April 24, 2024 - In performing the 2024 - Forest County - "PLSS Corner Remonumentation and GPS Services" project, I found a 2.25" diameter aluminum pipe monument with a 3.25" diameter aluminum cap stamped to identify the corner. The monument is highland ±140' north of Jauquet Road, and extends ±12" above grade. I also found 3 of Cochrane's bearing trees alive and in good condition. I established 1 new reference monuments as shown below.

A-E 7.08(3)(c)(d) Plan view of corner with references to at least 4 witness monuments.



A-E 7.08(3)(e) 1857 Surveyor set a post, 1985 Surveyor set a 2 1/2" diameter aluminum pipe monument, with aluminum cap stamped to identify corner. In 2024, I found a 2.25" diameter aluminum pipe monument with a 3.25" diameter aluminum cap stamped to identify the corner.

A-E 7.08(3)(f) I accept this monument in good faith as a FOUND PERPETUATED LOCATION of the corner.

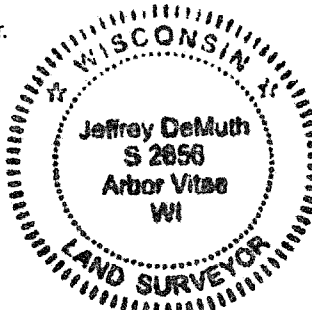
A-E 7.08(3)(g)(h) This corner was not determined through lost-corner-proportionate methods.

A-E 7.08(3)(i) I, Jeffrey L. DeMuth, Professional Land Surveyor No. S-2656, hereby certify that the corner location on this record was determined by me or under my direction and control, and that this U.S. Public Land Survey Monument Record is correct and complete to the best of my knowledge, and belief.

SIGNATURE

April 29, 2024

DATE



43814250000

43814250000

V25

Stock No. 26273

Document Number 127909

U.S. PUBLIC LAND SURVEY MONUMENT RECORD

Index No. V-25

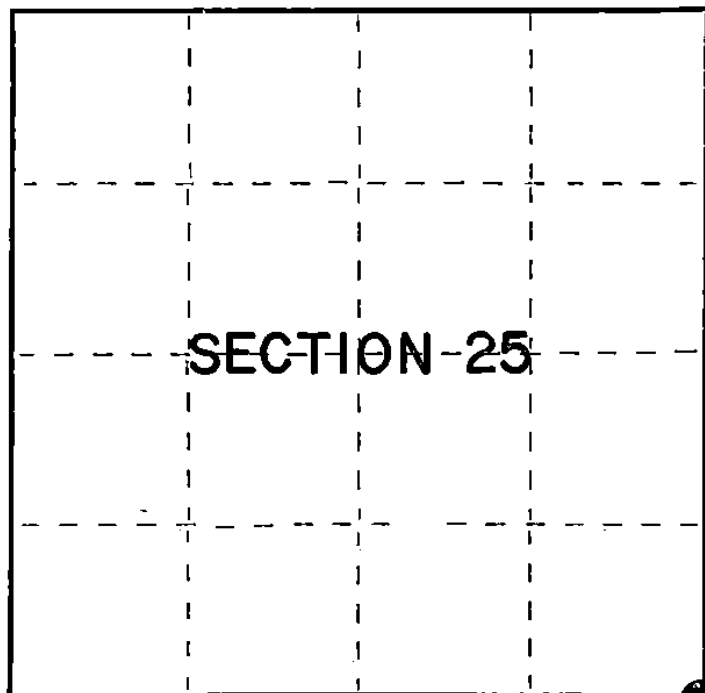
State of Wisconsin }
County of Forest } ss.

I, William B. Cochran, do hereby
certify that on the 15th day
of August, 1983, I found
evidence of the Southeast Section
corner of Section 25
Township 38, North, Range
14 East, Fourth Principal Meridian,
as described hereon; and that from this evidence
I established a new monument and accessories
as described hereon to perpetuate the original
location of this corner.

Resident witnesses:

David Brownell

Tony Tillman



○ = Corner monument restored.

History of original corner establishment:

Original Government Survey in 1857 by Artemas Curtis. North between Sections 31 and 36,
80.00 chains, set Section Corner post to Sections 25, 30, 31, and 36, from which the
following bear:

Sugar	14"	S20°W	21 lks.
Sugar	12"	N60°W	30 lks.
Sugar	7"	N41°E	37 lks.
Sugar	8"	S32°E	29 lks.

Description of corner evidence found:

2" diameter iron pipe.

I accept the 2" diameter iron pipe as the best available evidence for restoring
the corner position.

No original corner evidence was recovered.

Description of monument and accessories I established to perpetuate the original location of this corner.

In place of 2" diameter iron pipe, set a 2½" diameter aluminum pipe monument, 3 feet
long, 30 inches in the ground, with an aluminum cap stamped: T38N, R14E, R15E, S25,
S30, S31, S36, 1983, S-1107. From which the following blazed and scribed new bearing
trees bear:

Maple	10"	N25°E	21.56 feet
Maple	6"	S74°E	38.52 feet
W. Ash	10"	S59°W	6.70 feet
Steel Sign Post		North	1.00 feet

Dated at Hiles, Wis., this 2nd day of April, 1985

Signature William B. Cochran Title Land Surveyor Registration No. S-1107
(County Surveyor, Registered Land Surveyor, or other duly authorized official)

Office of Register of Deeds, County of Forest, I hereby certify that the within
instrument was filed in this office for record on the 24th day of April, 1985
at 1:00 o'clock P. M.

Paul Aschenbrenner
(Register of Deeds)

By Deputy

43814250000

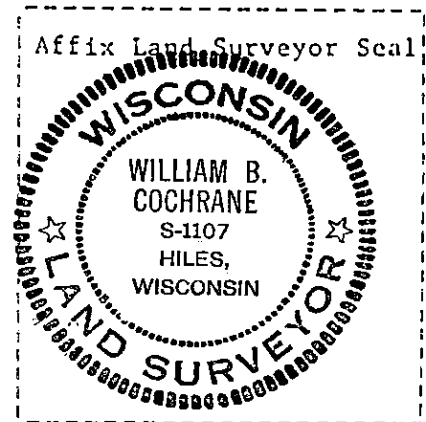
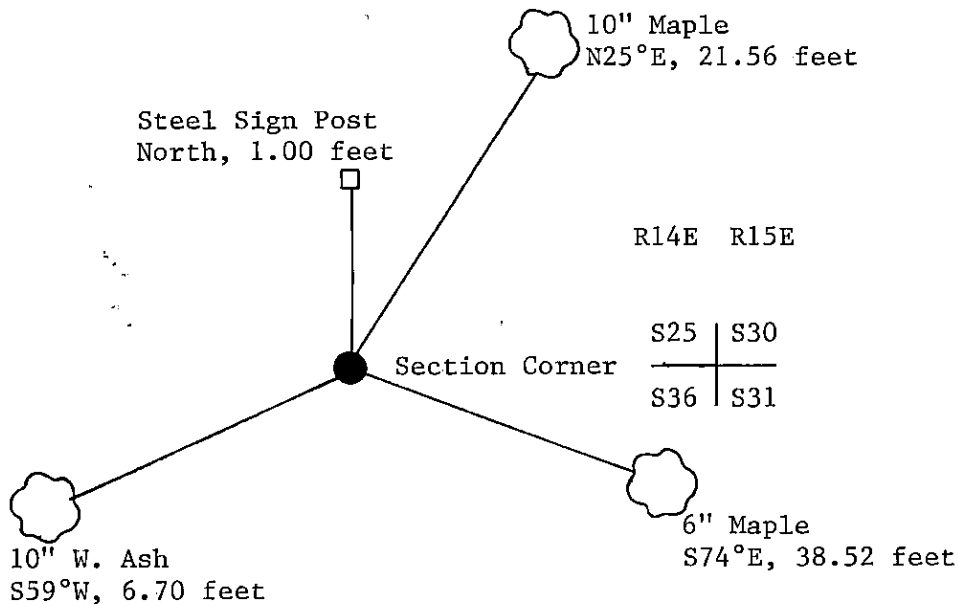
(e) Describe any material discrepancy between the location of the corner as restored or reestablished and the location of that corner as previously restored or reestablished by distance and direction. Show the discrepancy on the plan view drawing under (d), above. Show the distances between the corner as previously restored or reestablished and (1) the corner as restored or reestablished, and (2) to at least 2 of the witness monuments shown on the drawing in (d), above.

See drawing below.

(f) Was the corner restored through acceptance of (1) an obliterated evidence location, or, (2) a found perpetuated location?

Restored from accepted evidence.

(g&h) Was the corner reestablished through lost corner proportionate methods? If so, show the method, including the directions and distances to other public land survey corners used as evidence or used for proportioning in determining the corner location?



(i) I, William B. Cochrane
(type or print name) certify that the corner location shown on this record was determined by me or under my direction and control and that this U.S. Public Land Survey Monument Record is correct and complete to the best of my knowledge and belief.

William B. Cochrane April 2, 1985
Signature Date