

U.S. PUBLIC LAND SURVEY MONUMENT RECORD

HISTORY OF ORIGINAL CORNER ESTABLISHMENT:

1.) 1865 - SEPT. 9TH, J.L. NOWLIN, ORIGINAL GOVERNMENT SURVEY. BEARING TREES: 9" SUGAR, N 15° W, 23 LINKS AND 18" SUGAR N 22° E 22 LINKS.  
2.) 1983 - DEC. 12TH, N. HARRISON FOUND NO EVIDENCE OF THE ORIGINAL CORNER. FIELD NOTES OF N.H. SMITH VIEWED AT THE OFFICE OF PAUL SMITH, ATHELSTANE, WIS. AND HIGHWAY PLANS FOR "139", PROJ. S0709 (1). WIS DOT, RHINELANDER WIS., AND OLD FENCE LINE FROM WEST WERE USED TO DETERMINE THE CORNER LOCATION. HE SET THE CORNER AT A DISTANCE IN SMITH NOTES FROM NORTH QUARTER AND ON OLD FENCE LINE FROM WEST. CORNER IS SET 18.6' FROM CENTERLINE OF HWY "139". DISTANCE GIVEN ON HIGHWAY PLANS FROM CENTER LINE IS ±17'. HE SET A FOREST COUNTY ALUM. MON. IN THE SHOULDER OF THE ROAD 0.5' BELOW GROUND SURFACE. BEARING TREES AS FOLLOWS: 9" MAPLE N68°18'E, 70.1', 9" MAPLE S73°50'E, 66.4', 16" MAPLE S68°22'W, 32.5', 18" CULVERT N6°27'W, 77.2'

DESCRIPTION OF CORNER EVIDENCE FOUND:

ON JUNE 18, 2025 RASMITH FOUND THE ALUMINUM MONUMENT SECTION CORNER ALONG WITH 2 ALUM. WITNESS MONUMENTS. TWO ADDITIONAL WITNESSES WERE SET AND TIED AS SHOWN.

THIS 25TH DAY OF JUNE, 2025.  
*Tiffany N. Heisel*  
TIFFANY N. HEISEL  
PROFESSIONAL LAND SURVEYOR

**rasSmith**  
100 West Lawrence Street, Suite 412  
Appleton, WI 54911-5754  
(920) 731-3499  
rasmith.com

WITNESSES TO CORNER LOCATION:

NICHOLAS J. KREPLINE

TIFFANY N. HEISEL

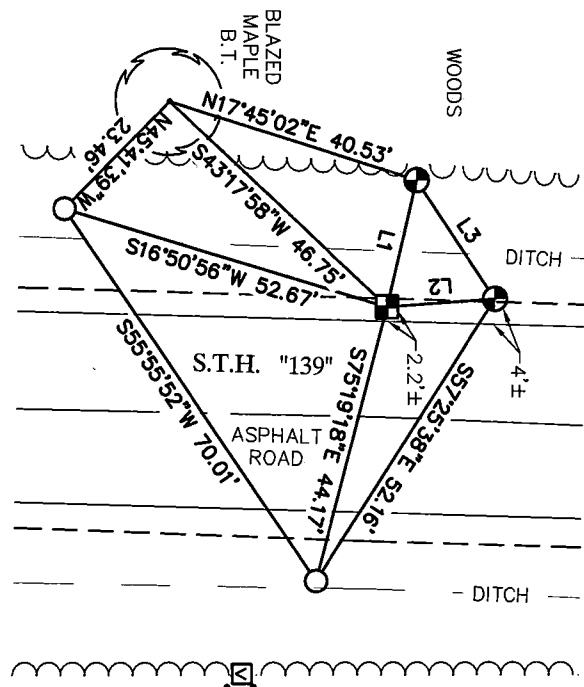
LEGEND

- 2.5" FOREST COUNTY ALUM MON FOUND
- ALUM WITNESS MONUMENT FOUND
- 1" IRON PIPE SET
- COMMUNICATION VAULT

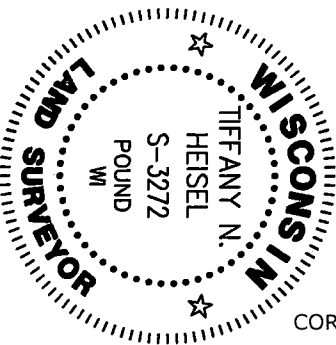


Line Table		
Line #	Direction	Length
L1	N76°55'42"W	20.23
L2	N04°10'06"W	16.94
L3	N56°18'31"E	22.20

NOTE: MONUMENTS IN GRAVEL SHOULDER ARE APPROX. 1' BELOW GRADE



NATIONAL FOREST SIGN  
WOODS



246178

FILED ON:

07/17/2025 02:00 PM

CORTNEY BRITTEN CLEERMAN  
REGISTER OF DEEDS

FOREST COUNTY WI

PAGES: 1

NO. 4 38 14 26 00 00  
V-21

V-21

246178

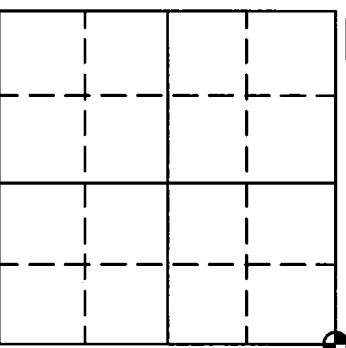
WISCONSIN COORDINATE REFERENCE SYSTEM FOR FOREST COUNTY

NAD83 (2011) COORDS.	NORTH (Y)	EAST (X)
	631,554.87	888,924.15

COORDINATES  
OBTAINED  
USING RTK  
GPS

S:\5169807\dwg\5169807\_PLSS-Forest County.dwg \ 3814141

TOWN OF: ROSS  
COUNTY OF: FOREST  
DRAFTED BY: TNH



43814260000

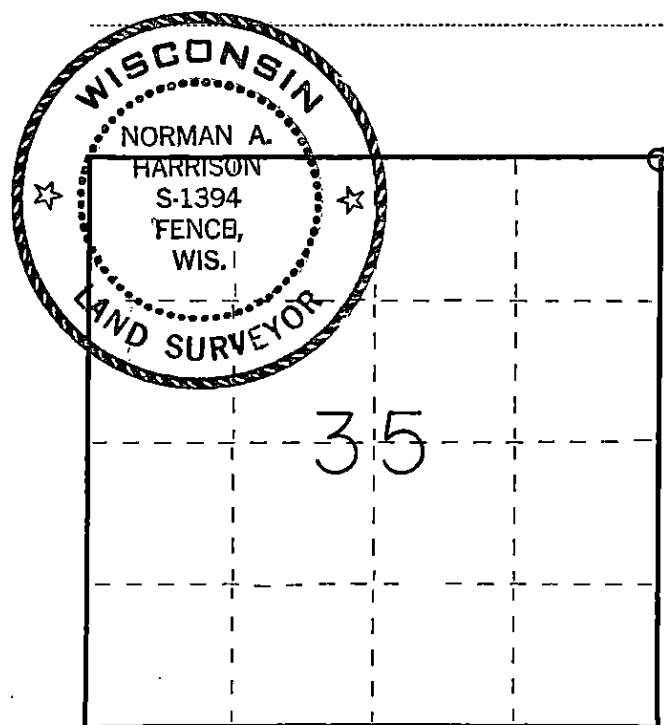
Stock No. 26272

FORM 983  
H.C. Miller Company  
Superior, Wisconsin

State of Wisconsin }  
County of Forest } ss.

I, Norman A. Harrison, do hereby  
certify that on the 12 th day  
of December, 1983, I found  
evidence of the Northeast  
corner of Section 35  
Township 38, North, Range  
14 East, Fourth Principal Meridian,  
as described hereon; and that from this evidence  
I established a new monument and accessories  
as described hereon to perpetuate the original  
location of this corner.

Resident witnesses:



○ = Corner monument restored.

# CERTIFIED LAND CORNER RESTORATION

U.S. Public Land Corner  
History of original corner establishment: Township 37 North, Range 14 East subdivided by:  
James L. Nowlin, Deputy Surveyor  
Commenced Aug. 30, 1865  
Completed Sept, 9, 1865

## Original bearing trees

Sugar	9"	N 15 W	23 lks
Sugar	18"	N 22 E	22 lks

Description of corner evidence found: No evidence of original corner found.  
Field notes of N.H. Smith viewed at the office of Paul Smith, Athelstane, Wis.  
Highway plans for "139", Project no. S 0709 (1). Wis. Dept. of Transportation,  
Rhineland, Wis.  
Old fence line from west

Description of monument and accessories I established to perpetuate the original location of this corner.

Corner set at distance from North quarter found in N. H. Smith's field notes and  
on old fence line from west.

Corner as set is 18.6' from center line of Highway "139". Distance given on Highway plans  
from center line to corner is 17' ±

Set Forest County aluminum monument at corner in shoulder of road 0.5' below  
ground surface.

Bearing trees and objects, magnetic bearings. Corner set April 25, 1983

Maple	east of road	9"	N 68° 18' E	70.1'
Maple	east of road	9"	S 73° 50' E	66.4'
Maple		16"	S 58° 22' W	32.5'
Culvert, C.M.P.	center and top	18"	N 5° 27' W	77.20'

Dated at Fence, Wis., this 5<sup>th</sup> day of May, 1983.

Signature Norman A. Harrison Title Surveyor Registration No. 1394  
(County Surveyor, Registered Land Surveyor, or other duly authorized official)

Office of Register of Deeds, County of Forest. I hereby certify that the within  
instrument was filed in this office for record on the 5<sup>th</sup> day of May, 1983  
at 4:30 o'clock P. M.

Eugene Stangor  
(Register of Deeds)

By \_\_\_\_\_ Deputy

DOCUMENT NO. **123317**

43814210000

U.S. PUBLIC LAND SURVEY MONUMENT RECORD

Index No. V-21

State of Wisconsin }  
County of Forest } ss.

I, William B. Cochrane, do hereby  
certify that on the 26th day  
of September, 1983, I found  
evidence of the Northwest Section  
corner of Section 36  
Township 38, North, Range  
14 East, Fourth Principal Meridian,  
as described hereon; and that from this evidence  
I established a new monument and accessories  
as described hereon to perpetuate the original  
location of this corner.

Resident witnesses:

David Brownell

Tony Tillman

History of original corner establishment:

Original Government Survey in 1865 by H. & J. L. Nowlin. North between Sections 35 and 36,  
80.00 chains, set Section Corner post, to Sections 25, 26, 35, and 36, from which the  
following bear:

Sugar	9"	N15°W	23 lks.
Sugar	18"	N22°E	22 lks.

Description of corner evidence found:

No original corner evidence was recovered.

Corner position falls in Hwy 139, and was restored using the measurements as shown on the  
State Highway Division Job #7115. Plan dated 9/2/47.

Forest County Monument bears, N03°39'13"W, 16.83 feet

Description of monument and accessories I established to perpetuate the original location of this corner.  
At the restored corner position, set a 2½" diameter aluminum pipe monument, 3 feet long,  
3½ feet in the ground, with an aluminum cap stamped: T38N R14E, S25, S26, S35, S36,  
1983, S-1107. From which the following new blazed and scribed bearing trees bear:

Maple	13"	N54°E	87.37 feet
Maple	8"	S65°E	68.42 feet
Maple	8"	S46°W	47.14 feet
Reference Monument		N74°W	20.21 feet

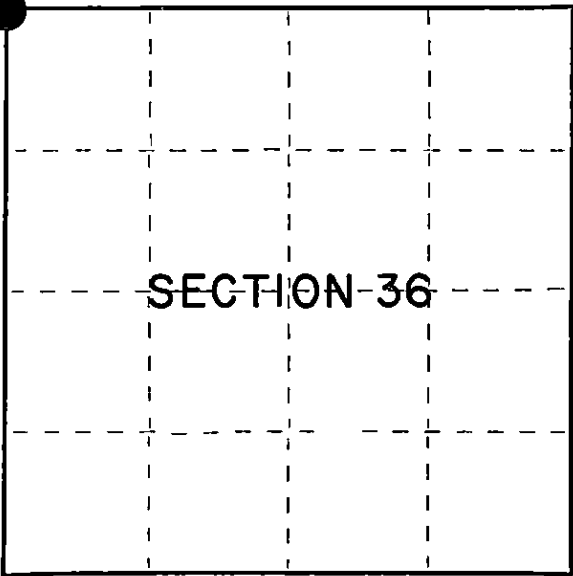
Dated at Hiles, Wis., this 26th day of March, 1985

Signature William B. Cochrane Title Land Surveyor Registration No. S-1107  
(County Surveyor, Registered Land Surveyor, or other duly authorized official)

Office of Register of Deeds, County of Forest, I hereby certify that the within  
instrument was filed in this office for record on the 24th day of April, 1985  
at 1:00 o'clock P. M.

Paul Aschenbrenner  
(Register of Deeds)

By \_\_\_\_\_ Deputy



○ = Corner monument restored.

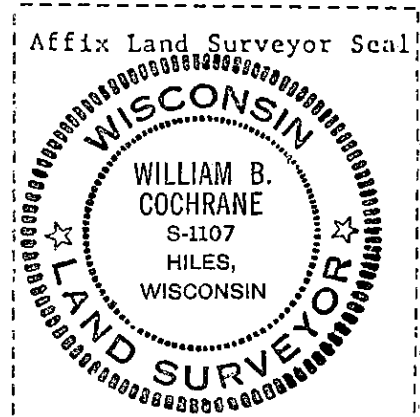
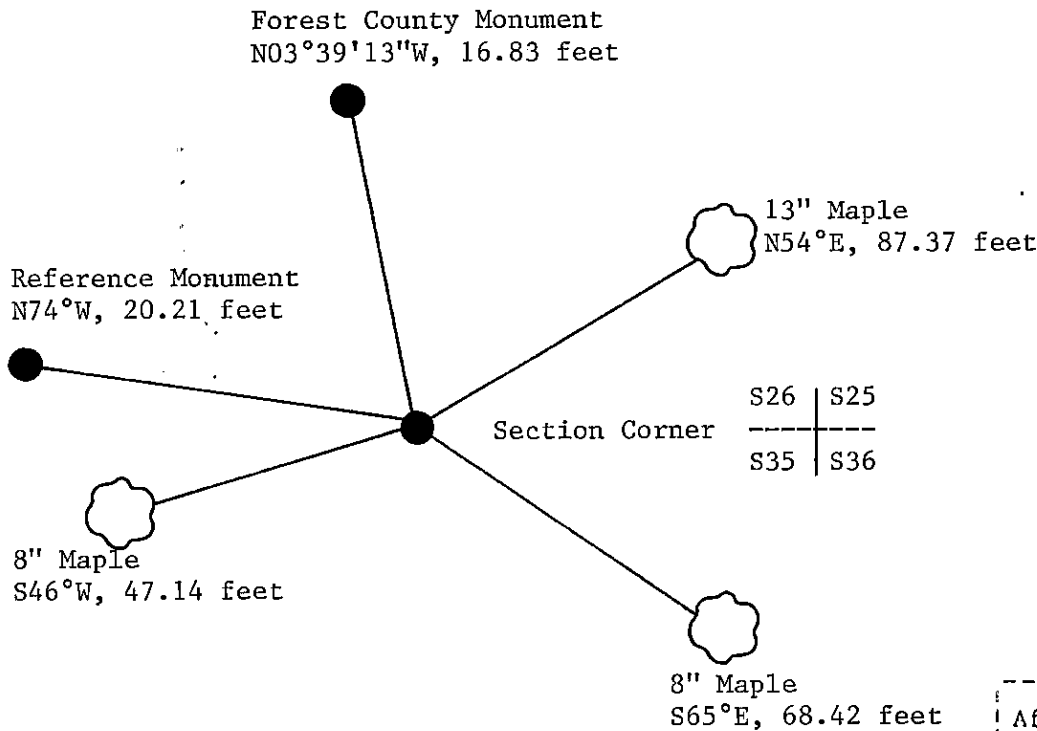
(e) Describe any material discrepancy between the location of the corner as restored or reestablished and the location of that corner as previously restored or reestablished by distance and direction. Show the discrepancy on the plan view drawing under (d), above. Show the distances between the corner as previously restored or reestablished and (1) the corner as restored or reestablished, and (2) to at least 2 of the witness monuments shown on the drawing in (d), above.

See drawing below.

(f) Was the corner restored through acceptance of (1) an obliterated evidence location, or, (2) a found perpetuated location?

Restored from accepted evidence.

(g&h) Was the corner reestablished through lost corner proportionate methods? If so, show the method, including the directions and distances to other public land survey corners used as evidence or used for proportioning in determining the corner location?



(i) I, William B. Cochrane  
(type or print name) certify that the corner location shown on this record was determined by me or under my direction and control and that this U.S. Public Land Survey Monument Record is correct and complete to the best of my knowledge and belief.

William B. Cochrane  
Signature

March 26, 1985  
Date