

U.S. PUBLIC LAND SURVEY MONUMENT RECORD

NO. 438 14 26 20 00
T-21

HISTORY OF ORIGINAL CORNER ESTABLISHMENT:

1.) 1865 - H.&J.L. NOWLIN, ORIGINAL GOVERNMENT SURVEY. NORTH BETWEEN SECTIONS 25 AND 26, 40.00 CHAINS, SET SECTION CORNER POST TO SECTIONS 25 AND 26, FROM WHICH THE FOLLOWING BEAR: 20" SUGAR, S 86° W, 21 LINKS AND 12" SUGAR S 51° E 20 LINKS.
2.) 1983 - SEPT. 19TH, W. COCHRANE FOUND NO EVIDENCE OF THE ORIGINAL CORNER. CORNER POSITION FALLS IN HWY 139 AND WAS RESTORED USING THE MEASUREMENTS AS SHOWN ON THE STATE HIGHWAY DIVISION JOB #7115. PLAN DATED 9/2/47. HE SET A 2.5" DIA. ALUM. PIPE MON. 3' LONG, 30" IN THE GROUND, WITH AN ALUMINUM CAP STAMPED: T38N, R14E, S25, S26, 1983, S-1107, WITH THE FOLLOWING TIES: 20" MAPLE N63°E 129.82' AND POWER POLE #73-2574 N32°W 34.45'.

DESCRIPTION OF CORNER EVIDENCE FOUND:

ON JUNE 18, 2025 RASMITH FOUND THE ALUMINUM MONUMENT SECTION CORNER AND THE POWER POLE TIE. FOUR ADDITIONAL IRON PIPE WITNESSES WERE SET AND TIED AS SHOWN.

246176

FILED ON:

07/17/2025 02:00 PM

CORTNEY BRITTEN CLEERMAN
REGISTER OF DEEDS

FOREST COUNTY WI

PAGES: 1

T-21

I, TIFFANY N. HEISEL, DO HEREBY CERTIFY THAT ON THE 18TH DAY OF JUNE 2025, I FOUND EVIDENCE OF THE WEST QUARTER CORNER OF SECTION 25, T 38 N, R 14 E, FOURTH PRINCIPAL MERIDIAN, AND I RE-ESTABLISHED SAID CORNER ACCORDING TO THE WISCONSIN STATUTES AS SHOWN AND DESCRIBED HEREON.

THIS 25TH DAY OF JUNE, 2025.

Tiffany N. Heisel
TIFFANY N. HEISEL
PROFESSIONAL LAND SURVEYOR

rasSmith

CREATIVITY BEYOND ENGINEERING

100 West Lawrence Street, Suite 412
Appleton, WI 54911-5754
(920) 731-3499
rasmith.com

WITNESSES TO CORNER LOCATION:

NICHOLAS J. KREPLINE

TIFFANY N. HEISEL

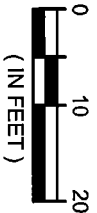
LEGEND

2.5" FOREST COUNTY ALUM MON FOUND

1" IRON PIPE SET



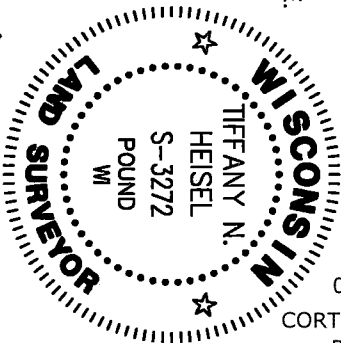
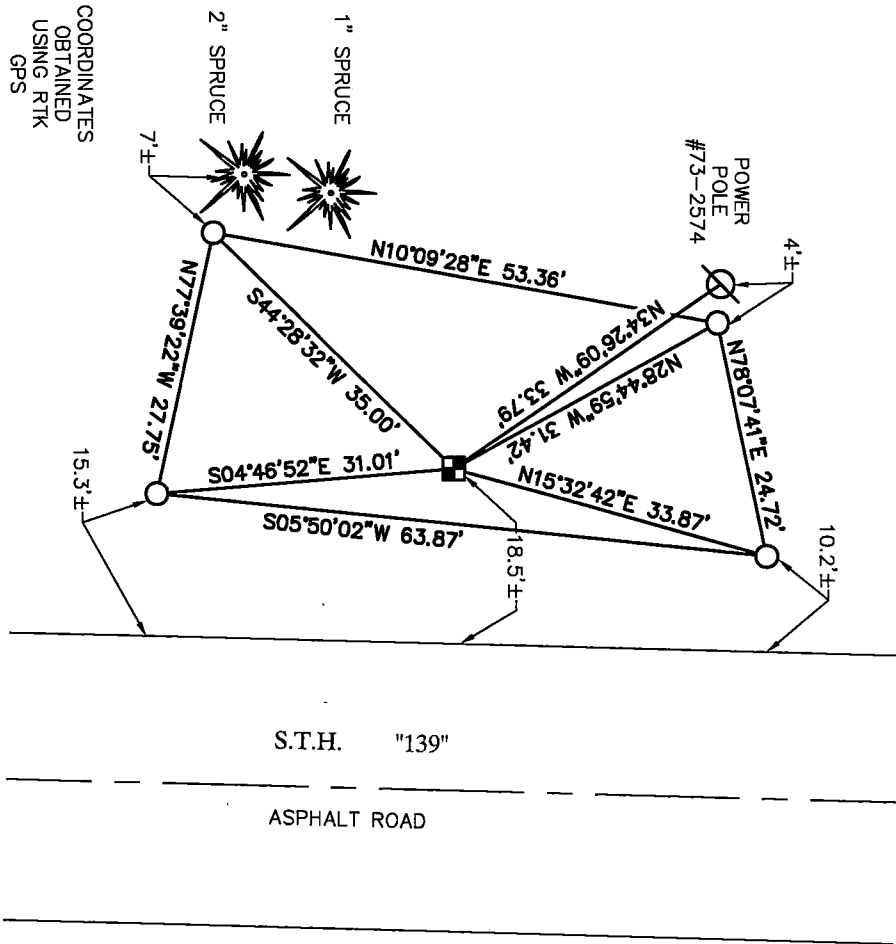
GRAPHIC SCALE



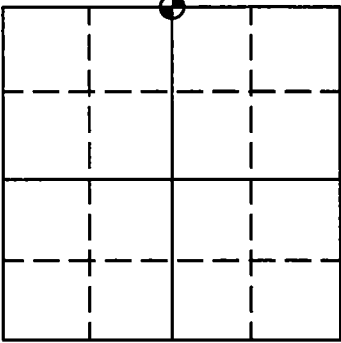
WISCONSIN COORDINATE REFERENCE SYSTEM FOR FOREST COUNTY

| NAD83 (2011) COORDS. | NORTH (Y) | EAST (X) |
|----------------------|------------|------------|
| | 634,211.50 | 888,979.12 |

COORDINATES
OBTAINED
USING RTK
GPS



SECTION: 25



☐ = CORNER LOCATION

T 38 N R 14 E

WISCONSIN

TOWN OF: ROSS

COUNTY OF: FOREST

DRAFTED BY: TNH

43814262000

U.S. PUBLIC LAND SURVEY MONUMENT RECORD

Index No. **T-21**

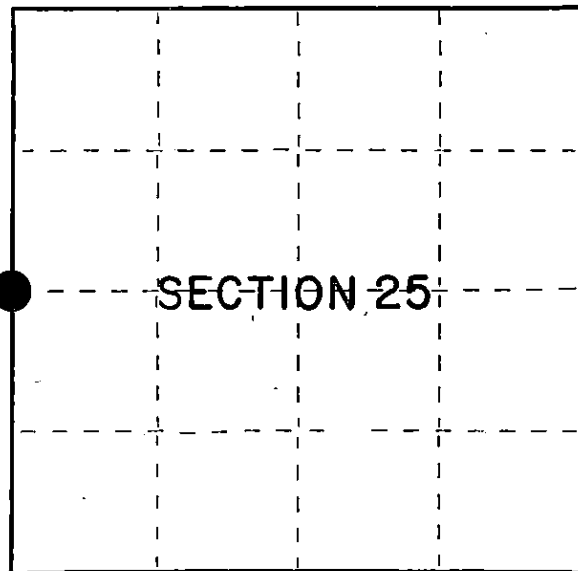
State of Wisconsin }
County of Forest } ss.

I, William B. Cochrane, do hereby
certify that on the 19th day
of September, 1983, I found
evidence of the West Quarter
corner of Section 25
Township 38, North, Range
14 East, Fourth Principal Meridian,
as described hereon; and that from this evidence
I established a new monument and accessories
as described hereon to perpetuate the original
location of this corner.

Resident witnesses:

David Brownell

Tony Tillman



○ = Corner monument restored.

History of original corner establishment:

Original Government Survey in 1865 by H.&J.L. Nowlin. North between Sections 25 and 26,
40.00 chains, set Quarter Corner post to Sections 25 and 26, from which the following bear:

| | | | |
|-------|-----|-------|---------|
| Sugar | 20" | S86°W | 21 lks. |
| Sugar | 12" | S51°E | 20 lks. |

Description of corner evidence found:

No original corner evidence was recovered.

Corner position falls in Hwy 139, and was restored using the measurements as shown on
the State Highway Division Job #7115. Plan dated 9/2/47

Description of monument and accessories I established to perpetuate the original location of this corner.

At the restored corner position, set a 2½" diameter aluminum pipe monument, 3 feet long,
30" in the ground, with an aluminum cap stamped: T38N R14E, 1/4, S25, S26, 1983, S-1107.
Blazed and scribed the following new bearing trees:

| | | | |
|---------------------|-----|-------|-------------|
| Maple | 20" | N63°E | 129.82 feet |
| Power Pole #73-2574 | | N32°W | 34.45 feet |

Dated at Hiles, Wis., this 26th day of March, 1985

Signature William B. Cochrane Title Land Surveyor Registration No. S-1107
(County Surveyor, Registered Land Surveyor, or other duly authorized official)

Office of Register of Deeds, County of Forest, I hereby certify that the within
instrument was filed in this office for record on the 24th day of April, 1985
at 1:00 o'clock P. M.

Paul Aschenbrenner
(Register of Deeds)

By _____ Deputy

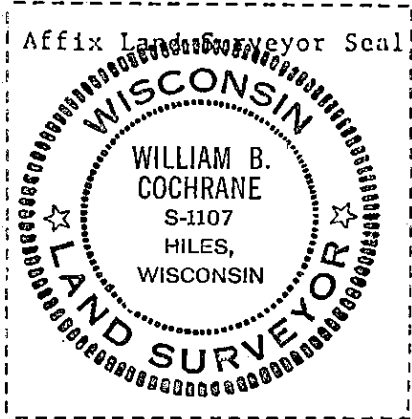
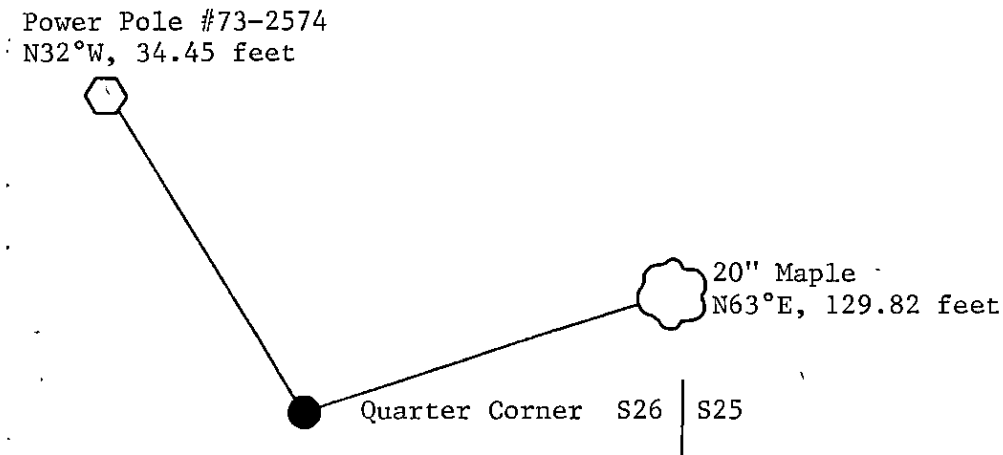
(e) Describe any material discrepancy between the location of the corner as restored or reestablished and the location of that corner as previously restored or reestablished by distance and direction. Show the discrepancy on the plan view drawing under (d), above. Show the distances between the corner as previously restored or reestablished and (1) the corner as restored or reestablished, and (2) to at least 2 of the witness monuments shown on the drawing in (d), above.

See drawing below.

(f) Was the corner restored through acceptance of (1) an obliterated evidence location, or, (2) a found perpetuated location?

Restored from accepted evidence.

(g&h) Was the corner reestablished through lost corner proportionate methods? If so, show the method, including the directions and distances to other public land survey corners used as evidence or used for proportioning in determining the corner location?



(i) I, William B. Cochrane
(type or print name) certify that the corner location shown on this record was determined by me or under my direction and control and that this U.S. Public Land Survey Monument Record is correct and complete to the best of my knowledge and belief.

William B. Cochrane
Signature

March 26, 1985
Date