

U.S. PUBLIC LAND SURVEY MONUMENT RECORD

I, TIFFANY N. HEISEL, DO HEREBY CERTIFY THAT ON THE 18TH DAY OF JUNE 2025, I FOUND EVIDENCE OF THE WEST QUARTER CORNER OF SECTION 36, T 38 N, R 14 E, FOURTH PRINCIPAL MERIDIAN, AND I RE-ESTABLISHED SAID CORNER ACCORDING TO THE WISCONSIN STATUTES AS SHOWN AND DESCRIBED HEREON.

THIS 25TH DAY OF JUNE, 2025.

Tiffany N. Heisel
TIFFANY N. HEISEL
PROFESSIONAL LAND SURVEYOR

rasSmith
100 West Lawrence Street, Suite 412
Appleton, WI 54911-5754
(920) 731-3499
rasSmith.com
CREATIVITY BEYOND ENGINEERING

WITNESSES TO CORNER LOCATION:

NICHOLAS J. KREPLINE

TIFFANY N. HEISEL

LEGEND

- 2.5" FOREST COUNTY ALUM MON FOUND
- ALUM WITNESS MONUMENT FOUND
- 1" IRON PIPE SET

Line Table		
Line #	Direction	Length
L1	S79°03'12"W	33.74
L2	N78°44'16"W	34.00
L3	N39°02'20"W	53.95
L4	N00°20'04"W	8.39



NOTE: MONUMENTS IN GRAVEL SHOULDER ARE 0.5' - 1.0' BELOW GRADE

WISCONSIN COORDINATE REFERENCE SYSTEM FOR FOREST COUNTY		
NAD83 (2011) COORDS.	NORTH (Y)	EAST (X)
	628,893.94	888,913.11

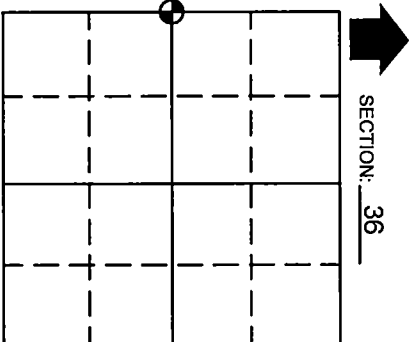
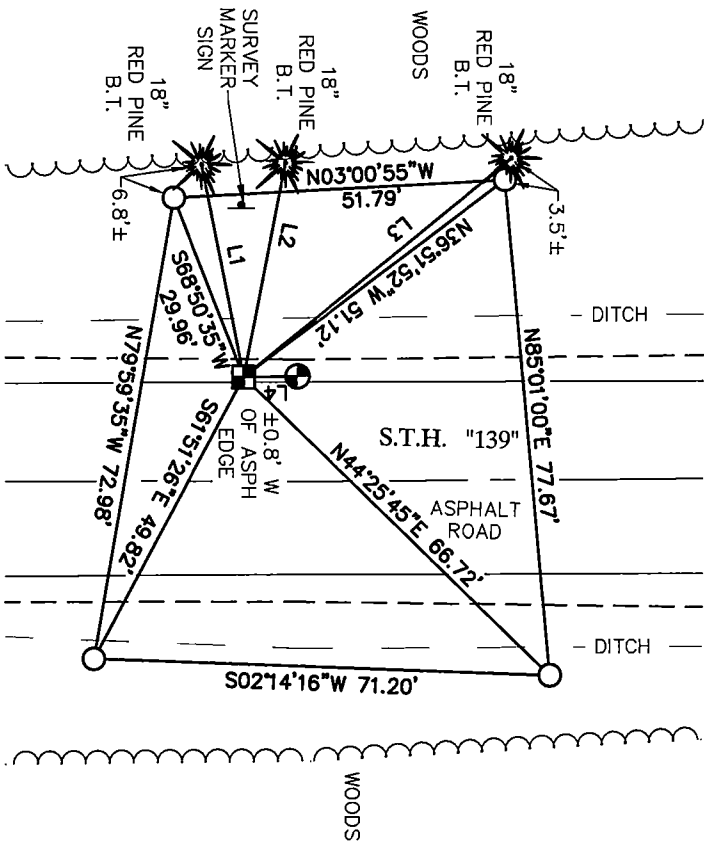
COORDINATES OBTAINED USING RTK GPS

HISTORY OF ORIGINAL CORNER ESTABLISHMENT:

- 1865 - SEPT. 9TH, J.L. NOWLIN, ORIGINAL GOVERNMENT SURVEY, NORTH BETWEEN SECTIONS 35 AND 36, 40.00 CHAINS, SET QUARTER POST, BEARING TREES: 26" SUGAR, S 8° W, 10 LINKS AND 8" IRONWOOD N 59° E 12 LINKS.
- 1982 - DEC. 7TH, N. HARRISON FOUND NO EVIDENCE OF THE ORIGINAL CORNER. HE RE-ESTABLISHED THE NORTHEAST AND SOUTHEAST CORNERS OF SECTION 35 AND SET THE CORNER BY PROPORTIONATE MEASUREMENT. HE SET A FOREST COUNTY ALUM. MON. IN THE SHOULDER OF THE ROAD 0.5' BELOW GROUND SURFACE AND BLAZED BEARING TREES.
- 1983 - SEPT 26TH, W. COCHRANE FOUND NO EVIDENCE OF THE CORNER WHICH FALLS IN HWY "139". HE RESTORED THE POSITION USING MEASUREMENTS AS SHOWN ON STATE HIGHWAY DIVISION JOB #7115, PLAN DATED 9/2/47. HE SET A 2.5" DIA. ALUM. PIPE MON. WITH CAP STAMPED T38N, R14E, 1/4, S35, S36, 1983, S-1107, 3' LONG 0.5' BELOW GRADE WITH BEARING TREES: 9" RED PINE S82°W, 35.00' AND 9" RED PINE N79°W, 34.25'. AN ALUM. MON WAS FOUND N00°01'06"W, 8.52'.
- 1994 - MARCH 7TH, G. PISONI FOUND COCHRANE'S CORNER MONUMENT, BEARING TREES, AND WITNESS MONUMENT TO THE NORTH AND MARKED A 10" RED PINE B.T. N38°W, 54.75' AND SET A STEEL SIGN POST 27.22' WEST OF THE CORNER MONUMENT.

DESCRIPTION OF CORNER EVIDENCE FOUND:

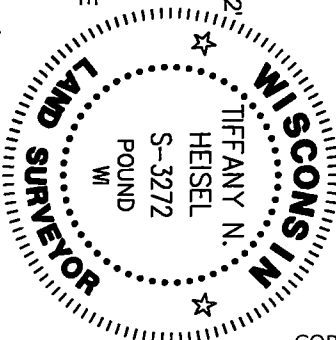
ON JUNE 18, 2025 RASMITH FOUND THE ALUMINUM MONUMENT SECTION CORNER ALONG WITH THE ALUM. WITNESS MONUMENT TO THE NORTH AND THE THREE BEARING TREES. FOUR ADDITIONAL WITNESSES WERE SET AND TIED AS SHOWN.



⊕ = CORNER LOCATION

T 38 N R 14 E
WISCONSIN

TOWN OF: ROSS
COUNTY OF: FOREST
DRAFTED BY: TNH



246177

FILED ON:

07/17/2025 02:00 PM

CORTNEY BRITTEN CLEEREMAN
REGISTER OF DEEDS

FOREST COUNTY WI
PAGES: 1

X-21

43814352000

Stock No. 26272

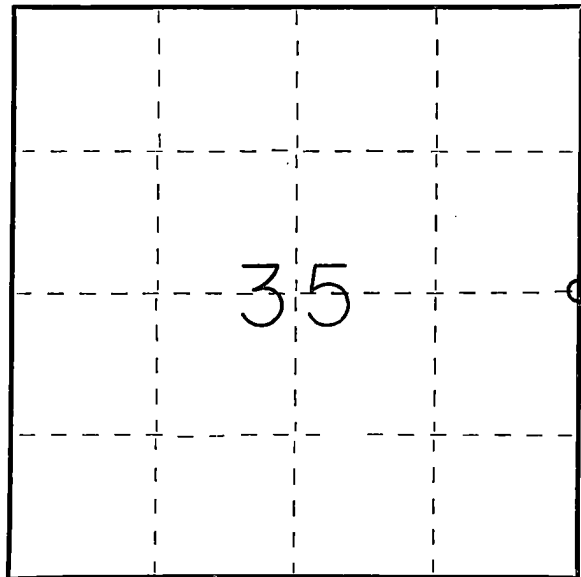


FORM 985

State of Wisconsin }
County of Forest } ss.

I Norman A. Harrison, do hereby
certify that on the 7th day
of December, 1982, I ~~found~~ set
~~evidence of the~~ East quarter
corner of Section 35
Township 38, North, Range
14 East, Fourth Principal Meridian,
as described hereon; and that ~~from this evidence~~
I established a new monument and accessories
as described hereon to perpetuate the original
location of this corner.

Resident witnesses:



○ = Corner monument restored.

CERTIFIED LAND CORNER RESTORATION

U.S. Public Land Corner

History of original corner establishment: Township 38 North, Range 14 East subdivided by:
James L. Nowlin, Deputy Surveyor Commenced Aug. 30, 1865
Completed Sept. 9, 1865

Original bearing trees

Sugar	24"	S 84° W	10 lks
Ironwood	8"	N 59° E	12 lks

Description of corner evidence found: No evidence of original corner found

Restablished the Northeast corner and the Southeast corner of the
section and set corner by proportionate measure.

Description of monument and accessories I established to perpetuate the original location of this corner.

Set corner by proportionate measure.

Set Forest County aluminum monument at corner in the shoulder of road 0.5' below
ground surface. April 25, 1983

Bearing trees or objects, magnetic bearings

Maple	11"	on east side of road, N 64° 00' E	93.8'
Yellow birch	9"	on east side of road, S 85° 54' E	62.1'
Culvert, CMP	24"	center and top S 5° 28' W	100.35'
Iron pipe	1 1/2"	S 89° 18' W	43.52'
Bituminous pavement		Easterly	4.9'

Dated at Fence, Wis., this 5th day of May, 1983.

Signature Norman A. Harrison Title Surveyor Registration No. 1394
(County Surveyor, Registered Land Surveyor, or other duly authorized official)

Office of Register of Deeds, County of Forest, I hereby certify that the within
instrument was filed in this office for record on the 5th day of May, 1983
at 4:30 o'clock P. M.

Eugene Stetson
(Register of Deeds)

By _____ Deputy

DOCUMENT NO. 123319



43814352000

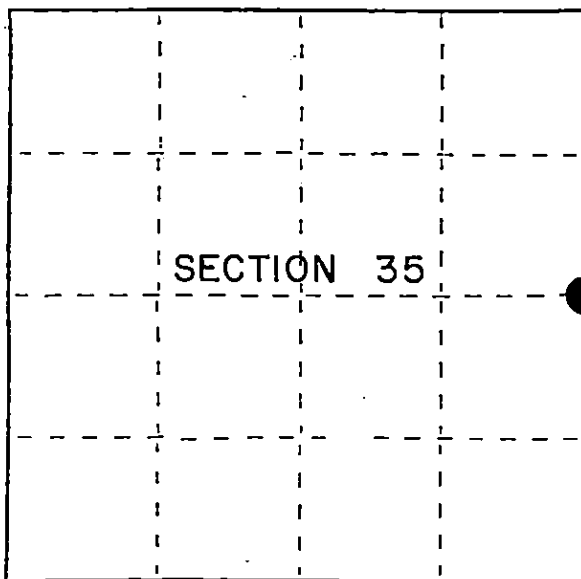
U.S. PUBLIC LAND SURVEY MONUMENT RECORD

Index No. **X-21**

State of Wisconsin }
County of Forest } ss.

I, Gary L. Pisoni, do hereby certify that on the 7th day of March, 1994, I found evidence of the East Quarter corner of Section 35 Township 38, North, Range 14 East, Fourth Principal Meridian, as described hereon; and that from this evidence I established a new monument and accessories as described hereon to perpetuate the original location of this corner.

Resident witnesses:



● = Corner monument restored.

History of original corner establishment:
Original Government Survey in 1865 by H. & J.L. Nowlin. At 40.00 chains, set Quarter Section Post, from which the following bear; Sugar, 26", S08°W, 10 lks., Ironwood, 8", N59°E, 12 lks.

In 1983, William Cochrane, RLS, with the U.S. Forest Service restored the corner position using State Hwy Plans. Corner position falls in Hwy 139. At the corner position set a 2½" x 36" Aluminum Monument with an aluminum cap stamped to identify the corner. Blazed and scribed the following new bearing trees;

Red Pine	9"	S82°W	35.00 feet
Red Pine	9"	N79°W	34.25 feet

Description of corner evidence found: Forest County Monument bears North, 8.52 feet

Found monument and bearing trees as described above.

Red Pine	9"	S82°W	35.60 feet
Red Pine	9"	N79°W	34.25 feet
Forest County Monument		North	8.52 feet

Description of monument and accessories I established to perpetuate the original location of this corner.

Blazed and scribed a new bearing tree; (Measurement is taken to a nail in side of tree)

Red Pine	10"	N38°W	54.75 feet
Steel Sign Post		West	27.22 feet

Dated at Iron River, MI, Wis., this 5th day of March, 1995

Signature Gary L. Pisoni Title Land Surveyor Registration No. S-1634
(County Surveyor, Registered Land Surveyor, or other duly authorized official)

Office of Register of Deeds, County of Forest, I hereby certify that the within instrument was filed in this office for record on the 20th day of March, 1997 at 1:30 o'clock P M.

(Register of Deeds)

By Gabe Tomlin Deputy

(e) Describe any material discrepancy between the location of the corner as restored or reestablished and the location of that corner as previously restored or reestablished by distance and direction. Show the discrepancy on the plan view drawing under (d), above. Show the distances between the corner as previously restored or reestablished and (1) the corner as restored or reestablished, and (2) to at least 2 of the witness monuments shown on the drawing in (d), above.

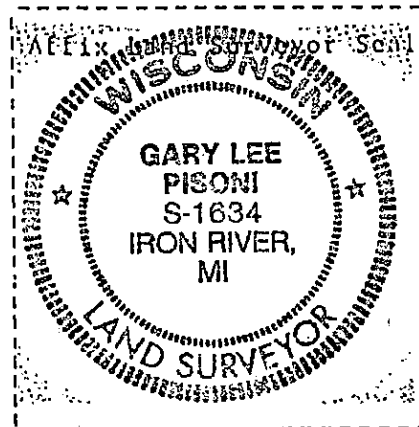
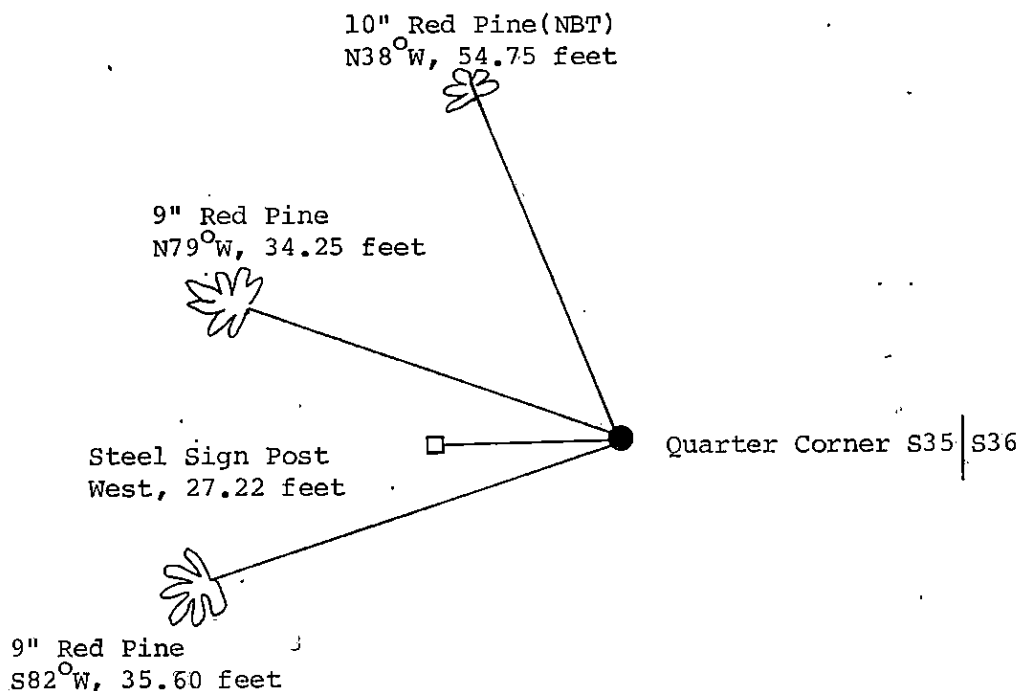
None

(f) Was the corner restored through acceptance of (1) an obliterated evidence location, or, (2) a found perpetuated location?

Restored through acceptance of a found perpetuated location.

(g,h) Was the corner reestablished through lost corner proportionate methods? If so, show the method, including the directions and distances to other public land survey corners used as evidence or used for proportioning in determining the corner location?

NO



(i) 1. Gary L. Pisoni
[Type or print name] certify that the corner location shown on this record was determined by me or under my direction and control and that this U.S. Public Land Survey Monument Record is correct and complete to the best of my knowledge and belief.

Signature

Date

Gary L. Pisoni

4-11-95

Stock No. 26273

Document Number 127910

U.S. PUBLIC LAND SURVEY MONUMENT RECORD

Index No. X-21

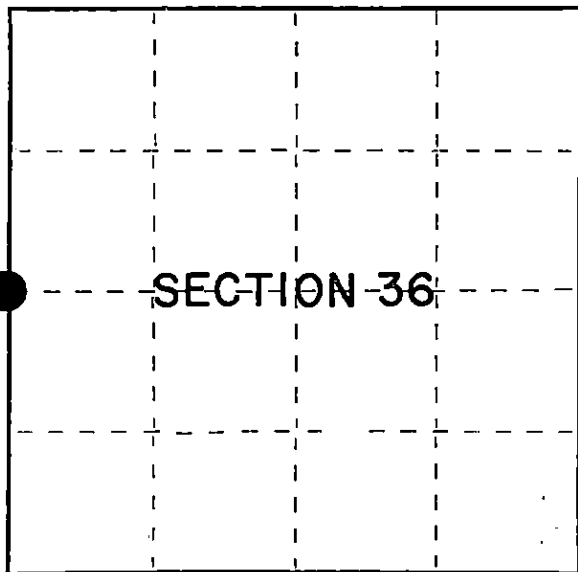
State of Wisconsin }
County of Forest } ss.

I, William B. Cochrane, do hereby certify that on the 26th day of September, 1983, I found evidence of the West Quarter corner of Section 36 Township 38 North, Range 14 East, Fourth Principal Meridian, as described hereon; and that from this evidence I established a new monument and accessories as described hereon to perpetuate the original location of this corner.

Resident witnesses:

David Brownell

Tony Tillman



○ = Corner monument restored.

History of original corner establishment:

Original Government Survey in 1865 by H.&J.L. Nowlin. North between Sections 35 and 36, 40.00 chains, set Quarter Corner post, to Sections 35 and 36, from which the following bear:

Sugar	26'	S 8°W	10 lks.
Ironwood	8"	N59°E	12 lks.

Description of corner evidence found:

No original corner evidence was recovered.

Corner position falls in Hwy 139, and was restored using the measurements as shown on the State Highway Division Job #7115. Plan dated 9/2/47.

Forest County aluminum pipe monument bears, N00°01'06"W, 8.52 feet

Description of monument and accessories I established to perpetuate the original location of this corner.

At the restored corner position, set a 2½" diameter aluminum pipe monument, 3 feet long, 3½ feet in the ground, with an aluminum cap stamped: T38N R14E, 1/4, S35, S36, 1983, S-1107. From which the following new blazed and scribed bearing trees bear:

R. Pine	9"	S82°W	35.00 feet
R. Pine	9"	N79°W	34.25 feet

Dated at Hiles, Wis., this 26th day of March, 1985

Signature William B. Cochrane Title Land Surveyor Registration No. S-1107
(County Surveyor, Registered Land Surveyor, or other duly authorized official)

Office of Register of Deeds, County of Forest, I hereby certify that the within instrument was filed in this office for record on the 24th day of April, 1985 at 1:00 o'clock P. M.

Paul Aschenbrenner
(Register of Deeds)

By Deputy

43814352000

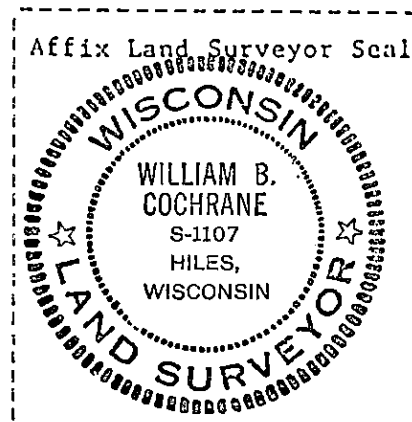
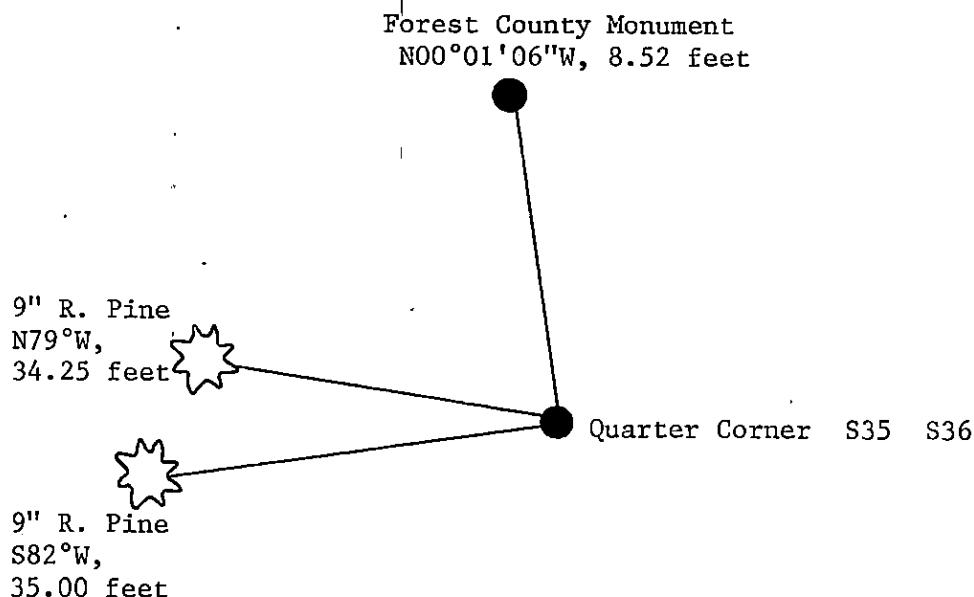
- (e) Describe any material discrepancy between the location of the corner as restored or reestablished and the location of that corner as previously restored or reestablished by distance and direction. Show the discrepancy on the plan view drawing under (d), above. Show the distances between the corner as previously restored or reestablished and (1) the corner as restored or reestablished, and (2) to at least 2 of the witness monuments shown on the drawing in (d), above.

See drawing below.

- (f) Was the corner restored through acceptance of (1) an obliterated evidence location, or, (2) a found perpetuated location?

Restored from accepted evidence.

- (g&h) Was the corner reestablished through lost corner proportionate methods? If so, show the method, including the directions and distances to other public land survey corners used as evidence or used for proportioning in determining the corner location?



- (i) I, William B. Cochrane
(Type or print name) certify that the corner location shown on this record was determined by me or under my direction and control and that this U.S. Public Land Survey Monument Record is correct and complete to the best of my knowledge and belief.

William B. Cochrane
Signature

March 26, 1985
Date