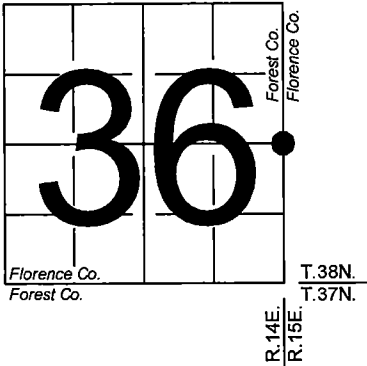


U. S. PUBLIC LAND SURVEY MONUMENT RECORD

NOTE: This form is intended and designed to fulfill all requirements of Wisconsin Administrative Code, Chapter A-E 7.08 U.S. Public Land Survey Monument Record (3) (a-i)

A-E 7.08(3)(a) Identity of corner:
East 1/4 Corner Section 36,
Township 38 North, Range 14 East
of the Fourth Principal Meridian,
Town of Ross, Forest County,
Wisconsin

WISCRS - FOREST COUNTY
N: 628,783.019 USft (XXX,XXX.XXX)
E: 894,187.101 USft (XXX,XXX.XXX)
Datum: NAD83 (2011)
GNSS Method RTK
GNSS Control WISCORS VRS



The coordinate value shown has been verified by the average of two or more GPS observations at a markedly different time. Coordinates shown in parenthesis are previously published values.

A-E 7.08(3)(b)

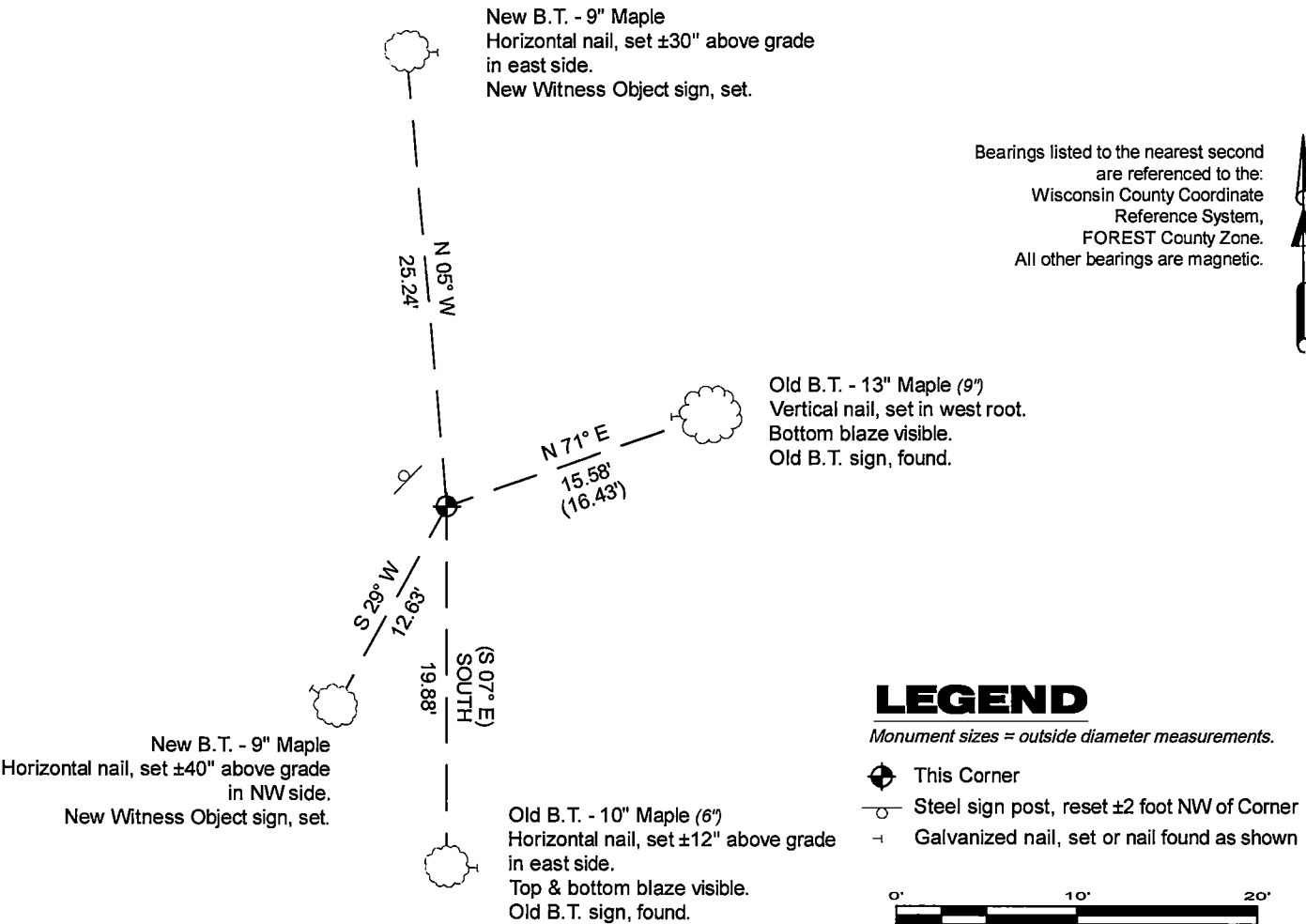
Original Surveyor: Artemas Curtis - October 1857
Cedar 10 - S 16° W, 27 Links, Hemlock 15 - N 6° E, 15 Links

See previous U.S. Public Land Survey Monument Record - X-25 - March 11, 1985 - Surveyor 1107 - William B. Cochrane - THENCE:

- April 2, 2016 - Surveyor 809-8 - Michael S. Hess - indicates this position as "Forest County aluminum monument" on Forest Co. record Map #381436-20160402.

November 07, 2024 - In performing the 2024 - Forest County - "PLSS Corner Remonumentation and GPS Services" project, I found a 2.25" diameter aluminum pipe with a 3.25" diameter aluminum cap stamped to identify the corner location. The monument is in an open hardwood forest, on the west side of a hill, the east edge of a marsh, and extends ±18" above grade. I also found 2 of Cochrane's bearing trees alive and in good condition. I established 2 new reference monuments as shown below.

A-E 7.08(3)(c)(d) Plan view of corner with references to at least 4 witness monuments.

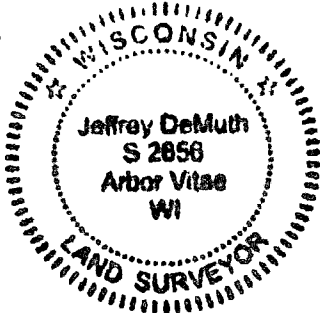


A-E 7.08(3)(e) 1857 Surveyor set a post, 1985 Surveyor found a 2 1/2" diameter aluminum pipe monument, with a aluminum cap stamped to identify corner, 2016 Surveyor found similar monument. In 2024, I found a 2.25" diameter aluminum pipe with a 3.25" diameter stamped aluminum cap stamped to identify corner location.

A-E 7.08(3)(f) I accept this monument in good faith as a FOUND PERPETUATED LOCATION of the corner.

A-E 7.08(3)(g)(h) This corner was not determined through lost-corner-proportionate methods.

A-E 7.08(3)(i) I, Jeffrey L. DeMuth, Professional Land Surveyor No. S-2656, hereby certify that the corner location on this record was determined by me or under my direction and control, and that this U.S. Public Land Survey Monument Record is correct and complete to the best of my knowledge, and belief.



SIGNATURE _____ DATE November 23, 2024

CERTIFIED LAND CORNER RESTORATION

Index No. **X 25**

State of Wisconsin }
County of Forest } ss.

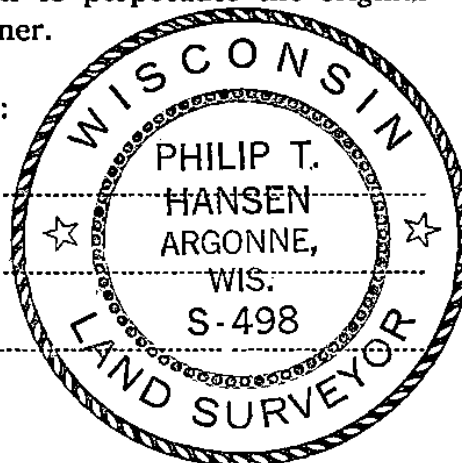
I Philip T. Hansen, do hereby
certify that on the 24th day
of April, 19 77, I found
evidence of the Quarter
corner of Section 36 & 31
Township 38, North, Range
14 & 15 East, Fourth Principal Meridian,
as described hereon; and that from this evidence
I established a new monument and accessories
as described hereon to perpetuate the original
location of this corner.

Resident witnesses:

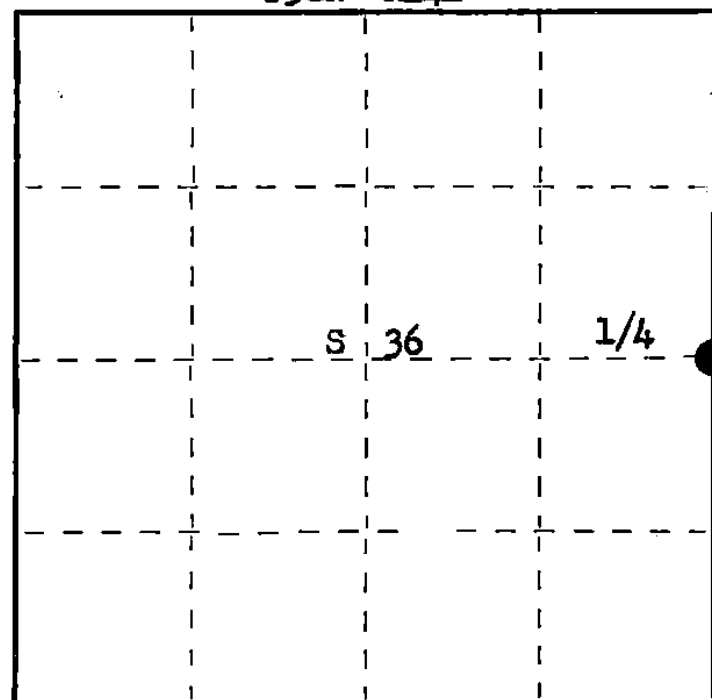
Glen Barker

Jim Claflin

Herb Wagoner



T38N R14E



○ = Corner monument restored.

History of original corner establishment:

Original Corner established by Alfred Millard in 1859 from which cedar 10" bears S16°W
27 links and hemlock 15" bears N6°E 15 links.
No records of any subsequent survey or restoration.

Description of corner evidence found:

Recovered a 3" squared cedar post with large rock cairn around base. A very old squared
5" cedar squared post was lying on the rock cairn.
No evidence of any old BTs were visible.
Connor Company surveyor and forester, Kolbe, has recognized this corner for 30 years.

Description of monument and accessories I established to perpetuate the original location of this corner.

Replaced cedar post with 2 1/2" Berntsen A-1 Federal Monument, aluminum with magnet in cap
and base.

Replaced the rock cairn around base of new monument, cap stamped:

NBTs - Sugar 5" S6°E, 30.1 links, scribed 1/4 BT.

Maple 7" N71°E, 25.4 links, scribed 1/4 BT.

Sugar 8" N49°E, 58.9 links, scribed 1/4 BT.

This corner sets on the northeast edge of a wet pot hole.

R T38N R
14 1/4 36 31 15
E E
S498-1977

Dated at Rhineland, Wis., this 3rd day of May, 19 77.

Signature Philip T. Hansen Title Registered Land Surveyor Registration No. S-498
(County Surveyor, Registered Land Surveyor, or other duly authorized official)

Office of Register of Deeds, County of Forest, I hereby certify that the within
instrument was filed in this office for record on the 5th day of May, 19 77.
at 4:00 o'clock P. M.

Eugene Stutzman
(Register of Deeds)

DOCUMENT NUMBER **111361**

By _____ Deputy

U.S. PUBLIC LAND SURVEY MONUMENT RECORD

Index No. **X-25**

State of Wisconsin }
County of Forest } ss.

I, William B. Cochrane, do hereby certify that on the 26th day of February, 1985, I found evidence of the East Quarter corner of Section 36 Township 38 North, Range 14 East, Fourth Principal Meridian, as described hereon; and that from this evidence I established a new monument and accessories as described hereon to perpetuate the original location of this corner.

Resident witnesses:
David Brownell

History of original corner establishment:

Original Government Survey in 1857 by Artemas Curtis. North between sections 31 and 36, 40.00 chains, set quarter corner post to sections 31 and 36. From which the following bear:

Cedar	10"	S16°W	27 lks.
Hemlock	15"	N6°E	15 lks.

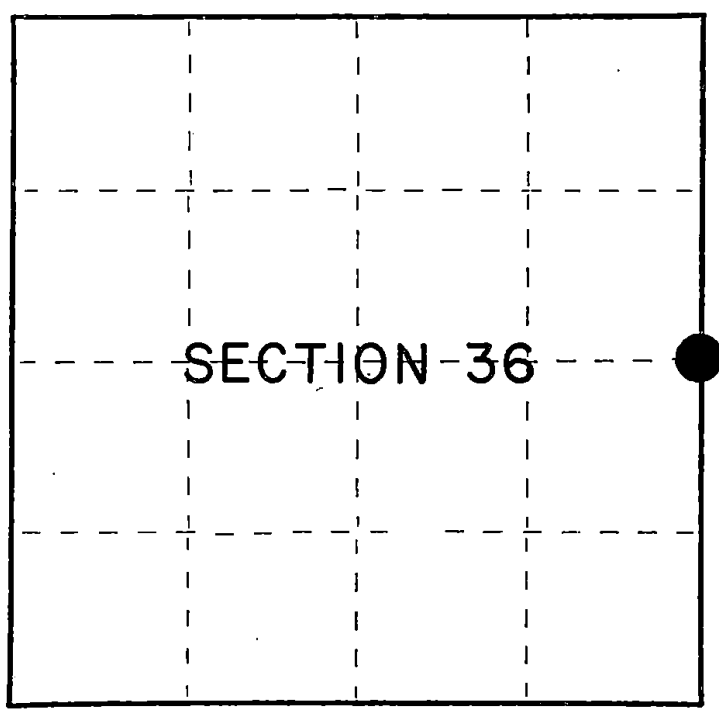
Description of corner evidence found:

A 2½" diameter aluminum pipe monument, with an aluminum cap stamped: T38N, R14E, R15E, 1/4, S31, S36, S-498, 1977, Forest County. From which the following bear:

Maple	9"	N71°E	16.43 feet
Maple	6"	S 7°E	19.88 feet
Maple	10"	N49°E	39.65 feet

Description of monument and accessories I established to perpetuate the original location of this corner.

Steel sign post	NW	2.00 feet
-----------------	----	-----------



○ = Corner monument restored.

Dated at Hiles, Wis., this 11th day of March, 1985

Signature William B. Cochrane Title Land Surveyor Registration No. S-1107
(County Surveyor, Registered Land Surveyor, or other duly authorized official)

Office of Register of Deeds, County of Forest, I hereby certify that the within instrument was filed in this office for record on the 24th day of April, 1985 at 1:00 o'clock P. M.

Paul Aschenbrenner
(Register of Deeds)

By _____ Deputy

FORM NO. 985-A
H.C. Miller Company
ST. LOUIS, MO.

Stock No. 26273

Document Number 127911

43814302000

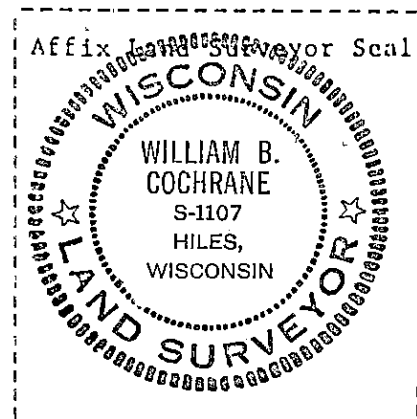
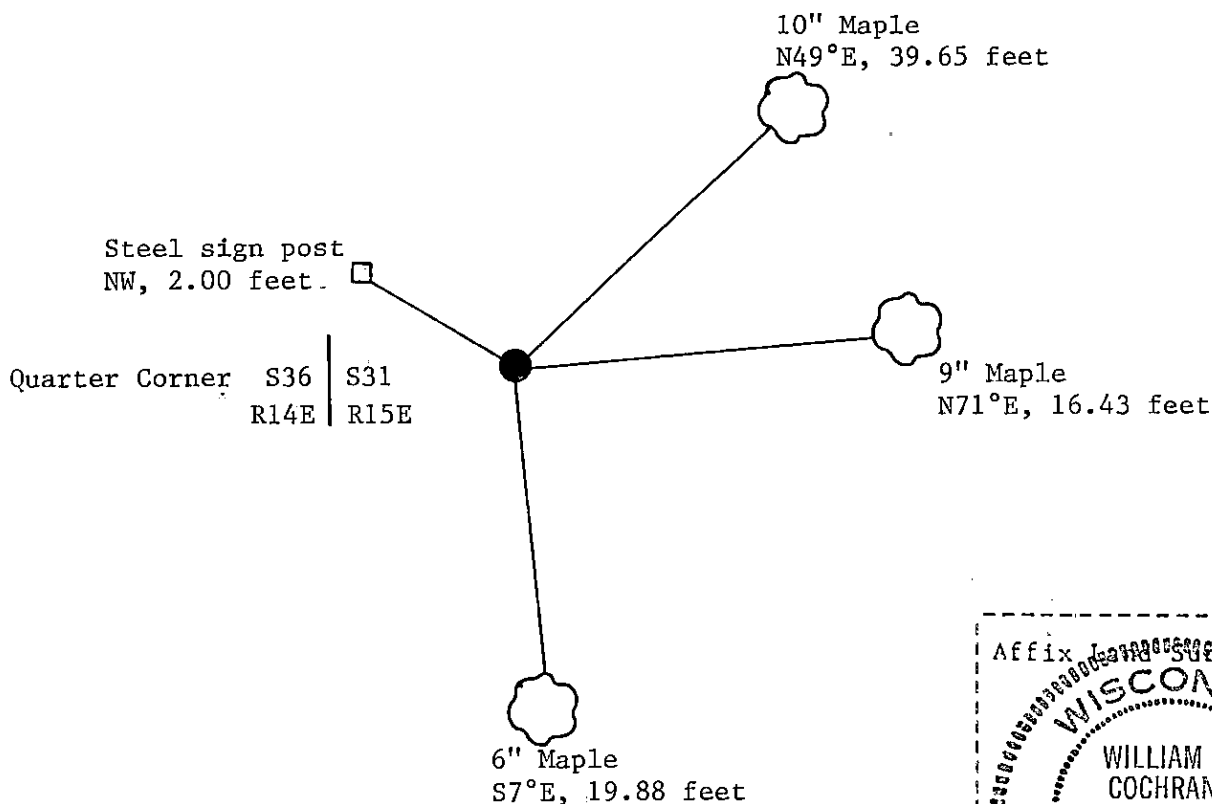
(e) Describe any material discrepancy between the location of the corner as restored or reestablished and the location of that corner as previously restored or reestablished by distance and direction. Show the discrepancy on the plan view drawing under (d), above. Show the distances between the corner as previously restored or reestablished and (1) the corner as restored or reestablished, and (2) to at least 2 of the witness monuments shown on the drawing in (d), above.

See drawing below.

(f) Was the corner restored through acceptance of (1) an obliterated evidence location, or, (2) a found perpetuated location?

Restored through acceptance of a found perpetuated location.

(g&h) Was the corner reestablished through lost corner proportionate methods? If so, show the method, including the directions and distances to other public land survey corners used as evidence or used for proportioning in determining the corner location?



(i) I, William B. Cochrane
[type or print name] certify that the corner location shown
on this record was determined by me or under my direction and
control and that this U.S. Public Land Survey Monument Record is
correct and complete to the best of my knowledge and belief.

William B. Cochrane
Signature

March 11, 1985
Date