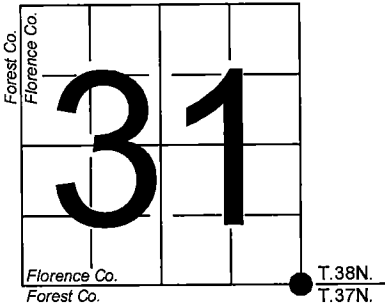


U. S. PUBLIC LAND SURVEY MONUMENT RECORD

NOTE: This form is intended and designed to fulfill all requirements of Wisconsin Administrative Code, Chapter A-E 7.08 U.S. Public Land Survey Monument Record (3) (a-i)

A-E 7.08(3)(a) Identity of corner:  
Southeast Corner Section 31,  
Township 38 North, Range 15 East  
of the Fourth Principal Meridian,  
Town of Fence, Florence County,  
Wisconsin

WISCORS - FOREST COUNTY  
N: 626148.221 USft ( XXX,XXX.XXX)  
E: 899511.593 USft ( XXX,XXX.XXX)  
Datum: NAD83 (2011)  
GNSS Method RTK  
GNSS Control WISCORS VRS



The coordinate value shown has been verified by the average of two or more GPS observations at a markedly different time. Coordinates shown in parenthesis are previously published values.

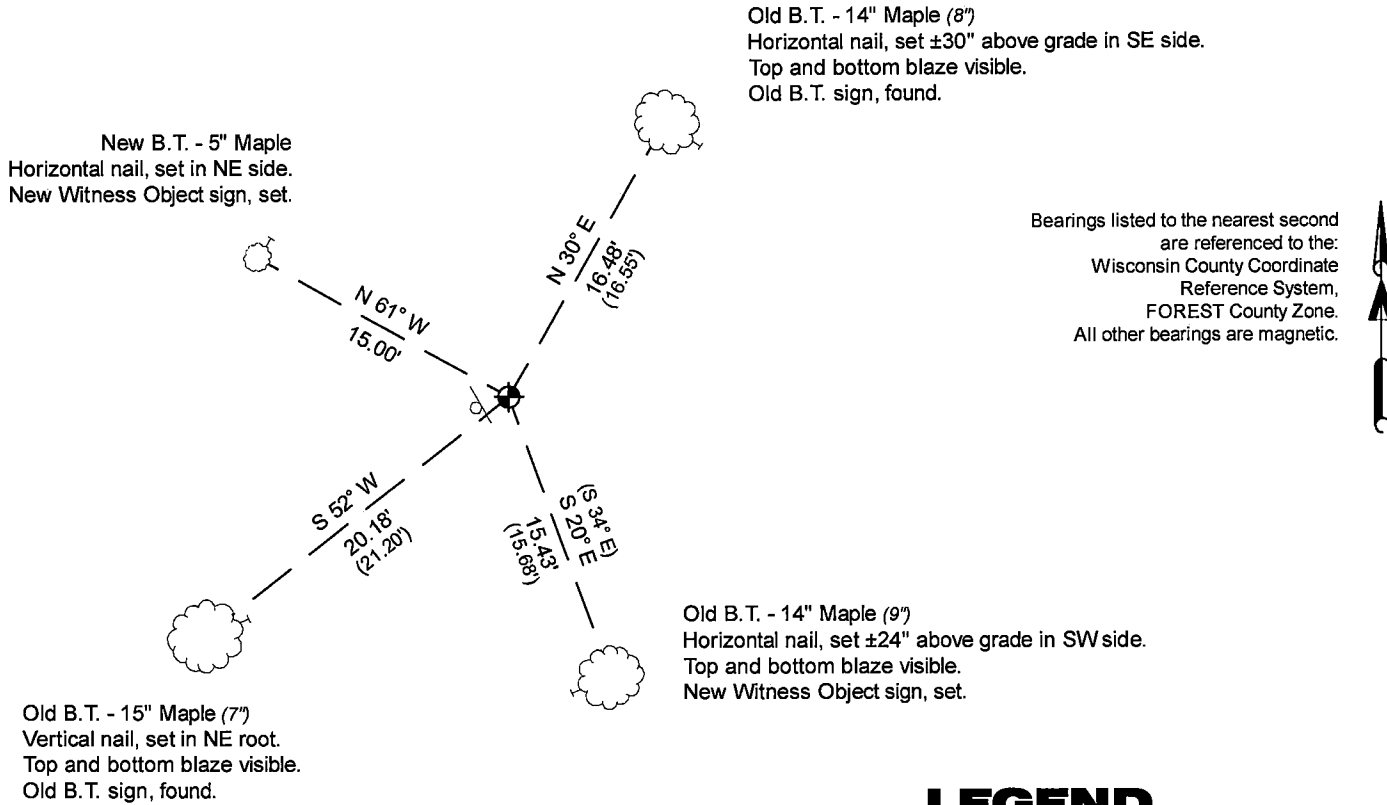
A-E 7.08(3)(b)

Original Surveyor: Artemas Curtis - September 1857 to October 1857  
Yellow Birch 12 - N 45° W, 45 Links, Sugar 10 - N 2° E, 18 Links, Yellow Birch 18 - S 61° E, 51 Links, Sugar 12, S 7°W, 38 Links

See previous U.S.Public Land Survey Monument Record - A-5 - April 2, 1985 - Surveyor 1107 - William B. Cochrane - THENCE:

November 06, 2024 - In performing the 2024 - Forest County - "PLSS Corner Remonumentation and GPS Services" project, I found a 2.25" diameter aluminum pipe with a 3.25" diameter stamped aluminum cap. The monument is in an open hardwood forest, and extends ±15" above grade, and is located ±70 feet south of a snowmobile trail. I also found 3 of Cochrane's bearing trees alive and in good condition. I established 1 new reference monuments as shown below.

A-E 7.08(3)(c)(d) Plan view of corner with references to at least 4 witness monuments.



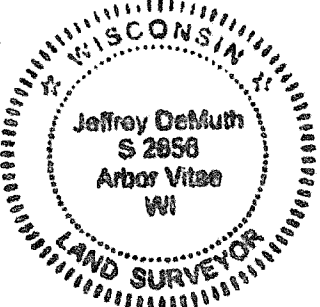
LEGEND

Monument sizes = outside diameter measurements.  
This Corner  
Steel sign post, found ±1 foot SW of Corner  
Galvanized nail, set or nail found as shown

A-E 7.08(3)(e) 1857 Surveyor set a post, 1985 Surveyor set a 2 1/2" diameter aluminum pipe monument, with an aluminum cap stamped to identify corner. I found a 2.25" diameter aluminum pipe with a 3.25" diameter stamped aluminum cap in 2024.

A-E 7.08(3)(f) I accept this monument in good faith as a FOUND PERPETUATED LOCATION of the corner.  
A-E 7.08(3)(g)(h) This corner was not determined through lost-corner-proportionate methods.

A-E 7.08(3)(i) I, Jeffrey L. DeMuth, Professional Land Surveyor No. S-2656, hereby certify that the corner location on this record was determined by me or under my direction and control, and that this U.S. Public Land Survey Monument Record is correct and complete to the best of my knowledge, and belief.



SIGNATURE \_\_\_\_\_ DATE November 23, 2024

U.S. PUBLIC LAND SURVEY MONUMENT RECORD

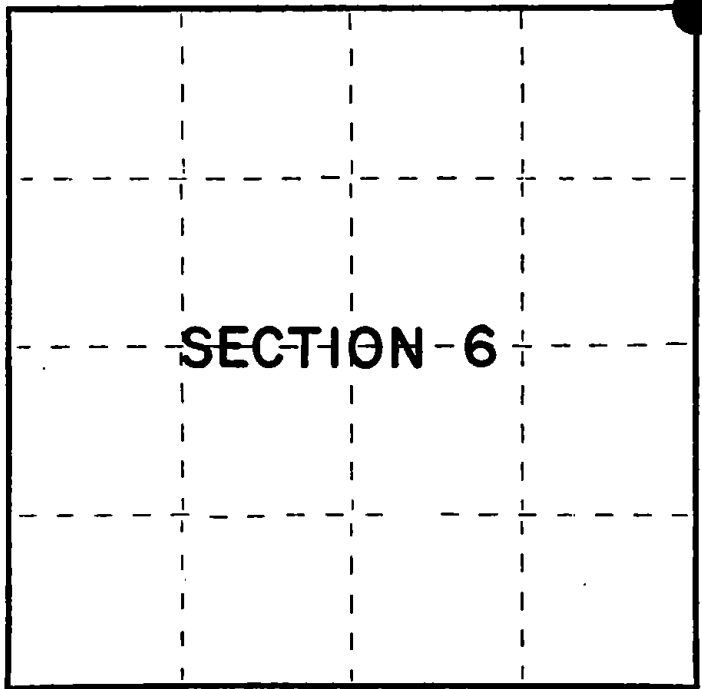
Index No. **A-5**

State of Wisconsin }  
County of Forest } ss.

I William B. Cochrane, do hereby  
certify that on the 16th day  
of August, 1983, I found  
evidence of the Northeast Section  
corner of Section 6  
Township 37, North, Range  
15 East, Fourth Principal Meridian,  
as described hereon; and that from this evidence  
I established a new monument and accessories  
as described hereon to perpetuate the original  
location of this corner.

Resident witnesses:

Tony Tillman



○ = Corner monument restored.

History of original corner establishment:

Original Government Survey in 1857 by Artemas Curtis. West Between Sections 5 and 32,  
80.00 chains, set Section Corner post to Sections 5, 5, 31, and 32, from which the  
following bear:

Y. Birch	12"	N45°W	45 lks.
Sugar	10"	N 2°E	18 lks.
Y. Birch	18"	S61°E	51 lks.
Sugar	12"	S 7°W	38 lks.

Description of corner evidence found:

2½" diameter iron pipe.

I accept the 2½" diameter iron pipe as the best available evidence for restoring  
the corner position.

No original corner evidence was recovered.

Description of monument and accessories I established to perpetuate the original location of this corner.

In place of 2½" diameter iron pipe, set a 2½" diameter aluminum pipe monument, 3 feet  
long, 30 inches in the ground, with an aluminum cap stamped: T38N R15E, S31, S32, S5,  
S6, T37N, 1983, S-1107. From which the following new blazed and scribed bearing trees bear:

Maple	8"	N30°E	16.55 feet
Maple	9"	S34°E	15.68 feet
Basswood	10"	N12°W	11.58 feet
Steel Sign Post		West	1.00 feet
Maple	7"	S52°W	21.20 feet

Dated at Hiles, Wis., this 2nd day of April, 1985

Signature William B. Cochrane Title Land Surveyor Registration No. S-1107  
(County Surveyor, Registered Land Surveyor, or other duly authorized official)

Office of Register of Deeds, County of Forest, I hereby certify that the within  
instrument was filed in this office for record on the 24th day of April, 1985  
at 1:00 o'clock P. M.

Paul Aschenbrenner  
(Register of Deeds)

By \_\_\_\_\_ Deputy

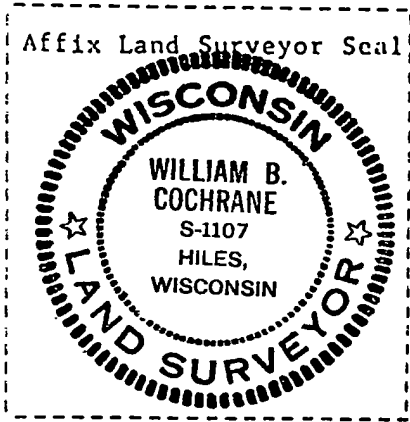
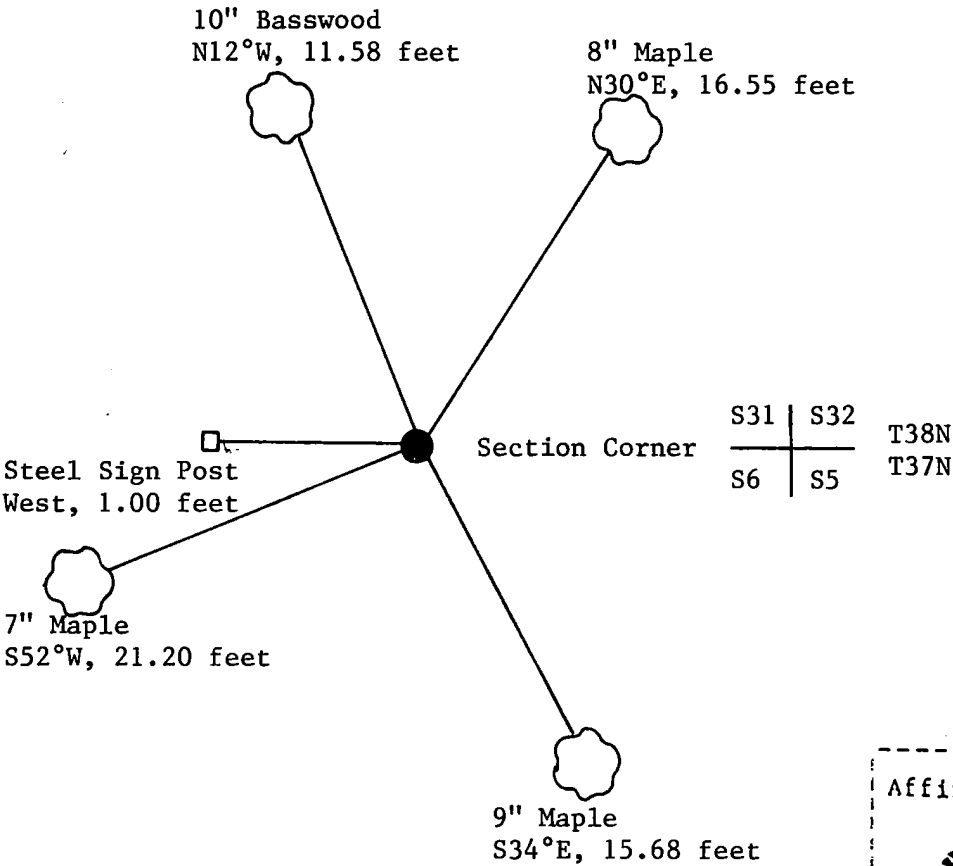
(e) Describe any material discrepancy between the location of the corner as restored or reestablished and the location of that corner as previously restored or reestablished by distance and direction. Show the discrepancy on the plan view drawing under (d), above. Show the distances between the corner as previously restored or reestablished and (1) the corner as restored or reestablished, and (2) to at least 2 of the witness monuments shown on the drawing in (d), above.

See drawing below.

(f) Was the corner restored through acceptance of (1) an obliterated evidence location, or, (2) a found perpetuated location?

Restored from accepted evidence.

(g&h) Was the corner reestablished through lost corner proportionate methods? If so, show the method, including the directions and distances to other public land survey corners used as evidence or used for proportioning in determining the corner location?



(i) I, William B. Cochrane  
(type or print name) certify that the corner location shown on this record was determined by me or under my direction and control and that this U.S. Public Land Survey Monument Record is correct and complete to the best of my knowledge and belief.

William B. Cochrane April 2, 1985  
Signature Date