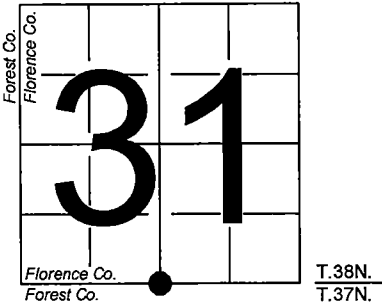


U. S. PUBLIC LAND SURVEY MONUMENT RECORD

NOTE: This form is intended and designed to fulfill all requirements of Wisconsin Administrative Code, Chapter A-E 7.08 U.S. Public Land Survey Monument Record (3) (a-i)

A-E 7.08(3)(a) Identity of corner:
South 1/4 Corner Section 31,
Township 38 North, Range 15 East
of the Fourth Principal Meridian,
Town of Fence, Florence County,
Wisconsin

WISCRS - FOREST COUNTY
N: 626,161.877 USft (XXX,XXX.XXX)
E: 896,878.568 USft (XXX,XXX.XXX)
Datum: NAD83 (2011)
GNSS Method RTK
GNSS Control WISCORS VRS



The coordinate value shown has been verified by the average of two or more GPS observations at a markedly different time. Coordinates shown in parenthesis are previously published values.

A-E 7.08(3)(b)

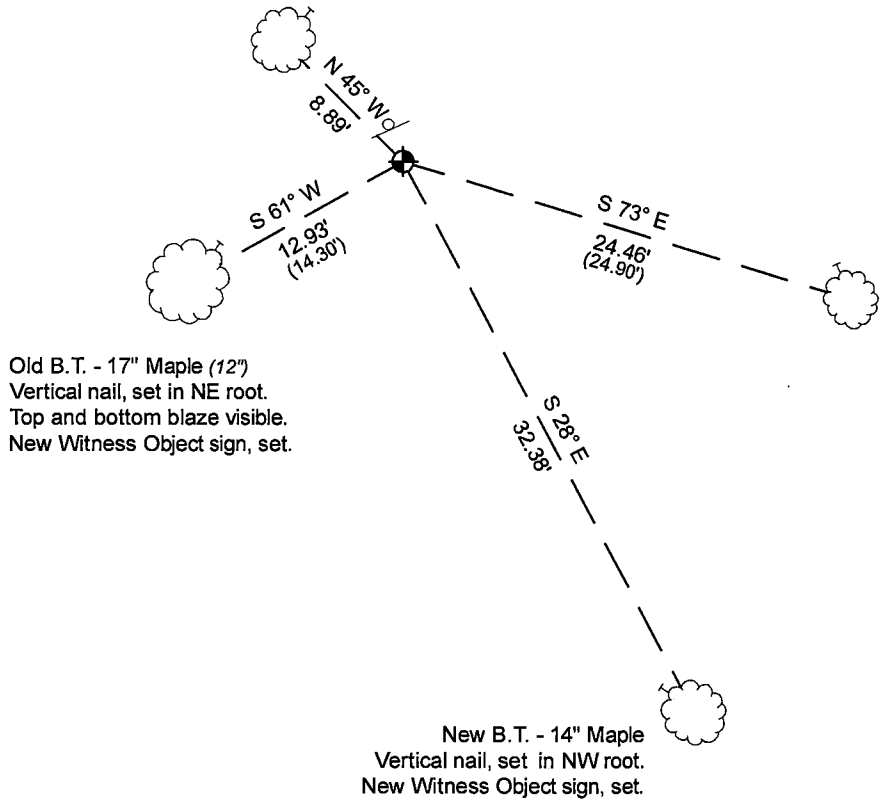
Original Surveyor: Artemas Curtis - September 1857 to October 1857
Yellow Birch 22 - N 8° W, 38 Links, Hemlock 16 - S 41° E, 24 Links

See previous U.S. Public Land Survey Monument Record - A-3 - March 12, 1985 - Surveyor 1107 - William B. Cochrane - THENCE:

November 07, 2024 - In performing the 2024 - Forest County - "PLSS Corner Remonumentation and GPS Services" project, I found a 2.25" diameter galvanized iron pipe with a 3" diameter stamped brass cap. The monument is in an open hardwood forest, and extends ±14" above grade. I also found 2 of Cochrane's bearing trees alive and in good condition. I established 2 new reference monuments as shown below.

A-E 7.08(3)(c)(d) Plan view of corner with references to at least 4 witness monuments.

New B.T. - 14" Maple
Horizontal nail, set
±28" above grade in NE side.
New Witness Object sign, set.

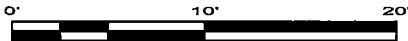


Bearings listed to the nearest second
are referenced to the:
Wisconsin County Coordinate
Reference System,
FOREST County Zone.
All other bearings are magnetic.

LEGEND

Monument sizes = outside diameter measurements.

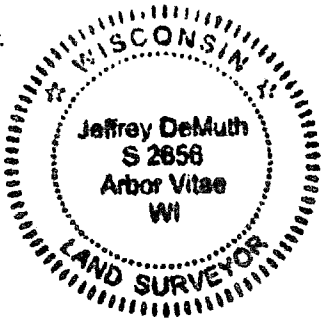
- This Corner
- Steel sign post, found ±1 foot NW of Corner
- Galvanized nail, set or nail found as shown



A-E 7.08(3)(e) 1857 Surveyor set a post, 1985 Surveyor found a 2" inside diameter (2 1/2") galvanized iron pipe with brass cap stamped to identify corner. I found a 2.25" diameter galvanized iron pipe with a 3" diameter stamped brass cap in 2024.

A-E 7.08(3)(f) I accept this monument in good faith as a FOUND PERPETUATED LOCATION of the corner.
A-E 7.08(3)(g)(h) This corner was not determined through lost-corner-proportionate methods.

A-E 7.08(3)(i) I, Jeffrey L. DeMuth, Professional Land Surveyor No. S-2656, hereby certify that the corner location on this record was determined by me or under my direction and control, and that this U.S. Public Land Survey Monument Record is correct and complete to the best of my knowledge, and belief.



SIGNATURE

November 23, 2024

DATE

43815310020

43815310020

A3

CERTIFIED LAND CORNER RESTORATION

State of Wisconsin

County of Forest

SS.

I, Jean F. Resvick, do hereby certify that on the 17th day of August, 1972, I found evidence of the North Quarter corner of Section 6 Township 37 North, Range 15 East, Fourth Principal Meridian, as described hereon; and that from this evidence I established a new monument and accessories as described hereon to perpetuate the original location of this corner:

Description of original monument and accessories and subsequent restorations:

Surveyed in 1857 by Artemas Curtis

West between sections 6 and 31. 40.0 chains set quarter, section post between sections 6 and 31.

Y. Birch, 22", N8W, 38 lks.

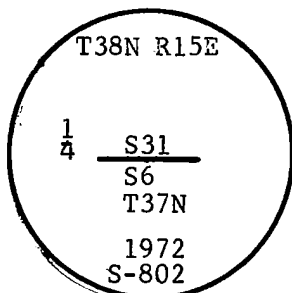
Hemlock, 16" S41E, 24 lks.

Description of corner evidence found:

2 inch. steel pipe in mound of rock. Pipe is 18 inches above ground. 24" rotten Hemlock stump with overgrowth showing scribing impression. At a point N41W, 24 lks. and S8E, 38 lks, from a Y. Birch stump hole found evidence of a very old post point.

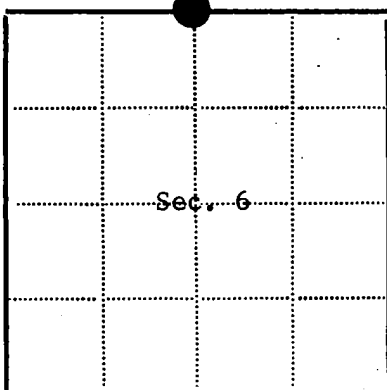
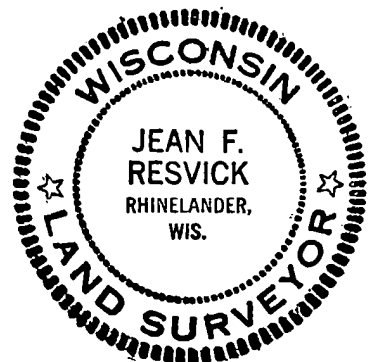
Description of monument and accessories I established to perpetuate the original location of this corner:

Replaced the old post point found with a 2 inch. inside diam. galvanized wrought iron pipe, 5 feet long, filled with concrete with a brass cap marked:



From which the following accessories bear:

Maple, 6", S73E, 24.90 feet
 Maple 8", S61W, 14.30 feet
 2" iron pipe as found, N40W,
 5.50 feet
 steel sign post, 1.0 feet NW



● = Corner monument restored

□ =

Resident witnesses.....

Dated at Rhinelander Wisconsin, this 21st day of November 1972.

Signature *Jean F. Resvick* Title Land Surveyor
 (County Surveyor, Registered Land Surveyor, or other duly authorized official)

Surveyors Registration No. S-802 DOCUMENT NUMBER 102910

Office of Register of Deeds County of Forest
 I hereby certify that the within instrument was filed in this office for record on the 15th day of February 1973 and was filed in Book No. Page No. of County Records.

Signature *Eugene Stutzman* Title Register of Deeds

Township 37 North, Range 15 East, Section 6, Index No. A-3, Page No.

43815310020

U.S. PUBLIC LAND SURVEY MONUMENT RECORD

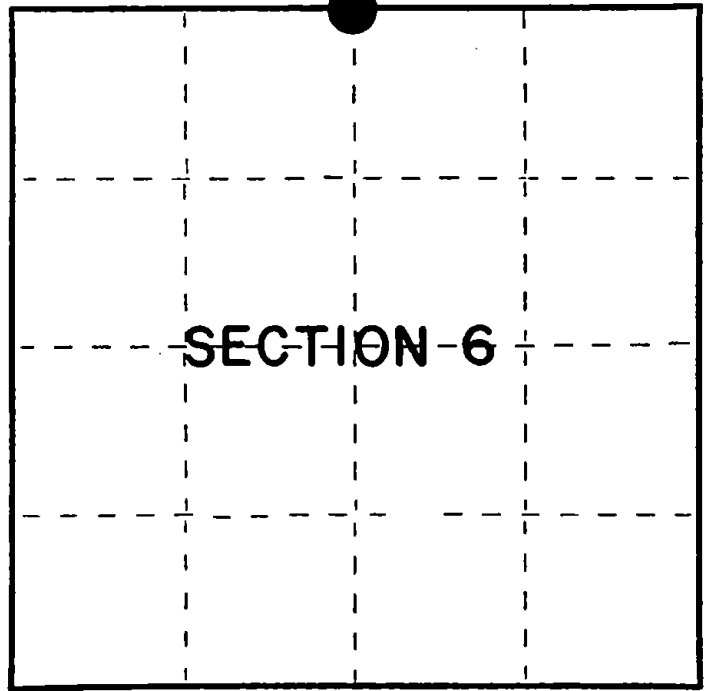
Index No. **A-3**

State of Wisconsin }
County of Forest } ss.

I William B. Cochrane, do hereby
certify that on the 26th day
of February, 19 85, I found
evidence of the North Quarter
corner of Section 6
Township 37, North, Range
15 East, Fourth Principal Meridian,
as described hereon; and that from this evidence
I established a new monument and accessories
as described hereon to perpetuate the original
location of this corner.

Resident witnesses:

David Brownell



○ = Corner monument restored.

History of original corner establishment:

Original Government Survey in 1857 by Artemas Curtis. In 1972, Jean Resvick, a Land Surveyor with the U.S. Forest Service, found a post point in concurrence with original bearing tree evidence. In place of post, set a 2" diameter galvanized iron pipe, 5 feet long, with a brass cap stamped: T38N R15E, 1/4, S1, S6, T37N, 1972, S-802. From which the following bear:

Maple	6"	S73°E	24.90 feet
Maple	8"	S61°W	14.30 feet
Iron pipe	2"	N40°W	5.50 feet

Description of corner evidence found:

Found monument as described and in place, from which the following bear:

Maple	9"	S73°E	24.90 feet
Maple	12"	S61°W	14.30 feet
Iron pipe	2"	N40°W	5.50 feet

Description of monument and accessories I established to perpetuate the original location of this corner.

None

Dated at Hiles Wis., this 12th day of March, 19 85.

Signature William B. Cochrane
William B. Cochrane Title Land Surveyor Registration No. S-1107
(County Surveyor, Registered Land Surveyor, or other duly authorized official)

Office of Register of Deeds, County of Forest, I hereby certify that the within
instrument was filed in this office for record on the 24th day of April, 19 85
at 1:00 o'clock P. M.

Paul Aschenbrenner
(Register of Deeds)

By _____ Deputy

FORM NO. 985-A

H.C. Miller Company

Stock No. 26273

Document Number 127861

43815310020

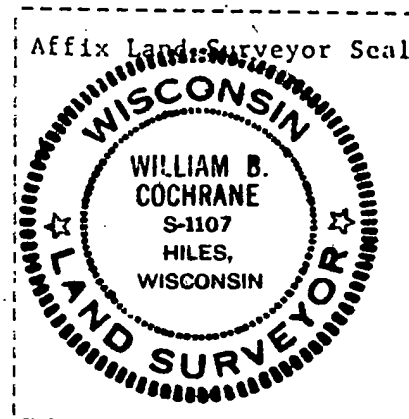
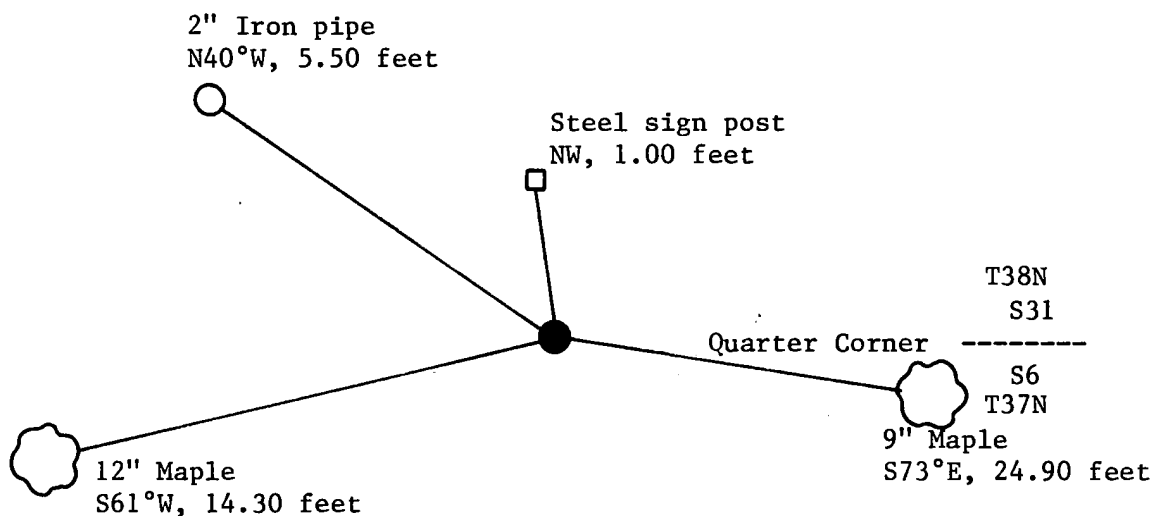
(e) Describe any material discrepancy between the location of the corner as restored or reestablished and the location of that corner as previously restored or reestablished by distance and direction. Show the discrepancy on the plan view drawing under (d), above. Show the distances between the corner as previously restored or reestablished and (1) the corner as restored or reestablished, and (2) to at least 2 of the witness monuments shown on the drawing in (d), above.

See drawing below.

(f) Was the corner restored through acceptance of (1) an obliterated evidence location, or, (2) a found perpetuated location?

Restored through acceptance of a found perpetuated location.

(g&h) Was the corner reestablished through lost corner proportionate methods? If so, show the method, including the directions and distances to other public land survey corners used as evidence or used for proportioning in determining the corner location?



(i) I, William B. Cochrane
(type or print name) certify that the corner location shown on this record was determined by me or under my direction and control and that this U.S. Public Land Survey Monument Record is correct and complete to the best of my knowledge and belief.

William B. Cochrane
Signature

March 12, 1985
Date