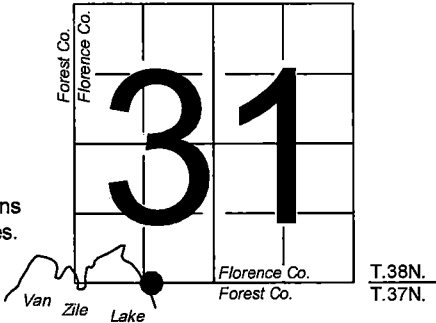


U. S. PUBLIC LAND SURVEY MONUMENT RECORD

NOTE: This form is intended and designed to fulfill all requirements of Wisconsin Administrative Code, Chapter A-E 7.08 U.S. Public Land Survey Monument Record (3) (a-i)

A-E 7.08(3)(a) Identity of corner:  
Meander Corner South line Section 31,  
EAST SIDE of Van Zile Lake  
Township 38 North, Range 15 East  
of the Fourth Principal Meridian,  
Town of Fence, Florence County, Wisconsin

WISCRS - FOREST COUNTY  
N: 626,161.641 USft (XXX,XXX.XXX)  
E: 895,630.416 USft (XXX,XXX.XXX)  
Datum: NAD83 (2011)  
GNSS Method RTK  
GNSS Control WISCORS VRS



The coordinate value shown has been verified by the average of two or more GPS observations at a markedly different time. Coordinates shown in parenthesis are previously published values.

A-E 7.08(3)(b)

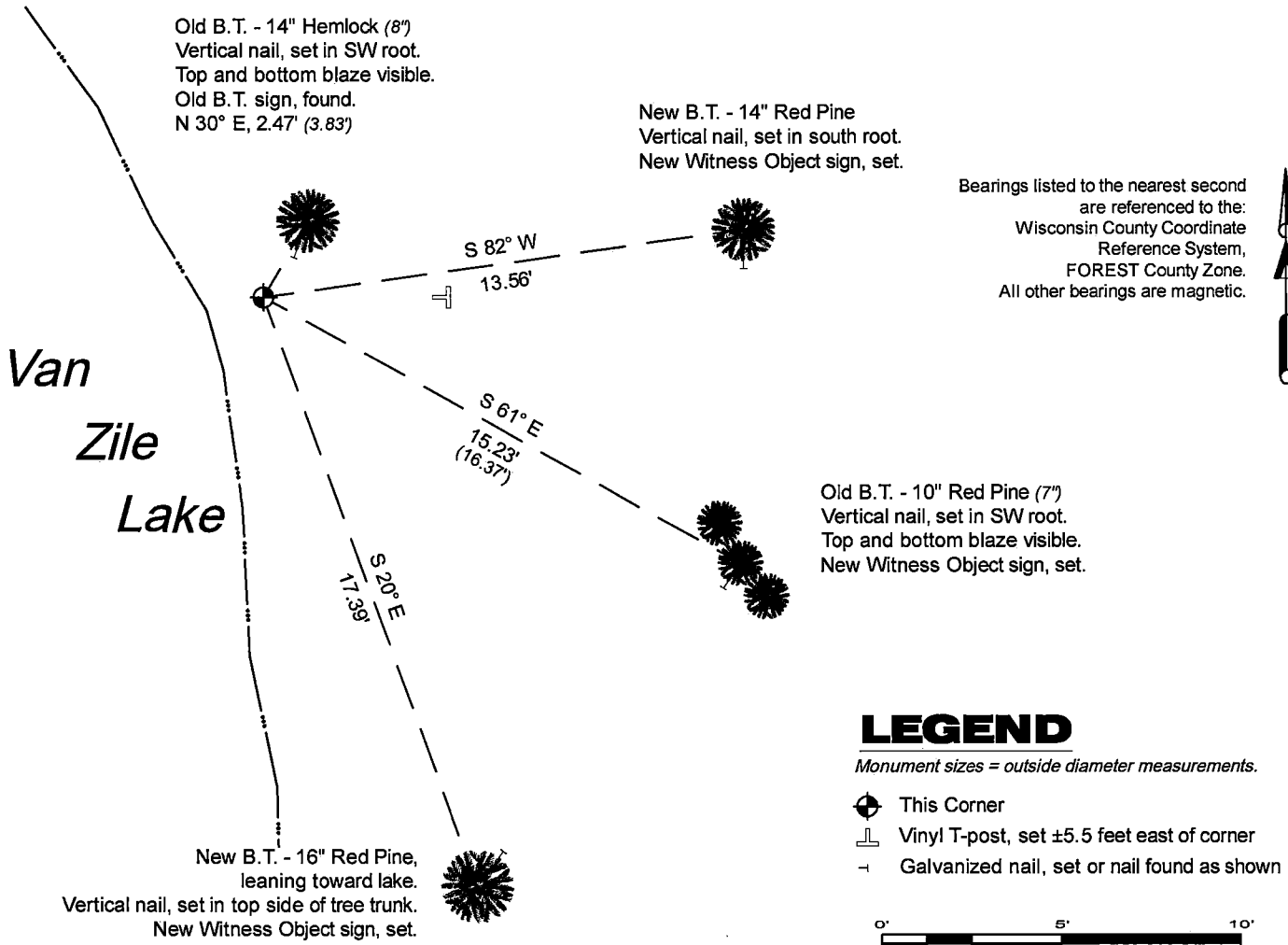
Original Surveyor: Artemas Curtis - September 1857 to October 1857 - "Yellow Pine 5 for corner"  
Yellow Pine 12 - N 15° W, 59 Links, Hemlock 14 - S 75° E, 28 Links

See previous Certified Land Corner Restoration - A 2,3 - February 4, 1970 - Surveyor 802 - Jean F. Resvick - THENCE:

November 07, 2024 - In performing the 2024 - Forest County - "PLSS Corner Remonumentation and GPS Services" project, I found a 2.25" diameter galvanized iron pipe with a 3" diameter stamped brass cap. The monument is ±1.5 feet from the shore of Van Zile Lake, and extends ±6" above grade. I also found 2 of Resvick's bearing trees alive and in good condition. I established 2 new reference monuments as shown below.

NOTE: Monument cap is rotated 90° clockwise.

A-E 7.08(3)(c)(d) Plan view of corner with references to at least 4 witness monuments.

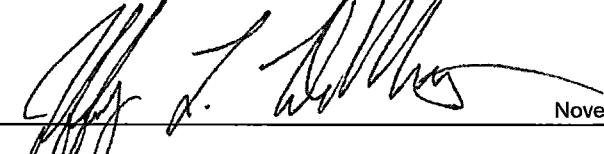


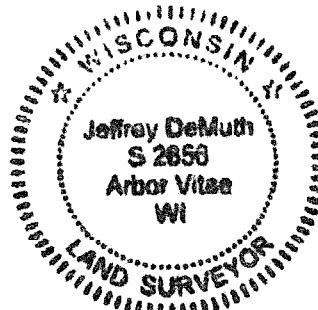
A-E 7.08(3)(e) 1857 Surveyor used a Yellow Pine as corner, 1970 Surveyor set a 2" inside diameter galvanized wrought iron pipe with brass cap stamped to identify corner. I found a 2.25" diameter galvanized iron pipe with a 3" diameter stamped brass cap in 2024.

A-E 7.08(3)(f) I accept this monument in good faith as a FOUND PERPETUATED LOCATION of the corner.

A-E 7.08(3)(g)(h) This corner was not determined through lost-corner-proportionate methods.

A-E 7.08(3)(i) I, Jeffrey L. DeMuth, Professional Land Surveyor No. S-2656, hereby certify that the corner location on this record was determined by me or under my direction and control, and that this U.S. Public Land Survey Monument Record is correct and complete to the best of my knowledge, and belief.

SIGNATURE  DATE November 23, 2024



## CERTIFIED LAND CORNER RESTORATION

State of Wisconsin

County of Forest

} ss.

I Jean F. Resvick, do hereby certify that on the 2nd day of October, 1969, I found evidence of the East Meander corner of Section 6 and 31 Township 37 and 38 North, Range 15 East, Fourth Principal Meridian, as described hereon; and that from this evidence I established a new monument and accessories as described hereon to perpetuate the original location of this corner:

## Description of original monument and accessories and subsequent restorations:

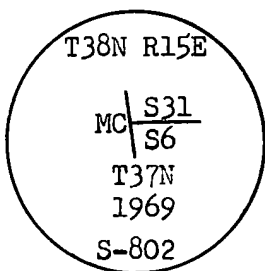
Township line surveyed in 1857 by Artemas Curtis.  
59.00 chains west between sections 6 and 31 set meander post.  
Yellow pine 12, bears N15W, 59 lks.  
Hemlock 14, bears S75E, 28 lks.

## Description of corner evidence found:

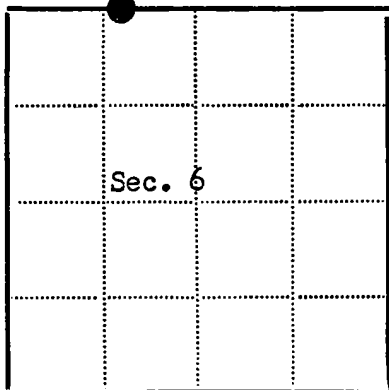
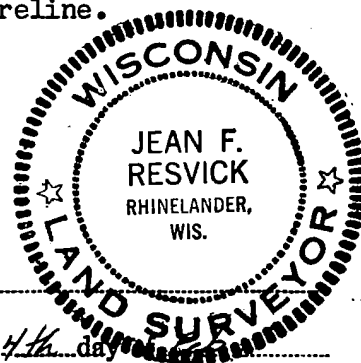
Yellow pine stump 3 feet tall, with lower blaze and scribed. At a bearing of S15E, a distance of 59 lks. from pine stump, corner falls in the edge of lake. From the point in edge of lake a rotten hemlock stump bears S75E, 28 lks.

## Description of monument and accessories I established to perpetuate the original location of this corner:

At a point, S15E a distance of 59 lks. from Yellow pine stump, set a 2 inch inside diameter galvanized wrought iron pipe 5 feet long, filled with concrete with brass cap marked.



From which the following new blazed and scribed bearing trees bear:  
A Hemlock 8, bears N30E, 3.83 feet or 5.803 lks.  
A Red pine 7, bears S61E, 16.37 feet or 24.803 lks.  
This corner is in the water at the edge of shoreline.



● = Corner monument restored

□ =

Resident witnesses.....

Dated at Rhinelander

Wisconsin, this 4th day1970...Signature Jean F. ResvickTitle Cadastral Surveyor

(County Surveyor, Registered Land Surveyor, or other duly authorized official)

Surveyors Registration No. S-802

DOCUMENT NO.

**98054**Office of Register of Deeds County of Forest

I hereby certify that the within instrument was filed in this office for record on the 22nd day of May, 1970, and was filed in Book No. A-2,3 Page No. A-2,3 of County Records.

Signature Eugene StasznyTitle Register of DeedsTownship 37 North, Range 15 EastSection 6Index No. A-2,3, Page No. A-2,3

43815310029

A  
23