

FILED ON:
06/06/2025 03:26 PM
CORTNEY BRITTEN CLEEREMAN
REGISTER OF DEEDS
FOREST COUNTY WI
PAGES: 1

U.S. PUBLIC LAND SURVEY
MONUMENT RECORD

NOTE: This form is intended and designed to fulfill all requirements of Wisconsin Administrative Code, Chapter A-E 7.08 U.S. Public Land Survey Monument Record (3) (a-i)

A-E 7.08(3)(a) Identity of corner:
Meander Corner South line Section 31,
EAST SIDE of peninsula - Van Zile Lake
Township 38 North, Range 15 East
of the Fourth Principal Meridian,
Town of Fence, Florence County, Wisconsin

WISCRS - FOREST COUNTY
N: 626,164.737 USft (XXX,XXX.XXX)
E: 894,300.291 USft (XXX,XXX.XXX)
Datum: NAD83 (2011)
GNSS Method RTK
GNSS Control WISCORS VRS

The coordinate value shown has been verified by the average of two or more GPS observations at a markedly different time. Coordinates shown in parenthesis are previously published values.

A-E 7.08(3)(b)

Original Surveyor: Artemas Curtis - October 1857
White Pine 12 - S 62° W, 33 Links, Spruce 5 - N 67° W, 8 Links

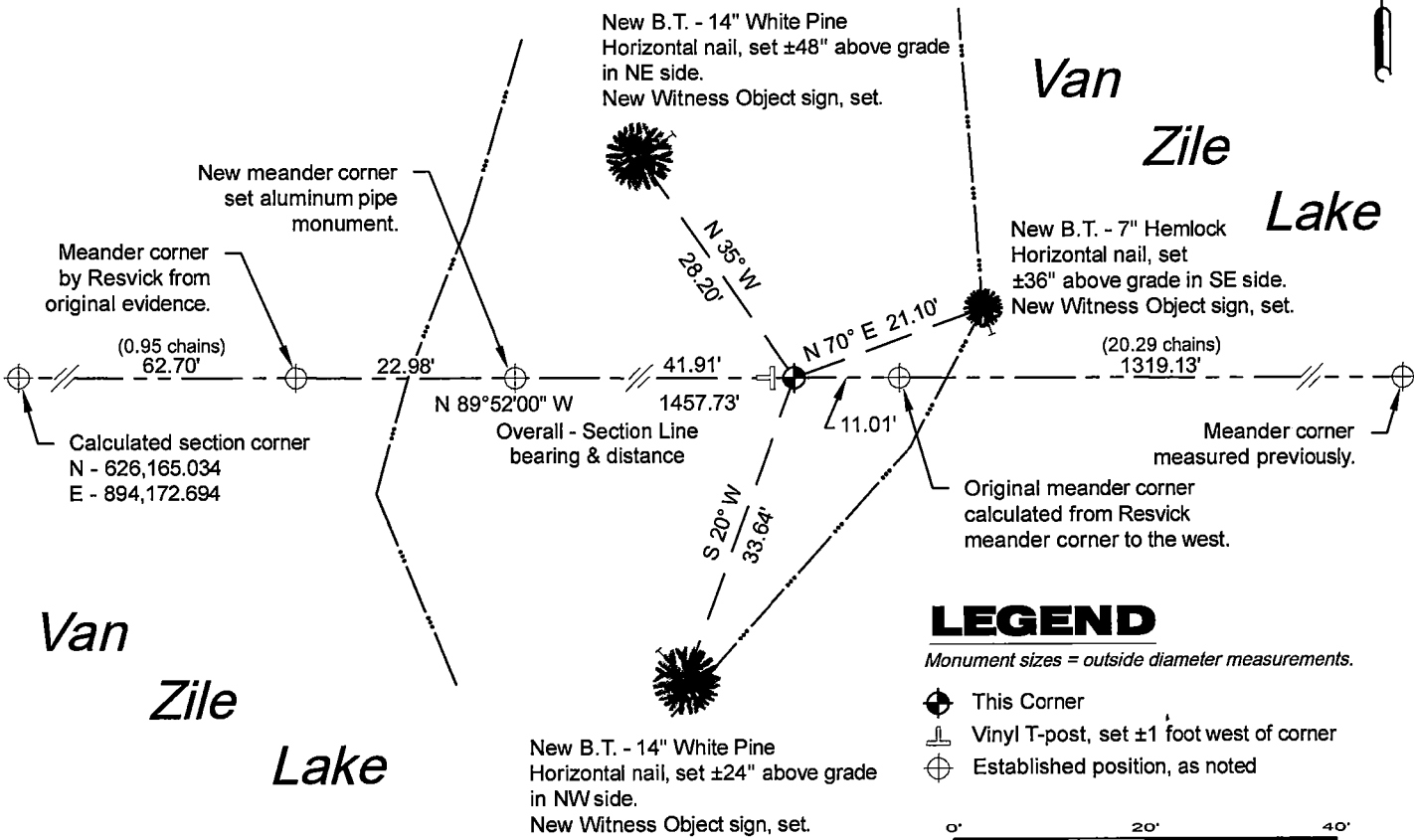
THENCE:

November 12, 2024 - In performing the 2024 - Forest County - "PLSS Corner Remonumentation and GPS Services" project, I made a careful search of the area and found no evidence of the original corner or subsequent evidence of the corner location. I did find Resvick's meander corner on the west side of the peninsula. The monument was laying on the lake bed in ±16" of water. The bottom end of the monument was near a pile of stones that measured N86°W, ±10.22 feet from a 20" white pine that has traces of red paint in the bark. In 1969, Resvick set this monument from original evidence, and witnessed the corner with a white pine, 17 ins. diam. S86°E, 10.22 ft.. I accepted the pile of stones on the lake bed as a perpetuation of the original meander corner.

March 13, 2025 - I set a 1" diameter X 32.5" long aluminum pipe - drivable monument with a 3.25" diameter aluminum cap stamped to identify the corner location. The monument is on land, and set on a line between the pile of stones, and the meander corner on the east side of Van Zile Lake. The monument is ±14' from the edge of water, and is flush with grade. I established 4 new reference monuments as shown below.

A-E 7.08(3)(c)(d) Plan view of corner with references to at least 4 witness monuments.

Bearings listed to the nearest second are referenced to the:
Wisconsin County Coordinate Reference System, FOREST County Zone.
All other bearings are magnetic.



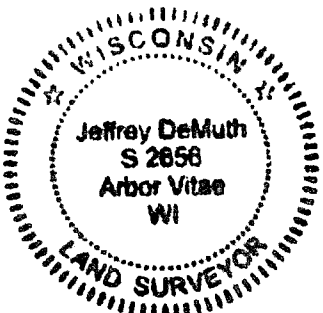
A-E 7.08(3)(e) 1857 Surveyor set a post. I set an aluminum pipe monument in 2025.

A-E 7.08(3)(f) I accept this monument in good faith as an ESTABLISHED WITNESS to the original corner.
A-E 7.08(3)(g)(h) This corner was not determined through lost-corner-proportionate methods.

A-E 7.08(3)(i) I, Jeffrey L. DeMuth, Professional Land Surveyor No. S-2656, hereby certify that the corner location on this record was determined by me or under my direction and control, and that this U.S. Public Land Survey Monument Record is correct and complete to the best of my knowledge, and belief.

SIGNATURE

March 14, 2025
DATE



43815310036

43815310036

21

CERTIFIED LAND CORNER RESTORATION

State of Wisconsin

County of Forest

ss.

I Jean Resvick, do hereby certify that on the 2nd. day of October, 1969, I found evidence of the VanZile Lake West side of Point M.C. corner of Section 6 Township 37 N, Range 15 E, Fourth Principal Meridian, as described hereon; and that from this evidence I established a new monument and accessories as described hereon to perpetuate the original location of this corner:

Description of original monument and accessories and subsequent restorations:

Township lines surveyed in 1857 by Artemus Curtis. 80.43 ch. west between Section 6 and 31. Set post for Meander Corner.

Tamarack 6 ins. bears N46°E 41 lks.

Spruce 5 ins. bears S77°E 21 lks.

Description of corner evidence found:

Tamarack stump. 6 ins. when blazed. Lower part of blaze has overgrowth with ax notch as were made on scribed faces. The rest of the blaze has been sawed off. Point from this stump agrees with distance across point.

Description of monument and accessories I established to perpetuate the original location of this corner:

At a point S46°W, 27.06 ft. from tamarack stump set a 2 in. inside diameter galvanized wrought iron pipe, 5 ft. long filled with concrete with a brass cap marked:

From which the following new blazed and scribed bearing trees bear.

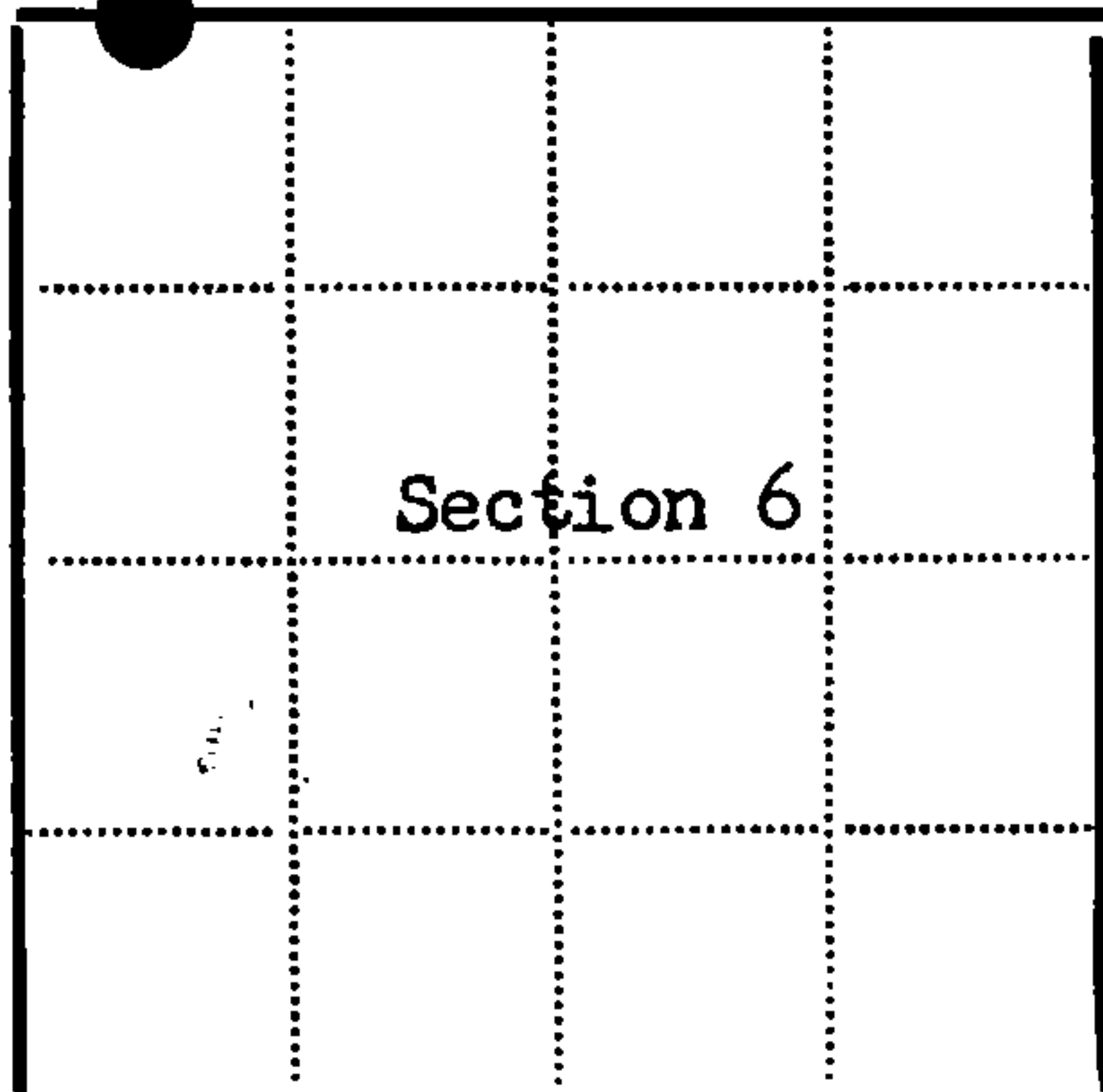
A white pine, 17 ins. diam., bears S86°E, 10.22 ft. or 15.485 lks.

A black spruce 4 ins. diam., bears S39°E, 17.01 ft. or 25.772 lks.

T38N R15E

S31
M.C/S 6
T37N
1969
S-802

Corner is on the edge of shore in water, rocks are piled around pipe.



● = Corner monument restored

□ =

Resident witnesses

Dated at Rhinelander Wisconsin, this 2nd day of October, 1969.

Signature Jean F. Resvick Title Cadastral Surveyor
(County Surveyor, Registered Land Surveyor, or other duly authorized official)

Surveyors Registration No. S-802 DOCUMENT No. 98053

Office of Register of Deeds County of Forest

I hereby certify that the within instrument was filed in this office for record on the 22nd day of May, 1970, and was filed in Book No. Page No. A-1,2 of County Records.

Signature Eugene Stetson Title Register of Deeds

Township 37 North, Range 15 East, Section 6, Index No. A-1,2, Page No.

43815310036

A 12