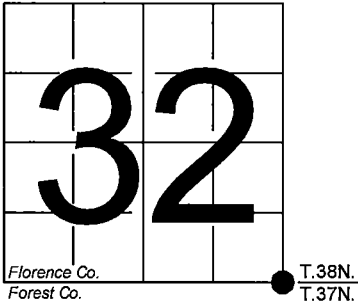


U. S. PUBLIC LAND SURVEY MONUMENT RECORD

NOTE: This form is intended and designed to fulfill all requirements of Wisconsin Administrative Code, Chapter A-E 7.08 U.S. Public Land Survey Monument Record (3) (a-i)

A-E 7.08(3)(a) Identity of corner:  
Southeast Corner Section 32,  
Township 38 North, Range 15 East  
of the Fourth Principal Meridian,  
Town of Fence, Florence County,  
Wisconsin

WISCRS - FOREST COUNTY  
N: 626,113.141 USft (XXX,XXX.XXX)  
E: 904,778.055 USft (XXX,XXX.XXX)  
Datum: NAD83 (2011)  
GNSS Method RTK  
GNSS Control WISCORS VRS



The coordinate value shown has been verified by the average of two or more GPS observations at a markedly different time. Coordinates shown in parenthesis are previously published values.

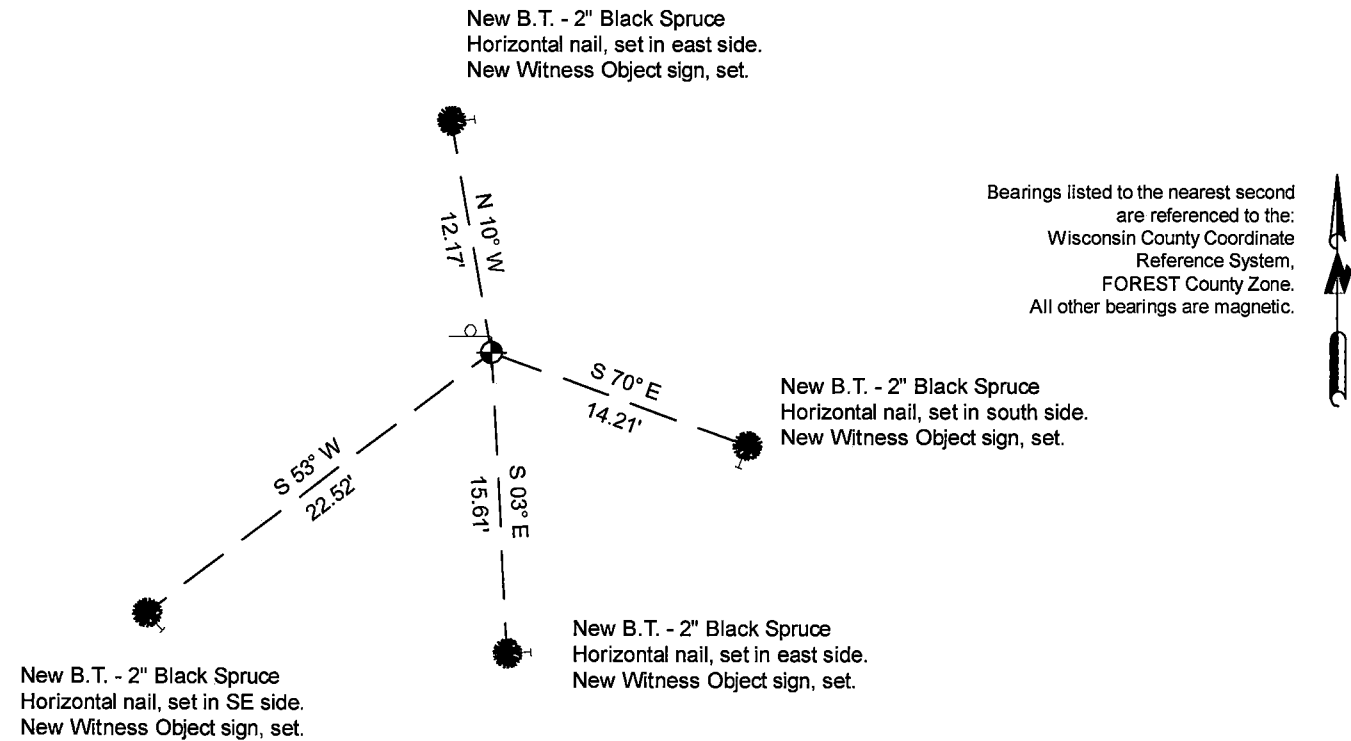
A-E 7.08(3)(b)

Original Surveyor: Artemas Curtis - September 1857 to October 1857  
Tamarac 12 - N 89°30' W, 612 Links, Tamarac 10 - S 84°10' W, 605 Links

See previous U.S.Public Land Survey Monument Record - A-9 - March 26, 1985 - Surveyor 1107 - William B. Cochrane - THENCE:

May 15, 2024 - In performing the 2024 - Forest County - "PLSS Corner Remonumentation and GPS Services" project, I found a 2.25" diameter galvanized iron pipe with a 2.9" diameter stamped brass cap. The monument is in a black spruce swamp, and flush with grade. I did not find any of Cochran's bearing trees. I established 4 new reference monuments as shown below.

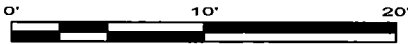
A-E 7.08(3)(c)(d) Plan view of corner with references to at least 4 witness monuments.



LEGEND

Monument sizes = outside diameter measurements.

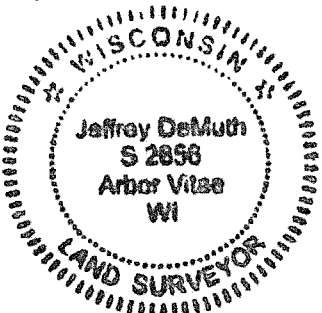
- ⊕ This Corner
- Steel sign post, found ±.5 foot NW of Corner
- Galvanized nail, set or nail found as shown



A-E 7.08(3)(e) 1857 Surveyor set a post, 1985 Surveyor found a 2" inside diameter galvanized iron pipe, with a brass cap stamped to identify corner. I found a 2.25" diameter galvanized iron pipe with a 2.9" diameter stamped brass cap in 2024.

A-E 7.08(3)(f) I accept this monument in good faith as a FOUND PERPETUATED LOCATION of the corner.  
A-E 7.08(3)(g)(h) This corner was not determined through lost-corner-proportionate methods.

A-E 7.08(3)(i) I, Jeffrey L. DeMuth, Professional Land Surveyor No. S-2656, hereby certify that the corner location on this record was determined by me or under my direction and control, and that this U.S. Public Land Survey Monument Record is correct and complete to the best of my knowledge, and belief.



SIGNATURE

November 11, 2024  
DATE

## CERTIFIED LAND CORNER RESTORATION

State of Wisconsin

County of Forest

SS.

I, Jean F. Resvick, do hereby certify that on the 20th day of October, 1972, I found evidence of the Northwest Section corner of Section 4 Township 37 North, Range 15 East, Fourth Principal Meridian, as described hereon; and that from this evidence I established a new monument and accessories as described hereon to perpetuate the original location of this corner:

## Description of original monument and accessories and subsequent restorations:

Surveyed in 1857 by Artemas Curtis  
80.00 chains west between sec. 4 and 33 set post.  
Tamarack 10, S84°10'W, 605 lks.  
Tamarack 12, N89°30'W, 612 lks.  
East, 9.41 chains, W. pine 8 inches  
East, 9.41 chains leave swamp bears NW, SE  
West, 8.00 chains leave swamp bears SE

## Description of corner evidence found:

Tamarack snag, scribing and reversed impression readable in both upper and lower blaze.  
Tamarack fallen, blazed but no scribing remains. White pine stump on east edge of swamp. 2x2 spruce post about 10 years old, rotten off at ground. Bearing and distances as recorded for bearing trees are impossible from remains found. The original bearings being recorded to the minute I assume that they were computed from offsets from the 6 chain mark west of corner on line. By assuming that the distance should have been 6 chains minus 12 lks. not plus and that the offset to the south was 37 lks. not 62 lks. or a 25 lks. error the two position from the two, bearing trees become a common point agreeing with the swamp calls East and West.

## Description of monument and accessories I established to perpetuate the original location of this corner:

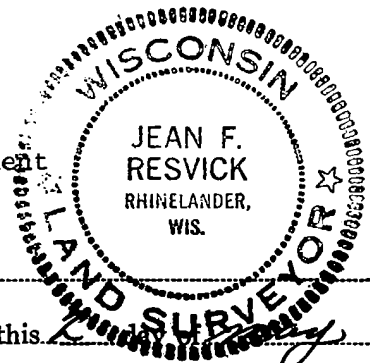
At a point S89°30'E, 588 lks. and N86°30'E, 605 lks. from the bearing tree remains found and 9.4 chains, west of white pine stump on edge of swamp set a 2 inch inside diameter, galvanized iron pipe, 5 feet long, filled with concrete with brass cap stamped:

T38N R15E

S32|S33  
S5|S4  
T37N  
1972  
S-802

From which the following new blazed scribed bearing trees bear:

Black Spruce 3, N22E, 49.17 ft.  
Black Spruce 3, N82E, 36.29 ft.  
Black Spruce 3, S33W, 95.86 ft.  
Black Spruce 4, N33W, 90.81 ft.  
Set steel sign post on north side of monument  
No trees in SE quadrant.



Resident witnesses

Dated at Rhinelander Wisconsin, this 20th day of October, 1972.

Signature Jean F. Resvick Title Land Surveyor  
(County Surveyor, Registered Land Surveyor, or other duly authorized official)

Surveyors Registration No.

DOCUMENT NUMBER

104439

Office of Register of Deeds County of Forest

I hereby certify that the within instrument was filed in this office for record on the 13th day of November, 1973, and was filed in Book No. 43815320000 Page No. A-9 of County Records.

Signature Eugene Lutz Title Register of Deeds

Township 37 North, Range 15 East, Section 4, Index No. A-9, Page No.

43815320000

A 9

U.S. PUBLIC LAND SURVEY MONUMENT RECORD

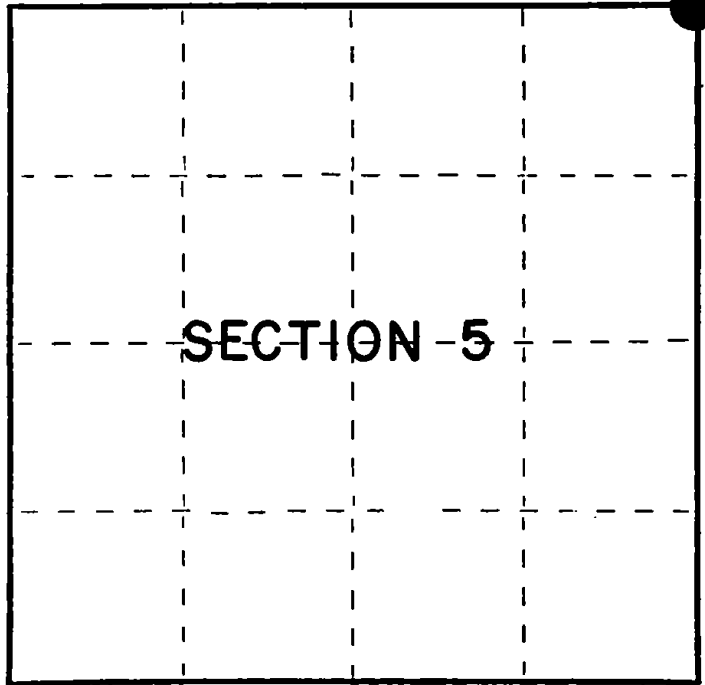
Index No. **A-9**

State of Wisconsin }  
County of Forest } ss.

I William B. Cochrane, do hereby  
certify that on the 27th day  
of February, 19 85, I found  
evidence of the Northeast Section  
corner of Section 5  
Township 37, North, Range  
15 East, Fourth Principal Meridian,  
as described hereon; and that from this evidence  
I established a new monument and accessories  
as described hereon to perpetuate the original  
location of this corner.

Resident witnesses:

David Brownell



○ = Corner monument restored.

History of original corner establishment:

Original Government Survey in 1857 by Artemas Curtis. In 1972, Jean Resvick, a Land Surveyor with the U.S. Forest Service, found original bearing tree evidence. From evidence, set a 2" diameter galvanized iron pipe, 5 feet long, with a brass cap stamped: T38N R15E, S4, S5, S32, S33, T37N, 1972, S-802. From which the following bear:

B. Spruce	3"	N22°E	49.17 feet
B. Spruce	3"	N82°E	36.29 feet
B. Spruce	3"	S33°W	95.86 feet
B. Spruce	4"	N33°W	90.81 feet

Description of corner evidence found:

Monument as described and in place, from which the following bear:

B. Spruce (Dead)	4"	N22°E	49.17 feet
B. Spruce	4"	N82°E	36.29 feet
B. Spruce	4"	S33°W	95.86 feet
B. Spruce	5"	N33°W	90.81 feet

Description of monument and accessories I established to perpetuate the original location of this corner.

Steel Sign Post	NW	0.50 feet
-----------------	----	-----------

Dated at Hiles, Wis., this 26th day of March, 19 85

Signature William B. Cochrane Title Land Surveyor Registration No. S-1107  
(County Surveyor, Registered Land Surveyor, or other duly authorized official)

Office of Register of Deeds, County of Forest, I hereby certify that the within  
instrument was filed in this office for record on the 24th day of April, 19 85  
at 1:00 o'clock P. M.

Paul Aschenbrenner  
(Register of Deeds)

By \_\_\_\_\_ Deputy

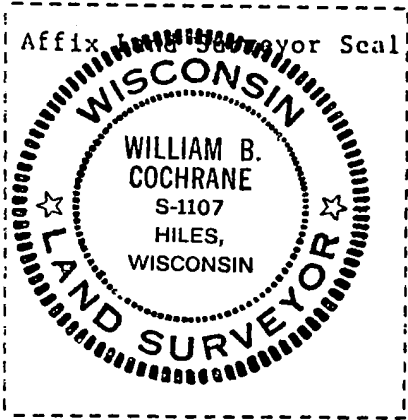
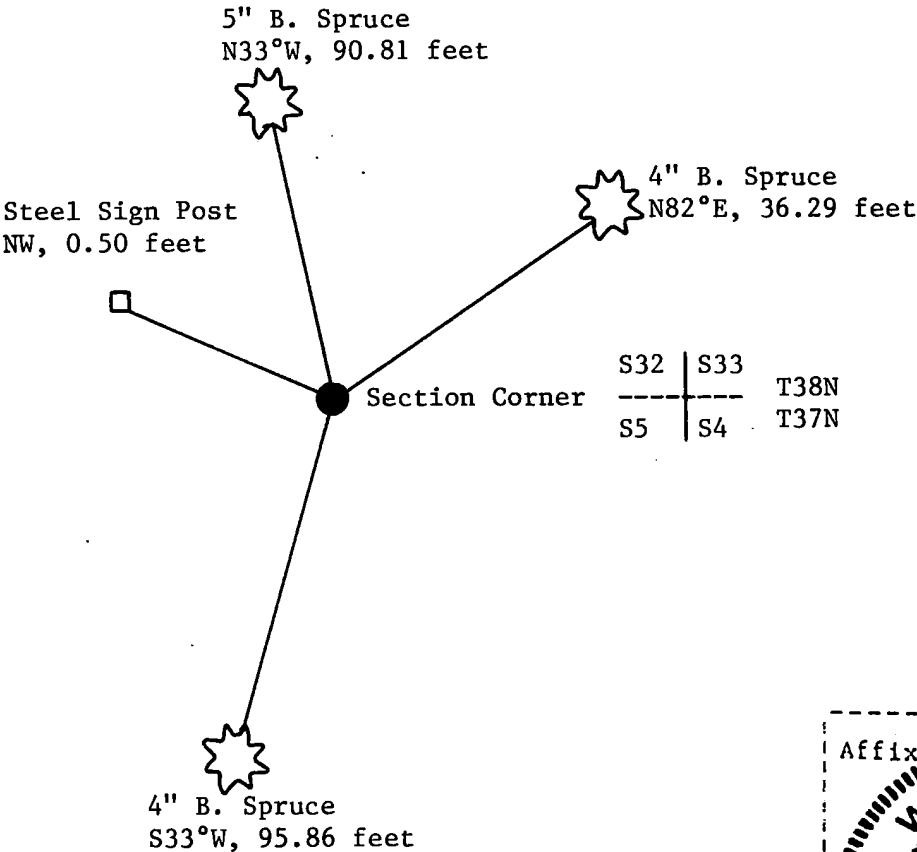
(e) Describe any material discrepancy between the location of the corner as restored or reestablished and the location of that corner as previously restored or reestablished by distance and direction. Show the discrepancy on the plan view drawing under (d), above. Show the distances between the corner as previously restored or reestablished and (1) the corner as restored or reestablished, and (2) to at least 2 of the witness monuments shown on the drawing in (d), above.

See drawing below.

(f) Was the corner restored through acceptance of (1) an obliterated evidence location, or, (2) a found perpetuated location?

Restored through acceptance of a found perpetuated location.

(g&h) Was the corner reestablished through lost corner proportionate methods? If so, show the method, including the directions and distances to other public land survey corners used as evidence or used for proportioning in determining the corner location?



(i) I, William B. Cochrane  
(type or print name) certify that the corner location shown on this record was determined by me or under my direction and control and that this U.S. Public Land Survey Monument Record is correct and complete to the best of my knowledge and belief.

William B. Cochrane  
Signature

March 26, 1985  
Date