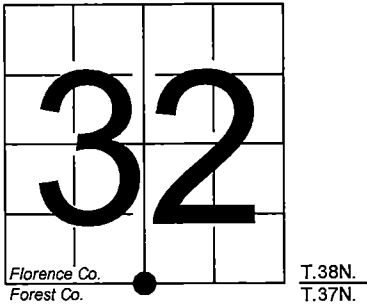


U. S. PUBLIC LAND SURVEY MONUMENT RECORD

NOTE: This form is intended and designed to fulfill all requirements of Wisconsin Administrative Code, Chapter A-E 7.08 U.S. Public Land Survey Monument Record (3) (a-i)

A-E 7.08(3)(a) Identity of corner:  
South 1/4 Corner Section 32,  
Township 38 North, Range 15 East  
of the Fourth Principal Meridian,  
Town of Fence, Florence County,  
Wisconsin

WISCRS - FOREST COUNTY  
N: 626,130.580 USft (XXX,XXX.XXX)  
E: 902,144.770 USft (XXX,XXX.XXX)  
Datum: NAD83 (2011)  
GNSS Method RTK  
GNSS Control WISCORS VRS



The coordinate value shown has been verified by the average of two or more GPS observations at a markedly different time. Coordinates shown in parenthesis are previously published values.

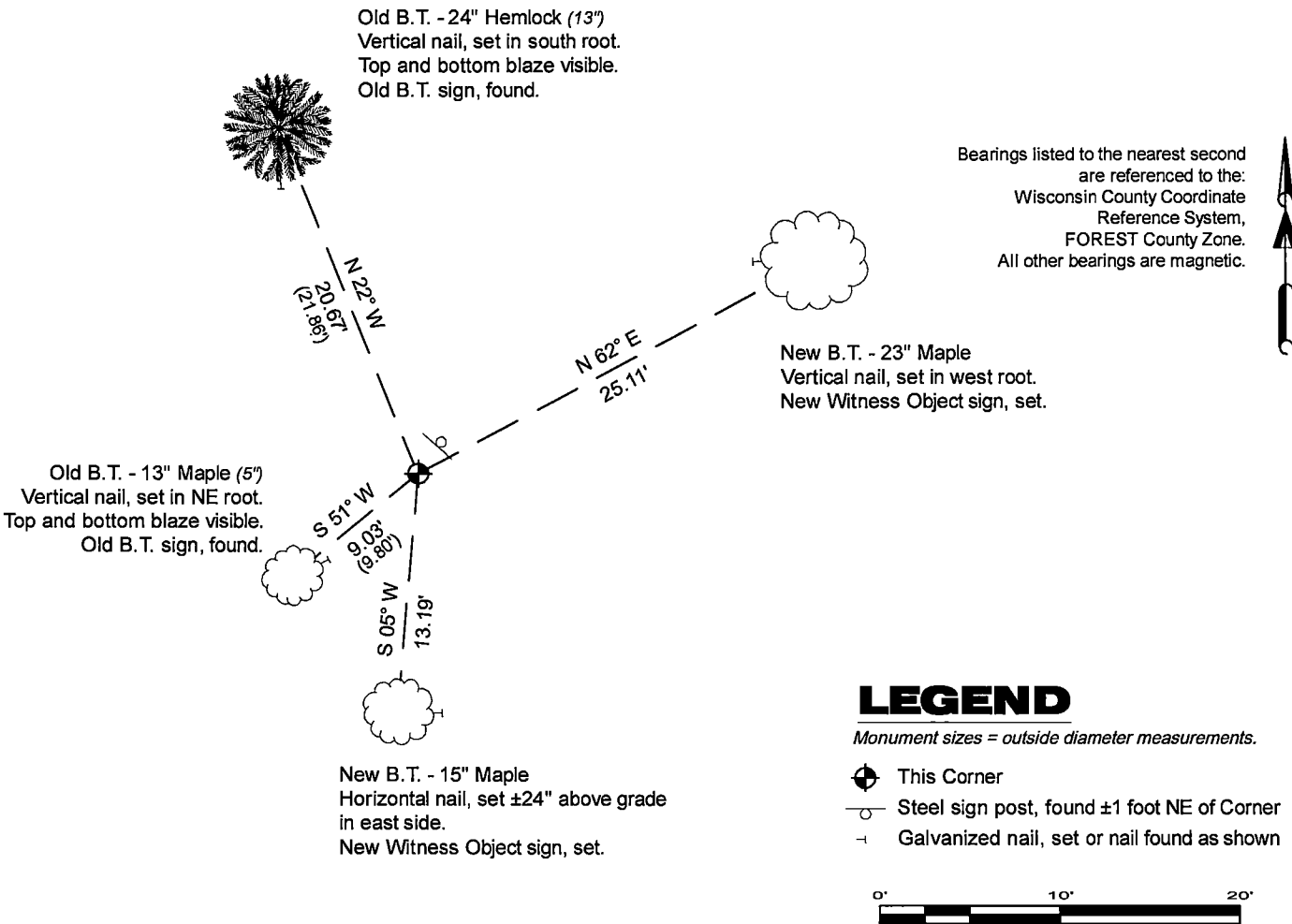
A-E 7.08(3)(b)

Original Surveyor: Artemas Curtis - September 1857 to October 1857  
Sugar 18 - N 9° W, 29 Links, Sugar 12 - S 35° E, 58 Links

See previous U.S. Public Land Survey Monument Record - A-7 - April 2, 1985 - Surveyor 1107 - William B. Cochrane - THENCE:

November 06, 2024 - In performing the 2024 - Forest County - "PLSS Corner Remonumentation and GPS Services" project, I found a 2.25" diameter aluminum pipe with a 3.25" diameter stamped aluminum cap. The monument is in an open hardwood forest, and extends ±12" above grade. I also found 2 of Cochrane's bearing trees alive and in good condition. I established 2 new reference monuments as shown below.

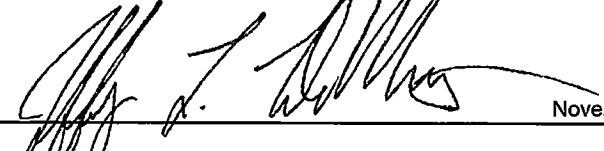
A-E 7.08(3)(c)(d) Plan view of corner with references to at least 4 witness monuments.

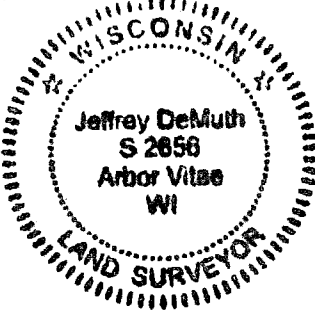


A-E 7.08(3)(e) 1857 Surveyor set a post, 1985 Surveyor set a 2" diameter aluminum pipe monument, with an aluminum cap stamped to identify corner. I found a 2.25" diameter aluminum pipe with a 3.25" diameter stamped aluminum cap in 2024.

A-E 7.08(3)(f) I accept this monument in good faith as a FOUND PERPETUATED LOCATION of the corner.  
A-E 7.08(3)(g)(h) This corner was previously determined through lost-corner-proportionate methods.

A-E 7.08(3)(i) I, Jeffrey L. DeMuth, Professional Land Surveyor No. S-2656, hereby certify that the corner location on this record was determined by me or under my direction and control, and that this U.S. Public Land Survey Monument Record is correct and complete to the best of my knowledge, and belief.

SIGNATURE  DATE November 11, 2024



U.S. PUBLIC LAND SURVEY MONUMENT RECORD

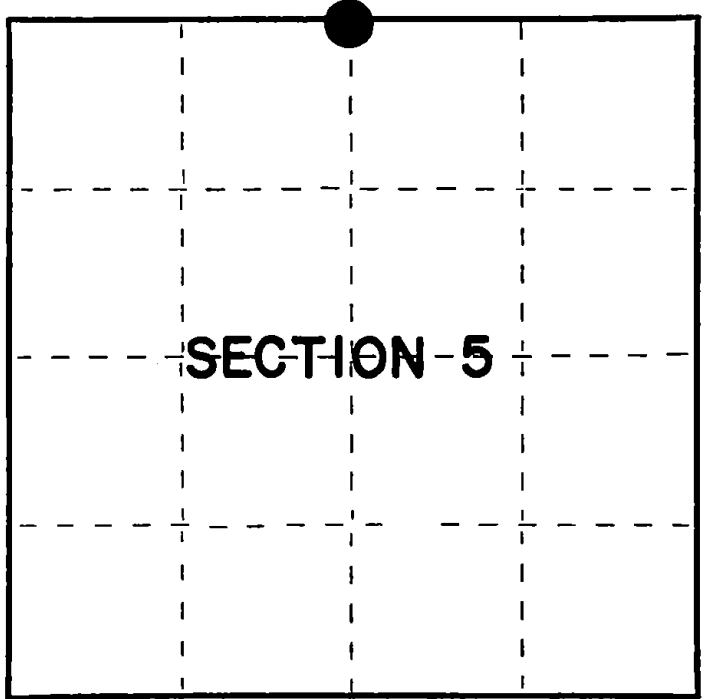
Index No. **A-7**

State of Wisconsin }  
County of Forest } ss.

I William B. Cochrane, do hereby  
certify that on the 16th day  
of August, 1983, I found  
evidence of the North Quarter  
corner of Section 5  
Township 37, North, Range  
15 East, Fourth Principal Meridian,  
as described hereon; and that from this evidence  
I established a new monument and accessories  
as described hereon to perpetuate the original  
location of this corner.

Resident witnesses:

Tony Tillman



○ = Corner monument restored.

History of original corner establishment:

Original Government Survey in 1857 by Artemas Curtis. West between Sections 5 and 32,  
40.00 chains, set Quarter Corner post to Sections 5 and 32, from which the  
following bear:

Sugar	18"	N 9°W	29 lks.
Sugar	12"	S35°E	58 lks.

Description of corner evidence found:

The corner position was restored at proportionate distance and on line, between  
the Northeast and Northwest Section Corners of Section 5.

No original corner evidence was recovered.

Description of monument and accessories I established to perpetuate the original location of this corner.  
At the restored corner position, set a 2" diameter aluminum pipe monument, 3 feet long,  
30 inches in the ground, with an aluminum cap stamped: T38N R15E, 1/4, S5, S32, T37N,  
1983, S-1107. From which the following new blazed and scribed bearing trees bear:

Maple	5"	S51°W,	9.80 feet
Hemlock	13"	N22°W	21.86 feet
Steel Sign Post		NE	1.00 feet

Dated at Hiles, Wis., this 2nd day of April, 1985

Signature William B. Cochrane Title Land Surveyor Registration No. S-1107  
(County Surveyor, Registered Land Surveyor, or other duly authorized official)

Office of Register of Deeds, County of Forest, I hereby certify that the within  
instrument was filed in this office for record on the 24th day of April, 1985  
at 1:00 o'clock P. M.

Paul Aschenbrenner  
(Register of Deeds)

By \_\_\_\_\_ Deputy

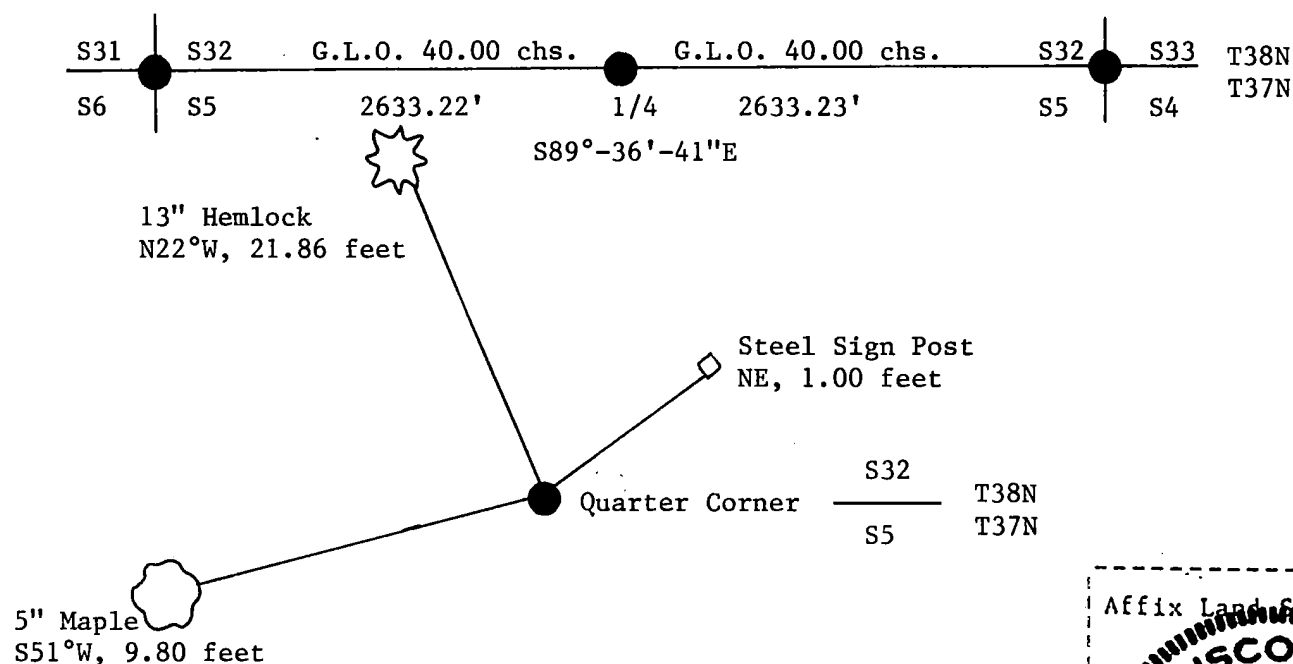
- (e) Describe any material discrepancy between the location of the corner as restored or reestablished and the location of that corner as previously restored or reestablished by distance and direction. Show the discrepancy on the plan view drawing under (d), above. Show the distances between the corner as previously restored or reestablished and (1) the corner as restored or reestablished, and (2) to at least 2 of the witness monuments shown on the drawing in (d), above.

See drawing below.

- (f) Was the corner restored through acceptance of (1) an obliterated evidence location, or, (2) a found perpetuated location?

Restored through lost corner proportionate methods.

- (g&h) Was the corner reestablished through lost corner proportionate methods? If so, show the method, including the directions and distances to other public land survey corners used as evidence or used for proportioning in determining the corner location?



- (i) William B. Cochran  
(type or print name) certify that the corner location shown on this record was determined by me or under my direction and control and that this U.S. Public Land Survey Monument Record is correct and complete to the best of my knowledge and belief.

Signature William B. Cochrane Date April 2, 1985

