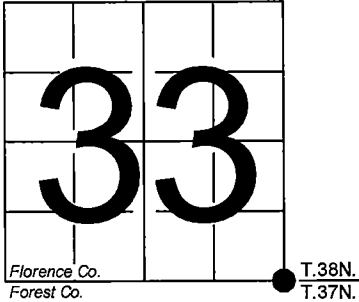


U. S. PUBLIC LAND SURVEY MONUMENT RECORD

NOTE: This form is intended and designed to fulfill all requirements of Wisconsin Administrative Code, Chapter A-E 7.08 U.S. Public Land Survey Monument Record (3) (a-i)

A-E 7.08(3)(a) Identity of corner:  
Southeast Corner Section 33,  
Township 38 North, Range 15 East  
of the Fourth Principal Meridian,  
Town of Fence, Florence County,  
Wisconsin

WISCRS - FOREST COUNTY  
N: 626,127.835 USft (XXX,XXX.XXX)  
E: 910,021.035 USft (XXX,XXX.XXX)  
Datum: NAD83 (2011)  
GNSS Method RTK  
GNSS Control WISCORS VRS



The coordinate value shown has been verified by the average of two or more GPS observations at a markedly different time. Coordinates shown in parenthesis are previously published values.

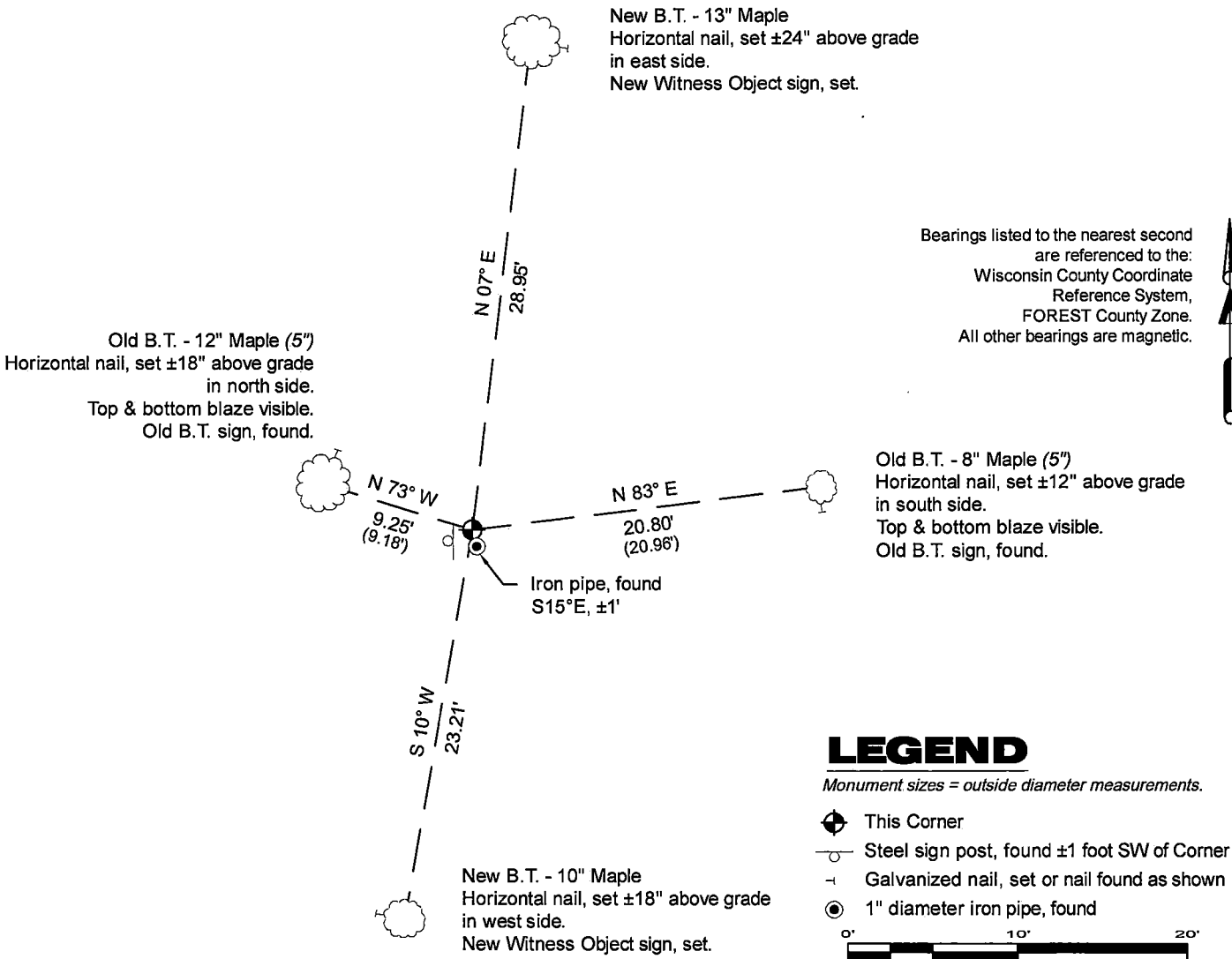
A-E 7.08(3)(b)

Original Surveyor: Artemas Curtis - September 1857 to October 1857  
Sugar 14 - N 13° W, 50 Links, Elm 12 - N 6° E, 15 Links, Sugar 16 - S 56° E, 44 Links, Sugar 14 - S 55° W 40 Links

See previous U.S.Public Land Survey Monument Record - A-13 - March 12, 1985 - Surveyor 1107 - William B. Cochrane - THENCE:

May 15, 2024 - In performing the 2024 - Forest County - "PLSS Corner Remonumentation and GPS Services" project, I found a 2.25" diameter galvanized iron pipe with a 2.9" diameter stamped brass cap. The monument is high ground ±200' south of a woods trail, and extends ±16" above grade. I also found 2 of Resvick's bearing trees alive and in good condition. I set nails in the existing reference monuments and established 2 new reference monuments as shown below.

A-E 7.08(3)(c)(d) Plan view of corner with references to at least 4 witness monuments.



A-E 7.08(3)(e) 1857 Surveyor set a post, 1985 Surveyor found a 2" inside diameter galvanized wrought iron pipe, with a brass cap stamped to identify corner. I found a 2.25" diameter galvanized iron pipe with a 2.9" diameter stamped brass cap in 2024.

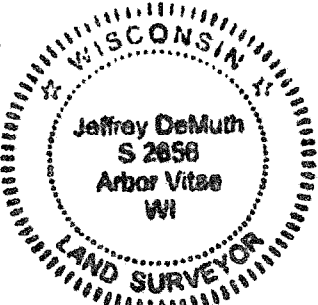
A-E 7.08(3)(f) I accept this monument in good faith as a FOUND PERPETUATED LOCATION of the corner.  
A-E 7.08(3)(g)(h) This corner was not determined through lost-corner-proportionate methods.

A-E 7.08(3)(i) I, Jeffrey L. DeMuth, Professional Land Surveyor No. S-2656, hereby certify that the corner location on this record was determined by me or under my direction and control, and that this U.S. Public Land Survey Monument Record is correct and complete to the best of my knowledge, and belief.

SIGNATURE

November 11, 2024

DATE



43815330000

43815330000

A13

# CERTIFIED LAND CORNER RESTORATION

State of Wisconsin

County of Forest

ss.

I, Jean F. Resvick, do hereby certify that on the 14th day of August, 1972, I found evidence of the Northwest Section corner of Section 3 Township 37 North, Range 15 East, Fourth Principal Meridian, as described hereon; and that from this evidence I established a new monument and accessories as described hereon to perpetuate the original location of this corner:

## Description of original monument and accessories and subsequent restorations:

Surveyed in 1857 by Artemas Curtis. 80.0 chains West between Sections 3 and 34 and set post.

Sugar 14, bears N13W, 50 lks.  
Elm, 12, bears N 6E, 15 lks.  
Sugar 16, bears S56E, 44 lks.  
Sugar 14, bears S55W, 40 lks.

## Description of corner evidence found:

Point of old wood post from which:

Sugar stump bears N13W, 50 lks.

Elm stump, 24", recently cut, bears N6E, 15 lks. No scribing visible center is rotten

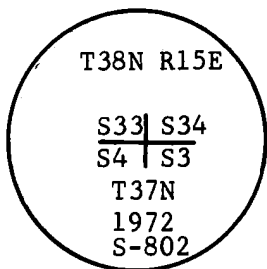
Sugar stump hole, bears S56E, 44 lks.

Sugar stump hole, bears S55W, 40 lks.

1/2 in. diam. steel pipe bears S15E, 1.5 lks.

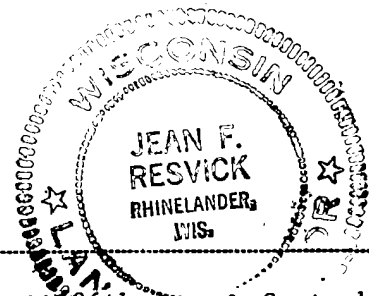
## Description of monument and accessories I established to perpetuate the original location of this corner:

Replaced post point found with a 2 inch inside diameter, galvanized wrought iron pipe, 5 feet long, filled with concrete with a brass cap stamped:



From which the following blazed and scribed new bearing trees bear:

Maple, 5", N83E, 20.96 feet  
Hemlock 14", S9E, 25.24 feet  
Hemlock 8", S76W, 28.14 feet  
Maple, 5", N73W, 9.18 feet  
Iron post, SW, 1.0 feet



Resident witnesses

Dated at Rhinelander Wisconsin, this 26th day of September 1972.

Signature Jean F. Resvick Title Land Surveyor  
(County Surveyor, Registered Land Surveyor, or other duly authorized official)

Surveyors Registration No. S-802

Office of Register of Deeds County of Forest  
I hereby certify that the within instrument was filed in this office for record on the 18th day of October 9:30 AM 1972, and was filed in Book No. I Page No. A-13 of County Records.

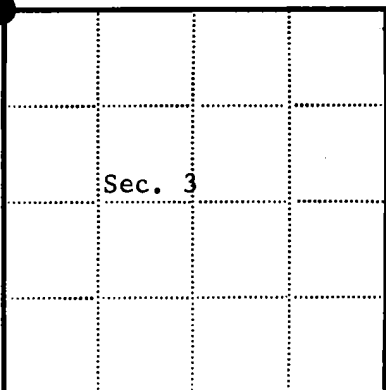
Signature Eugene Stetson Title Register of Deeds

Township 37 North, Range 15 East, Section 3, Index No. A-13, Page No.

43815330000

DOCUMENT NUMBER 102401

A 13



● = Corner monument restored

□ =

U.S. PUBLIC LAND SURVEY MONUMENT RECORD

Index No. **A-13**

State of Wisconsin }  
County of Forest } ss.

I William B. Cochrane, do hereby  
certify that on the 27th day  
of February, 1985, I found  
evidence of the Northeast Section  
corner of Section 4  
Township 37, North, Range  
15 East, Fourth Principal Meridian,  
as described hereon; and that from this evidence  
I established a new monument and accessories  
as described hereon to perpetuate the original  
location of this corner.

Resident witnesses:

David Brownell

History of original corner establishment:

Original Government Survey in 1857 by Artemas Curtis. In 1972, Jean Resvick, a Land Surveyor with the U.S. Forest Service, found a post point in concurrence with original B.T. evidence. In place of post point, set a 2" diameter galvanized iron pipe, 5 feet long, with a brass cap stamped: T38N R15E, S3, S4, S33, S34, T37N, 1972, S-802. From which the following bear:

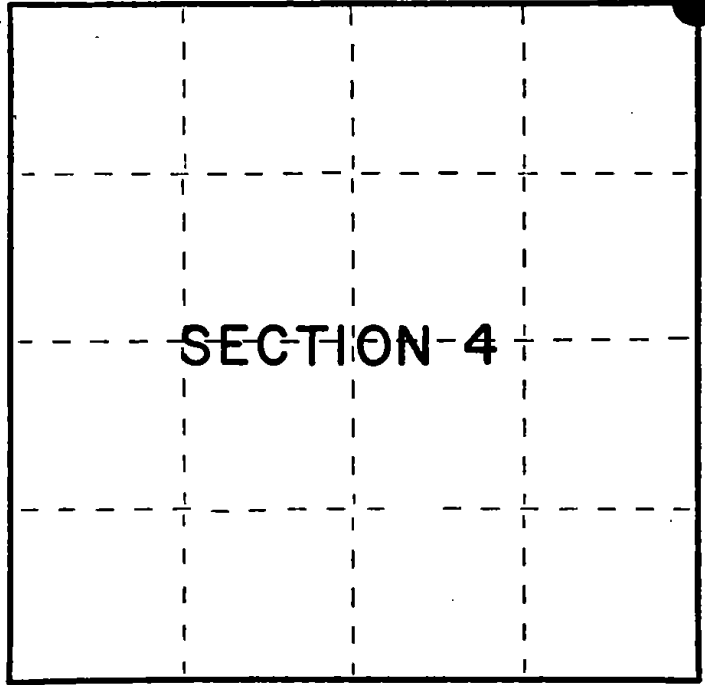
Maple	5"	N83°E	20.96 feet	
Hemlock	14"	S 9°E	25.24 feet	
Hemlock	8"	S76°W	28.14 feet	
Maple	5"	N73°W	9.18 feet	Iron sign post, SW, 1.00 feet

Description of corner evidence found:

Monument as described and in place, from which the following bear:

Maple	6"	N83°E	20.96 feet	
Hemlock	15"	S 9°E	25.24 feet	
Hemlock	8"	S76°W	28.14 feet	
Maple	9"	N73°W	9.18 feet	
Iron Sign post		SW	1.00 feet	

Description of monument and accessories I established to perpetuate the original location of this corner.  
None



○ = Corner monument restored.

Dated at Hiles, Wis., this 12th day of March, 1985  
Signature William B. Cochrane Title Land Surveyor Registration No. S-1107  
(County Surveyor, Registered Land Surveyor, or other duly authorized official)

Office of Register of Deeds, County of Forest, I hereby certify that the within  
instrument was filed in this office for record on the 24th day of April, 1985  
at 1:00 o'clock P. M.

Paul Aschenbrenner  
(Register of Deeds)

By \_\_\_\_\_ Deputy

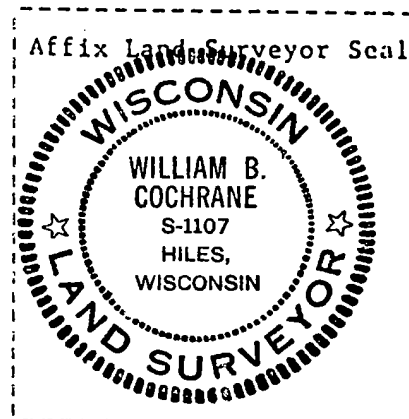
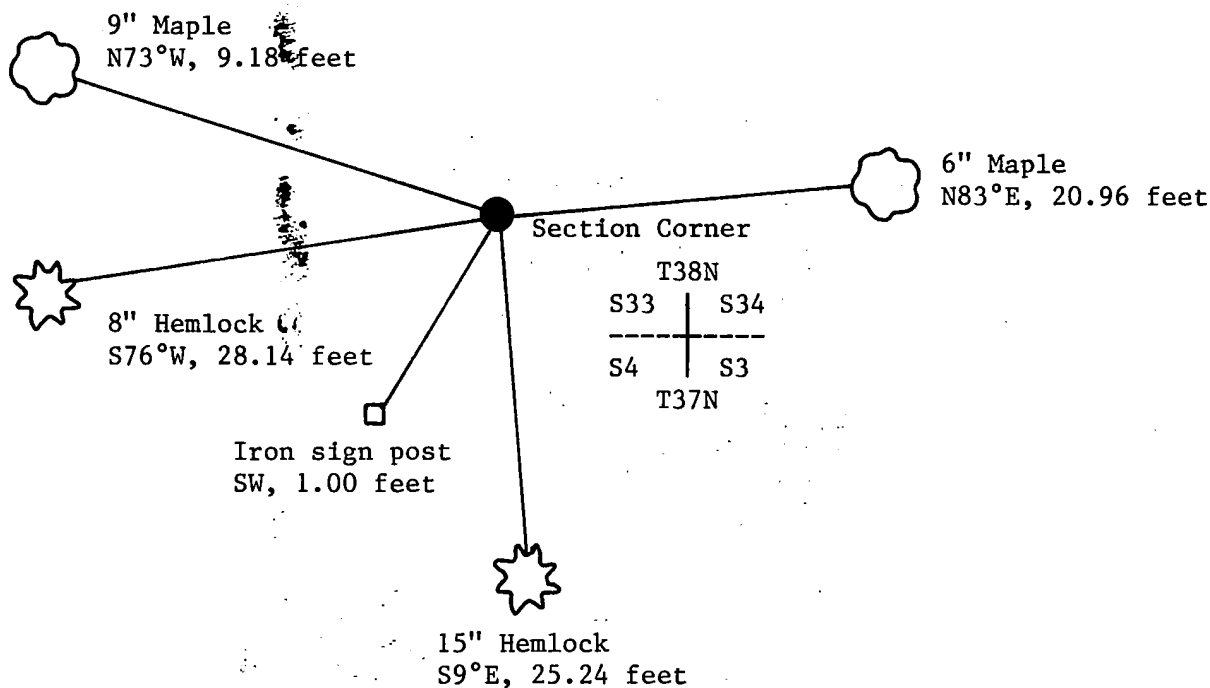
(e) Describe any material discrepancy between the location of the corner as restored or reestablished and the location of that corner as previously restored or reestablished by distance and direction. Show the discrepancy on the plan view drawing under (d), above. Show the distances between the corner as previously restored or reestablished and (1) the corner as restored or reestablished, and (2) to at least 2 of the witness monuments shown on the drawing in (d), above.

See drawing below.

(f) Was the corner restored through acceptance of (1) an obliterated evidence location, or, (2) a found perpetuated location?

Restored through acceptance of a found perpetuated location.

(g&h) Was the corner reestablished through lost corner proportionate methods? If so, show the method, including the directions and distances to other public land survey corners used as evidence or used for proportioning in determining the corner location?



(i) I, William B. Cochrane  
(type or print name) certify that the corner location shown on this record was determined by me or under my direction and control and that this U.S. Public Land Survey Monument Record is correct and complete to the best of my knowledge and belief.

William B. Cochrane March 18, 1985  
Signature Date