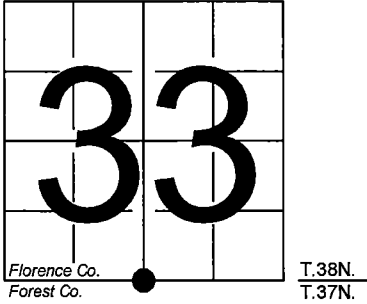


U. S. PUBLIC LAND SURVEY MONUMENT RECORD

NOTE: This form is intended and designed to fulfill all requirements of Wisconsin Administrative Code, Chapter A-E 7.08 U.S. Public Land Survey Monument Record (3) (a-i)

A-E 7.08(3)(a) Identity of corner:
South 1/4 Corner Section 33,
Township 38 North, Range 15 East
of the Fourth Principal Meridian,
Town of Fence, Florence County,
Wisconsin

WISCRS - FOREST COUNTY
N: 626,120.614 USft (XXX,XXX.XXX)
E: 907,399.368 USft (XXX,XXX.XXX)
Datum: NAD83 (2011)
GNSS Method RTK
GNSS Control WISCORS VRS



The coordinate value shown has been verified by the average of two or more GPS observations at a markedly different time. Coordinates shown in parenthesis are previously published values.

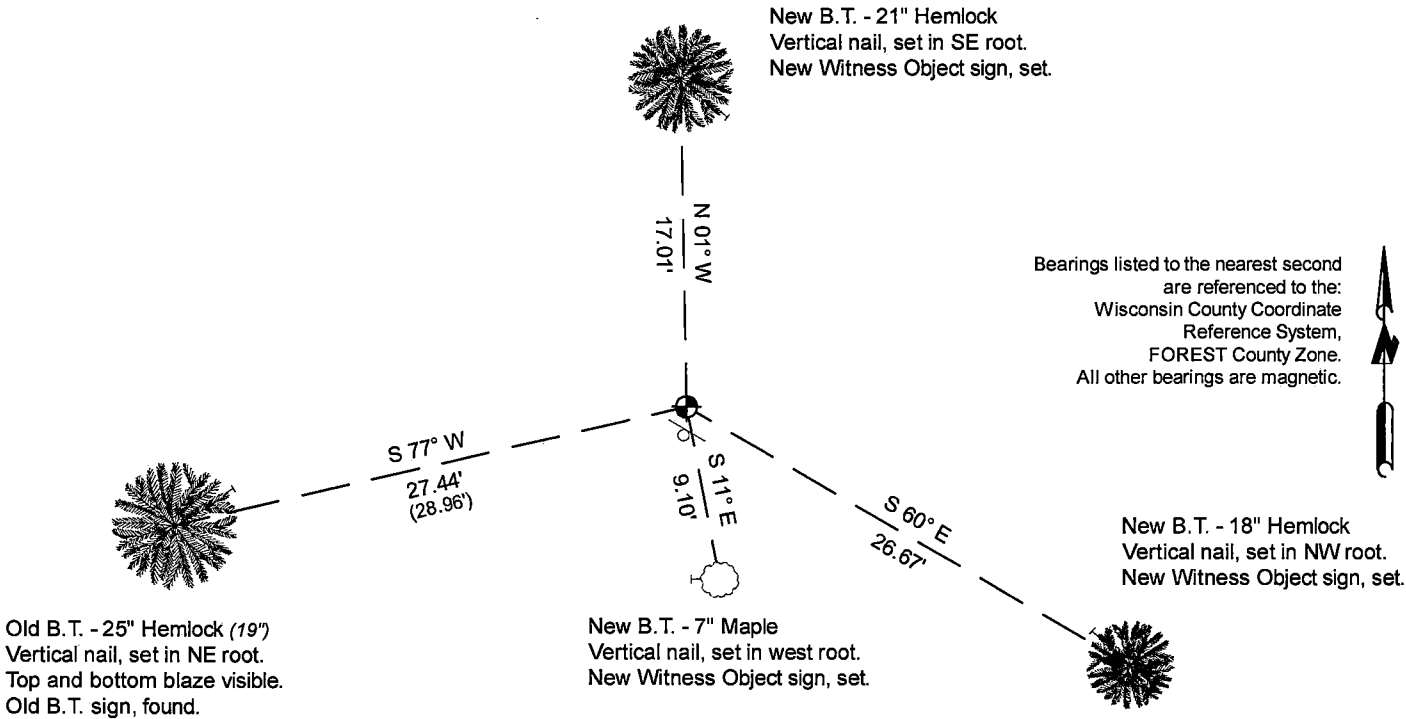
A-E 7.08(3)(b)

Original Surveyor: Artemas Curtis - September 1857 to October 1857
Yellow Birch 22 - N 15° W, 23 Links, Yellow Birch 18- S 24° E, 30 Links

See previous U.S.Public Land Survey Monument Record - A-11 - April 2, 1985 - Surveyor 1107 - William B. Cochrane - THENCE:

May 15, 2024 - In performing the 2024 - Forest County - "PLSS Corner Remonumentation and GPS Services" project, I found a 2.25" diameter aluminum pipe with a 3.25" diameter stamped aluminum cap. The monument is on highland, and extends ±12" above grade. I also found 1 of Cochrane's bearing trees. I established 3 new reference monuments as shown below.

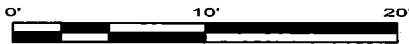
A-E 7.08(3)(c)(d) Plan view of corner with references to at least 4 witness monuments.



LEGEND

Monument sizes = outside diameter measurements.

- This Corner
- Steel sign post, found ±.5 foot south of Corner
- Galvanized nail, set or nail found as shown



A-E 7.08(3)(e) 1857 Surveyor set a post, 1985 Surveyor set a 2 1/2" diameter aluminum pipe monument, with an aluminum cap stamped to identify the corner. I found a 2.25" diameter aluminum pipe with a 3.25" diameter stamped aluminum cap in 2024.

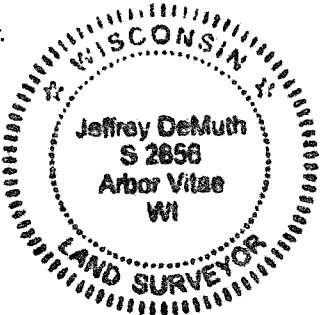
A-E 7.08(3)(f) I accept this monument in good faith as a FOUND PERPETUATED LOCATION of the corner.
A-E 7.08(3)(g)(h) This corner was previously determined through lost-corner-proportionate methods.

A-E 7.08(3)(i) I, Jeffrey L. DeMuth, Professional Land Surveyor No. S-2656, hereby certify that the corner location on this record was determined by me or under my direction and control, and that this U.S. Public Land Survey Monument Record is correct and complete to the best of my knowledge, and belief.

SIGNATURE

November 11, 2024

DATE



43815330020

43815330020

A11

U.S. PUBLIC LAND SURVEY MONUMENT RECORD

Index No. **A-11**

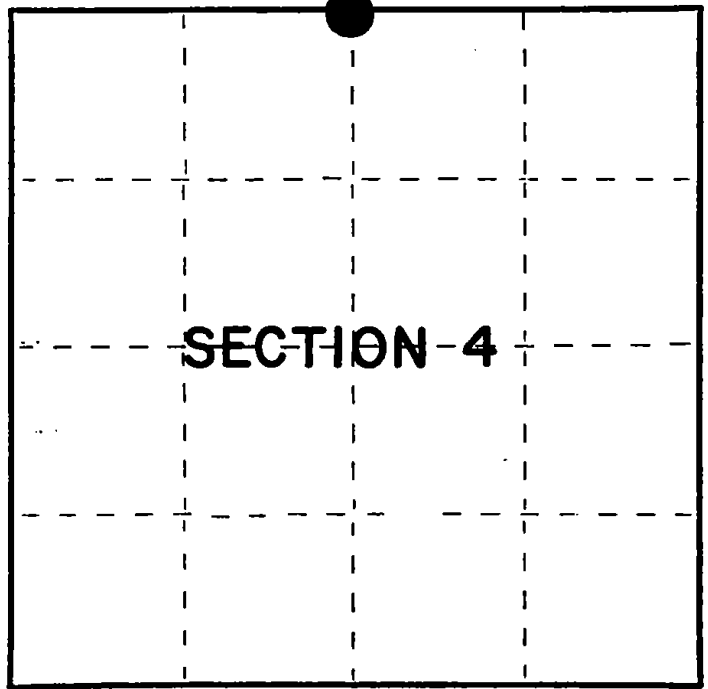
State of Wisconsin }
County of Forest } ss.

I, William B. Cochrane, do hereby
certify that on the 21st day
of September, 1983, I found
evidence of the North Quarter
corner of Section 4
Township 37, North, Range
15 East, Fourth Principal Meridian,
as described hereon; and that from this evidence
I established a new monument and accessories
as described hereon to perpetuate the original
location of this corner.

Resident witnesses:

David Brownell

Tony Tillman



O = Corner monument restored.

History of original corner establishment:

Original Government Survey in 1857 by Artemas Curtis. West between Sections 4 and 33,
40.00 chains, Set Quarter Corner post to Sections 4 and 33, from which the following
bear:

Y. Birch	22"	N15°W	23 lks.
Y. Birch	18"	S24°E	30 lks.

Description of corner evidence found:

The corner position was restored at proportionate distance and on line between the
Northeast and Northwest Section Corners of Section 4.

No original corner evidence was recovered.

Description of monument and accessories I established to perpetuate the original location of this corner.

At the restored corner position, set a 2½" diameter aluminum pipe monument, 3 feet long,
30 inches in the ground, with an aluminum cap stamped: T38N R15E, 1/4, S4, S33, T37N,
1983, S-1107. From which the following new blazed and scribed bearing trees bear:

Maple	20"	S86°E	6.08 feet
Hemlock	19"	S77°W	28.96 feet
Hemlock	16"	N16°W	25.84 feet
Steel Sign Post		South	0.50 feet

Dated at Hiles, Wis., this 2nd day of April, 1985.

Signature William B. Cochrane Title Land Surveyor Registration No. S-1107
(County Surveyor, Registered Land Surveyor, or other duly authorized official)

Office of Register of Deeds, County of Forest, I hereby certify that the within
instrument was filed in this office for record on the 24th day of April, 1985
at 1:00 o'clock P. M.

Paul Aschendrenner
(Register of Deeds)

By _____ Deputy

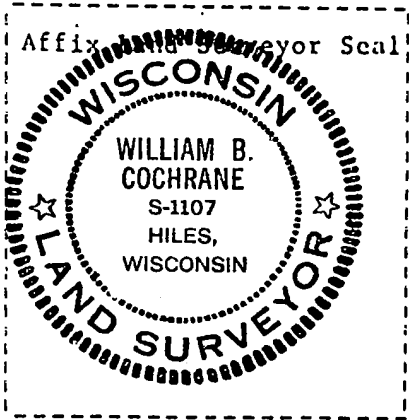
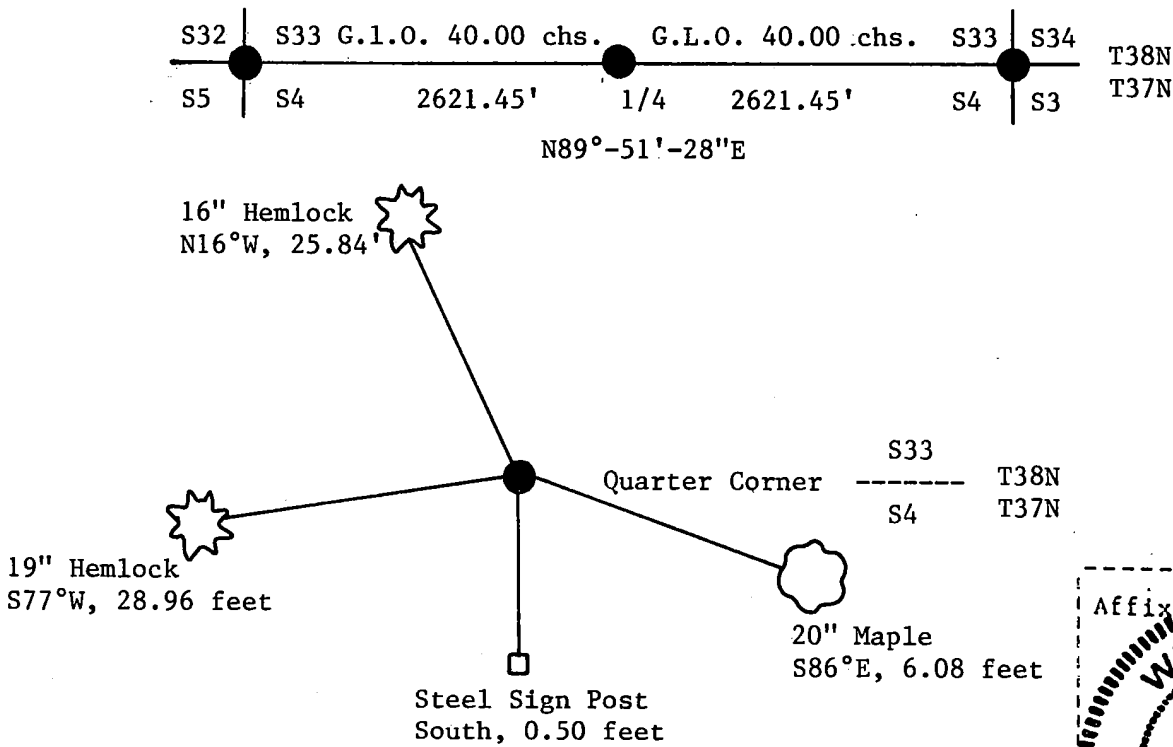
(e) Describe any material discrepancy between the location of the corner as restored or reestablished and the location of that corner as previously restored or reestablished by distance and direction. Show the discrepancy on the plan view drawing under (d), above. Show the distances between the corner as previously restored or reestablished and (1) the corner as restored or reestablished, and (2) to at least 2 of the witness monuments shown on the drawing in (d), above.

See drawing below.

(f) Was the corner restored through acceptance of (1) an obliterated evidence location, or, (2) a found perpetuated location?

Restored through lost corner proportionate methods.

(g&h) Was the corner reestablished through lost corner proportionate methods? If so, show the method, including the directions and distances to other public land survey corners used as evidence or used for proportioning in determining the corner location?



(i) I, William B. Cochrane
(type or print name) certify that the corner location shown on this record was determined by me or under my direction and control and that this U.S. Public Land Survey Monument Record is correct and complete to the best of my knowledge and belief.

William B. Cochrane April 2, 1985
Signature Date