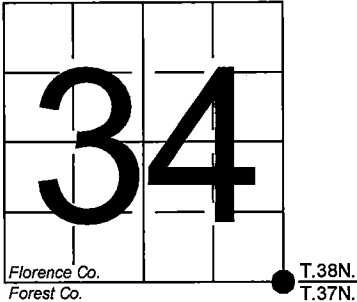


U. S. PUBLIC LAND SURVEY MONUMENT RECORD

NOTE: This form is intended and designed to fulfill all requirements of Wisconsin Administrative Code, Chapter A-E 7.08 U.S. Public Land Survey Monument Record (3) (a-i)

A-E 7.08(3)(a) Identity of corner:
Southeast Corner Section 34,
Township 38 North, Range 15 East
of the Fourth Principal Meridian,
Town of Fence, Florence County,
Wisconsin

WISCRS - FOREST COUNTY
N: 626,139.733 USft (XXX,XXX.XXX)
E: 915,281.474 USft (XXX,XXX.XXX)
Datum: NAD83 (2011)
GNSS Method RTK
GNSS Control WISCORS VRS



The coordinate value shown has been verified by the average of two or more GPS observations at a markedly different time. Coordinates shown in parenthesis are Florence Co. published values.

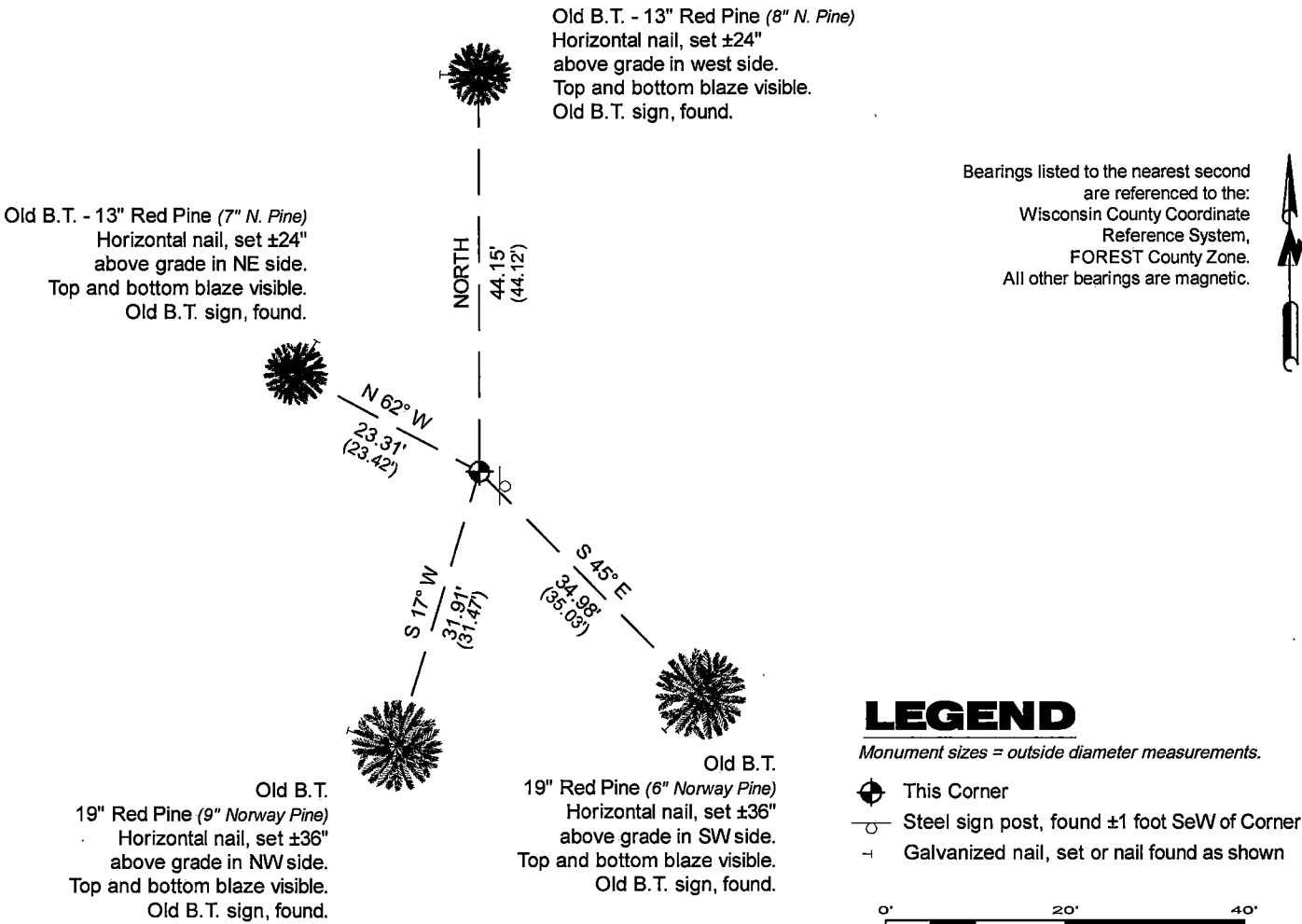
A-E 7.08(3)(b)

Original Surveyor: Artemas Curtis - September 1857 to October 1857
Hemlock 12 - N 69° W, 30 Links, Sugar 10 - N 9° E, 25 Links, Yellow Birch 20 - S 42° E 37 Links, Sugar 10 - S 75° W, 43 Links

See previous U.S.Public Land Survey Monument Record - A-17 - March 26, 1985 - Surveyor 1107 - William B. Cochrane - THENCE:

May 14, 2024 - In performing the 2024 - Forest County - "PLSS Corner Remonumentation and GPS Services" project, I found a 2.25" diameter galvanized iron pipe with a 3" diameter stamped brass cap. The monument is in a Red Pine grove, and extends ±14" above grade. I also found 2 of Resvick's bearing trees and 2 of Cochrane's bearing trees alive and in good condition. I set nails in the existing reference monuments and made new measurements as shown below.

A-E 7.08(3)(c)(d) Plan view of corner with references to at least 4 witness monuments.



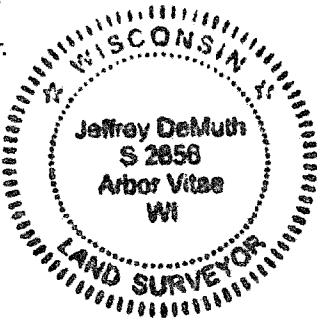
A-E 7.08(3)(e) 1857 Surveyor set a post, 1985 Surveyor found a 2" inside diameter galvanized iron pipe, with a brass cap stamped to identify corner. I found a 2.25" diameter galvanized iron pipe with a 3" diameter stamped brass cap in 2024.

A-E 7.08(3)(f) I accept this monument in good faith as a FOUND PERPETUATED LOCATION of the corner.
A-E 7.08(3)(g)(h) This corner was not determined through lost-corner-proportionate methods.

A-E 7.08(3)(i) I, Jeffrey L. DeMuth, Professional Land Surveyor No. S-2656, hereby certify that the corner location on this record was determined by me or under my direction and control, and that this U.S. Public Land Survey Monument Record is correct and complete to the best of my knowledge, and belief.

SIGNATURE

November 11, 2024
DATE



43815340000

43815340000

A17

CERTIFIED LAND CORNER RESTORATION

State of Wisconsin

County of Forest

ss.

I, Jean F. Resvick, do hereby certify that on the 14th day of August, 1972, I found evidence of the Northwest corner of Section 2 Township 37 North, Range 15 East, Fourth Principal Meridian, as described hereon; and that from this evidence I established a new monument and accessories as described hereon to perpetuate the original location of this corner:

Description of original monument and accessories and subsequent restorations:

Surveyed in 1857 by Artemas Curtis. 80.0 chains West between Sections 2 and 35 set post.

Hemlock 12", bears N69W, 30 lks.
 Sugar 10", bears N9E, 25 lks.
 Yellow Birch 20", bears S42E, 37 lks.
 Sugar 10", bears S75W, 43 lks.
 11.50 chains West enter swamp
 15.00 chains West leave swamp

Description of corner evidence found:

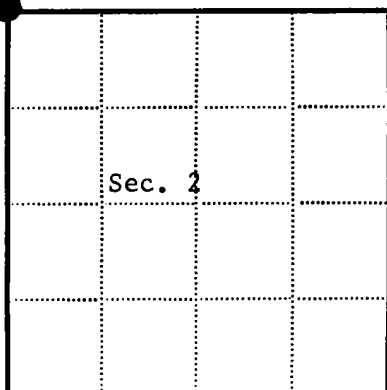
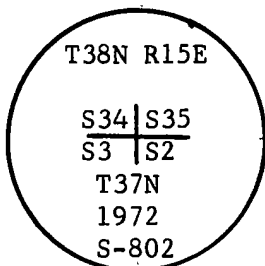
Broken scribed cedar post. Tree planter pulled post out. Yellow birch stump, bears S42E, 37 lks. Other stump evidence destroyed by tree planter. Swamp calls West to $\frac{1}{2}$ corner check.

Description of monument and accessories I established to perpetuate the original location of this corner:

At a point N42W, 37 lks. from the yellow birch stump set a 2inch inside diameter, galvanized wrought iron pipe, 5 feet long, filled with concrete with a brass cap stamped.

From which the following blazed and scribed new bearing trees bear:

Norway Pine, 6", S45E, 35.03 feet
 Norway Pine, 9", S17W, 31.47 feet
 Iron Post, SE, 1.0 feet



● = Corner monument restored

□ =

Resident witnesses.....

Dated at Rhinelanders Wisconsin, this 16th day of September 1972.

Signature *Jean F. Resvick* Title Land Surveyor
 (County Surveyor, Registered Land Surveyor, or other duly authorized official)

Surveyors Registration No. S-802

Office of Register of Deeds County of Forest

I hereby certify that the within instrument was filed in this office for record on the 18th day of October 9:30 AM 1972, and was filed in Book No. I Page No. A-17 of County Records.

Signature *Eugene Stegny* Title Register of Deeds

Township 37 North, Range 15 East, Section 2, Index No. A-17, Page No.

43815340000

DOCUMENT NUMBER

102402

A 17

U.S. PUBLIC LAND SURVEY MONUMENT RECORD

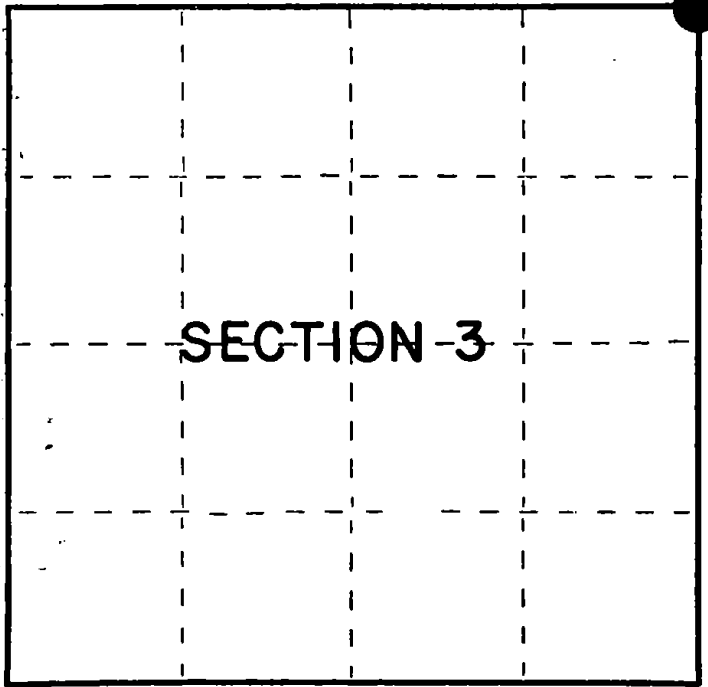
Index No. **A-17**

State of Wisconsin }
County of Forest } ss.

I, William B. Cochrane, do hereby
certify that on the 28th day
of February, 1985, I found
evidence of the Northeast Section
corner of Section 3
Township 37, North, Range
15 East, Fourth Principal Meridian,
as described hereon; and that from this evidence
I established a new monument and accessories
as described hereon to perpetuate the original
location of this corner.

Resident witnesses:

David Brownell



○ = Corner monument restored.

History of original corner establishment:

Original Government Survey in 1857 by Artemas Curtis. In 1972, Jean Resvick, a Land Surveyor with the U.S. Forest Service, found original bearing tree evidence. From evidence, set a 2" diameter galvanized iron pipe, 5 feet long, with a brass cap stamped: T38N R15E, S2, S3, S34, S35, T37N, 1972, S-802. From which the following bear:

N. Pine	6"	S45°E	35.03 feet
N. Pine	9"	S17°W	31.47 feet
Iron Sign Post		SE	1.00 feet

Description of corner evidence found:

Monument as described and in place, from which the following bear:

N. Pine	10"	S45°E	35.03 feet
N. Pine	13"	S17°W	31.47 feet
Iron Sign Post		SE	1.00 feet

Description of monument and accessories I established to perpetuate the original location of this corner.

Blazed and scribed the following new bearing trees:

N. Pine	8"	North	44.12 feet
N. Pine	7"	N62°W	23.42 feet

Dated at Hiles, Wis., this 26th day of March, 1985

Signature William B. Cochrane Title Land Surveyor Registration No. S-1107
(County Surveyor, Registered Land Surveyor, or other duly authorized official)

Office of Register of Deeds, County of Forest, I hereby certify that the within
instrument was filed in this office for record on the 24th day of April, 1985
at 1:00 o'clock P. M.

Paul Aschenbrenner
(Register of Deeds)

By _____ Deputy

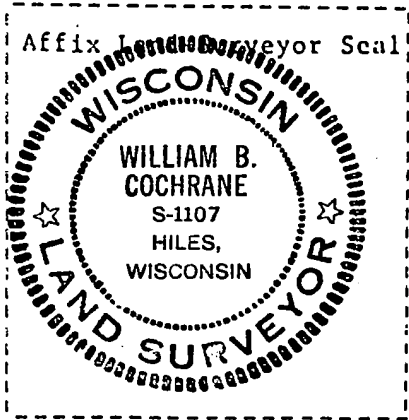
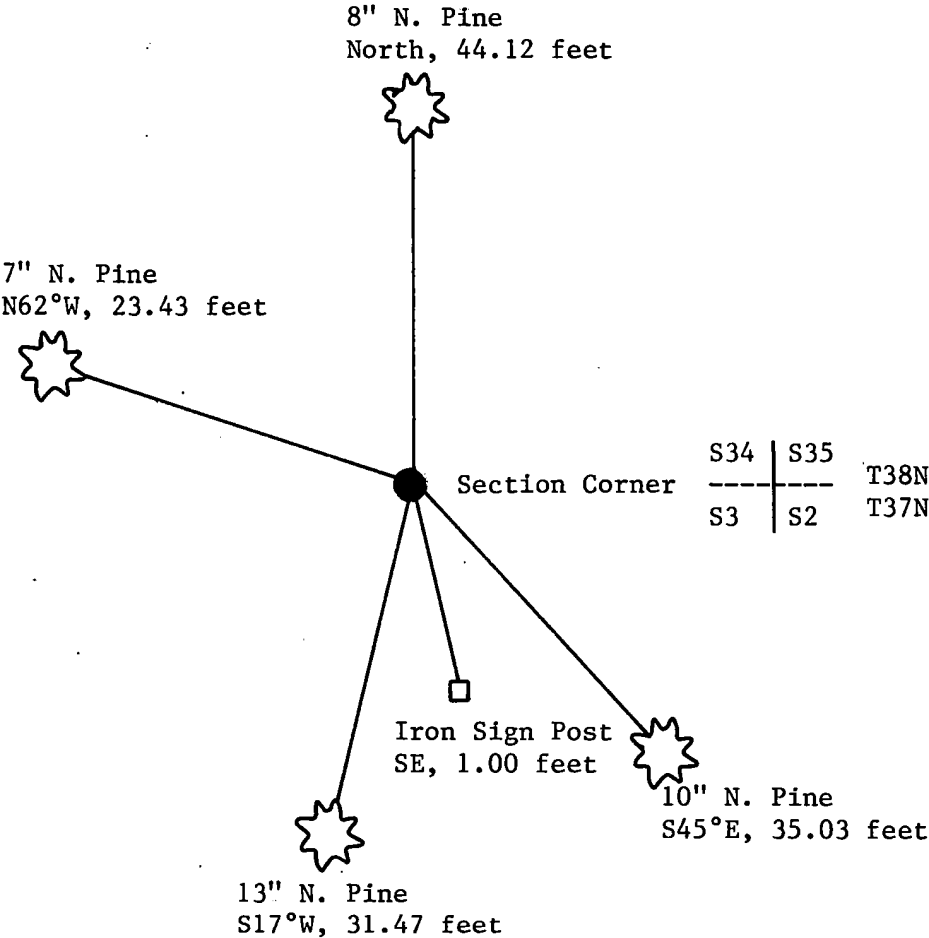
(e) Describe any material discrepancy between the location of the corner as restored or reestablished and the location of that corner as previously restored or reestablished by distance and direction. Show the discrepancy on the plan view drawing under (d), above. Show the distances between the corner as previously restored or reestablished and (1) the corner as restored or reestablished, and (2) to at least 2 of the witness monuments shown on the drawing in (d), above.

See Drawing Below.

(f) Was the corner restored through acceptance of (1) an obliterated evidence location, or, (2) a found perpetuated location?

Restored through acceptance of a found perpetuated location.

(g&h) Was the corner reestablished through lost corner proportionate methods? If so, show the method, including the directions and distances to other public land survey corners used as evidence or used for proportioning in determining the corner location?



(i) I, William B. Cochrane
(type or print name) certify that the corner location shown on this record was determined by me or under my direction and control and that this U.S. Public Land Survey Monument Record is correct and complete to the best of my knowledge and belief.

William B. Cochrane
Signature

March 26, 1985
Date