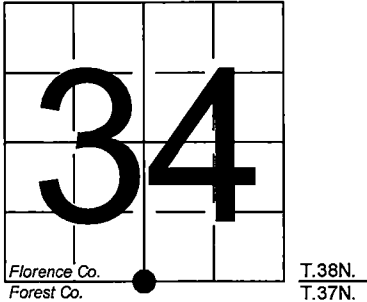


U. S. PUBLIC LAND SURVEY MONUMENT RECORD

NOTE: This form is intended and designed to fulfill all requirements of Wisconsin Administrative Code, Chapter A-E 7.08 U.S. Public Land Survey Monument Record (3) (a-i)

A-E 7.08(3)(a) Identity of corner:  
South 1/4 Corner Section 34,  
Township 38 North, Range 15 East  
of the Fourth Principal Meridian,  
Town of Fence, Florence County,  
Wisconsin

WISCRS - FOREST COUNTY  
N: 626,130.272 USft (XXX,XXX.XXX)  
E: 912,660.042 USft (XXX,XXX.XXX)  
Datum: NAD83 (2011)  
GNSS Method RTK  
GNSS Control WISCORS VRS



The coordinate value shown has been verified by the average of two or more GPS observations at a markedly different time. Coordinates shown in parenthesis are Florence Co. published values.

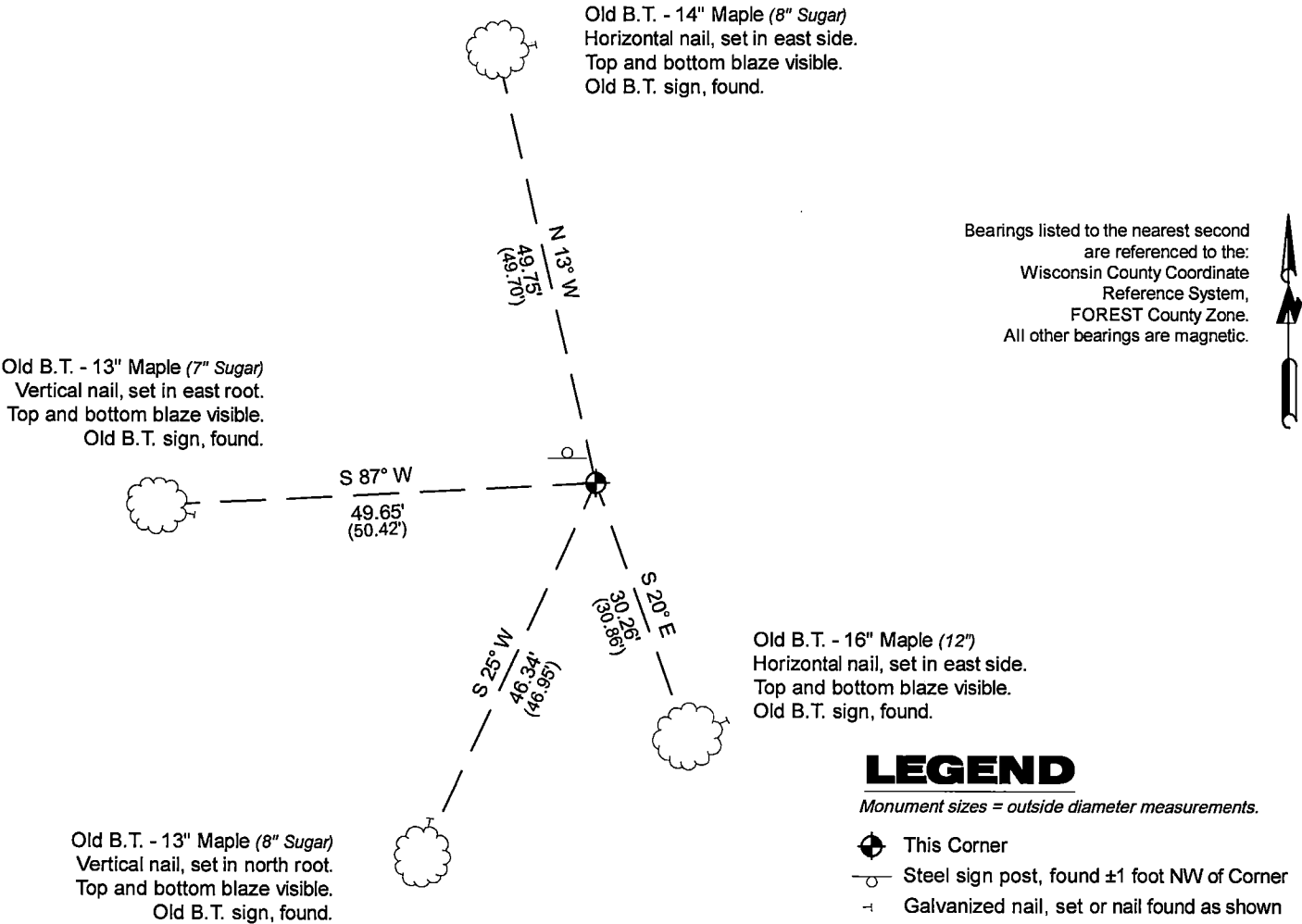
A-E 7.08(3)(b)

Original Surveyor: Artemas Curtis - September 1857 to October 1857  
Hemlock 8 - N 14° E, 50 Links, Yellow Birch 18 - S 39° W, 27 Links

See previous U.S.Public Land Survey Monument Record - A-15 - March 5, 1995 - Surveyor 1634 - Gary L. Pisoni - THENCE:

May 15, 2024 - In performing the 2024 - Forest County - "PLSS Corner Remonumentation and GPS Services" project, I found a 2.25" diameter galvanized iron pipe with a 2.9" diameter stamped brass cap. The monument is high ground ±150' west of a woods trail, and is flush with grade. I also found 3 of Pisoni's bearing trees and 1 of Cochrane's bearing trees alive and in good condition. I set nails in the existing reference monuments and made new measurements as shown below.

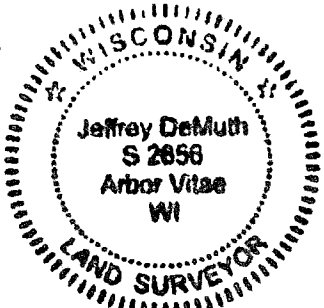
A-E 7.08(3)(c)(d) Plan view of corner with references to at least 4 witness monuments.



A-E 7.08(3)(e) 1857 Surveyor set a post, 1995 Surveyor found a 2" inside diameter galvanized iron pipe, with a brass cap stamped to identify corner. I found a 2.25" diameter galvanized iron pipe with a 2.9" diameter stamped brass cap in 2024.

A-E 7.08(3)(f) I accept this monument in good faith as a FOUND PERPETUATED LOCATION of the corner.  
A-E 7.08(3)(g)(h) This corner was not determined through lost-corner-proportionate methods.

A-E 7.08(3)(i) I, Jeffrey L. DeMuth, Professional Land Surveyor No. S-2656, hereby certify that the corner location on this record was determined by me or under my direction and control, and that this U.S. Public Land Survey Monument Record is correct and complete to the best of my knowledge, and belief.



SIGNATURE \_\_\_\_\_ DATE November 11, 2024

## CERTIFIED LAND CORNER RESTORATION

State of Wisconsin

County of Forest

ss.

I Jean F. Resvick, do hereby certify that on the 5th day of June, 19 73,  
~~XXXX~~ evidence ~~XXXX~~ was found of the north quarter corner of Section 3  
 Township 37 north, Range 15 east, Fourth Principal Meridian, as described  
 hereon; and that from this evidence I established a new monument and accessories as described hereon to per-  
 petuate the original location of this corner:

Description of original monument and accessories and subsequent restorations:

Surveyed in 1857 by Artemas Curtis  
 40 chains west between Sections 3 and 32  
 Set post  
 Hemlock 8, N14E, 50 lks.  
 Yellow Birch 18, S39W, 27 lks.  
 9.50 chains east enter swamp bears north.

Description of corner evidence found:

2 inch diameter galvanized pipe, 3 feet long in mound of rock.  
 Hemlock stump roots N14E, 50 lks.  
 Large stump hole S39W, 27 lks.  
 Swamp 9.50 chains east.

Description of monument and accessories I established to perpetuate the location of this corner:

Replaced iron pipe found with a 2 inch inside diameter galvanized iron pipe, 3 feet long  
 filled with concrete to weight 5 lbs. per foot, with a brass cap stamped

T38N R15E

 $\frac{1}{4}$  S34  
 $\frac{1}{4}$  S3

T37N

1973

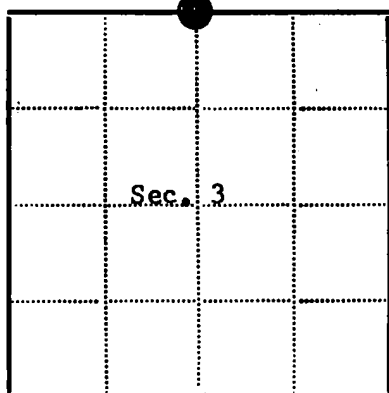
S-802

From which the following blazed and scribed new bearing trees bear.

Maple 9, S85E, 21.78 feet

Maple 9, S72W, 22.46 feet

Sign post set 1 foot NE of monument



● - Corner monument restored

□ -

Resident witnesses.....

Dated at Rhineland19 73Wisconsin this 30th day of NovSignature Jean F. Resvick

(County Surveyor, Registered Land Surveyor, or other duly authorized official)

Surveyors Registration No. S-802

DOCUMENT NUMBER

104440

Office of Register of Deeds

County of Forest

I hereby certify that the within instrument was filed in this office for record

on the 13th day of NovemberNo. A-15 of County Records.Signature Eugene Stutzman Title Register of DeedsTownship 37 north, Range 15 east, Section 3, Index No. A-15, Page No. 15

43815340020

U.S. PUBLIC LAND SURVEY MONUMENT RECORD

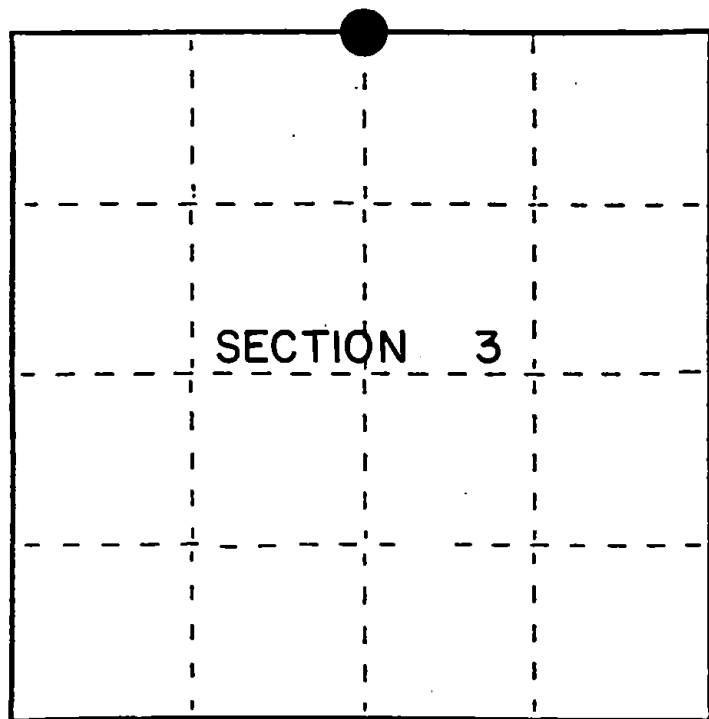
Index No. A-15

State of Wisconsin }  
County of Forest } ss.

I, Gary L. Pisoni, do hereby  
certify that on the 8th day  
of December, 1994, I found  
evidence of the North Quarter  
corner of Section 3  
Township 37, North, Range  
15 East, Fourth Principal Meridian,  
as described hereon; and that from this evidence  
I established a new monument and accessories  
as described hereon to perpetuate the original  
location of this corner.

Resident witnesses:

\_\_\_\_\_  
\_\_\_\_\_  
\_\_\_\_\_



● = Corner monument restored.

History of original corner establishment:  
Original Government Survey in 1857 by Artemas Curtis.

In 1973, Jean Resvick, RLS, with the Forest Service found a 2" dia. iron pipe and original bearing tree evidence. Set a 2" dia. galvanized iron pipe with a brass cap stamped to identify the corner. Blazed and scribed the following; Maple, 9", S85°E, 21.78 feet, Maple, 9", S72°W, 22.46 feet.

In 1984, William Cochrane, RLS, with the Forest Service, found the Southeast B.T. by Resvick to be dead. Cochrane blazed and scribed a new bearing tree; Maple, 12", S20°E, 30.86 feet  
Description of corner evidence found:

Found the monument and bearing trees as described above;

Maple(Dead)	14"	S72°W	22.46 feet
Maple	14"	S24°E	30.91 feet

Description of monument and accessories I established to perpetuate the original location of this corner.  
Blazed and scribed the following new bearing trees; (Measurements taken to a nail in side of tree)

Sugar Maple	8"	S25°W	46.95 feet
Sugar Maple	7"	S87°W	50.42 feet
Sugar Maple	8"	N13°W	49.70 feet
Steel Sign Post		N38°W	1.28 feet

Dated at Iron River, MI, this 5th day of March, 1995

Signature Gary L. Pisoni Title Land Surveyor Registration No. S-1634  
(County Surveyor, Registered Land Surveyor, or other duly authorized official)

Office of Register of Deeds, County of Forest, I hereby certify that the within  
instrument was filed in this office for record on the 10th day of March, 1997  
at 1:30 o'clock P M.

(Register of Deeds)

By Paul Tomlinson Deputy

U.S. PUBLIC LAND SURVEY MONUMENT RECORD

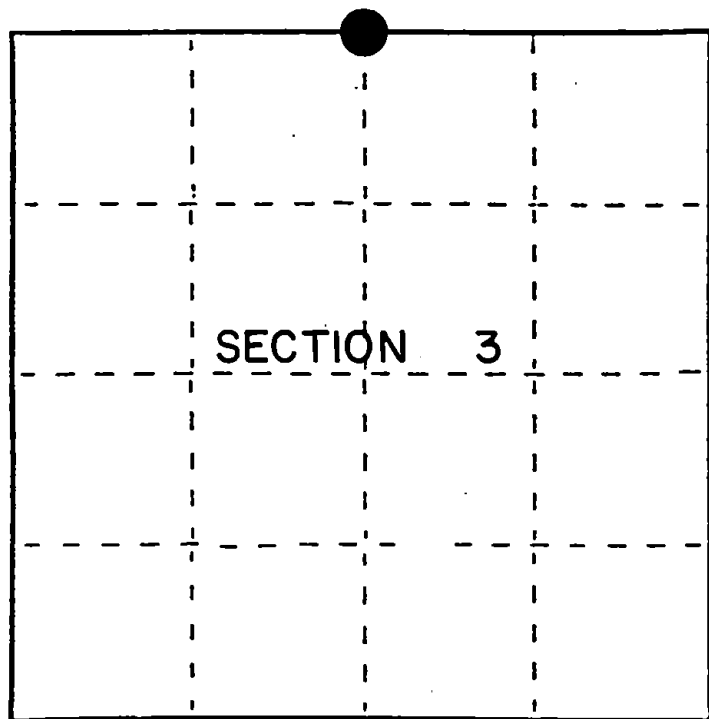
Index No. A-15

State of Wisconsin }  
County of Forest } ss.

I, Gary L. Pisoni, do hereby  
certify that on the 8th day  
of December, 1994, I found  
evidence of the North Quarter  
corner of Section 3  
Township 37, North, Range  
15 East, Fourth Principal Meridian,  
as described hereon; and that from this evidence  
I established a new monument and accessories  
as described hereon to perpetuate the original  
location of this corner.

Resident witnesses:

\_\_\_\_\_  
\_\_\_\_\_  
\_\_\_\_\_



● = Corner monument restored.

History of original corner establishment:  
Original Government Survey in 1857 by Artemas Curtis.

In 1973, Jean Resvick, RLS, with the Forest Service found a 2" dia. iron pipe and original bearing tree evidence. Set a 2" dia. galvanized iron pipe with a brass cap stamped to identify the corner. Blazed and scribed the following; Maple, 9", S85°E, 21.78 feet, Maple, 9", S72°W, 22.46 feet.

In 1984, William Cochrane, RLS, with the Forest Service, found the Southeast B.T. by Resvick to be dead. Cochrane blazed and scribed a new bearing tree; Maple, 12", S20°E, 30.86 feet  
Description of corner evidence found:

Found the monument and bearing trees as described above;

Maple(Dead)	14"	S72°W	22.46 feet
Maple	14"	S24°E	30.91 feet

Description of monument and accessories I established to perpetuate the original location of this corner.  
Blazed and scribed the following new bearing trees; (Measurements taken to a nail in side of tree)

Sugar Maple	8"	S25°W	46.95 feet
Sugar Maple	7"	S87°W	50.42 feet
Sugar Maple	8"	N13°W	49.70 feet
Steel Sign Post		N38°W	1.28 feet

Dated at Iron River, MI, this 5th day of March, 1995

Signature Gary L. Pisoni Title Land Surveyor Registration No. S-1634  
(County Surveyor, Registered Land Surveyor, or other duly authorized official)

Office of Register of Deeds, County of Forest, I hereby certify that the within  
instrument was filed in this office for record on the 10th day of March, 1997  
at 1:30 o'clock P M.

(Register of Deeds)

By Paul Tomlinson Deputy

U.S. PUBLIC LAND SURVEY MONUMENT RECORD

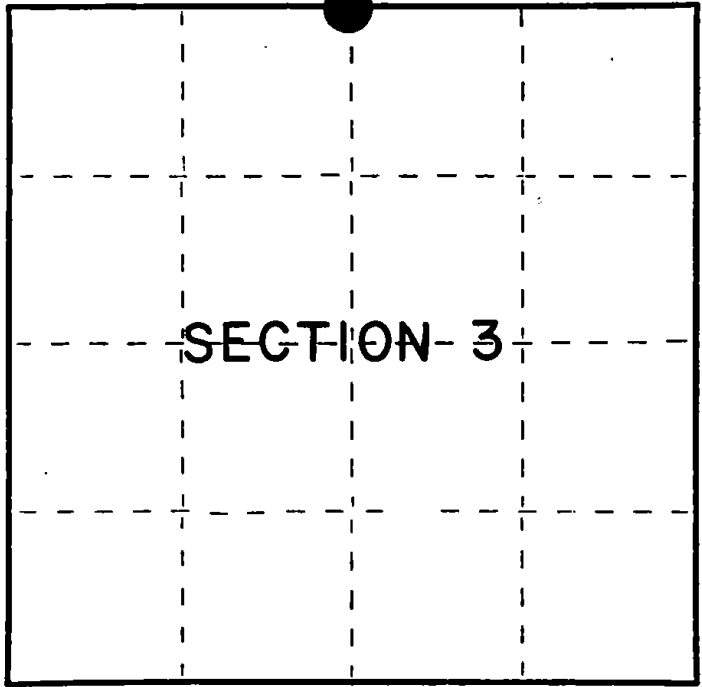
Index No. **A-15**

State of Wisconsin }  
County of Forest } ss.

I, William B. Cochrane, do hereby  
certify that on the 15th day  
of October, 1984, I found  
evidence of the North Quarter  
corner of Section 3  
Township 37, North, Range  
15 East, Fourth Principal Meridian,  
as described hereon; and that from this evidence  
I established a new monument and accessories  
as described hereon to perpetuate the original  
location of this corner.

Resident witnesses:

Tony Tillman



○ = Corner monument restored.

History of original corner establishment:

Original Government Survey in 1857 by Artemas Curtis. In 1973, Jean Resvick, a Land Surveyor with the U.S. Forest Service, found a 2" diameter iron pipe, in concurrence with original B.T. evidence. In place of pipe, set a 2" diameter galvanized iron pipe, 3 feet long, with a brass cap stamped: T38N R15E, 1/4, S3, S34, T37N, 1973, S-802.

From which the following bear:

Maple	9"	S85°E	21.78 feet
Maple	9"	S72°W	22.46 feet

Description of corner evidence found:

Monument as described and in place, from which the following bear:

Maple	14"	S72°W	22.46 feet
-------	-----	-------	------------

Description of monument and accessories I established to perpetuate the original location of this corner.

Blazed and scribed a new bearing tree:

Maple	12"	S20°E	30.86 feet
-------	-----	-------	------------

Dated at Hiles Wis., this 11th day of March, 1985

Signature William B. Cochrane Title Land Surveyor Registration No. S-1107  
(County Surveyor, Registered Land Surveyor, or other duly authorized official)

Office of Register of Deeds, County of Forest, I hereby certify that the within  
instrument was filed in this office for record on the 24th day of April, 1985  
at 1:00 o'clock P. M.

Paul Aschenbrenner  
(Register of Deeds)

By \_\_\_\_\_ Deputy

FORM NO. 985-A

H.C. Miller Company

Stock No. 26273

Document Number 127867

438153410020

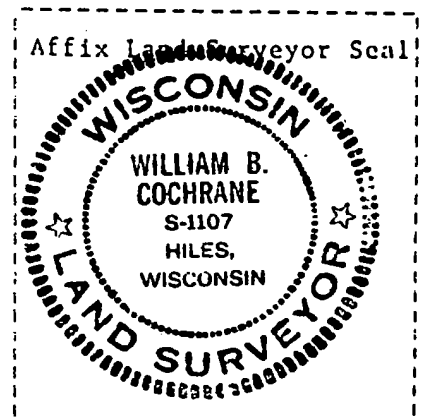
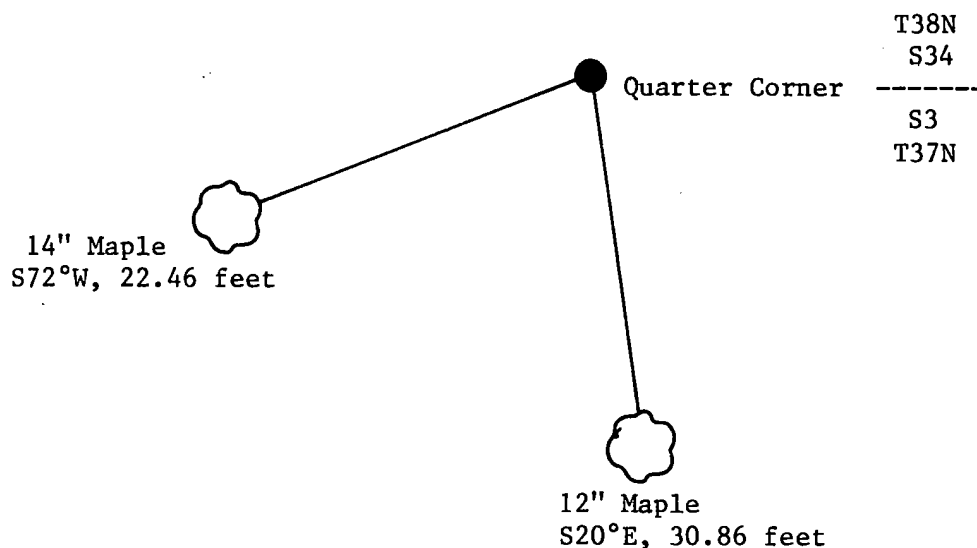
- (e) Describe any material discrepancy between the location of the corner as restored or reestablished and the location of that corner as previously restored or reestablished by distance and direction. Show the discrepancy on the plan view drawing under (d), above. Show the distances between the corner as previously restored or reestablished and (1) the corner as restored or reestablished, and (2) to at least 2 of the witness monuments shown on the drawing in (d), above.

See drawing below.

- (f) Was the corner restored through acceptance of (1) an obliterated evidence location, or, (2) a found perpetuated location?

Restored through acceptance of a found perpetuated location.

- (g&h) Was the corner reestablished through lost corner proportionate methods? If so, show the method, including the directions and distances to other public land survey corners used as evidence or used for proportioning in determining the corner location?



- (i) I, William B. Cochrane  
(type or print name) certify that the corner location shown  
on this record was determined by me or under my direction and  
control and that this U.S. Public Land Survey Monument Record is  
correct and complete to the best of my knowledge and belief.

William B. Cochrane March 11, 1985  
Signature Date