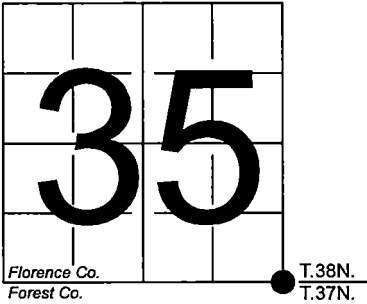


U. S. PUBLIC LAND SURVEY MONUMENT RECORD

NOTE: This form is intended and designed to fulfill all requirements of Wisconsin Administrative Code, Chapter A-E 7.08 U.S. Public Land Survey Monument Record (3) (a-i)

A-E 7.08(3)(a) Identity of corner:
Southeast Corner Section 35,
Township 38 North, Range 15 East
of the Fourth Principal Meridian,
Town of Fence, Florence County,
Wisconsin

WISCRS - FOREST COUNTY
N: 626,134.522 USft (XXX,XXX.XXX)
E: 920,528.841 USft (XXX,XXX.XXX)
Datum: NAD83 (2011)
GNSS Method RTK
GNSS Control WISCORS VRS



The coordinate value shown has been verified by the average of two or more GPS observations at a markedly different time. Coordinates shown in parenthesis are previously published values.

A-E 7.08(3)(b)

Original Surveyor: Artemas Curtis - September 1857 to October 1857
White Pine 22 - N 55° W, 38 Links, White Pine 20 - N 11° E, 42 Links, Hemlock 10 - S 37° E, 52 Links, Hemlock 15 - S 45° W, 18 Links

See previous U.S. Public Land Survey Monument Record - A-21 - March 8, 1985 - Surveyor 1107 - William B. Cochrane - THENCE:

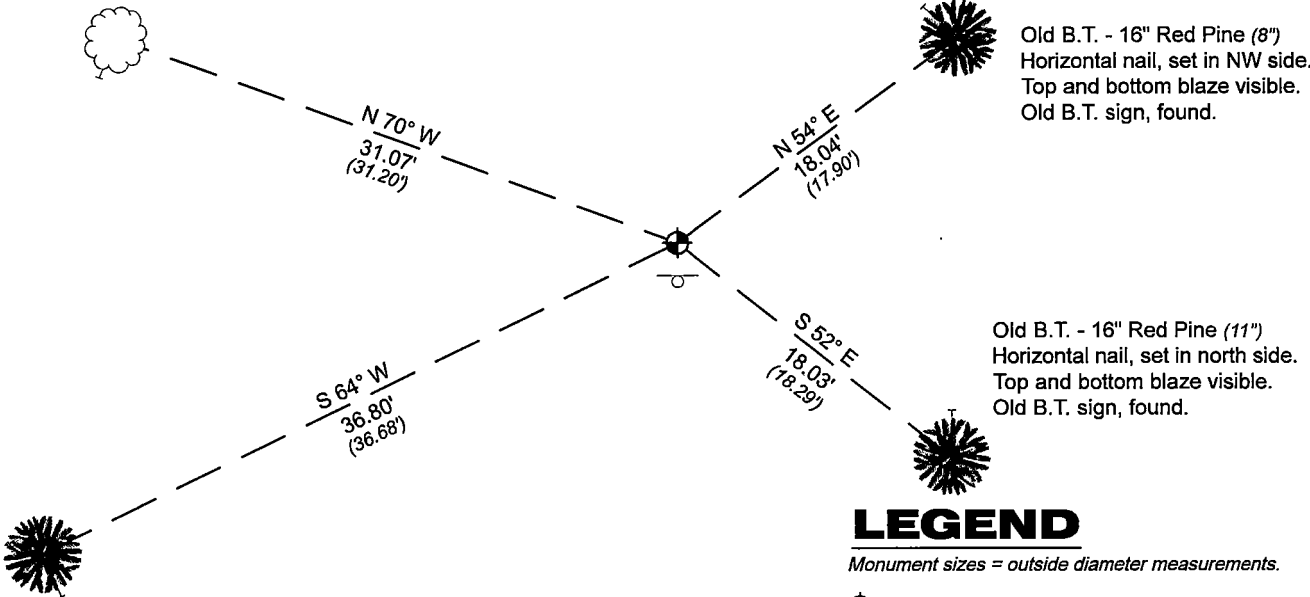
- October 26, 1987 - Surveyor 1665 - John C. Schulke - indicates this position as "2 1/2" diameter galvanized iron pipe monument, 60" long with a brass cap stamped to identify the corner" on Forest Co. record Map #371501-19871230.

April 24, 2024 - In performing the 2024 - Forest County - "PLSS Corner Remonumentation and GPS Services" project, I found a 2.25" diameter iron pipe monument with a 3" diameter brass cap stamped to identify the corner. The monument is on highland ±70' south of National Forest Road 3380, and extends ±14" above grade. I also found 4 of Cochrane's bearing trees alive and in acceptable condition. I established 0 new reference monuments as shown below.

A-E 7.08(3)(c)(d) Plan view of corner with references to at least 4 witness monuments.

Old B.T. - 13" Aspen (7")
Horizontal nail, set in SW side
Top and bottom blaze visible.
Old B.T. sign, found.

Bearings listed to the nearest second
are referenced to the:
Wisconsin County Coordinate
Reference System,
FOREST County Zone.
All other bearings are magnetic.



Old B.T. - 15" Red Pine (6")
Horizontal nail, set in SE side
±30" above grade.
Top and bottom blaze visible.
Old B.T. sign, found.

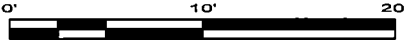
Old B.T. - 16" Red Pine (8")
Horizontal nail, set in NW side.
Top and bottom blaze visible.
Old B.T. sign, found.

Old B.T. - 16" Red Pine (11")
Horizontal nail, set in north side.
Top and bottom blaze visible.
Old B.T. sign, found.

LEGEND

Monument sizes = outside diameter measurements.

- ⊕ This Corner
- Steel sign post, found ±1 foot south of Corner
- Galvanized nail, set or nail found as shown



A-E 7.08(3)(e) 1857 Surveyor set a post, 1985 Surveyor found a 2" inside diameter galvanized iron pipe, with brass cap stamped to identify corner, 1987 Surveyor found 2 1/2" diameter galvanized iron pipe, with brass cap stamped to identify corner. In 2024, I found a 2.25" diameter iron pipe monument with a 3" diameter brass cap stamped to identify the corner.

A-E 7.08(3)(f) I accept this monument in good faith as a FOUND PERPETUATED LOCATION of the corner.

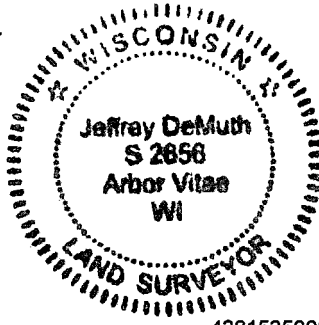
A-E 7.08(3)(g)(h) This corner was not determined through lost-corner-proportionate methods.

A-E 7.08(3)(i) I, Jeffrey L. DeMuth, Professional Land Surveyor No. S-2656, hereby certify that the corner location on this record was determined by me or under my direction and control, and that this U.S. Public Land Survey Monument Record is correct and complete to the best of my knowledge, and belief.

SIGNATURE

April 29, 2024

DATE



43815350000

43815350000

Z21

CERTIFIED LAND CORNER RESTORATION

State of Wisconsin

County of Forest

} ss.

I, Jean F. Resvick, do hereby certify that on the 24th day of July, 1972, I found evidence of the Northwest Section corner of Section 1 Township 37 North, Range 15 East, Fourth Principal Meridian, as described hereon; and that from this evidence I established a new monument and accessories as described hereon to perpetuate the original location of this corner:

Description of original monument and accessories and subsequent restorations:

Surveyed in 1857 by Artemas Curtis.
 80.00 chains west between sections 1 & 36, set post.
 White pine 22, N55W, 38 lks.
 White Pine 20, N11E, 42 lks.
 Hemlock 10, S37E, 52 lks.
 Hemlock 15, S45W, 18 lks.
 5.50 chains south, stream 12 lks, wide runs west.
 10.00 chains west, stream 20 lks. wide runs NE.
 7.00 chains north, creek 6 lks. wide runs NE.

Description of corner evidence found:

White Pine stump, scribed S35, B.T.
 From a point S55E, 38 lks. from stump found above a white pine stump
 South 5.50 chains stream 20 lks. wide
 North 7.00 chains creek 4 lks. wide
 West 10.00 chains runs NE

Description of monument and accessories I established to perpetuate the original location of this corner:

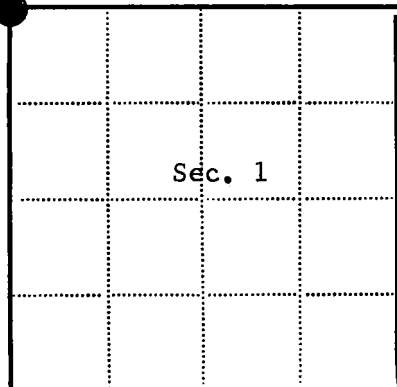
At point S55E, 38 links from white pine stump set 2 inch. inside diameter galvanized wrought iron pipe 5 foot long, filled with concrete with 6 inch square plate on bottom with brass cap stamped:

T38N R15E

S35 | S36
 S2 | S1
 T37N
 1972
 S - 802

From which the following blazed and scribed new bearing trees bear:

Red Pine 6, N54E, 17.90 ft.
 Red Pine 9, S52E, 18.29 ft.
 Spruce 4, S17W, 9.25 ft.



● = Corner monument restored

□ =

Resident witnesses

Dated at Rhineland Wisconsin, this 24th day of April, 1973.

Signature Jean F. Resvick Title Land Surveyor
 (County Surveyor, Registered Land Surveyor, or other duly authorized official)

Surveyors Registration No. S-802DOCUMENT NO. 103125Office of Register of Deeds County of Forest

I hereby certify that the within instrument was filed in this office for record on the 10th day of April, 1973, and was filed in Book No. A-21 Page No. A-21 of County Records.

Signature Eugene Stutzman Title Register of Deeds

Township 37 North, Range 15E, Section 1 Index No. A-21, Page No. A-21

43815350000

A
21

U.S. PUBLIC LAND SURVEY MONUMENT RECORD

Index No. **A-21**

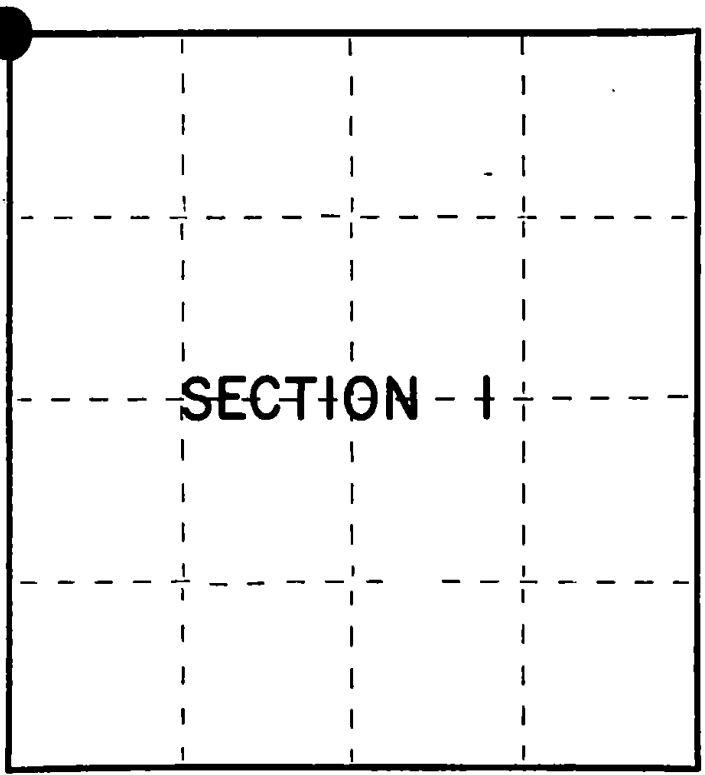
State of Wisconsin }
County of Forest } ss.

I William B. Cochrane, do hereby
certify that on the 14th day
of February, 1985, I found
evidence of the Northwest Section
corner of Section 1
Township 37, North, Range
15 East, Fourth Principal Meridian,
as described hereon; and that from this evidence
I established a new monument and accessories
as described hereon to perpetuate the original
location of this corner.

Resident witnesses:

David Brownell

Tony Tillman



○ = Corner monument restored.

History of original corner establishment:

Original Government Survey in 1857 by Artemas Curtis. In 1972, Jean Resvick, a Land Surveyor with the U.S. Forest Service, found original B.T. evidence. From evidence, set a 2" diameter galvanized iron pipe, 5 feet long, with a brass cap stamped: T38N R15E, S1, S2, S35, S36, T37N, 1972, S-802. From which the following bear:

R. Pine	6"	N54°E	17.90 feet
R. Pine	9"	S52°E	18.29 feet
Spruce	4"	S17°W	9.25 feet

Description of corner evidence found:

Monument as described and in place, from which the following bear:

R. Pine	8"	N54°E	17.90 feet
R. Pine	9"	S52°E	18.29 feet
Spruce	4"	S17°W	9.25 feet- cut down for Photo Project.

Description of monument and accessories I established to perpetuate the original location of this corner.

Blazed and scribed the following new bearing trees:

R. Pine	6"	S64°W	36.68 feet
Aspen	7"	N70°W	31.20 feet
Steel sign post		South	1.00 feet

Dated at Hiles Wis., this 8th day of March, 1985.

Signature William B. Cochrane Title Land Surveyor Registration No. S-1107
(County Surveyor, Registered Land Surveyor, or other duly authorized official)

Office of Register of Deeds, County of Forest, I hereby certify that the within
instrument was filed in this office for record on the 24th day of April, 1985
at 1:00 o'clock P. M.

Paul Aschenbrenner
(Register of Deeds)

By _____ Deputy

FORM NO. 985-A

K.C. Miller Company

Stock No. 26273

Document Number 127070

4381935000

- (e) Describe any material discrepancy between the location of the corner as restored or reestablished and the location of that corner as previously restored or reestablished by distance and direction. Show the discrepancy on the plan view drawing under (d), above. Show the distances between the corner as previously restored or reestablished and (1) the corner as restored or reestablished, and (2) to at least 2 of the witness monuments shown on the drawing in (d), above.

See drawing below.

- (f) Was the corner restored through acceptance of (1) an obliterated evidence location, or, (2) a found perpetuated location?

Restored through acceptance of a found perpetuated location.

- (g&h) Was the corner reestablished through lost corner proportionate methods? If so, show the method, including the directions and distances to other public land survey corners used as evidence or used for proportioning in determining the corner location?

