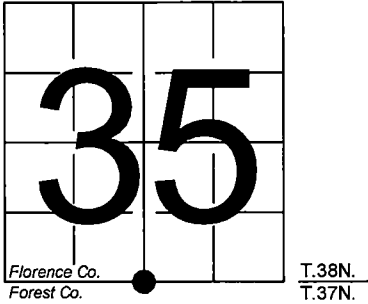


U. S. PUBLIC LAND SURVEY MONUMENT RECORD

NOTE: This form is intended and designed to fulfill all requirements of Wisconsin Administrative Code, Chapter A-E 7.08 U.S. Public Land Survey Monument Record (3) (a-i)

A-E 7.08(3)(a) Identity of corner:  
South 1/4 Corner Section 35,  
Township 38 North, Range 15 East  
of the Fourth Principal Meridian,  
Town of Fence, Florence County,  
Wisconsin

WISCRS - FOREST COUNTY  
N: 626,148.752 USft (XXX,XXX.XXX)  
E: 917,904.133 USft (XXX,XXX.XXX)  
Datum: NAD83 (2011)  
GNSS Method RTK  
GNSS Control WISCORS VRS



The coordinate value shown has been verified by the average of two or more GPS observations at a markedly different time. Coordinates shown in parenthesis are Florence Co. published values.

A-E 7.08(3)(b)

Original Surveyor: Artemas Curtis - September 1857 to October 1857  
Yellow Pine 16 - N 18° E, 41 Links, Yellow Pine 16 - S 81° E, 65 Links

See previous U.S.Public Land Survey Monument Record - A-19 - March 11, 1985 - Surveyor 1107 - William B. Cochrane - THENCE:

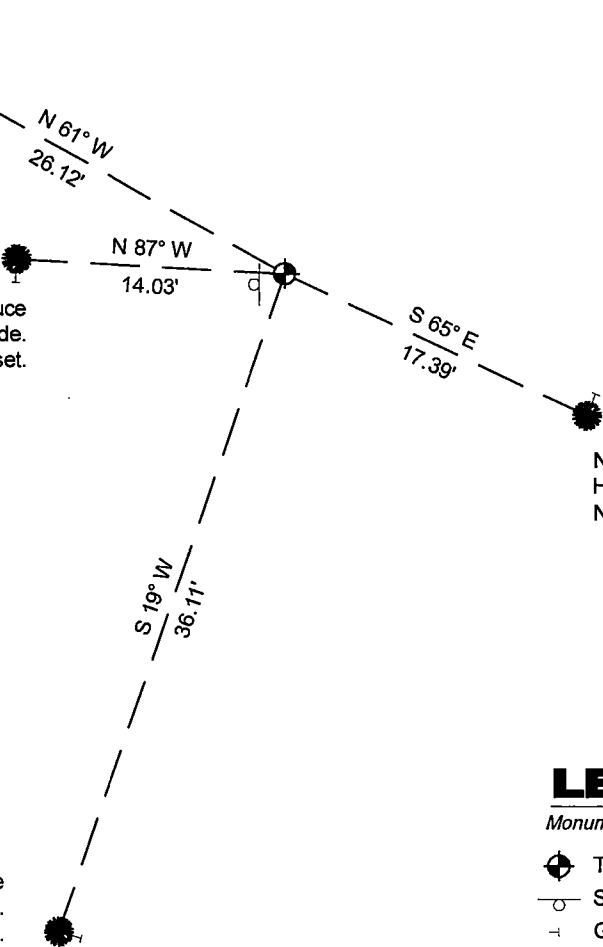
May 14, 2024 - In performing the 2024 - Forest County - "PLSS Corner Remonumentation and GPS Services" project, I found a 2.25" diameter aluminum pipe with a 3.25" diameter stamped aluminum cap. The monument is in a black spruce / tamarack swamp, and extends ±16" above grade. I did not find any of Cochrane's bearing trees. I established 4 new reference monuments as shown below.

A-E 7.08(3)(c)(d) Plan view of corner with references to at least 4 witness monuments.

New B.T. - 9" Tamarack  
Horizontal nail, set  
±18" above grade in SW side.  
New Witness Object sign, set.

New B.T. - 5" Black Spruce  
Horizontal nail, set in south side.  
New Witness Object sign, set.

New B.T. - 5" Black Spruce  
Horizontal nail, set in east side.  
New Witness Object sign, set.



Bearings listed to the nearest second  
are referenced to the:  
Wisconsin County Coordinate  
Reference System,  
FOREST County Zone.  
All other bearings are magnetic.

New B.T. - 5" Black Spruce  
Horizontal nail, set in NE side.  
New Witness Object sign, set.

LEGEND

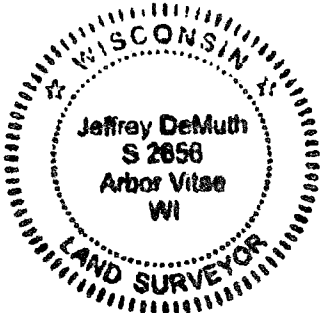
Monument sizes = outside diameter measurements.

- This Corner
- Steel sign post, found ±1 foot SW of Corner
- Galvanized nail, set or nail found as shown

A-E 7.08(3)(e) 1857 Surveyor set a post, 1985 Surveyor set a 2 1/2" diameter aluminum pipe monument, with an aluminum cap stamped to identify corner. I found a 2.25" diameter aluminum pipe with a 3.25" diameter stamped aluminum cap in 2024.

A-E 7.08(3)(f) I accept this monument in good faith as a FOUND PERPETUATED LOCATION of the corner.  
A-E 7.08(3)(g)(h) This corner was not determined through lost-corner-proportionate methods.

A-E 7.08(3)(i) I, Jeffrey L. DeMuth, Professional Land Surveyor No. S-2656, hereby certify that the corner location on this record was determined by me or under my direction and control, and that this U.S. Public Land Survey Monument Record is correct and complete to the best of my knowledge, and belief.



SIGNATURE

November 11, 2024

DATE

43815350020

43815350020

A19

U.S. PUBLIC LAND SURVEY MONUMENT RECORD

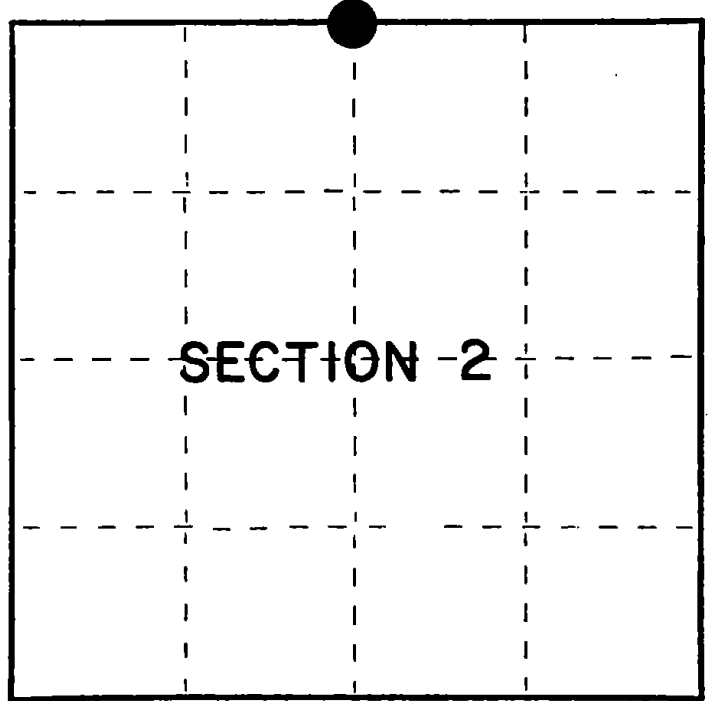
Index No. **A-19**

State of Wisconsin }  
County of Forest } ss.

I, William B. Cochrane, do hereby  
certify that on the 15th day  
of September, 1983, I found  
evidence of the North Quarter  
corner of Section 2  
Township 37, North, Range  
15 East, Fourth Principal Meridian,  
as described hereon; and that from this evidence  
I established a new monument and accessories  
as described hereon to perpetuate the original  
location of this corner.

Resident witnesses:

Tony Tillman



○ = Corner monument restored.

History of original corner establishment:

Original Government Survey in 1857 by Artemas Curtis. West Between sections  
2 and 35, 40.00 chains, set quarter corner post to sections 2 and 35. From  
which the following bear:

Y. Pine	16"	N18°E	41 lks.
Y. Pine	16"	S81°E	65 lks.

Description of corner evidence found:

6"x6" squared post, from which the following bear:

Y. Pine, stump,	N18°E	41 lks.
-----------------	-------	---------

I accept the location of the 6"x6" squared post as the original corner position,  
in concurrence with original B.T. evidence.

Description of monument and accessories I established to perpetuate the original location of this corner.

In place of 6"x6" squared post, set a 2½" diameter aluminum pipe monument, 5 feet  
long, with an aluminum cap stamped: T38N R15E, 1/4, S2, S35, T37N, 1983, S-1107.

From which the following bear:

B. Spruce	7"	N24°E,	41.84 feet
B. Spruce	5"	S82°E	11.25 feet
B. Spruce	5"	S28°W	34.76 feet
B. Spruce	4"	N48°W	26.50 feet
Steel sign post		West	1.00 feet

Dated at Hiles, Wis., this 11th day of March, 1985.

Signature William B. Cochrane Title Land Surveyor Registration No. S-1107  
(County Surveyor, Registered Land Surveyor, or other duly authorized official)

Office of Register of Deeds, County of Forest, I hereby certify that the within  
instrument was filed in this office for record on the 24th day of April, 1985  
at 1:00 o'clock P. M.

Paul Aschenbrenner  
(Register of Deeds)

By \_\_\_\_\_ Deputy

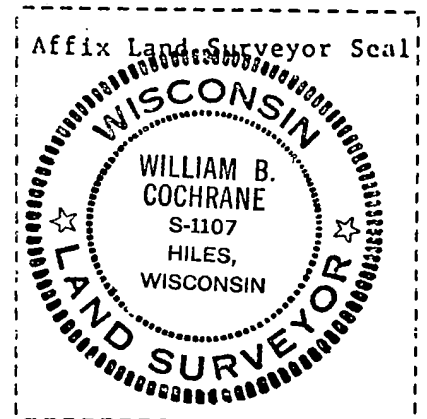
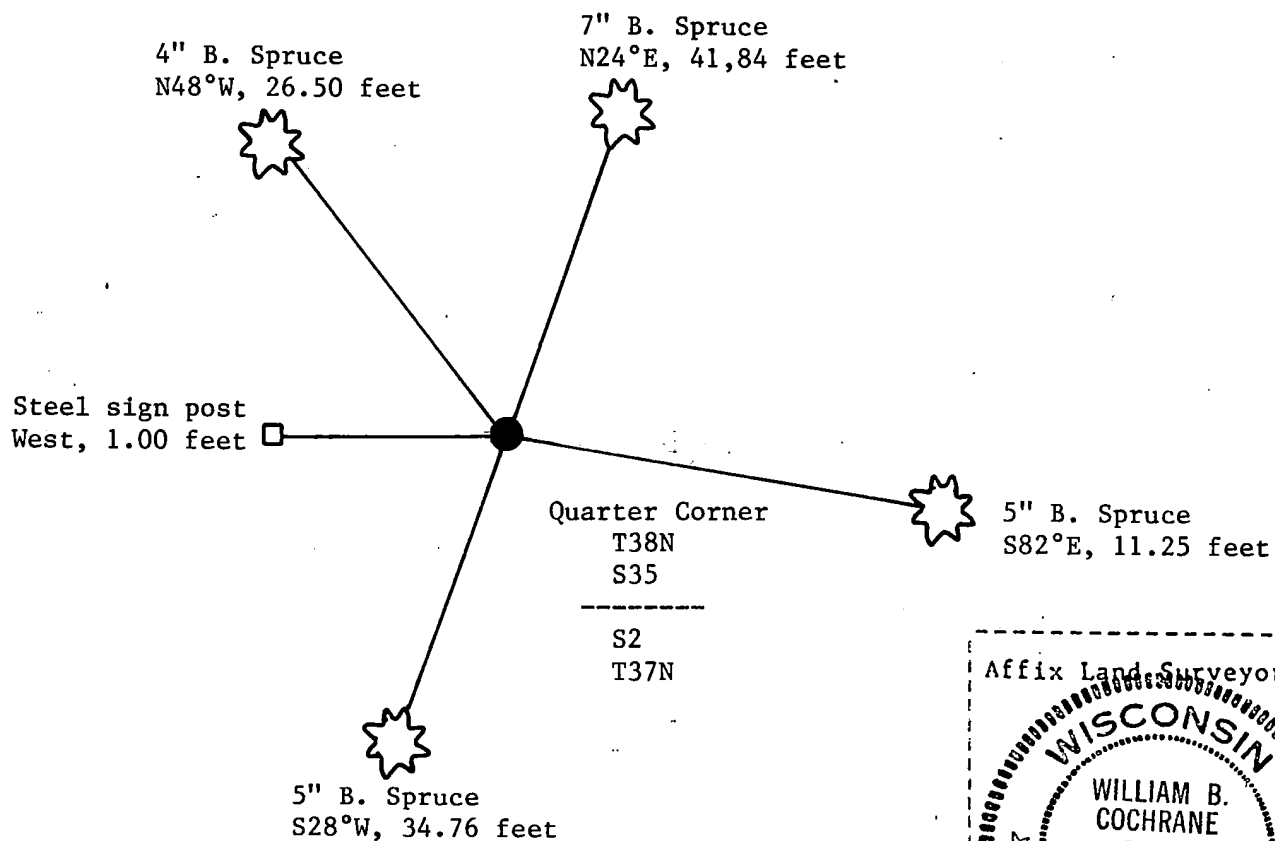
(e) Describe any material discrepancy between the location of the corner as restored or reestablished and the location of that corner as previously restored or reestablished by distance and direction. Show the discrepancy on the plan view drawing under (d), above. Show the distances between the corner as previously restored or reestablished and (1) the corner as restored or reestablished, and (2) to at least 2 of the witness monuments shown on the drawing in (d), above.

See drawing below.

(f) Was the corner restored through acceptance of (1) an obliterated evidence location, or, (2) a found perpetuated location?

Restored from original evidence.

(g&h) Was the corner reestablished through lost corner proportionate methods? If so, show the method, including the directions and distances to other public land survey corners used as evidence or used for proportioning in determining the corner location?



(i) I, William B. Cochrane  
(type or print name) certify that the corner location shown on this record was determined by me or under my direction and control and that this U.S. Public Land Survey Monument Record is correct and complete to the best of my knowledge and belief.

William B. Cochrane March 11, 1985  
Signature Date