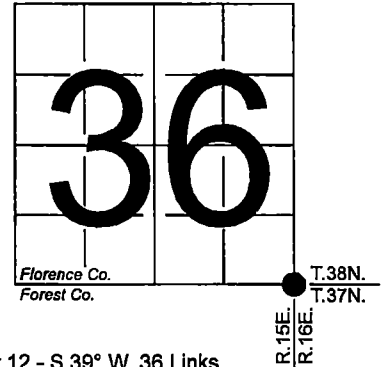


U. S. PUBLIC LAND SURVEY MONUMENT RECORD

NOTE: This form is intended and designed to fulfill all requirements of Wisconsin Administrative Code, Chapter A-E 7.08 U.S. Public Land Survey Monument Record (3) (a-i)

A-E 7.08(3)(a) Identity of corner:
Southeast Corner Section 36,
Township 38 North, Range 15 East
of the Fourth Principal Meridian,
Town of Fence, Florence County,
Wisconsin

WISCRS - FOREST COUNTY
N: 626,133.333 USft (XXX,XXX.XXX)
E: 925,790.726 USft (XXX,XXX.XXX)
Datum: NAD83 (2011)
GNSS Method RTK
GNSS Control WISCRS VRS



The coordinate value shown has been verified by the average of two or more GPS observations at a markedly different time. Coordinates shown in parenthesis are previously published values.

A-E 7.08(3)(b)

Original Surveyor: Artemas Curtis - September 1857 to October 1857

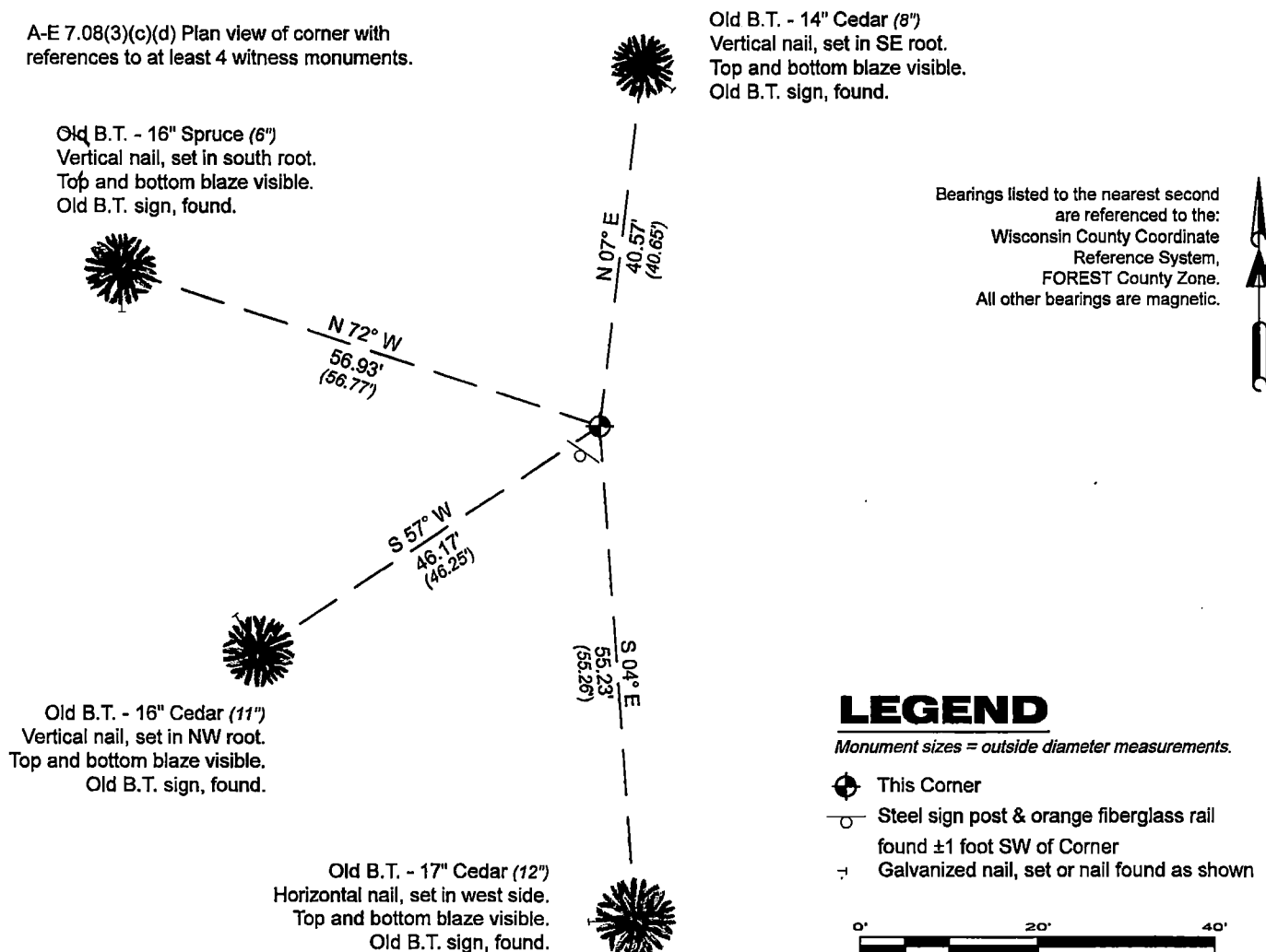
Tamarac 16 - N 28° W, 22 Links, Cedar 12 - N 29° E, 15 Links, Cedar 12 - S 54° E, 11 Links, Cedar 12 - S 39° W, 36 Links

See previous U.S. Public Land Survey Monument Record - A-25 - March 8, 1985 - Surveyor 1107 - William B. Cochrane - THENCE:

- 1986 - Surveyor 1634 - Gary Lee Pisoni - indicates this position as "2" I.D. iron pipe monument with brass cap stamped to identify the corner, found" on Florence Co. record Map 0991.
- October 26, 1987 - Surveyor 1665 - John C. Schulke - indicates this position as "2 1/2" diameter galvanized iron pipe monument, 60" long with a brass cap stamped to identify the corner" on Forest Co. record Map #371501-19871230.

April 23, 2024 - In performing the 2024 - Forest County - "PLSS Corner Remonumentation and GPS Services" project, I found a 2.25" diameter iron pipe monument with a 3" diameter brass cap stamped to identify the corner. The monument is in a cedar / spruce / balsam swamp, and extends ±30" above grade. I also found 4 of Cochranes bearing trees alive and in acceptable condition. I established 0 new reference monuments as shown below:

A-E 7.08(3)(c)(d) Plan view of corner with references to at least 4 witness monuments.



Bearings listed to the nearest second are referenced to the: Wisconsin County Coordinate Reference System, FOREST County Zone. All other bearings are magnetic.

LEGEND

Monument sizes = outside diameter measurements.

- ⊕ This Corner
- Steel sign post & orange fiberglass rail found ±1 foot SW of Corner
- ⊖ Galvanized nail, set or nail found as shown

A-E 7.08(3)(e) 1857 Surveyor set a post, 1985 Surveyor found a 2" diameter galvanized iron pipe, with brass cap stamped to identify corner, 1986 Surveyor found a similar monument, 1987 Surveyor found a 2 1/2" diameter galvanized iron pipe, with brass cap stamped to identify corner. In 2024, I found a 2.25" diameter iron pipe monument with a 3" diameter brass cap stamped to identify the corner.

A-E 7.08(3)(f) I accept this monument in good faith as a FOUND PERPETUATED LOCATION of the corner.

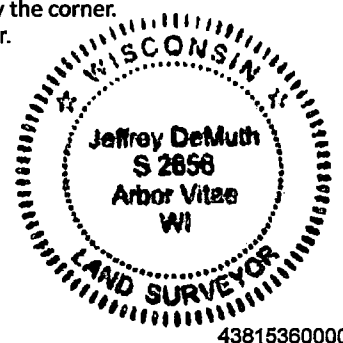
A-E 7.08(3)(g)(h) This corner was not determined through lost-corner-proportionate methods.

A-E 7.08(3)(i) I, Jeffrey L. DeMuth, Professional Land Surveyor No. S-2656, hereby certify that the corner location on this record was determined by me or under my direction and control, and that this U.S. Public Land Survey Monument Record is correct and complete to the best of my knowledge, and belief.

SIGNATURE

April 29, 2024

DATE



43815360000

A 25

U.S. PUBLIC LAND SURVEY MONUMENT RECORD

Index No. **A-1**

State of Wisconsin }
County of Forest } ss.

I William B. Cochrane, do hereby
certify that on the 6th day
of April, 1982, I found
evidence of the Northwest Section
corner of Section 6
Township 37, North, Range
16 East, Fourth Principal Meridian,
as described hereon; and that from this evidence
I established a new monument and accessories
as described hereon to perpetuate the original
location of this corner.

Resident witnesses:

David Brownell

History of original corner establishment:

Original Government Survey in 1857 by Artemas Curtis. In 1972, Jean Reswick, a Land Surveyor with the U.S. Forest Service, found a 6"x6" scribed cedar post in concurrence with original B.T. evidence. In place of post set a 2" diameter galvanized iron pipe, with a brass cap stamped: T38N, R15E, R16E, T37N, S1, S6, S31, S36, 1972, S-802. From which the following bear:

Cedar	5"	N55°E	22.79 feet	
Cedar	14"	S65°E	17.77 feet	
Cedar	12"	S73°E	7.56 feet	
Cedar	9"	N14°W	18.83 feet	Steel sign post, SW, 1.00 feet

Description of corner evidence found:

Monument as described and in place, from which the following bear:

Steel sign post	SW	1.00 feet
-----------------	----	-----------

All of the above bearing trees were cut down for the Photo Project.

Description of monument and accessories I established to perpetuate the original location of this corner.

Blazed and scribed the following new bearing trees:

Cedar	8"	N 7°E	40.65 feet
Cedar	12"	S 4°E	55.26 feet
Cedar	11"	S57°W	46.25 feet
Spruce	6"	N72°W	56.77 feet

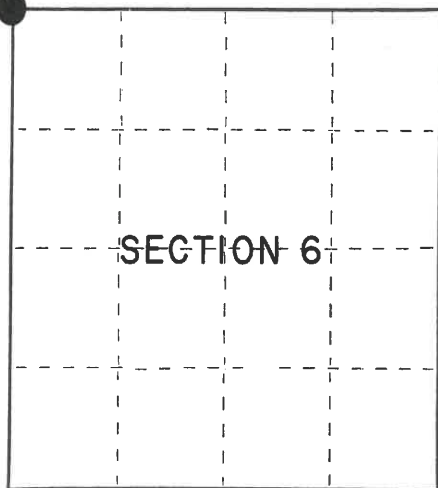
Dated at Hiles, Wis., this 8th day of March, 1985

Signature William B. Cochrane Title Land Surveyor Registration No. S-1107
(County Surveyor, Registered Land Surveyor, or other duly authorized official)

Office of Register of Deeds, County of Forest, I hereby certify that the within
instrument was filed in this office for record on the 24th day of April, 1985
at 1:00 o'clock P. M.

Paul Aschenbrenner
(Register of Deeds)

By _____ Deputy



○ = Corner monument restored.

FORM NO. 985-A

M.C. Miller Company
P.O. Box 100
Forest, Wisconsin

Stock No. 26273

Document Number 127874

43815360000

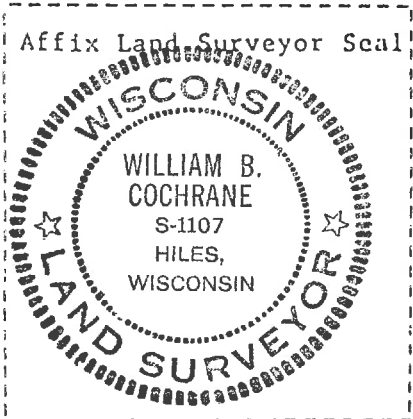
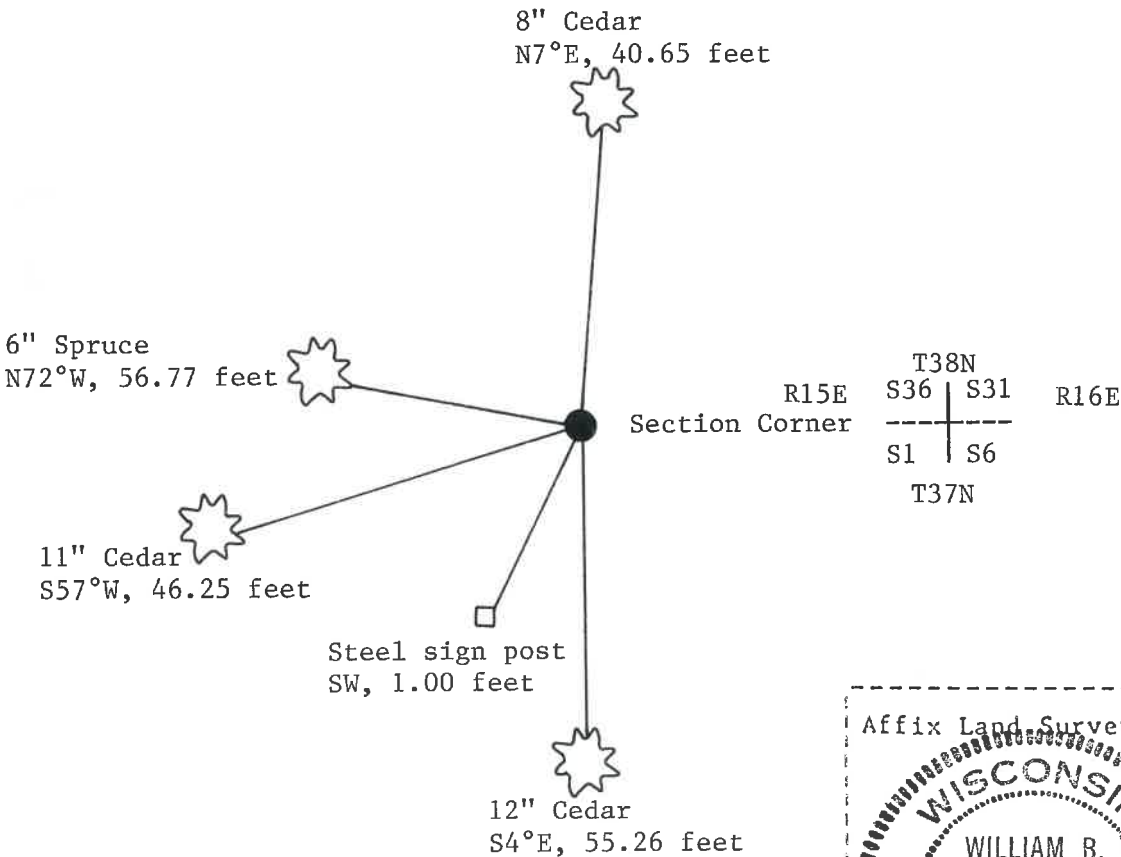
(e) Describe any material discrepancy between the location of the corner as restored or reestablished and the location of that corner as previously restored or reestablished by distance and direction. Show the discrepancy on the plan view drawing under (d), above. Show the distances between the corner as previously restored or reestablished and (1) the corner as restored or reestablished, and (2) to at least 2 of the witness monuments shown on the drawing in (d), above.

See drawing below.

(f) Was the corner restored through acceptance of (1) an obliterated evidence location, or, (2) a found perpetuated location?

Restored through acceptance of a found perpetuated location.

(g&h) Was the corner reestablished through lost corner proportionate methods? If so, show the method, including the directions and distances to other public land survey corners used as evidence or used for proportioning in determining the corner location?



(i) I, William B. Cochrane
(type or print name) certify that the corner location shown
on this record was determined by me or under my direction and
control and that this U.S. Public Land Survey Monument Record is
correct and complete to the best of my knowledge and belief.

William B. Cochrane March 8, 1985
Signature Date