

U. S. PUBLIC LAND SURVEY MONUMENT RECORD

NOTE: This form is intended and designed to fulfill all requirements of Wisconsin Administrative Code, Chapter A-E 7.08 U.S. Public Land Survey Monument Record (3) (a-i)

A-E 7.08(3)(a) Identity of corner:  
Southeast Corner Section 31,  
Township 38 North, Range 16 East  
of the Fourth Principal Meridian,  
Town of Fence, Florence County,  
Wisconsin

WISCRS - FOREST COUNTY  
N: 626,133.938 USft (XXX,XXX.XXX)  
E: 931,743.432 USft (XXX,XXX.XXX)  
Datum: NAD83 (2011)  
GNSS Method RTK  
GNSS Control WISCRS VRS



The coordinate value shown has been verified by the average of two or more GPS observations at a markedly different time. Coordinates shown in parenthesis are previously published values.

A-E 7.08(3)(b)

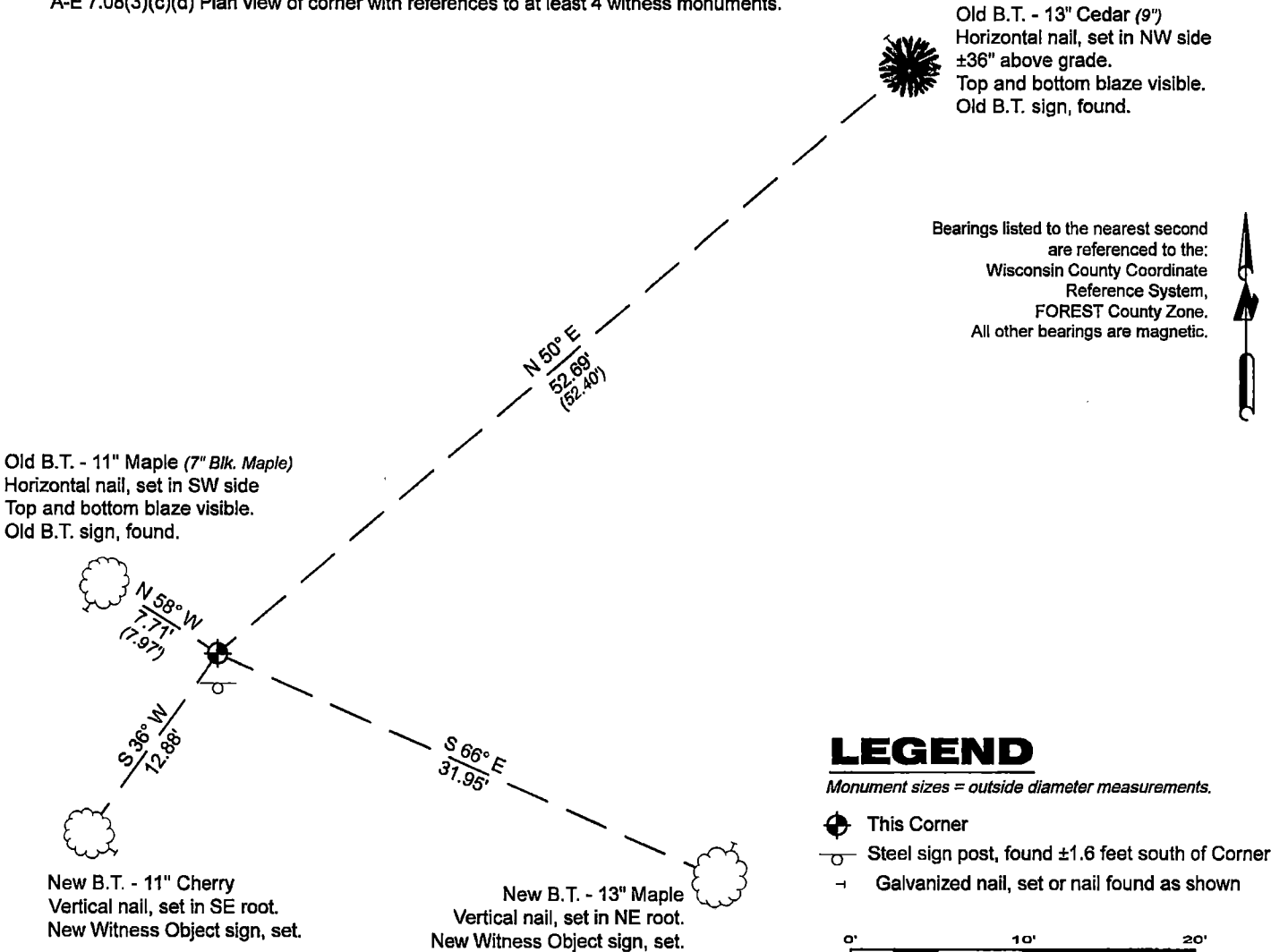
Original Surveyor: Artemas Curtis - September 1857 to October 1857  
Cedar 14 - N 65° E, 25 Links, Elm 12 - S 09° E, 40 Links, Hemlock 8 - S 20° W, 9 Links, Cedar 14 - N 26° W, 60 Links  
(bearing trees from previous monument record).

See previous U.S.Public Land Survey Monument Record - A-5 - October 23, 1990 - Surveyor 1665 - John C. Schulke - THENCE:

- November 2010 - Surveyor 2402 - Steven Applekamp - indicates this position as "USFS mon" on Florence Co.record Map M0041.

April 22, 2024 - In performing the 2024 - Forest County - "PLSS Corner Remonumentation and GPS Services" project, I found a 2.25" diameter aluminum pipe monument with a 3.25" diameter aluminum cap stamped to identify the corner. The monument is on a highland, and extends ±8" above grade. I also found 2 of Schulke's bearing trees alive and in good condition. I established 2 new reference monuments as shown below.

A-E 7.08(3)(c)(d) Plan view of corner with references to at least 4 witness monuments.



A-E 7.08(3)(e) 1857 Surveyor set a post, 1990 Surveyor found a 2" diameter drivable aluminum Berntsen monument, 2010 Surveyor found a similar monument. In 2024, I found a 2.25" diameter aluminum pipe monument with a 3.25" diameter aluminum cap stamped to identify the corner.

A-E 7.08(3)(f) I accept this monument in good faith as a FOUND PERPETUATED LOCATION of the corner.

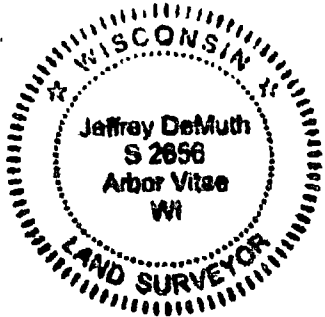
A-E 7.08(3)(g)(h) This corner was not determined through lost-corner-proportionate methods.

A-E 7.08(3)(i) I, Jeffrey L. DeMuth, Professional Land Surveyor No. S-2656, hereby certify that the corner location on this record was determined by me or under my direction and control, and that this U.S. Public Land Survey Monument Record is correct and complete to the best of my knowledge, and belief.

SIGNATURE

April 29, 2024

DATE



43816310000

43816310000

A5

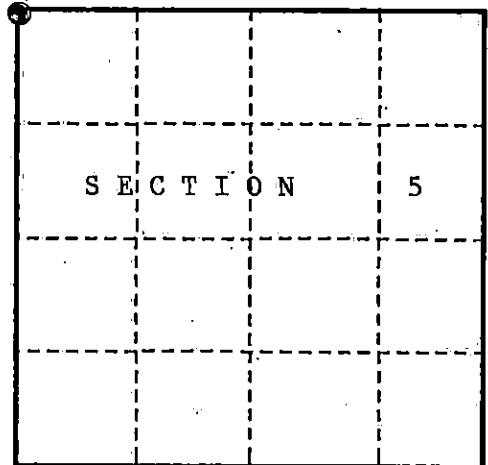
# U. S. PUBLIC LAND SURVEY MONUMENT RECORD

## INSTRUCTIONS:

This record shall show the location of the corner and shall include all of the following nine elements (a through i).

- (a) Identify the corner by reference to the U.S. public land survey system.  
O = Corner monument restored.

Section Corner Common to Sections 5, 6, 31 and 32,  
Township 37 and 38 North, Range 16 East,  
Forest County, State of Wisconsin.



- (b) Describe any record evidence, monument evidence, occupational evidence, testimonial evidence or any other material evidence you considered, and whether the monument was found or placed.

In 1857, Artemas Curtis set a wooden post at the corner and selected the following bearing trees:  
Cedar 14" N65°E 25 lks. Elm 12" S09°E 40 lks.  
Hemlock 8" S20°W 9 lks. Cedar 14" N26°W 60 lks.

In 1982, Kim Pritzlaff recovered corner and set 2" diam. driveable aluminum Bernstein monument. The following corner references:

Cedar 8" N48°E 52.28 ft. Balsam 4" S55°E 4.45 ft.  
Balsam 6" N20°W 23.70 ft. SSP S02°W 1.60 ft.

Plat is recorded in the Forest County Clerk Office in Crandon, WI.

In 1990, John Schulke recovered monument in place and the following corner references:

Cedar 9" N50°E 52.40 ft. Balsam 6" S57°E 4.47 ft.  
Balsam 8" N13°W 23.70 ft. SSP South 1.6 ft.

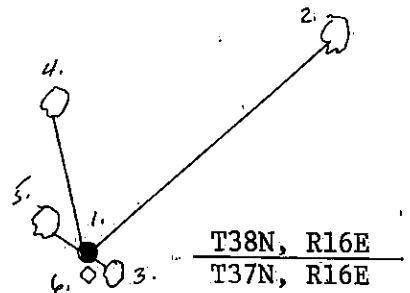
The following new corner references:

Black Maple 7" N58°W 7.97 ft.

- (c) In the plan view drawing below, provide reference ties to at least 4 witness monuments, or, if the location is within a municipality, to at least 2 witness monuments. (Witness monuments shall be made of concrete, natural stone, iron or other equally durable material.)

- (d) Show a plan view drawing depicting the relevant monuments and reference ties which is sufficient in detail to enable accurate relocation of the corner monument if the corner monument is disturbed. Indicate north.

1. 2' dia. driveable alum. Bernstein monument stamped to identify the corner.
2. Cedar 9" N50°E 52.40 ft.
3. Balsam 6" S57°E 4.47 ft.
4. Balsam 8" N13°W 23.70 ft.
5. Blk. Maple 7" N58°W 7.97 ft.
6. Steel sign post South 1.6 ft.



REGISTER'S OFFICE  
Forest County, Wis.

Received for record this 19th day  
of December A.D., 1990 at  
8:45 o'clock A.M. and recorded  
in Vol. Corner Restorations  
page A-5

Register of Deeds

43816310000

A-5 20-12

(e) Describe any material discrepancy between the location of the corner as restored or reestablished and the location of that corner as previously restored or reestablished by distance and direction. Show the discrepancy on the plan view drawing under (d), above. Show the distances between the corner as previously restored or reestablished and (1) the corner as restored or reestablished, and (2) to at least 2 of the witness monuments shown on the drawing in (d), above.

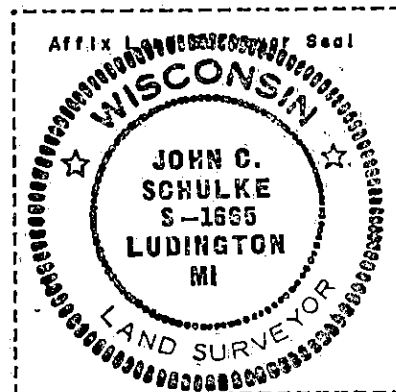
NONE.

(f) Was the corner restored through acceptance of (1) an obliterated evidence location, or, (2) a found perpetuated location?

(2) found perpetuated location.

(g & h) Was the corner reestablished through lost corner proportionate methods? If so, show the method, including the directions and distances to other public land survey corners used as evidence or used for proportioning in determining the corner location?

No.



(1) I, John Schulke (Register Land Surveyor)

(type or print name) certify that the corner location shown on this record was determined by me or under my direction and control and that this U.S. Public Land Survey Monument Record is correct and complete to the best of my knowledge and belief.

John Schulke  
Signature

10/23/90  
Date

CERTIFICATE READY FOR FILING:

Ralph B. Staege  
District Ranger