

U. S. PUBLIC LAND SURVEY MONUMENT RECORD

NOTE: This form is intended and designed to fulfill all requirements of Wisconsin Administrative Code, Chapter A-E 7.08 U.S. Public Land Survey Monument Record (3) (a-l)

A-E 7.08(3)(a) Identity of corner:
Southeast Corner Section 32,
Township 38 North, Range 16 East
of the Fourth Principal Meridian,
Town of Fence, Florence County,
Wisconsin

WISCRS - FOREST COUNTY
N: 626,125.846 USft (XXX,XXX.XXX)
E: 937,017.475 USft (XXX,XXX.XXX)
Datum: NAD83 (2011)
GNSS Method RTK
GNSS Control WISCORS VRS



The coordinate value shown has been verified by the average of two or more GPS observations at a markedly different time. Coordinates shown in parenthesis are previously published values.

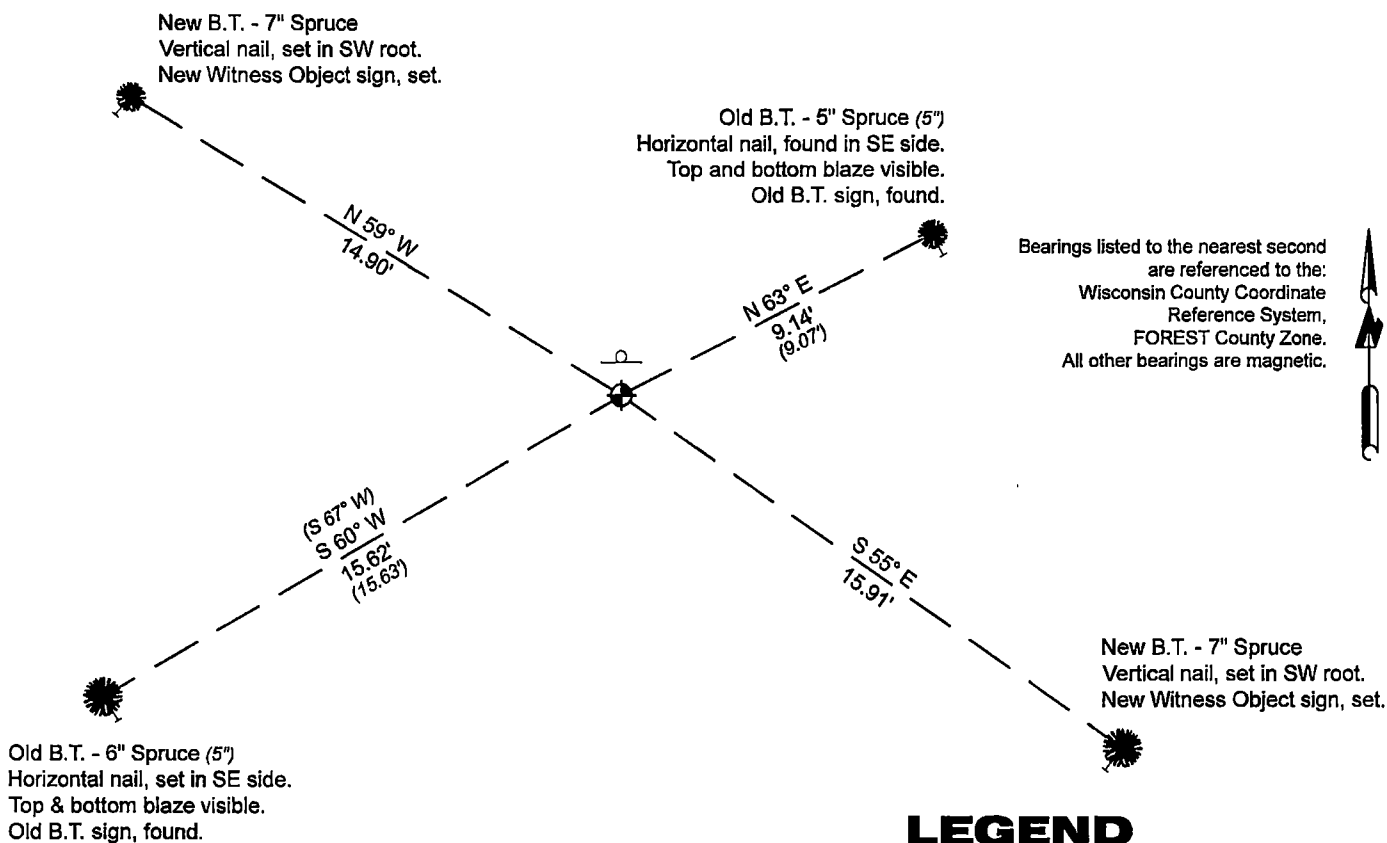
A-E 7.08(3)(b)

Original Surveyor: Artemas Curtis - September 1857 to October 1857
Spruce 8 - N 28° W, 26 Links, Tamarac 10 - N 46° E, 36 Links, White Pine 16 - S 25° E, 20 Links, Hemlock 14, S 47°W, 34 Links
(bearing trees from previous monument record).

See previous U.S.Public Land Survey Monument Record - A-9 - September 21, 1990 - Surveyor 1665 - John C. Schulke - THENCE:

April 22, 2024 - In performing the 2024 - Forest County - "PLSS Corner Remonumentation and GPS Services" project, I found a 2.5" diameter iron pipe monument with a 3" diameter brass cap stamped to identify the corner. The monument is at the edge of a spruce swamp, and is ±6" above grade. I also found 2 of Schulke's bearing trees alive and in acceptable condition. I established 2 new reference monuments as shown below.

A-E 7.08(3)(c)(d) Plan view of corner with references to at least 4 witness monuments.

**LEGEND**

Monument sizes = outside diameter measurements.

- ⊕ This Corner
- ⊖ Steel sign post, found ±0.5 feet north of Corner
- ⊙ Galvanized nail, set or nail found as shown



A-E 7.08(3)(e) 1857 Surveyor set a post, 1990 Surveyor found a 2" inside diameter galvanized iron pipe, with brass cap stamped to identify corner. In 2024, I found a 2.5" diameter iron pipe monument with a 3" diameter brass cap stamped to identify the corner.

A-E 7.08(3)(f) I accept this monument in good faith as a FOUND PERPETUATED LOCATION of the corner.

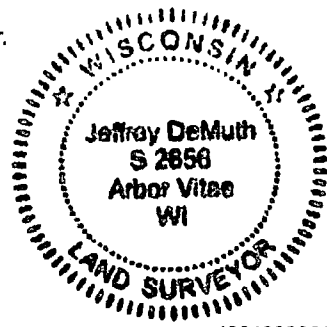
A-E 7.08(3)(g)(h) This corner was not determined through lost-corner-proportionate methods.

A-E 7.08(3)(i) I, Jeffrey L. DeMuth, Professional Land Surveyor No. S-2656, hereby certify that the corner location on this record was determined by me or under my direction and control, and that this U.S. Public Land Survey Monument Record is correct and complete to the best of my knowledge, and belief.

SIGNATURE

April 29, 2024

DATE



43816320000

43816320000

A9

CERTIFIED LAND CORNER RESTORATION

State of Wisconsin

County of Forest

} ss.

I, Jean F. Resvick, do hereby certify that on the 31st day of October, 1974, I found evidence of the northeast section corner of Section 5 Township 37 North, Range 16 East, Fourth Principal Meridian, as described hereon; and that from this evidence I established a new monument and accessories as described hereon to perpetuate the original location of this corner:

Description of original monument and accessories and subsequent restorations:

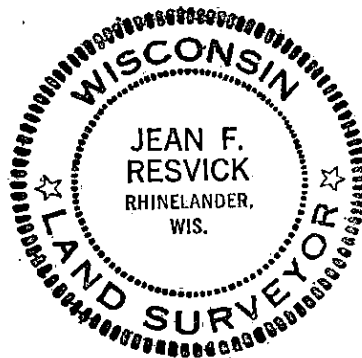
Surveyed in 1857 by Artemas Curtis
80 chains west between sections 4 and 33 set post
Spruce 8, N28W, 26 lks
Tamarack 10, N64E, 36 lks
White pine 16, S25E, 20 lks
Hemlock 14, S47W, 34 lks
0.50 chains west leave swamp bears NNW & SE

Description of corner evidence found:

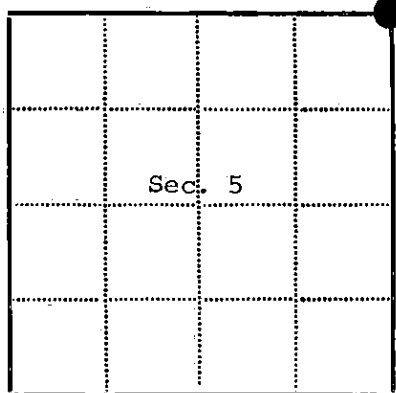
White pine stump, scribed OBT (this is not original scribing)
Hemlock, fallen, has burned out face blaze
At a point N25W, 20 lks from white pine the hemlock bears S49E, 34 lks
A tamarack stump bears N64E, 36 lks from point
A spruce stump bears N28W, 26 lks from point
All four stumps found check to a common point by recorded distances and 3 bearings.

Description of monument and accessories I established to perpetuate the location of this corner:

At position for the section corner set a 2 inch inside diameter galvanized iron pipe, 3 feet long, filled with concrete with a brass cap stamped, T38N, R16E, S32, S33, S5, S4, T37N, 1975, S-802
Blazed and scribed the following new bearing trees:
Spruce 3, N67E, 9.07 feet
Spruce 8, S38E, 13.04 feet
Spruce 6, S51W, 16.07 feet
Spruce 4, N55W, 12.38 feet
Set steel sign post 0.50 feet north of monument



43816320000



● - Corner monument restored

□ -

Resident witnesses.....

Dated at Rhinelanders Wisconsin, this 20 day of March 1975.Signature Jean F. Resvick Title Land Surveyor
(County Surveyor, Registered Land Surveyor, or other duly authorized official)Surveyors Registration No. S-802 Document Number 106872Office of Register of Deeds County of ForestI hereby certify that the within instrument was filed in this office for record on the 31st day of March 1975, and was filed in Book No. Corner Page No. A-9 of County Records.Signature Eugene Statyn Title Register of DeedsTownship 37 North, Range 16 East, Section 5, Index No. A-9, Page No. 9

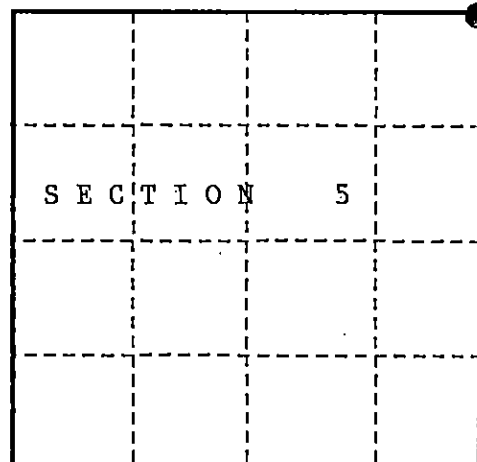
U. S. PUBLIC LAND SURVEY MONUMENT RECORD

INSTRUCTIONS:

This record shall show the location of the corner and shall include all of the following nine elements (a through i).

- (a) Identify the corner by reference to the U.S. public land survey system.
○ = Corner monument restored.

Section Corner Common to Sections 4, 5, 32 and 33,
Township 37 and 38 North, Range 16 East,
Forest County, State of Michigan.



- (b) Describe any record evidence, monument evidence, occupational evidence, testimonial evidence or any other material evidence you considered, and whether the monument was found or placed.

In 1857, Artemas Curtis set a wooden post at the corner and established the following bearing trees:

Spruce	8" bears N28°W, 26 lks.	Tamarack	10" bears N64°E, 36 lks.
White pine	16" bears S25°E, 20 lks.	Hemlock	14" bears S47°W, 34 lks.

In 1975, Jean Resvick found all bearing trees and set a 2" dia. galvanized iron pipe filled with concrete with a brass cap stamped to identify the corner. The following corner references:

Spruce	3" bears N67°E, 9.07 ft.	Spruce	8" bears S38°E, 13.04 ft.
Spruce	6" bears S51°W, 16.07 ft.	Spruce	4" bears N55°W, 12.38 ft.

In 1982, Kim Pritzlaff recovered monument in place and the 1975 corner references described on the Certified Land Corner Restoration form filed in the Forest County Register of Deed's Office, Document #106872.

In 1990, John Schulke recovered monument in place and the following corner references:

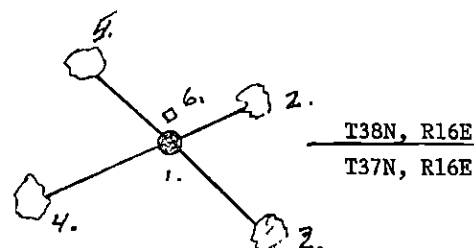
Spruce	5" bears N63°E, 9.07 ft.	Spruce	11" bears S47°E, 13.03 ft.
Spruce	8" bears N53°W, 12.46 ft.	Steel sign post	bears North, 0.4 ft.

The following new corner references:

Spruce 5" bears S67°W, 15.63 ft.

- (c) In the plan view drawing below, provide reference ties to at least 4 witness monuments, or, if the location is within a municipality, to at least 2 witness monuments. (witness monuments shall be made of concrete, natural stone, iron or other equally durable material.)

- (d) Show a plan view drawing depicting the relevant monuments and reference ties which is sufficient in detail to enable accurate relocation of the corner monument if the corner monument is disturbed. Indicate north.



1. 2" dia. galvanized iron pipe with brass cap stamped to identify the corner.

- | | | | |
|--------------------|-------|---------|-----------|
| 2. Spruce | 5" | N63°E | 9.07 ft. |
| 3. Spruce | 11" | S47°E | 13.03 ft. |
| 4. Spruce | 5" | S67°W | 15.63 ft. |
| 5. Spruce | 8" | N53°W | 12.46 ft. |
| 6. Steel sign post | North | 0.4 ft. | |

REGISTER'S OFFICE
Forest County, Wis.

Received for record this 19th day
of December, A.D., 1990 at
8:45 o'clock A.M. and recorded
in Vol. Corner Restorations
page A-9
Paul H. Schenck
Register of Deeds

43816320000

- (e) Describe any material discrepancy between the location of the corner as restored or reestablished and the location of that corner as previously restored or reestablished by distance and direction. Show the discrepancy on the plan view drawing under (d), above. Show the distances between the corner as previously restored or reestablished and (1) the corner as restored or reestablished, and (2) to at least 2 of the witness monuments shown on the drawing in (d), above.

NONE:

- (f) Was the corner restored through acceptance of (1) an obliterated evidence location, or, (2) a found perpetuated location?

(2) found perpetuated location.

- (g & h) Was the corner reestablished through lost corner proportionate methods? If so, show the method, including the directions and distances to other public land survey corners used as evidence or used for proportioning in determining the corner location?

NO.

(1) I, John Schulke a Register Land Surveyor

(type or print name) certify that the corner location shown on this record was determined by me or under my direction and control and that this U.S. Public Land Survey Monument Record is correct and complete to the best of my knowledge and belief.

John Schulke
Signature

9/21/90
Date

CERTIFICATE READY FOR FILING:

Dale B. Stage
District Ranger

