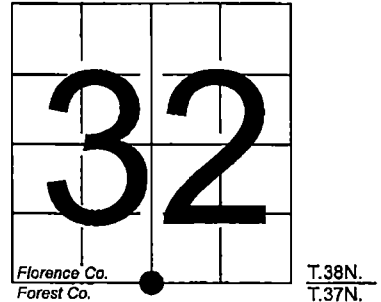


U. S. PUBLIC LAND SURVEY MONUMENT RECORD

NOTE: This form is intended and designed to fulfill all requirements of Wisconsin Administrative Code, Chapter A-E 7.08 U.S. Public Land Survey Monument Record (3) (a-i)

A-E 7.08(3)(a) Identity of corner:
South 1/4 Corner Section 32,
Township 38 North, Range 16 East
of the Fourth Principal Meridian,
Town of Fence, Florence County,
Wisconsin

WISCRS - FOREST COUNTY
N: 626,131.011 USft (XXX,XXX.XXX)
E: 934,386.475 USft (XXX,XXX.XXX)
Datum: NAD83 (2011)
GNSS Method RTK
GNSS Control WISCORS VRS



The coordinate value shown has been verified by the average of two or more GPS observations at a markedly different time. Coordinates shown in parenthesis are previously published values.

A-E 7.08(3)(b)

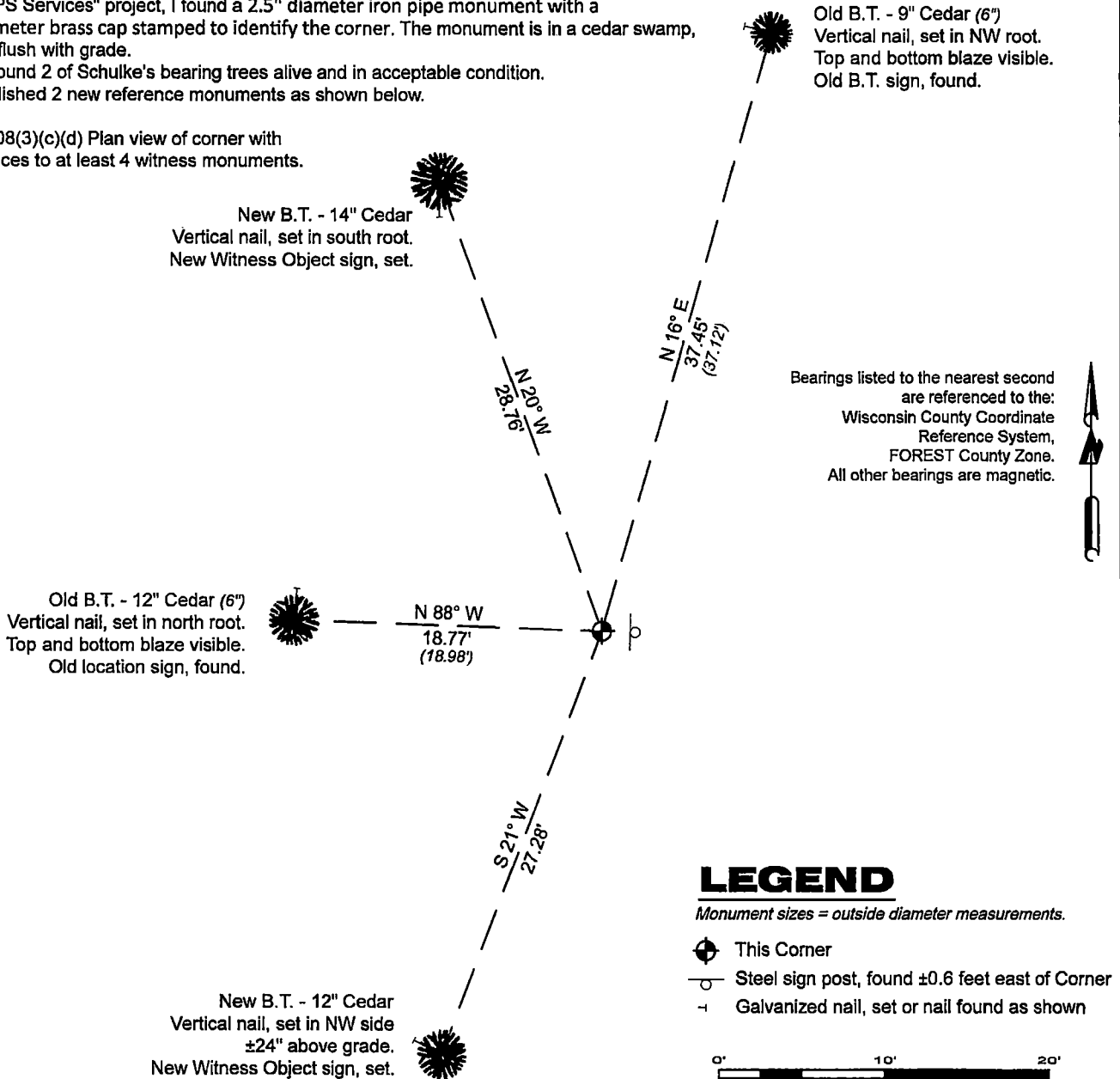
Original Surveyor: Artemas Curtis - September 1857 to October 1857
Tamarac 10 - N 10° E, 15 Links, Tamarac 8 - S 27° W, 20 Links (bearing trees from previous monument record).

See previous U.S. Public Land Survey Monument Record - A-7 - September 21, 1990 - Surveyor 1665 - John C. Schulke - THENCE:

April 22, 2024 - In performing the 2024 - Forest County - "PLSS Corner Remonumentation and GPS Services" project, I found a 2.5" diameter iron pipe monument with a 3" diameter brass cap stamped to identify the corner. The monument is in a cedar swamp, and is flush with grade.

I also found 2 of Schulke's bearing trees alive and in acceptable condition.
I established 2 new reference monuments as shown below.

A-E 7.08(3)(c)(d) Plan view of corner with
references to at least 4 witness monuments.

**LEGEND**

Monument sizes = outside diameter measurements.

- ⊕ This Corner
- Steel sign post, found ±0.6 feet east of Corner
- Galvanized nail, set or nail found as shown

A-E 7.08(3)(e) 1857 Surveyor set a post, 1990 Surveyor found a 2" inside diameter galvanized iron pipe, with brass cap stamped to identify corner. In 2024, I found a 2.5" diameter iron pipe monument with a 3" diameter brass cap stamped to identify the corner.

A-E 7.08(3)(f) I accept this monument in good faith as a FOUND PERPETUATED LOCATION of the corner.

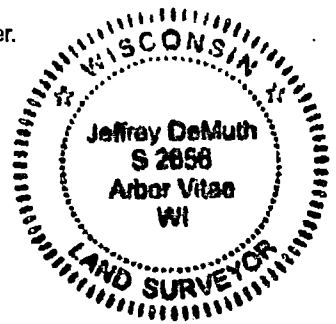
A-E 7.08(3)(g)(h) This corner was not determined through lost-corner-proportionate methods.

A-E 7.08(3)(i) I, Jeffrey L. DeMuth, Professional Land Surveyor No. S-2656, hereby certify that the corner location on this record was determined by me or under my direction and control, and that this U.S. Public Land Survey Monument Record is correct and complete to the best of my knowledge, and belief.

SIGNATURE

April 29, 2024

DATE



43816320020

43816320020

A7

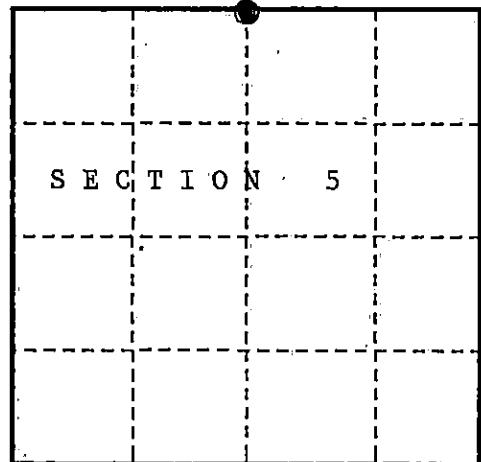
U. S. PUBLIC LAND SURVEY MONUMENT RECORD

INSTRUCTIONS:

This record shall show the location of the corner and shall include all of the following nine elements (a through i).

- (a) Identify the corner by reference to the U.S. public land survey system.
 O = Corner monument restored.

Quarter Corner Common to Sections 5 and 32,
 Township 37 and 38 North, Range 16 East,
 Forest County, State of Wisconsin.



- (b) Describe any record evidence, monument evidence, occupational evidence, testimonial evidence or any other material evidence you considered, and whether the monument was found or placed.

In 1857, Artemas Curtis set a wooden post at the corner and selected the following bearing trees: Tamarack 10" bears N10°E, 15 lks. Tamarack 8" S27°W, 20 lks.

In 1974, Jean Resvick recovered a wooden post at the corner and the following bearing trees:
 Dead Tamarack 12" bears N10°E, 11.0 ft. Dead Tamarack bears S27°W, 20 lks.
 Cedar 8" bears S85°W, 18.97 ft.

Replaced the wooden post with 2" dia. galvanized iron pipe, filled with concrete, with a brass cap stamped to identify the corner. The following corner references:

Balsam 4" bears N39°E, 13.23 ft. Balsam 3" bears S23°E, 14.57 ft.
 Cedar 8" bears S85°E, 18.97 ft. Steel sign post bears East, 0.5 ft.

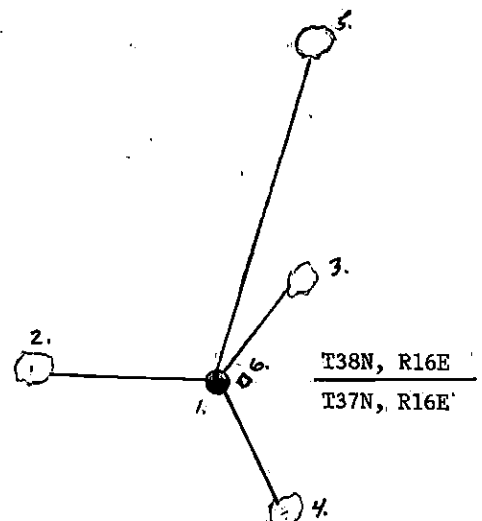
In 1982, Kim Pritzlaff recovered monument in place and the 1974 corner references described on the Certified Land Corner Restoration form filed in the Forest County Register of Deed's Office, Document #105816.

In 1990, John Schulke recovered monument in place and the following corner references:
 Cedar 12" bears N88°W, 18.98 ft. Balsam 8" bears N38°E, 13.77 ft.
 Balsam 6" bears S27°E, 14.76 ft. Steel sign post bears East 0.6 ft.
 The following new corner references:
 Cedar 6" bears N16°E, 37.12 ft.

- (c) In the plan view drawing below, provide reference ties to at least 4 witness monuments, or, if the location is within a municipality, to at least 2 witness monuments. (witness monuments shall be made of concrete, natural stone, iron or other equally durable material.)

- (d) Show a plan view drawing depicting the relevant monuments and reference ties which is sufficient in detail to enable accurate relocation of the corner monument if the corner monument is disturbed. Indicate north.

1. 2" dia. galvanized iron pipe with a brass cap stamped to identify the corner.
2. Cedar 12" N88°W 18.98 ft.
3. Balsam 8" N38°E 13.77 ft.
4. Balsam 6" S27°E 14.76 ft.
5. Cedar 6" N16°E 37.12 ft.
6. Steel sign post East 0.6 ft.



REGISTER'S OFFICE
 Forest County, Wis.

Received for record this 12 day
 of December, A.D., 1990 at
8:45 o'clock A.M. and recorded
 in Vol. Corner Restorations
 page A-7

Register of Deeds

43816320020

A-7

A-7

- (e) Describe any material discrepancy between the location of the corner as restored or reestablished and the location of that corner as previously restored or reestablished by distance and direction. Show the discrepancy on the plan view drawing under (d). above. Show the distances between the corner as previously restored or reestablished and (1) the corner as restored or reestablished, and (2) to at least 2 of the witness monuments shown on the drawing in (d). above.

Found discrepancy in location of Cedar bearing tree on the Certificate, Document #105816 and plat by Kim Pritzlaff of Section 5 Surveyed in 1982.

- (f) Was the corner restored through acceptance of (1) an obliterated evidence location, or, (2) a found perpetuated location?

(2) found perpetuated location.

- (g & h) Was the corner reestablished through lost corner proportionate methods? If so, show the method, including the directions and distances to other public land survey corners used as evidence or used for proportioning in determining the corner location?

NO.

(1) I, John Schulke a Register Land Surveyor

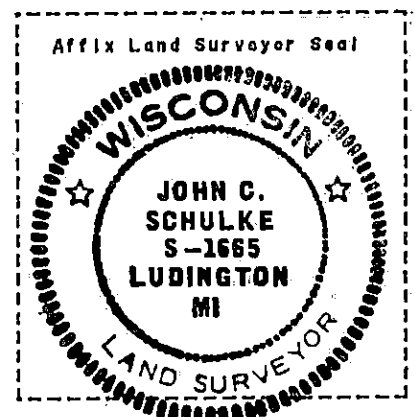
(type or print name) certify that the corner location shown on this record was determined by me or under my direction and control and that this U.S. Public Land Survey Monument Record is correct and complete to the best of my knowledge and belief.

John Schulke
Signature

9/21/90
Date

CERTIFICATE READY FOR FILING:

Dale D. Staege
District Ranger



CERTIFIED LAND CORNER RESTORATION

State of Wisconsin

County of Forest

} ss.

I Jean Resvick, do hereby certify that on the 25 day of July, 19 73, I found evidence of the south quarter corner of section 32 Township 38 north 37 North, Range 16 east, Fourth Principal Meridian, as described hereon; and that from this evidence I established a new monument and accessories as described hereon to perpetuate the original location of this corner:

Description of original monument and accessories and subsequent restorations:

Surveyed in 1857 by Artemas Curtis.
West between sections 5 and 32. 40.00 chains set 1/4 section post.
tamarac, 10", N10°E, 15 lks.
Tamarac, 8", S27°W, 20 lks.
Leave swamp, 3.0 chains west bears NE

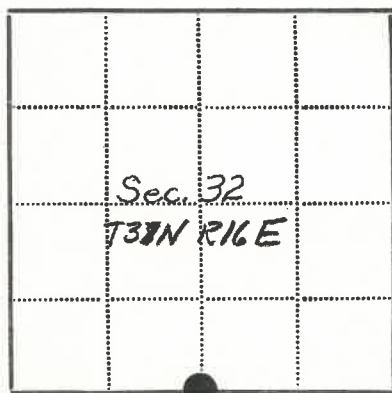
Description of corner evidence found:

Squared wood post.
Fallen 12" tamarac N10°E, 11 feet
Cedar, 8", S85°W, 18.97 ft.
Fallen tamarac, 5.27°W, 20 lks.
Leave swamp, 3.0 chains west bears NE

Description of monument and accessories I established to perpetuate the location of this corner:

At position of corner set a 2 inch inside diam. galvanized pipe, 5 feet long, filled with concrete, with a brass cap marked: T38N, R16E, 1/4, S32, S5, T37N, 1974, S-802
From which the following bear:
Balsam, 4" N39°E, 13.23 feet
Balsam, 3", S23°E, 14.57 feet
Cedar, 8", S85°E, 18.97 feet, bearing tree found
Steel sign post, east, 0.50 feet

438163200Z0



- - Corner monument restored
□ -

Resident witnesses

Dated at Rhineland Wisconsin, this 17 day of May 19 74.Signature Jean F. Resvick Title Land Surveyor
(County Surveyor, Registered Land Surveyor, or other duly authorized official)Surveyors Registration No. S-802 **DOCUMENT NUMBER 105816**Office of Register of Deeds County of Fore st

I hereby certify that the within instrument was filed in this office for record on the 8th day of August 19 74, and was filed in Book Corner No. Restorations Page No. Z-7 of County Records.

Signature Eugene Steiny Title

Township 37 North 38N, Range 16E, Section 32, Index No. Z-7, Page No.