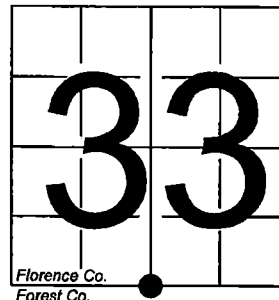


U. S. PUBLIC LAND SURVEY MONUMENT RECORD

NOTE: This form is intended and designed to fulfill all requirements of Wisconsin Administrative Code, Chapter A-E 7.08 U.S. Public Land Survey Monument Record (3) (a-i)

A-E 7.08(3)(a) Identity of corner:
South 1/4 Corner Section 33,
Township 38 North, Range 16 East
of the Fourth Principal Meridian,
Town of Fence, Florence County,
Wisconsin

WISCRS - FOREST COUNTY
N: 626,124.180 USft (XXX,XXX.XXX)
E: 939,659.149 USft (XXX,XXX.XXX)
Datum: NAD83 (2011)
GNSS Method RTK
GNSS Control WISCORS VRS



The coordinate value shown has been verified by the average of two or more GPS observations at a markedly different time. Coordinates shown in parenthesis are previously published values.

A-E 7.08(3)(b)

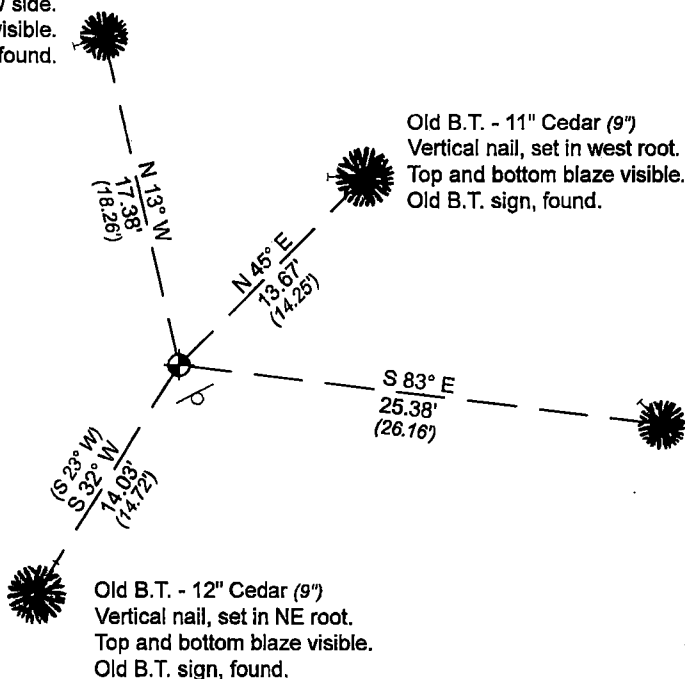
Original Surveyor: Artemas Curtis - September 1857 to October 1857
Spruce 10 - N 13° W, 27 Links, Spruce 8 - N 42° E, 22 Links (bearing trees from previous monument record).

See previous U.S. Public Land Survey Monument Record - A-11 - October 23, 1990 - Surveyor 1665 - John C. Schulke - THENCE:

April 16, 2024 - In performing the 2024 - Forest County - "PLSS Corner Remonumentation and GPS Services" project, I found a 2.5" diameter aluminum pipe monument with a 3.25" diameter aluminum cap stamped to identify the corner. The monument is in a cedar swamp, and is ±18" above grade. I also found all 4 of Schulke's bearing trees alive and in acceptable condition. I established 0 new reference monuments as shown below.

A-E 7.08(3)(c)(d) Plan view of corner with references to at least 4 witness monuments.

Old B.T. - 9" Cedar (6")
Horizontal nail, set in SW side.
Top and bottom blaze visible.
Old B.T. sign, found.

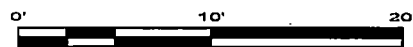


Bearings listed to the nearest second
are referenced to the:
Wisconsin County Coordinate
Reference System,
FOREST County Zone.
All other bearings are magnetic.

LEGEND

Monument sizes = outside diameter measurements.

- This Corner
- Steel sign post, found ±1.5 foot SE of Corner
- Galvanized nail, set or nail found as shown



A-E 7.08(3)(e) 1857 Surveyor set a post, 1990 Surveyor found a 2" diameter drivable aluminum Berntsen monument. In 2024, I found a 2.5" diameter aluminum pipe monument with a 3.25" diameter aluminum cap stamped to identify the corner.

A-E 7.08(3)(f) I accept this monument in good faith as a FOUND PERPETUATED LOCATION of the corner.

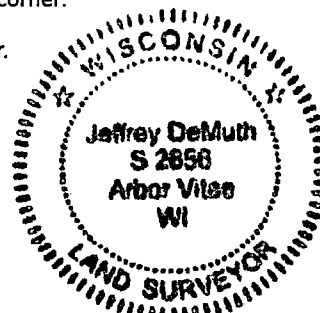
A-E 7.08(3)(g)(h) This corner was not determined through lost-corner-proportionate methods.

A-E 7.08(3)(i) I, Jeffrey L. DeMuth, Professional Land Surveyor No. S-2656, hereby certify that the corner location on this record was determined by me or under my direction and control, and that this U.S. Public Land Survey Monument Record is correct and complete to the best of my knowledge, and belief.

SIGNATURE

April 17, 2024

DATE



43816330020

43816330020

A11

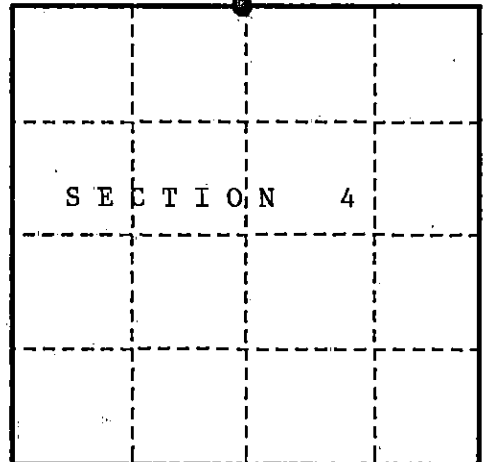
U. S. PUBLIC LAND SURVEY MONUMENT RECORD

INSTRUCTIONS:

This record shall show the location of the corner and shall include all of the following nine elements (a through i).

- (a) Identify the corner by reference to the U.S. public land survey system.
○ = Corner monument restored.

Quarter Corner Common to Sections 4 and 33,
Township 37 and 38 North, Range 16 East,
Forest County, State of Wisconsin.



- (b) Describe any record evidence, monument evidence, occupational evidence, testimonial evidence or any other material evidence you considered, and whether the monument was found or placed.

In 1857, Artemas Curtis set a wooden post at the corner and selected the following bearing trees:

Spruce	10"	N13°W	27 lks.
Spruce	8"	N42°E	22 lks.

In 1982, Kim Pritzlaff recovered corner and set 2" dia. driveable alum. Berntsen monument.
The following corner references:

Forest Service Tag	N20°W	21.50 ft.
Cedar 9"	S80°E	13.98 ft.
Steel sign post	South	1.65 ft.
Cedar 8"	N25°E	26.15 ft.

In 1990, John Schulke recovered monument in place and the following corner references:

Cedar 9"	N45°E	14.25 ft.	Tree with tag (dead) NW	21.50 ft.
Cedar 10"	S83°E	26.16 ft.	Steel sign post	South 1.6 ft.

The following new corner references:

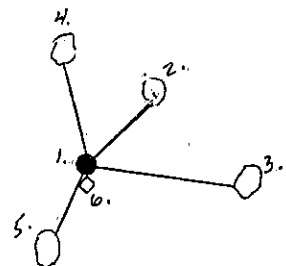
Cedar 6"	N13°W	18.26 ft.
Cedar 9"	S23°W	14.72 ft.

- (c) In the plan view drawing below, provide reference ties to at least 4 witness monuments, or, if the location is within a municipality, to at least 2 witness monuments. (witness monuments shall be made of concrete, natural stone, iron or other equally durable material.)

- (d) Show a plan view drawing depicting the relevant monuments and reference ties which is sufficient in detail to enable accurate relocation of the corner monument if the corner monument is disturbed. Indicate north.

- 2" dia. driveable alum. monument stamped to identify the corner.
- Cedar 9" N45°E 14.25 ft.
- Cedar 10" S83°E 26.16 ft.
- Cedar 6" N13°W 18.26 ft.
- Cedar 9" S23°W 14.72 ft.
- Steel sign post South 1.60 ft.

T38N, R16E
T37N, R16E



REGISTER'S OFFICE
Forest County, Wis.

Received for record this 19th day
of December A.D., 1990 at
8:45 o'clock A.M. and recorded

In Vol. Corner Restorations
page A-11
Sam Alexander
Register of Deeds

43816330020

- (e) Describe any material discrepancy between the location of the corner as restored or reestablished and the location of that corner as previously restored or reestablished by distance and direction. Show the discrepancy on the plan view drawing under (d), above. Show the distances between the corner as previously restored or reestablished and (1) the corner as restored or reestablished, and (2) to at least 2 of the witness monuments shown on the drawing in (d), above.

NONE

- (f) Was the corner restored through acceptance of (1) an obliterated evidence location, or, (2) a found perpetuated location?

(2) found perpetuated location.

- (g & h) Was the corner reestablished through lost corner proportionate methods? If so, show the method, including the directions and distances to other public land survey corners used as evidence or used for proportioning in determining the corner location?

No.

(1) I, John Schulke (Register Land Surveyor)

(type or print name) certify that the corner location shown on this record was determined by me or under my direction and control and that this U.S. Public Land Survey Monument Record is correct and complete to the best of my knowledge and belief.

John Schulke
Signature

10/23/90

Date

CERTIFICATE READY FOR FILING:

Dale D. Staege
District Ranger

