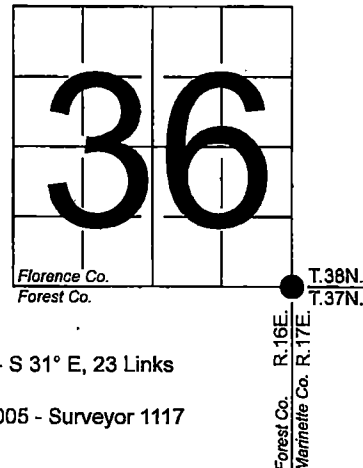


## U. S. PUBLIC LAND SURVEY MONUMENT RECORD - ADDENDUM

NOTE: This form is intended and designed to fulfill all requirements of Wisconsin Administrative Code, Chapter A-E 7.08 U.S. Public Land Survey Monument Record (3) (a-i)

A-E 7.08(3)(a) Identity of corner:  
Southeast Corner Section 36,  
Township 38 North, Range 16 East  
of the Fourth Principal Meridian,  
Town of Fence, Florence County,  
Wisconsin

WISCRS - FOREST COUNTY  
N: 626,110.152 USft (XXX,XXX.XXX)  
E: 958,137.663 USft (XXX,XXX.XXX)  
Datum: NAD83 (2011)  
GNSS Method RTK  
GNSS Control WISCRS VRS



The coordinate value shown has been verified by the average of two or more GPS observations at a markedly different time. Coordinates shown in parenthesis are previously published values.

A-E 7.08(3)(b)

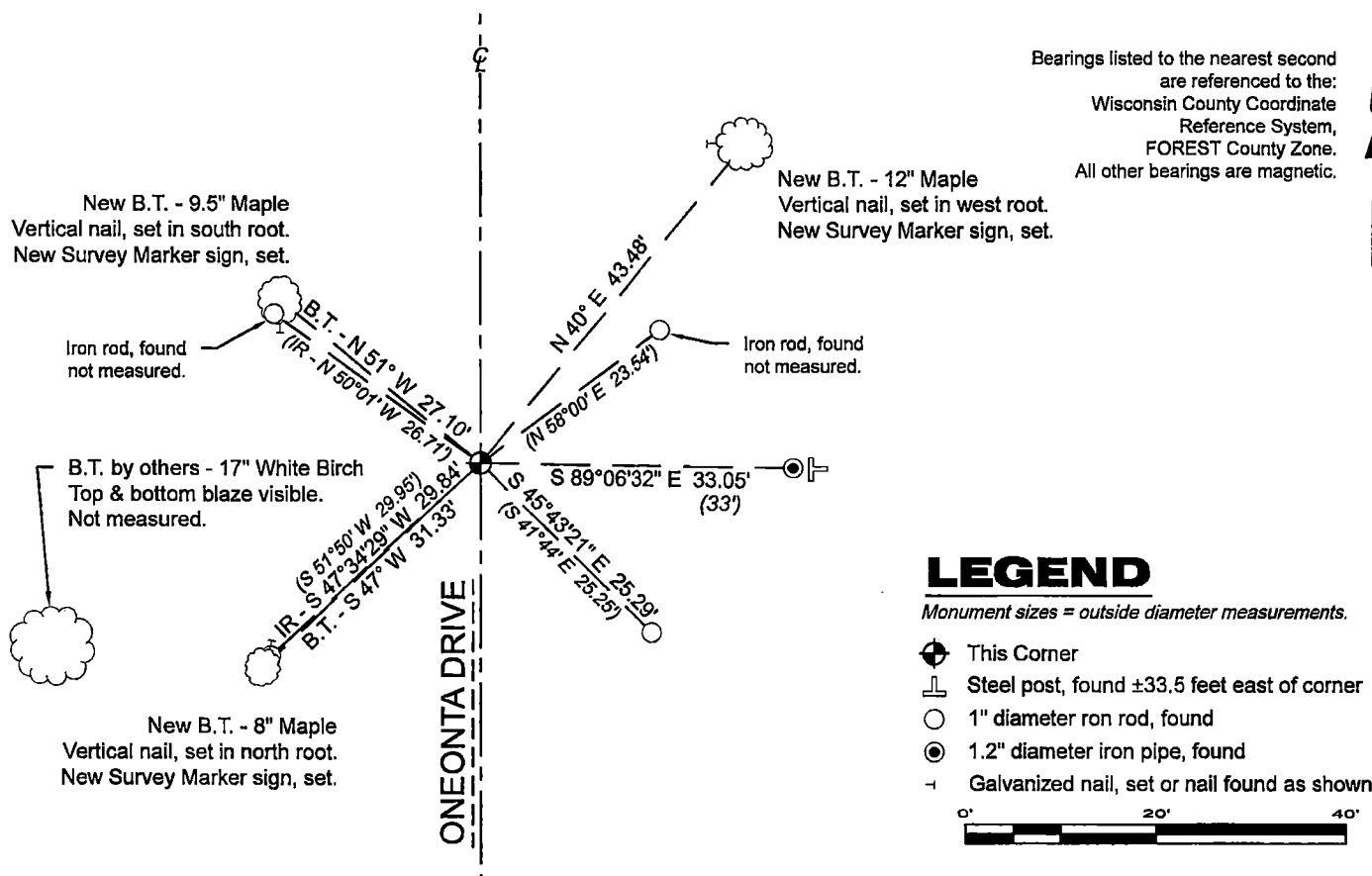
Original Surveyor: Artemas Curtis - September 1857 to October 1857  
Sugar 9 - S 68° W, 22 Links, Sugar 12 - N 22° W, 55 Links, Sugar 12 - N 54° E, 16 Links, Sugar 12 - S 31° E, 23 Links

See previous U.S. Public Land Survey Monument Record - A-1 MARINETTE CO. - September 20, 2005 - Surveyor 1117  
Jerome A. Pillath - THENCE:

- September 10, 2007 - Surveyor 1394 - Norman A. Harrison - indicates this position as "existing iron pipe" on Forest Co. record Map #371601-20081010A.
- October 19, 2011 - Surveyor 1394 - Norman A. Harrison - indicates this position as "existing 1" iron pipe" on Forest Co. record Map #371601-20120208.

February 27, 2024 - In performing the 2024 - Forest County - "PLSS Corner Remonumentation and GPS Services" project, I found a a nail with a 0.4" head near the centerline of Oneonta Drive. The monument is flush with the road grade. I also found: 4 - 1" diameter iron rods, 1 bearing tree by others, a 1.2" diameter iron pipe and a steel fence post with a Marinette Co. survey marker sign. I established 3 new reference monuments as shown below.

A-E 7.08(3)(c)(d) Plan view of corner with references to at least 4 witness monuments.



A-E 7.08(3)(e) 1857 Surveyor set a post, 2005 Surveyor found a 5/8" diameter iron rod, 2007 & 2011 Surveyor found a iron pipe. In 2024, I found a nail with a 0.4" diameter head.

A-E 7.08(3)(f) I accept this monument in good faith as a FOUND PERPETUATED LOCATION of the corner.

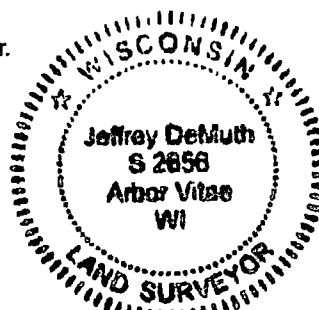
A-E 7.08(3)(g)(h) This corner was not determined through lost-corner-proportionate methods.

A-E 7.08(3)(i) I, Jeffrey L. DeMuth, Professional Land Surveyor No. S-2656, hereby certify that the corner location on this record was determined by me or under my direction and control, and that this U.S. Public Land Survey Monument Record is correct and complete to the best of my knowledge, and belief.

SIGNATURE

April 17, 2024

DATE



43816360000

43816360000

A25