

FILED ON:
01/28/2025 02:33 PM
CORTNEY BRITTEN CLEEREMAN
REGISTER OF DEEDS
FOREST COUNTY WI
PAGES: 1
INDEX#:

FOREST COUNTY SURVEY MONUMENT RECORD

NOTE: This form is intended and designed to fulfill all requirements of Wisconsin Administrative Code, Chapter A-E 7.08 U.S. Public Land Survey Monument Record (3) (a-1)

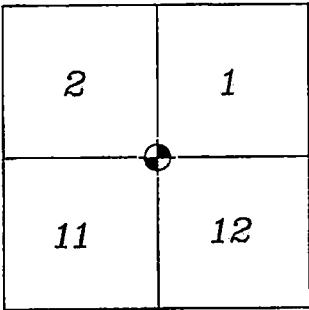
SECTION CORNER COMMON
TO SECTIONS 1, 2, 11, 12
TOWNSHIP: 39N
RANGE: 13E
TOWN OF ARGONNE

TYPE OF MONUMENT: COPPERWELD MONUMENT WITH CAP

WISCONSIN FOREST COUNTY
NORTHING: 683718.51'
EASTING: 857069.61'
DATUM: NAD83 (2011)
METHOD NETWORK RTK

FIELD WORK DATE: 10/16/2024
COMPANY: PAYNE AND DOLAN

FOUND: ☒
SET: ☐
RESET: ☐
RETIED: ☒



CORNER LOCATION
INDICATED BY:



BASIS FOR MONUMENT LOCATION:
(DESCRIBE METHOD OF SURVEY AND CORNER AUTHENTICATION)

HISTORY:
In 1865, William E. Daugherty and Alex McDill set section corner post.

In 1978, Gary L. Kratz and Michael J. Avery conducted a dependent resurvey and set a Copperweld at centerline of STH 55 flush with the surface of the road.

In 1990, Gary L. Pisoni, using 1978 bearing trees, found PK nail in the surface of STH 55 and Copperweld monument buried below road.

FOUND PK NAIL AT CORNER LOCATION AND 3 OF THE 4 TIES. REFERENCED TIE SHEET FROM S-1634 DATED 12-15-92. SET ONE TIE TO REPLACE MISSING TIE.

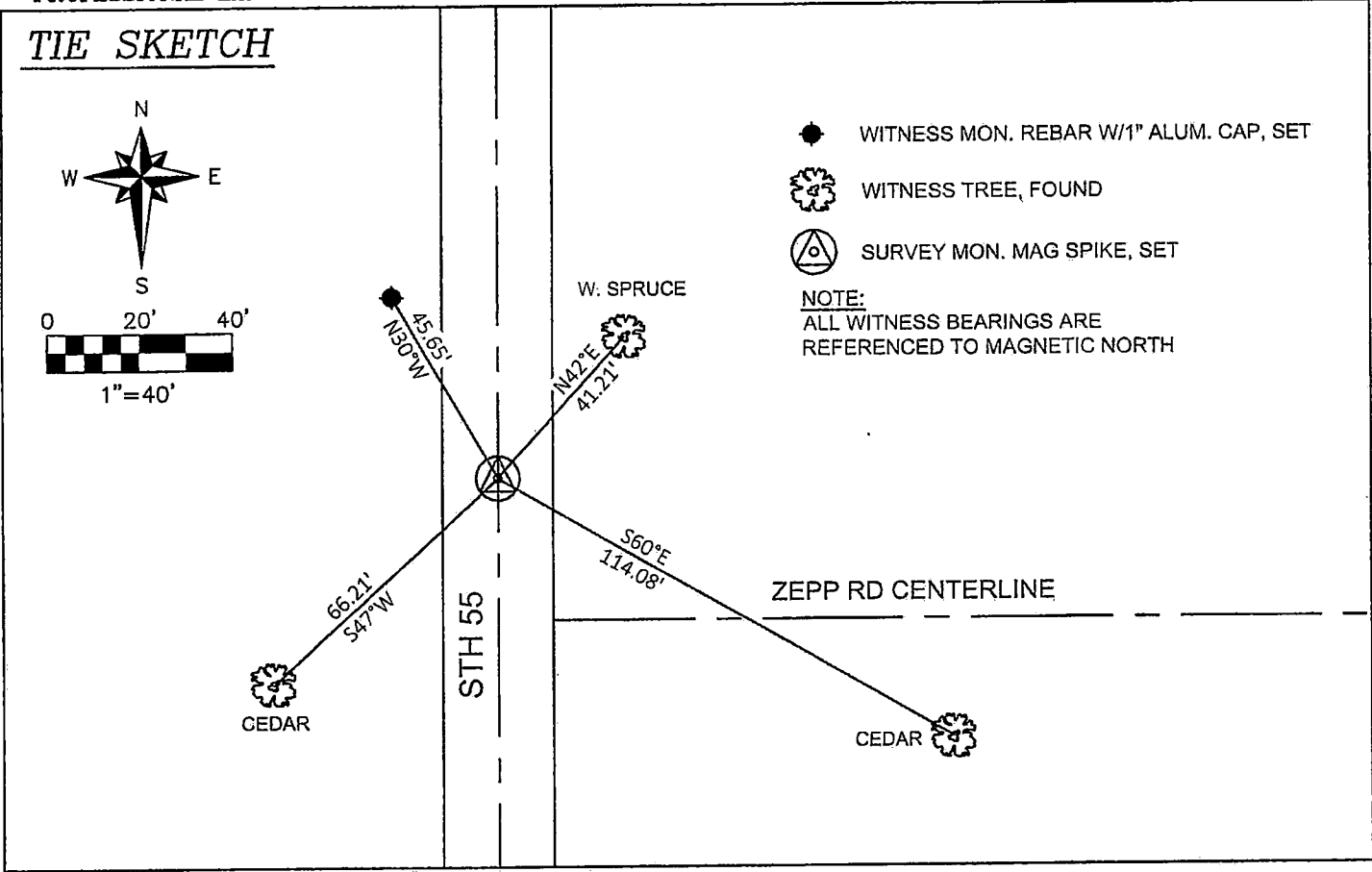
STH 55, REPAVED FALL 2024.
COPPERWELD REMAINS IN PLACE.
SET MAG SPIKE AT GRADE ON NEWLY PAVED ROAD DIRECTLY ABOVE THE COPPERWELD, DERIVED FROM RTK COORDINATES.

I accept this monument in good faith as a FOUND PERPETUATED LOCATION of the corner and was not determined through lost-corner-proportionate methods.

I, Rebecca A. DesRochers, Professional Land Surveyor No. 3170, hereby certify that the corner location on this record was determined by me or under my direction and control, and that this U.S. Public Land Survey Monument Record is correct and complete to best of my knowledge, and belief.

Rebecca A. DesRochers 01/21/2025
PROFESSIONAL LAND SURVEYOR DATED

TIE SKETCH



43913020000

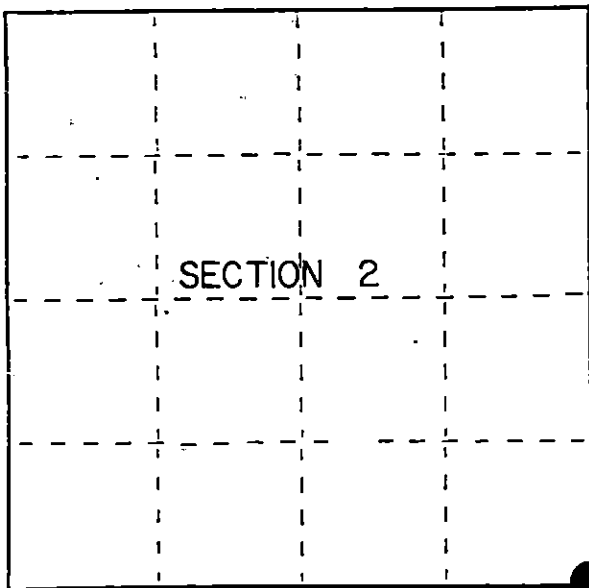
U.S. PUBLIC LAND SURVEY MONUMENT RECORD

Index No. E-21

State of Wisconsin }
County of Forest } ss.

I Gary L. Pisoni, do hereby certify that on the 8th day of July, 1990, I found evidence of the Southeast Section corner of Section 2 Township 39, North, Range 13 East, Fourth Principal Meridian, as described hereon; and that from this evidence I established a new monument and accessories as described hereon to perpetuate the original location of this corner.

Resident witnesses:



● = Corner monument restored.

History of original corner establishment:

Original Government Survey in 1865 by William E. Daugherty and Alex McDill.

Dependent Resurvey in 1978 by Gary L. Kratz and Michael J. Avery. Corner position is determined at the intersection of State Hwy 55 and Zepp Road, extending East. Corner is locally accepted and harmoniously related to existing original corners. At the corner point, set a Copperweld, flush with the road surface, with cap mkd; T39N, R13E, S2, S1, S11, S12, 1978. From which the following bear;

White Spruce	10"	N46°E	62 lks.	Cedar	10"	S54°W	101 lks.
Cedar	10"	S61°E	173 lks.	Maple	5"	N73°W	55 lks.

Description of corner evidence found:

Found P.K. nail in blacktop above monument.

Found monument buried below road, from which the following bear;

White Spruce	11"	N42°E	41.21 feet
Cedar	11"	S60°E	114.08 feet
Cedar	10"	S47°W	66.21 feet
Red Maple	5"	N73°W	36.54 feet

Description of monument and accessories I established to perpetuate the original location of this corner.
None

Dated at Iron River, MI, ~~was~~ this 20th day of August, 1990

Signature Gary L. Pisoni Title Land Surveyor Registration No. S-1634
(County Surveyor, Registered Land Surveyor, or other duly authorized official)

Office of Register of Deeds, County of Forest, I hereby certify that the within instrument was filed in this office for record on the 10th day of March, 1993 at 12:45 o'clock P. M.

Paul Aschbrenner
(Register of Deeds)

By _____ Deputy

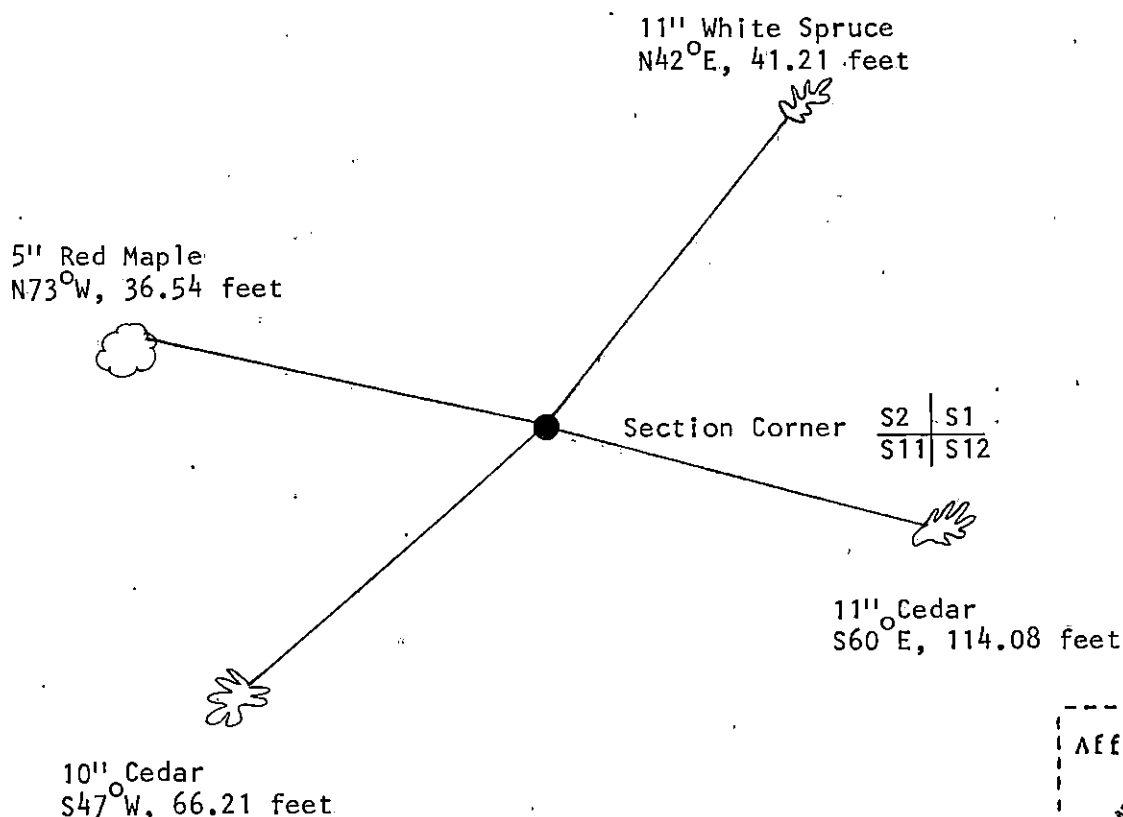
(e) Describe any material discrepancy between the location of the corner as restored or reestablished and the location of that corner as previously restored or reestablished by distance and direction. Show the discrepancy on the plan view drawing under (d), above. Show the distances between the corner as previously restored or reestablished and (1) the corner as restored or reestablished, and (2) to at least 2 of the witness monuments shown on the drawing in (d), above.

See drawing below.

(f) Was the corner restored through acceptance of (1) an obliterated evidence location, or, (2) a found perpetuated location?

Restored through acceptance of a found perpetuated location.

(g&h) Was the corner reestablished through lost corner proportionate methods? If so, show the method, including the directions and distances to other public land survey corners used as evidence or used for proportioning in determining the corner location?



(i) I, Gary L. Pisoni
(type or print name) certify that the corner location shown
on this record was determined by me or under my direction and
control and that this U.S. Public Land Survey Monument Record is
correct and complete to the best of my knowledge and belief.

Signature

Date

Survey requested by;

District Ranger

Date