

FILED ON:  
01/28/2025 02:33 PM  
CORTNEY BRITTEN CLEEREMAN  
REGISTER OF DEEDS  
FOREST COUNTY WI  
PAGES: 1  
INDEX#:

FOREST COUNTY SURVEY MONUMENT RECORD

NOTE: This form is intended and designed to fulfill all requirements of Wisconsin Administrative Code, Chapter A-E 7.08 U.S. Public Land Survey Monument Record (3) (a-1)

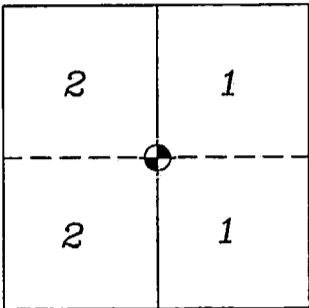
TYPE OF MONUMENT: COPPERWELD MONUMENT WITH CAP

WISCONSIN FOREST COUNTY  
NORTHING: 686478.22'  
EASTING: 857219.22'  
DATUM: NAD83 (2011)  
METHOD NETWORK RTK

FIELD WORK DATE: 10/16/2024  
COMPANY: PAYNE AND DOLAN

SECTION CORNER COMMON  
TO SECTIONS 1, 2  
TOWNSHIP: 39N  
RANGE: 13E  
TOWN OF ARGONNE

FOUND: ☒  
SET: ☐  
RESET: ☐  
RETIED: ☐



CORNER LOCATION  
INDICATED BY:



BASIS FOR MONUMENT LOCATION:  
(DESCRIBE METHOD OF SURVEY AND CORNER AUTHENTICATION)

HISTORY:  
In 1978, Gary L. Kratz and Michael J. Avery conducted a dependent resurvey and set a Copperweld 2" below the surface of the road.

In 1990, Gary L. Pisoni, using 1978 bearing trees, found Copperweld monument and set PK Nail above the monument.

FOUND PK NAIL AT CORNER LOCATION AND 4 OF THE 4 TIES. REFERENCED TIE SHEET FROM S-1634 DATED 12-15-92.

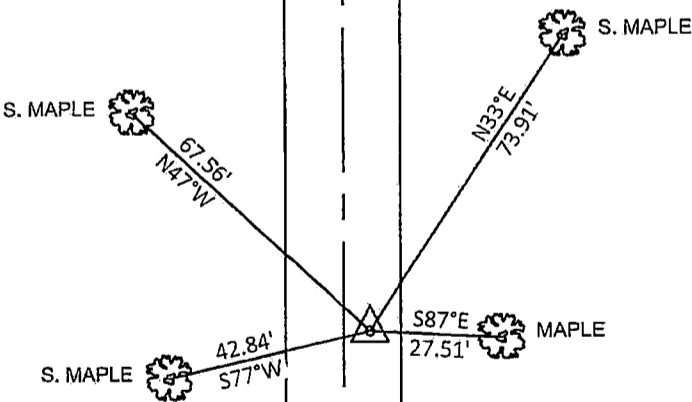
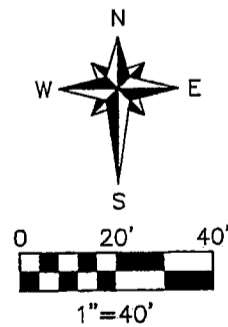
STH 55, REPAVED FALL 2024.  
COPPERWELD REMAINS IN PLACE.  
SET MAG NAIL AT GRADE ON NEWLY PAVED ROAD DIRECTLY ABOVE THE COPPERWELD, DERIVED FROM RTK COORDINATES.

I accept this monument in good faith as a FOUND PERPETUATED LOCATION of the corner and was not determined through lost-corner-proportionate methods.

I, Rebecca A. DesRochers, Professional Land Surveyor No. 3170, hereby certify that the corner location on this record was determined by me or under my direction and control, and that this U.S. Public Land Survey Monument Record is correct and complete to best of my knowledge, and belief.

Rebecca A. DesRochers 01/21/2025  
PROFESSIONAL LAND SURVEYOR DATED

TIE SKETCH



WITNESS TREE, FOUND  
 SURVEY MON. MAG NAIL, SET

NOTE:  
ALL WITNESS BEARINGS ARE  
REFERENCED TO MAGNETIC NORTH

# U.S. PUBLIC LAND SURVEY MONUMENT RECORD

Index No. C-21

State of Wisconsin }  
County of Forest } ss.

I, Gary L. Pisoni, do hereby  
certify that on the 19th day  
of June, 1990, I found  
evidence of the East Quarter  
corner of Section 2  
Township 39, North, Range  
13 East, Fourth Principal Meridian,  
as described hereon; and that from this evidence  
I established a new monument and accessories  
as described hereon to perpetuate the original  
location of this corner.

Resident witnesses:

## History of original corner establishment:

Dependent Resurvey in 1978 by Michael J. Avery and Gary L. Kratz. N02°58'E,  
between Sections 1 and 2, at 41.86 chains, proportionate distance, set a  
copperweld, 2 inches below the surface of the road, with cap mkd; T39N, R13E,  
1/4, S1, S2, 1978. From which the following bear;

Maple	10"	S87°E	42 lks.
Elm	11"	S81°W	58 lks.

## Description of corner evidence found:

Found monument as described, monument located below blacktop surface and set  
P.K. nail above monument.

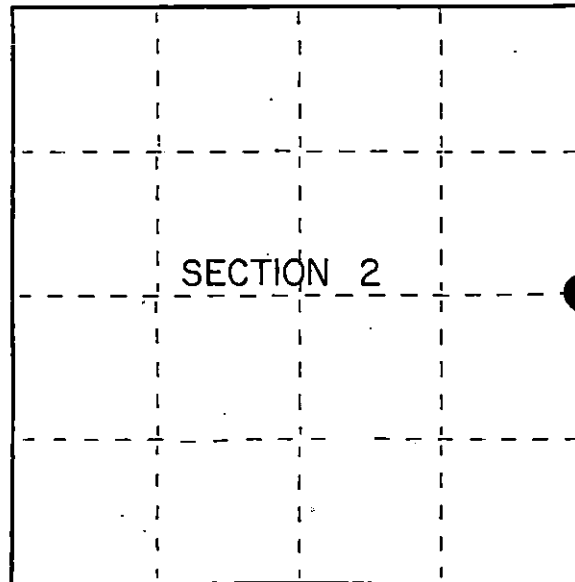
From which the following bear;

S. Maple	13"	N 87°E	27.51 feet
----------	-----	--------	------------

## Description of monument and accessories I established to perpetuate the original location of this corner.

Blazed and scribed the following new bearing trees; (Measurements taken to nail  
in side of tree).

Sugar Maple	9"	N 33°E	73.91 feet
Sugar Maple	8"	S 77°W	42.84 feet
Sugar Maple	9"	N 47°W	67.56 feet



● = Corner monument restored.

Dated at Iron River, MI, ~~xxxx~~ this 13th day of December, 1990

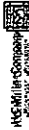
Signature Gary L. Pisoni Title Land Surveyor Registration No. S-1634  
(County Surveyor, Registered Land Surveyor, or other duly authorized official)

Office of Register of Deeds, County of Forest, I hereby certify that the within  
instrument was filed in this office for record on the 10th day of March, 1993  
at 10:45 o'clock A. M.

Paul Aschenbrenner  
(Register of Deeds)

By \_\_\_\_\_ Deputy

FORM NO. 985-A



Stock No. 26273

146904

43913022000

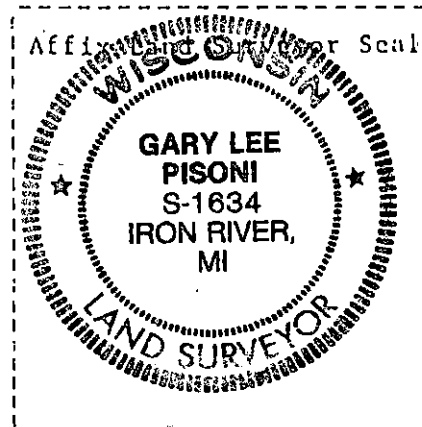
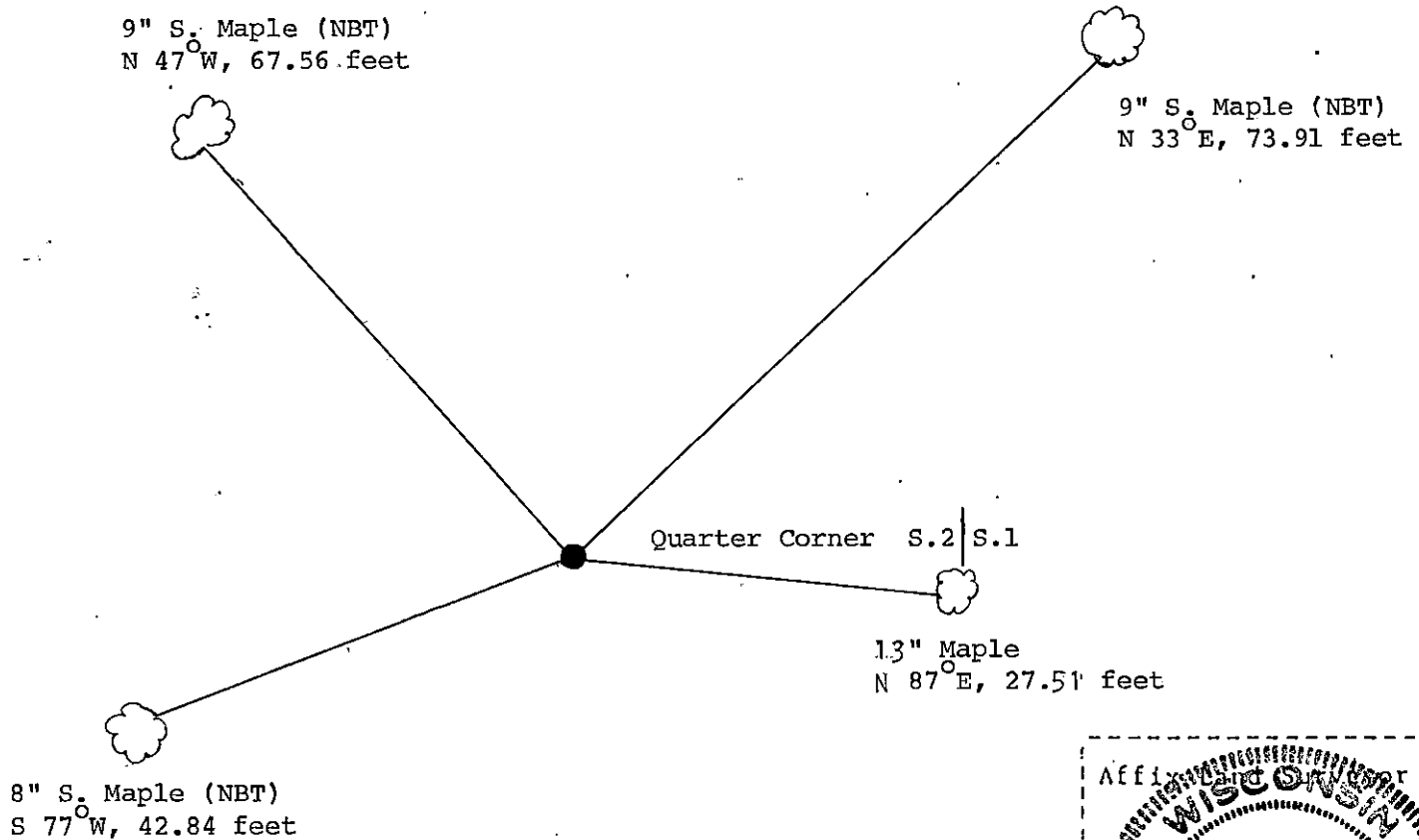
e) Describe any material discrepancy between the location of the corner as restored or reestablished and the location of that corner as previously restored or reestablished by distance and direction. Show the discrepancy on the plan view drawing under (d), above. Show the distances between the corner as previously restored or reestablished and (1) the corner as restored or reestablished, and (2) to at least 2 of the witness monuments shown on the drawing in (d), above.

See drawing below.

(f) Was the corner restored through acceptance of (1) an obliterated evidence location, or, (2) a found perpetuated location?

Restored through acceptance of a found perpetuated location.

(g&h) Was the corner reestablished through lost corner proportionate methods? If so, show the method, including the directions and distances to other public land survey corners used as evidence or used for proportioning in determining the corner location?



(i) I, Gary L. Pisoni  
(type or print name) certify that the corner location shown on this record was determined by me or under my direction and control and that this U.S. Public Land Survey Monument Record is correct and complete to the best of my knowledge and belief.

Signature

Date

Survey requested by;

Cambridge  
District Ranger

Date