

FILED ON:
01/28/2025 02:33 PM
CORTNEY BRITTEN CLEEREMAN
REGISTER OF DEEDS
FOREST COUNTY WI
PAGES: 1
INDEX#:

FOREST COUNTY SURVEY MONUMENT RECORD

NOTE: This form is intended and designed to fulfill all requirements of Wisconsin Administrative Code, Chapter A-E 7.08 U.S. Public Land Survey Monument Record (3) (a-1)

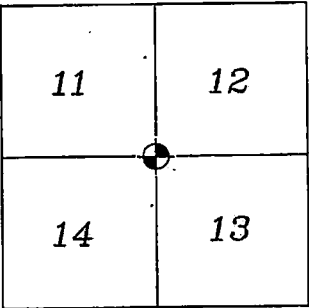
SECTION CORNER COMMON
TO SECTIONS 11, 12, 13,
14
TOWNSHIP: 39N
RANGE: 13E
TOWN OF ARGONNE

TYPE OF MONUMENT: RR SPIKE

WISCRS FOREST COUNTY
NORTHING: 678133.05'
EASTING: 856637.86'
DATUM: NAD83 (2011)
METHOD NETWORK RTK

FIELD WORK DATE: 10/16/2024
COMPANY: PAYNE AND DOLAN

FOUND: ☒
SET: ☐
RESET: ☐
RETIED: ☒



CORNER LOCATION
INDICATED BY:

BASIS FOR MONUMENT LOCATION:
(DESCRIBE METHOD OF SURVEY AND CORNER AUTHENTICATION)

HISTORY:
In 1865, William E. Daugherty and Alex McDill set section corner post.

In 1978, Gary L. Kratz and Michael J. Avery conducted a dependent resurvey and set a Copperweld at the intersection of STH 55 and Hartline Rd (extending east) flush with the surface of the road.

In 1990, Gary L. Pisoni, using 1978 bearing trees, re-establish corner and set Railroad Spike flush with the road surface on STH 55.

FOUND RR SPIKE AT CORNER LOCATION AND 3 OF THE 4 TIES. REFERENCED TIE SHEET FROM S-1634 DATED 12-15-92. SET ONE TIE TO REPLACE MISSING TIE.

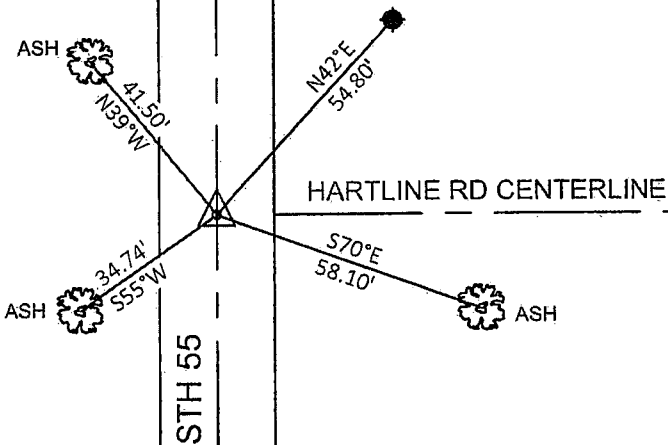
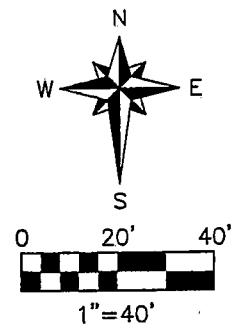
STH 55, REPAVED FALL 2024.
RR SPIKE REMAINS IN PLACE.
SET MAG NAIL AT GRADE ON NEWLY PAVED ROAD DIRECTLY ABOVE THE RR SPIKE, DERIVED FROM RTK COORDINATES.

I accept this monument in good faith as a FOUND PERPETUATED LOCATION of the corner and was not determined through lost-corner-proportionate methods.

I, Rebecca A. DesRochers, Professional Land Surveyor No. 3170, hereby certify that the corner location on this record was determined by me or under my direction and control, and that this U.S. Public Land Survey Monument Record is correct and complete to best of my knowledge, and belief.

Rebecca A. DesRochers 01/21/2025
PROFESSIONAL LAND SURVEYOR DATED

TIE SKETCH



- WITNESS MON. REBAR W/1" ALUM. CAP, SET
- WITNESS TREE, FOUND
- SURVEY MON. MAG NAIL, SET

NOTE:
ALL WITNESS BEARINGS ARE
REFERENCED TO MAGNETIC NORTH

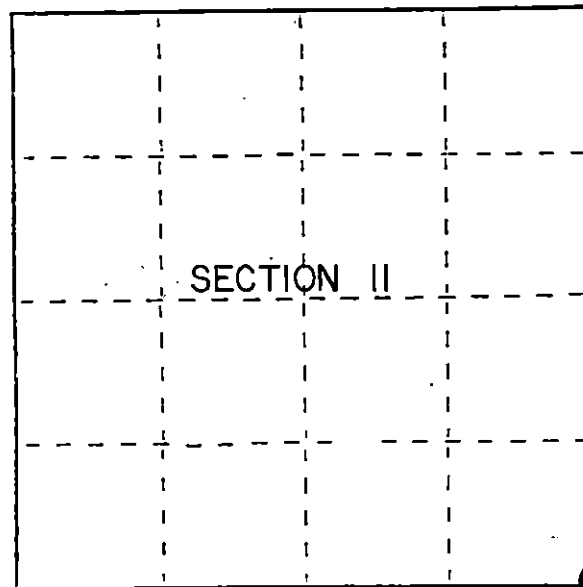
U.S. PUBLIC LAND SURVEY MONUMENT RECORD

Index No. J-21

State of Wisconsin }
County of Forest } ss.

I, Gary L. Pisoni, do hereby certify that on the 8th day of July, 1990, I found evidence of the Southeast Section corner of Section 11 Township 39 North, Range 13 East, Fourth Principal Meridian, as described hereon; and that from this evidence I established a new monument and accessories as described hereon to perpetuate the original location of this corner.

Resident witnesses:



= Corner monument restored.

History of original corner establishment:

Original Government Survey in 1865 by William E. Daugherty and Alex McDill.

Dependent Resurvey in 1978 by Gary L. Kratz and Michael J. Avery. Corner position determined at the intersection of State Hwy 55 and Hartline Road extending East. Position is locally accepted and harmoniously related to existing original corners. At the corner point, set a Copperweld, flush with the surface of the road, with a cap mkd; T39N, R13E, S11, S12, S13, S14, 1978. From which the following bear;

| | | | | | | | |
|-----|----|-------|---------|-----|----|-------|---------|
| Ash | 6" | N41°E | 82 lks. | Ash | 6" | S54°W | 52 lks. |
| Ash | 6" | S72°E | 88 lks. | Ash | 7" | N57°W | 62 lks. |

Description of corner evidence found:

Found monument missing.

Set Railroad Spike in center-line of State Hwy #55, from the following 1978 bearing trees;

| | | | |
|-----|----|-------|------------|
| Ash | 6" | N41°E | 54.11 feet |
| Ash | 6" | S70°E | 58.11 feet |
| Ash | 7" | S55°W | 34.74 feet |
| Ash | 7" | N39°W | 41.50 feet |

Description of monument and accessories I established to perpetuate the original location of this corner.

None

Dated at Iron River, MI, ~~Wisc~~ this 20th day of August, 1990

Signature Gary L. Pisoni Title Land Surveyor Registration No. S-1634
(County Surveyor, Registered Land Surveyor, or other duly authorized official)

Office of Register of Deeds, County of Forest, I hereby certify that the within instrument was filed in this office for record on the 04 day of March, 1993 at 10:45 o'clock A M.

Paul A. Schenkman
(Register of Deeds)

By _____ Deputy

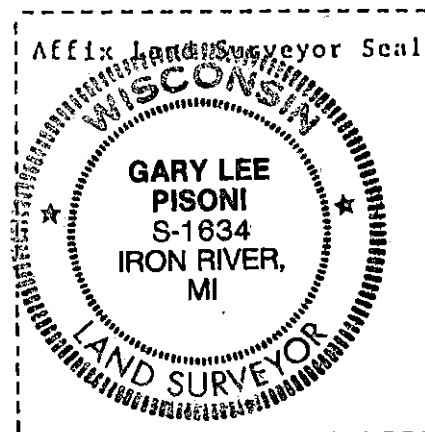
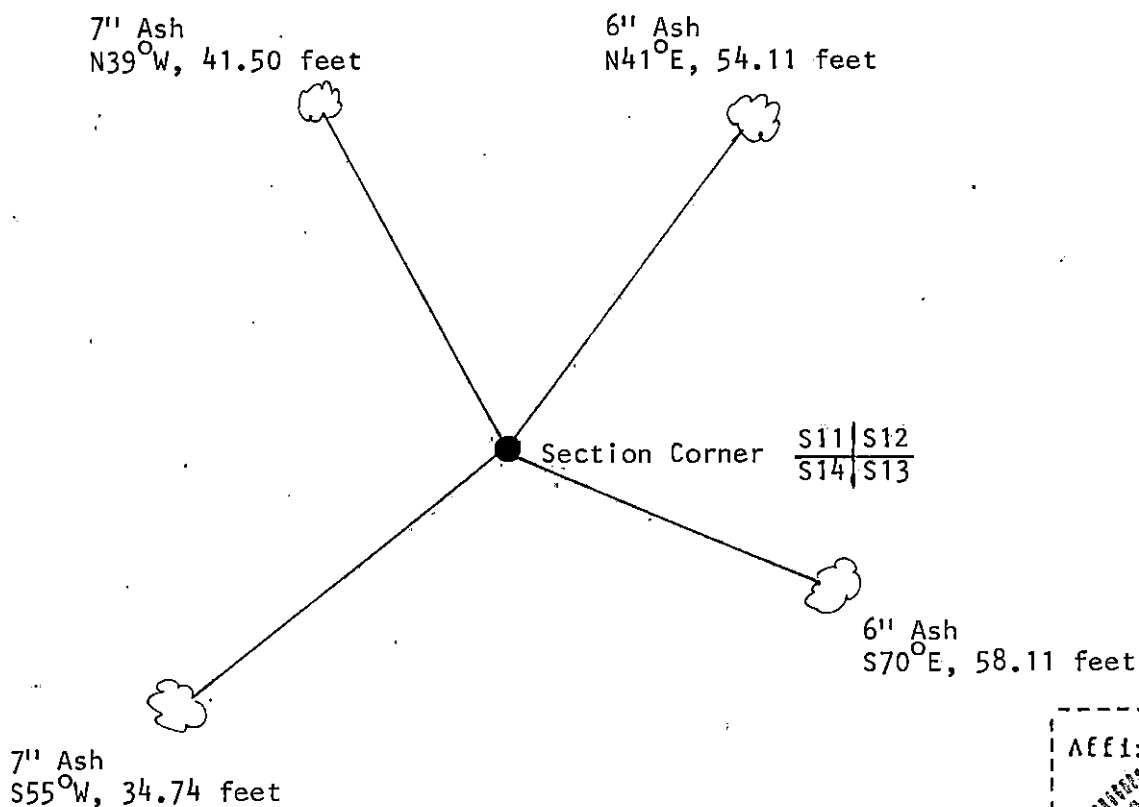
(e) Describe any material discrepancy between the location of the corner as restored or reestablished and the location of that corner as previously restored or reestablished by distance and direction. Show the discrepancy on the plan view drawing under (d), above. Show the distances between the corner as previously restored or reestablished and (1) the corner as restored or reestablished, and (2) to at least 2 of the witness monuments shown on the drawing in (d), above.

See drawing below.

(f) Was the corner restored through acceptance of (1) an obliterated evidence location, or, (2) a found perpetuated location?

Restored through acceptance of a found perpetuated location.

(g&h) Was the corner reestablished through lost corner proportionate methods? If so, show the method, including the directions and distances to other public land survey corners used as evidence or used for proportioning in determining the corner location?



(i) I, Gary L. Pisoni
(type or print name) certify that the corner location shown
on this record was determined by me or under my direction and
control and that this U.S. Public Land Survey Monument Record is
correct and complete to the best of my knowledge and belief.

Signature

Gary L. Pisoni

Date

11/21/91

Survey requested by;

Pam Barbi

District Ranger

Date

12/15/92