

FILED ON:
01/28/2025 02:33 PM
CORTNEY BRITTEN CLEEREMAN
REGISTER OF DEEDS
FOREST COUNTY WI
PAGES: 1
INDEX#:

FOREST COUNTY SURVEY MONUMENT RECORD

NOTE: This form is intended and designed to fulfill all requirements of Wisconsin Administrative Code, Chapter A-E 7.08 U.S. Public Land Survey Monument Record (3) (a-1)

SECTION CORNER COMMON
TO SECTIONS 11, 12
TOWNSHIP: 39N
RANGE: 13E
TOWN OF ARGONNE

TYPE OF MONUMENT: COPPERWELD MONUMENT WITH CAP

WISCRS FOREST COUNTY
NORTHING: 680925.78'
EASTING: 856853.50'
DATUM: NAD83 (2011)
METHOD NETWORK RTK

FIELD WORK DATE: 10/16/2024
COMPANY: PAYNE AND DOLAN

BASIS FOR MONUMENT LOCATION:
(DESCRIBE METHOD OF SURVEY AND CORNER AUTHENTICATION)

HISTORY:
In 1865, William E. Daugherty and Alex McDill set section corner post.

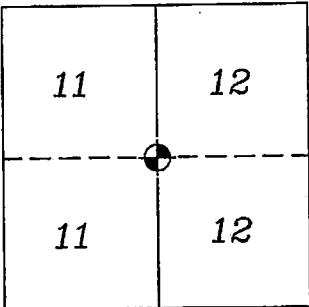
In 1978, Gary L. Kratz and Michael J. Avery conducted a dependent resurvey and set a Copperweld at centerline of STH 55 flush with the surface of the road.

In 1990, Gary L. Pisoni, using 1978 bearing trees, re-establish corner and set PK Nail flush with the road surface on STH 55.

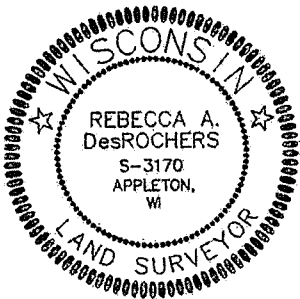
FOUND PK NAIL AT CORNER LOCATION AND 4 OF THE 4 TIES. REFERENCED TIE SHEET FROM S-1634 DATED 12-15-92.

STH 55, REPAVED FALL 2024.
COPPERWELD IN PLACE.
SET MAG SPIKE AT GRADE ON NEWLY PAVED ROAD DIRECTLY ABOVE THE COPPERWELD, DERIVED FROM RTK COORDINATES.

FOUND: ☒
SET: ☐
RESET: ☐
RETIED: ☐



CORNER LOCATION
INDICATED BY:

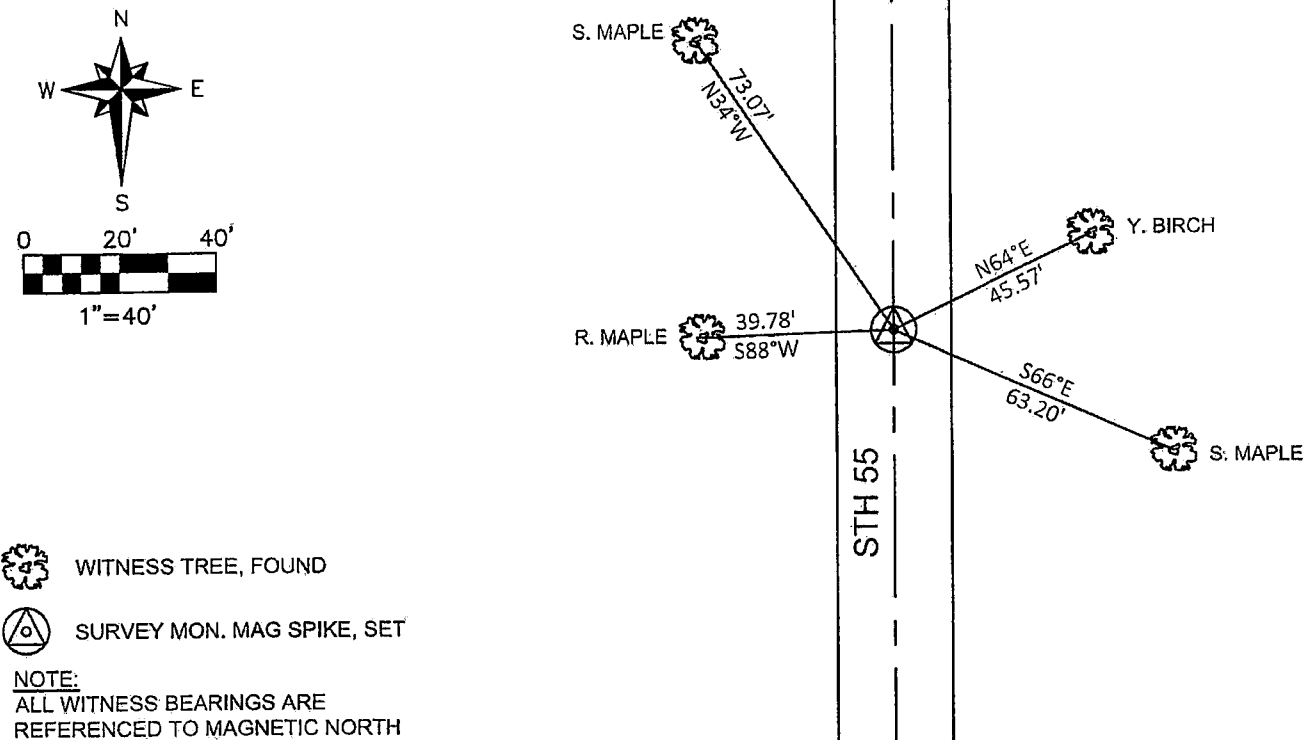


I accept this monument in good faith as a FOUND PERPETUATED LOCATION of the corner and was not determined through lost-corner-proportionate methods.

I, Rebecca A. DesRochers, Professional Land Surveyor No. 3170, hereby certify that the corner location on this record was determined by me or under my direction and control, and that this U.S. Public Land Survey Monument Record is correct and complete to best of my knowledge, and belief.

Rebecca A. DesRochers 01/21/2025
PROFESSIONAL LAND SURVEYOR DATED

TIE SKETCH



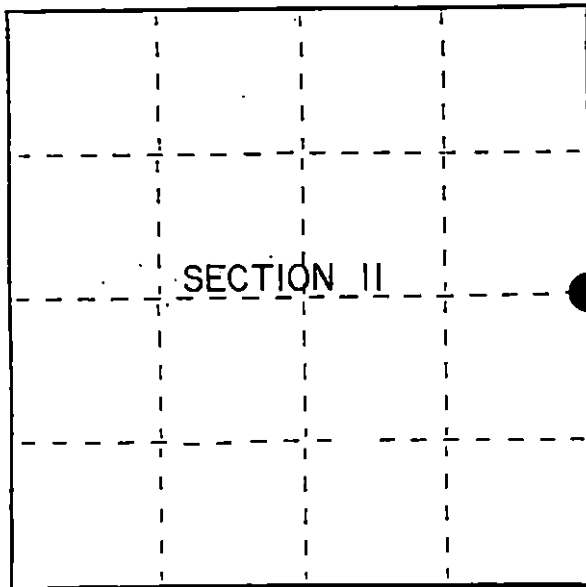
U.S. PUBLIC LAND SURVEY MONUMENT RECORD

Index No. G-21

State of Wisconsin }
County of Forest } ss.

I, Gary L. Pisoni, do hereby certify that on the 8th day of July, 1990, I found evidence of the East Quarter corner of Section 11 Township 39, North, Range 13 East, Fourth Principal Meridian, as described hereon; and that from this evidence I established a new monument and accessories as described hereon to perpetuate the original location of this corner.

Resident witnesses:



● = Corner monument restored.

History of original corner establishment:

Original Government Survey in 1865 by William E. Daugherty and Alex McDill.

Dependent Resurvey in 1978 by Gary L. Kratz and Michael J. Avery. N4 19°E, 42.45 chs., between Sections 11 and 12, at proportionate distance, set a Copperweld, flush with the surface of the road, with cap mkd; T39N, R13E, 1/4, S11, S12, 1978. From which the following bear;

Birch	12"	N72°E	69 links
Maple	8"	West	60 links

Corner falls in the center line of State Hwy 55.

Description of corner evidence found:

Set P.K. nail above monument in blacktop.

Found monument buried below road, from which the following bear;

Yellow Birch	14"	N64°E	45.57 feet
Red Maple	8"	S88°W	39.78 feet

Description of monument and accessories I established to perpetuate the original location of this corner.

Blazed and scribed the following new bearing trees; (all measurements taken to a nail in the side of tree)

Sugar Maple	8"	S66°E	63.20 feet
Sugar Maple	12"	N34°W	73.07 feet

Dated at Iron River, MI this 20th day of August, 1990

Signature Gary L. Pisoni Title Land Surveyor Registration No. 1634
(County Surveyor, Registered Land Surveyor, or other duly authorized official)

Office of Register of Deeds, County of Forest, I hereby certify that the within instrument was filed in this office for record on the 10th day of March, 1993 at 10:45 o'clock A. M.

Paul Aschenbrenner
(Register of Deeds)

By _____ Deputy

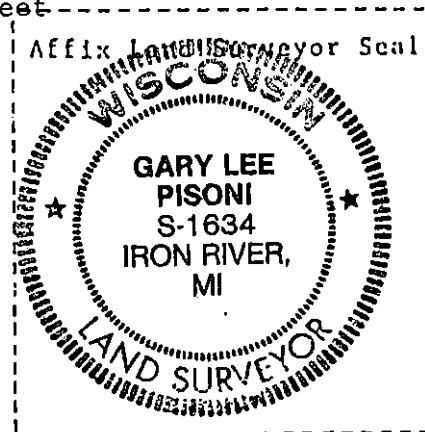
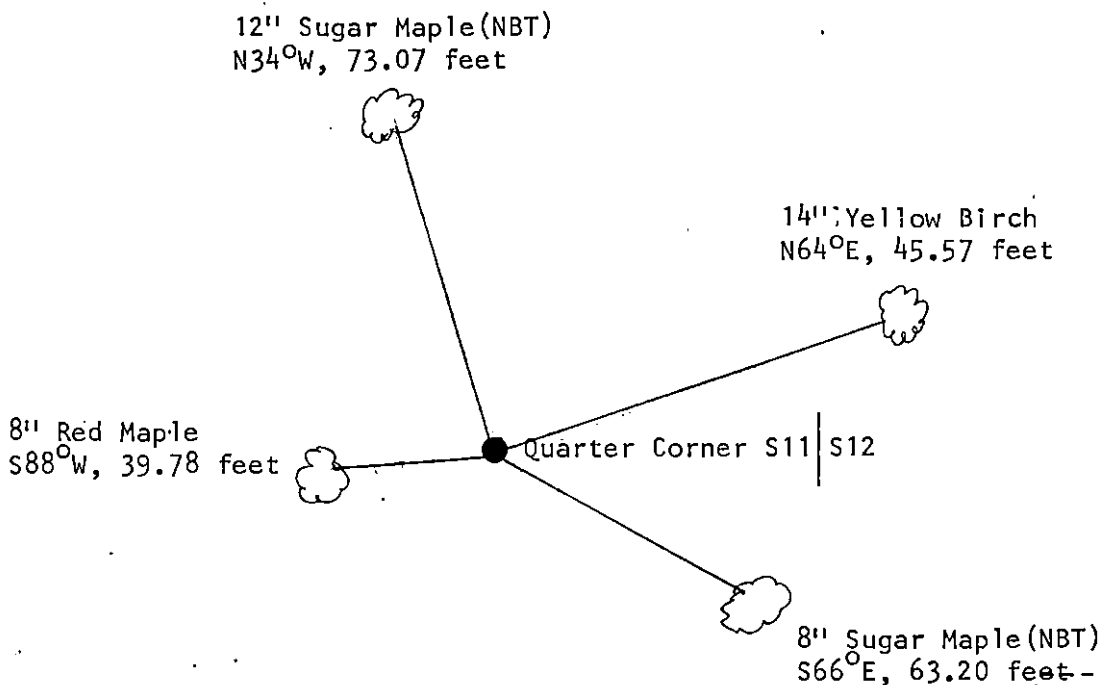
(e) Describe any material discrepancy between the location of the corner as restored or reestablished and the location of that corner as previously restored or reestablished by distance and direction. Show the discrepancy on the plan view drawing under (d), above. Show the distances between the corner as previously restored or reestablished and (1) the corner as restored or reestablished, and (2) to at least 2 of the witness monuments shown on the drawing in (d), above.

See drawing below.

(f) Was the corner restored through acceptance of (1) an obliterated evidence location, or, (2) a found perpetuated location?

Restored through acceptance of a found perpetuated location.

(g) Was the corner reestablished through lost corner proportionate methods? If so, show the method, including the directions and distances to other public land survey corners used as evidence or used for proportioning in determining the corner location?



(i) I, Gary L. Pisoni
(type or print name) certify that the corner location shown on this record was determined by me or under my direction and control and that this U.S. Public Land Survey Monument Record is correct and complete to the best of my knowledge and belief.

Signature

Gary L. Pisoni

Date

11/21/91

Survey requested by:

Pam Goren
District Ranger

Date

12/14/92