

FILED ON:
01/28/2025 02:33 PM
CORTNEY BRITTEN CLEEREMAN
REGISTER OF DEEDS
FOREST COUNTY WI
PAGES: 1
INDEX#:

FOREST COUNTY SURVEY MONUMENT RECORD

NOTE: This form is intended and designed to fulfill all requirements of Wisconsin Administrative Code, Chapter A-E 7.08 U.S. Public Land Survey Monument Record (3) (a-1)

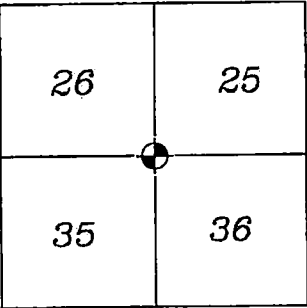
SECTION CORNER COMMON
TO SECTIONS 25, 26, 35,
36
TOWNSHIP: 39N
RANGE: 13E
TOWN OF ARGONNE

TYPE OF MONUMENT: RR SPIKE

WISCONSIN FOREST COUNTY
NORTHING: 663151.35'
EASTING: 856975.53'
DATUM: NAD83 (2011)
METHOD NETWORK RTK

FIELD WORK DATE: 10/16/2024
COMPANY: PAYNE AND DOLAN

FOUND: ☒
SET: ☐
RESET: ☐
RETIED: ☐



CORNER LOCATION
INDICATED BY:

BASIS FOR MONUMENT LOCATION:
(DESCRIBE METHOD OF SURVEY AND CORNER AUTHENTICATION)

HISTORY:
In 1865, William E. Daugherty set section corner post with the following
BTs: Birch, 10" N.48°W., 19 links; W. Pine 25", S.76°E., 18 links.

In 1992, William B. Cochrane re-establish corner position by
proportionate methods between the SW corner of section 36 and NW
corner of section 25. Set RR spike flush with road surface.

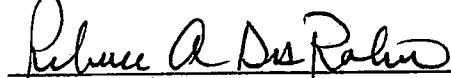
FOUND RR SPIKE AT CORNER LOCATION AND 6 OF THE 6 TIES. REFERENCED
TIE SHEET FROM S-1107 DATED 12-29-94.

STH 55, REPAVED FALL 2024.
RR SPIKE REMAINS IN PLACE.
SET MAG NAIL AT GRADE ON NEWLY PAVED ROAD DIRECTLY ABOVE THE RR
SPIKE, DERIVED FROM RTK COORDINATES.

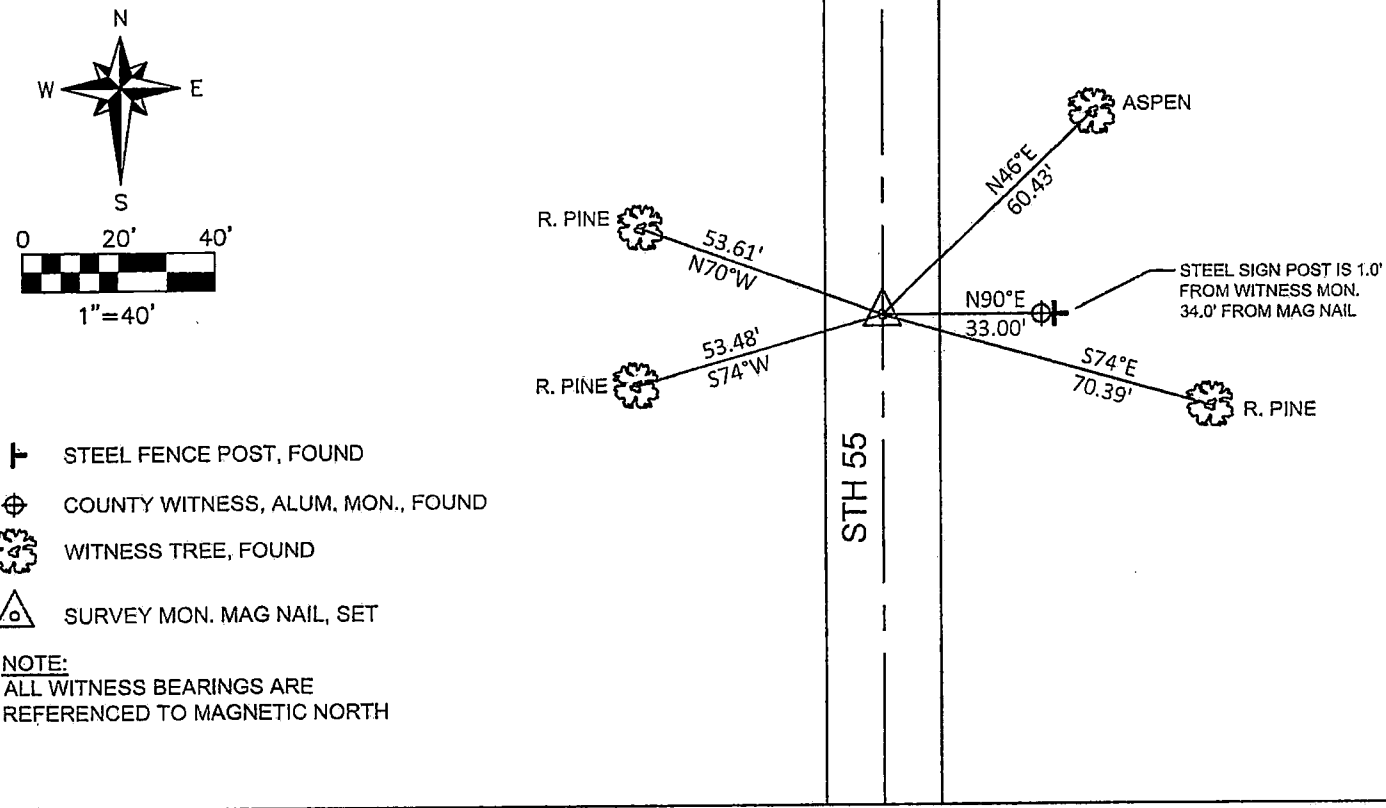


I accept this monument in good faith as a FOUND PERPETUATED LOCATION of the corner and was not
determined through lost-corner-proportionate methods.

I, Rebecca A. DesRochers, Professional Land Surveyor No. 3170, hereby certify that the corner location
on this record was determined by me or under my direction and control, and that this U.S. Public
Land Survey Monument Record is correct and complete to best of my knowledge, and belief.


PROFESSIONAL LAND SURVEYOR
01/21/2025
DATED

TIE SKETCH



Stock No. 26273

156590

State of Wisconsin }
County of Forest } ss.

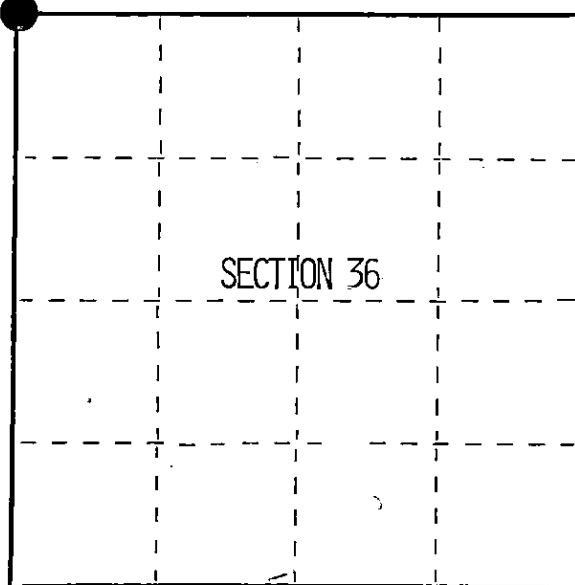
I William B. Cochrane, do hereby
certify that on the 5th day
of April, 1993, I found
evidence of the Northeast Section
corner of Section 36
Township 39, North, Range
13 East, Fourth Principal Meridian,
as described hereon; and that from this evidence
I established a new monument and accessories
as described hereon to perpetuate the original
location of this corner.

Resident witnesses:

.....

.....

.....



● = Corner monument restored.

CERTIFIED LAND CORNER RESTORATION

Index No. V-21

History of original corner establishment:
Original Government Survey by William E. Daugherty in 1865.
North between sections 35 and 36, at 80 chains set post. From which:

W. Pine	25"	S76°E	18 lks
Birch	10"	N48°W	19 lks

Description of corner evidence found:

Noncorner evidence was found.

Description of monument and accessories I established to perpetuate the original location of this corner.

At the proportionate distance and in the center-line of State highway 55 between the
Southwest section corner of section 36 and the Northwest section corner of section 25.
Set a railroad spike flush with road surface. From which the following bear:

Aspen	8"	N46°E	60.43 feet
R. Pine	9"	S74°E	70.39 feet
R. Pine	10"	S74°W	53.48 feet
R. Pine	10"	N70°W	53.61 feet

Aluminum pipe reference monument 2½"X36" 2½feet in the ground with an aluminum cap stamped:
T39N, R13E, S25, S26, S35, S36, 1993, 33.00ft. S-1107.

Dated at Hiles, Wis., this 29th day of December, 1994

Signature William B. Cochrane Title Land Surveyor Registration No. S-1107
(County Surveyor, Registered Land Surveyor, or other duly authorized official)

Office of Register of Deeds, County of Forest, I hereby certify that the within
instrument was filed in this office for record on the 23rd day of August, 1994
at 2:30 o'clock P. M.

(Register of Deeds)

By Paul J. Jankiewicz Deputy

43913260000

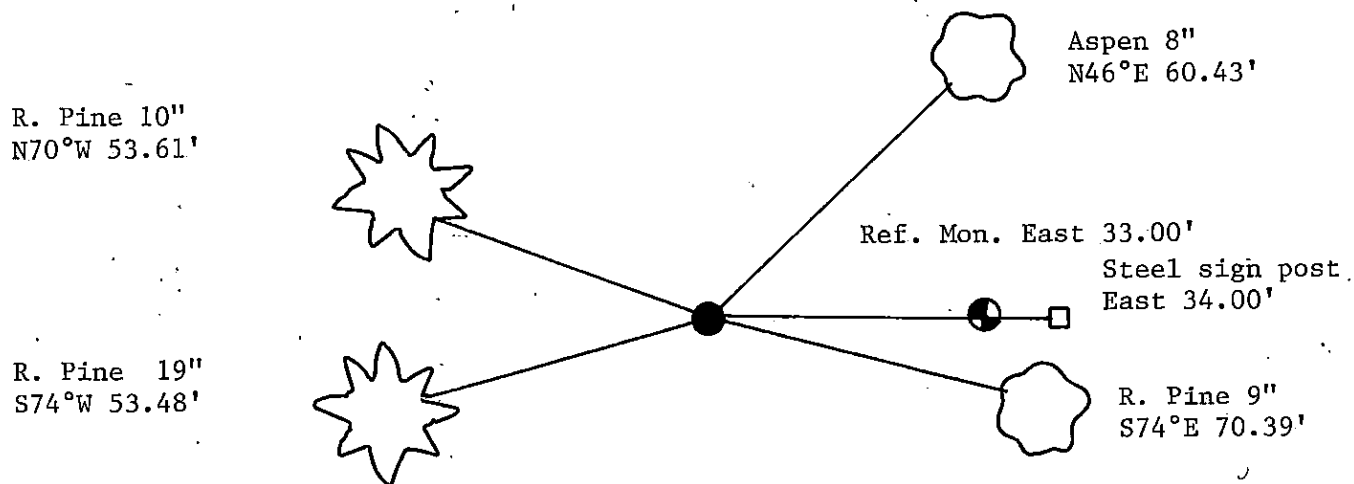
(e) Describe any material discrepancy between the location of the corner as restored or reestablished and the location of that corner as previously restored or reestablished by distance and direction. Show the discrepancy on the plan view drawing under (d), above. Show the distances between the corner as previously restored or reestablished and (1) the corner as restored or reestablished, and (2) to at least 2 of the witness monuments shown on the drawing in (d), above.

See drawing below.

(f) Was the corner restored through acceptance of (1) an obliterated evidence location, or, (2) a found perpetuated location?

Re-established through lost corner proportionate methods.

(g&h) Was the corner reestablished through lost corner proportionate methods? If so, show the method, including the directions and distances to other public land survey corners used as evidence or used for proportioning in determining the corner location?



William B. Cochrane

(i) 1. (type or print name) certify that the corner location shown on this record was determined by me or under my direction and control and that this U.S. Public Land Survey Monument Record is correct and complete to the best of my knowledge and belief.

Signature

William B. Cochrane

Date

12/29/94

Affix Land Surveyor Seal

