

FILED ON:  
01/28/2025 02:33 PM  
CORTNEY BRITTEN CLEEREMAN  
REGISTER OF DEEDS  
FOREST COUNTY WI  
PAGES: 1  
INDEX#:

FOREST COUNTY SURVEY MONUMENT RECORD

NOTE: This form is intended and designed to fulfill all requirements of Wisconsin Administrative Code, Chapter A-E 7.08 U.S. Public Land Survey Monument Record (3) (a-1)

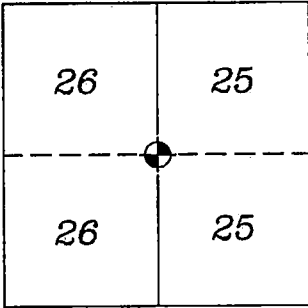
SECTION CORNER COMMON  
TO SECTIONS 25, 26  
TOWNSHIP: 39N  
RANGE: 13E  
TOWN OF ARGONNE

TYPE OF MONUMENT: RR SPIKE

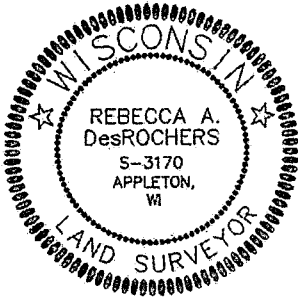
WISCONSIN FOREST COUNTY  
NORTHING: 665806.37'  
EASTING: 856964.40'  
DATUM: NAD83 (2011)  
METHOD NETWORK RTK

FIELD WORK DATE: 10/16/2024  
COMPANY: PAYNE AND DOLAN

FOUND: ☒  
SET: ☐  
RESET: ☐  
RETIED: ☒



CORNER LOCATION  
INDICATED BY:



BASIS FOR MONUMENT LOCATION:  
(DESCRIBE METHOD OF SURVEY AND CORNER AUTHENTICATION)

HISTORY:  
In 1865, William E. Daugherty set section corner post with the following  
BTs: Hemlock, 10" N.23°W., 21 links; Fir 12", S.27°E., 16 links.

In 1992, William B. Cochrane re-establish corner position by  
proportionate methods at midpoint between opposing section corners.

FOUND RR SPIKE AT CORNER LOCATION AND 3 OF THE 4 TIES. REFERENCED  
TIE SHEET FROM S-1107 DATED 12-29-94. SET ONE TIE TO REPLACE  
MISSING TIE.

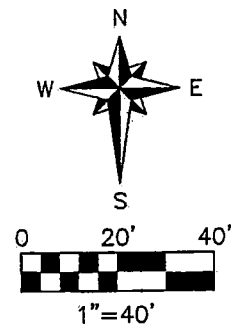
STH 55, REPAVED FALL 2024.  
RR SPIKE REMAINS IN PLACE.  
SET MAG NAIL AT GRADE ON NEWLY PAVED ROAD DIRECTLY ABOVE THE RR  
SPIKE, DERIVED FROM RTK COORDINATES.

I accept this monument in good faith as a FOUND PERPETUATED LOCATION of the corner and was not  
determined through lost-corner-proportionate methods.

I, Rebecca A. DesRochers, Professional Land Surveyor No. 3170, hereby certify that the corner location  
on this record was determined by me or under my direction and control, and that this U.S. Public  
Land Survey Monument Record is correct and complete to best of my knowledge, and belief.

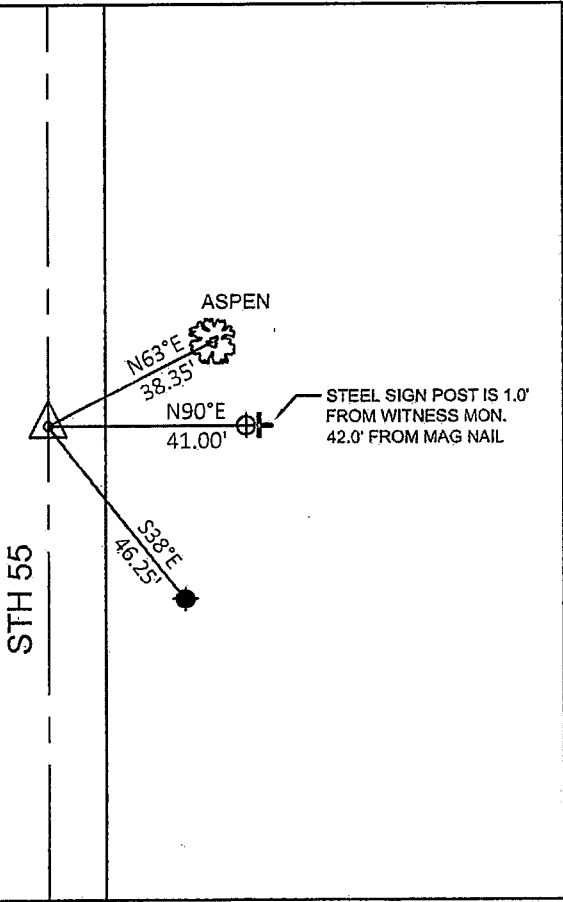
Rebecca A. DesRochers 01/21/2025  
PROFESSIONAL LAND SURVEYOR DATED

TIE SKETCH



- WITNESS MON. REBAR W/1" ALUM. CAP, SET
- STEEL FENCE POST, FOUND
- COUNTY WITNESS, ALUM. MON., FOUND
- WITNESS TREE, FOUND
- SURVEY MON. MAG NAIL, SET

NOTE:  
ALL WITNESS BEARINGS ARE  
REFERENCED TO MAGNETIC NORTH



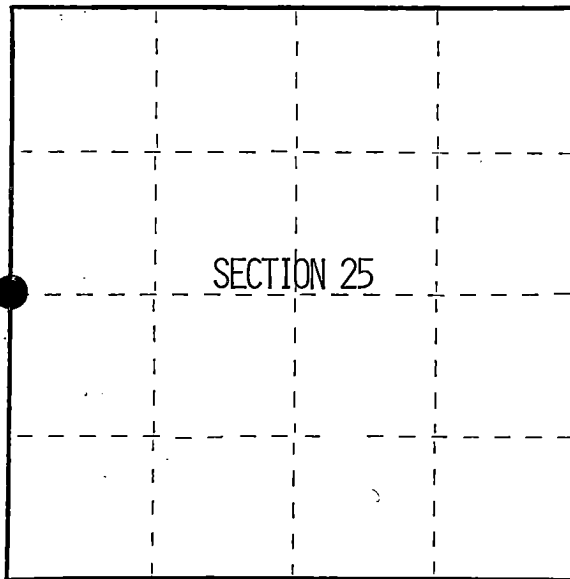
# CERTIFIED LAND CORNER RESTORATION

Index No. T-21

State of Wisconsin }  
County of Forest } ss.

I William B. Cochrane, do hereby certify that on the 5th day of April, 1993, I found evidence of the West quarter corner of section 25 Township 39, North, Range 13 East, Fourth Principal Meridian, as described hereon; and that from this evidence I established a new monument and accessories as described hereon to perpetuate the original location of this corner.

Resident witnesses:



● = Corner monument restored.

History of original corner establishment:

Original Government Survey by William E. Daugherty in 1865.  
At 40 chains North between sections 25 and 26, set post from which:  
Fir 12" S27°E 16 lks  
Hemlock 10" N23°W 21 lks

Description of corner evidence found:

No corner evidence was found.

Description of monument and accessories I established to perpetuate the original location of this corner.

At midpoint between opposing section corners and in the center line of highway 55, set a railroad spike flush with the surface. from which the following bear:

Aspen	10"	N63°E	38.35 feet
Balsam	6"	S59°E	44.40 feet

Reference Monument 2½"X36" Aluminum pipe monument 2½ feet in the ground with an aluminum cap stamped: T39N, R13E, 1/4, S26, S25, 1993, S-1107.

Dated at Hiles, Wis., this 29th day of December, 1994

Signature William B. Cochrane Title Land Surveyor Registration No. S-1107  
(County Surveyor, Registered Land Surveyor, or other duly authorized official)

Office of Register of Deeds, County of Forest, I hereby certify that the within instrument was filed in this office for record on the 23rd day of August, 1994 at 2:30 o'clock P M.

(Register of Deeds)  
By Paul J. Lawrence Deputy

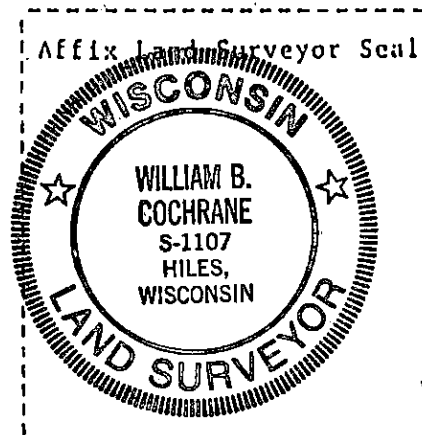
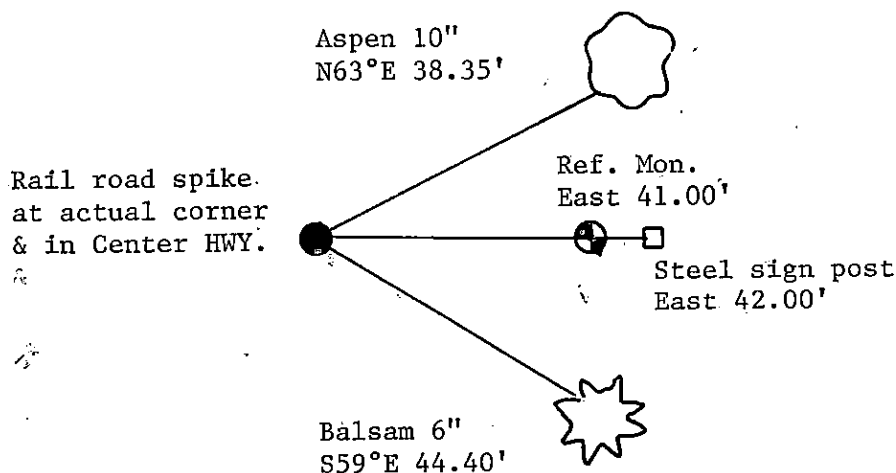
- (e) Describe any material discrepancy between the location of the corner as restored or reestablished and the location of that corner as previously restored or reestablished by distance and direction. Show the discrepancy on the plan view drawing under (d), above. Show the distances between the corner as previously restored or reestablished and (1) the corner as restored or reestablished, and (2) to at least 2 of the witness monuments shown on the drawing in (d), above.

See drawing below.

- (f) Was the corner restored through acceptance of (1) an obliterated evidence location, or, (2) a found perpetuated location?

Corner is re-established at proportionate distance and in the center line of State highway 55.

- (g&h) Was the corner reestablished through lost corner proportionate methods? If so, show the method, including the directions and distances to other public land survey corners used as evidence or used for proportioning in determining the corner location?



- (i) I, William B. Cochrane  
(type or print name) certify that the corner location shown on this record was determined by me or under my direction and control and that this U.S. Public Land Survey Monument Record is correct and complete to the best of my knowledge and belief.

William B. Cochrane 12/29/94  
Signature Date