

FILED ON:
01/28/2025 02:33 PM
CORTNEY BRITTEN CLEEREMAN
REGISTER OF DEEDS
FOREST COUNTY WI
PAGES: 1
INDEX#:

FOREST COUNTY SURVEY MONUMENT RECORD

NOTE: This form is intended and designed to fulfill all requirements of Wisconsin Administrative Code, Chapter A-E 7.08 U.S. Public Land Survey Monument Record (S) (a-1)

SECTION CORNER COMMON
TO SECTIONS 1, 2, 35, 36
TOWNSHIP: 38N, 39N
RANGE: 13E
TOWN OF ARGONNE


TYPE OF MONUMENT: RR SPIKE

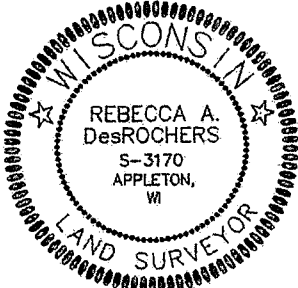
WISCRS FOREST COUNTY
NORTHING: 657849.40'
EASTING: 857271.27'
DATUM: NAD83 (2011)
METHOD NETWORK RTK

FIELD WORK DATE: 10/16/2024
COMPANY: PAYNE AND DOLAN

FOUND: ☒
SET: ☐
RESET: ☐
RETIED: ☐

35	36
T39N	T39N
T38N	T38N
2	1

CORNER LOCATION
INDICATED BY: 



BASIS FOR MONUMENT LOCATION:
(DESCRIBE METHOD OF SURVEY AND CORNER AUTHENTICATION)

HISTORY:
In 1858, Alfred Millard set section corner post with the following BTs:
Hemlock, 14" N.05°W., 41 links; Y. Birch 12", N.34°E., 31 links; Y. Birch
10", S.54°E., 52 links; Hemlock, 14", S.05°W. 56 links.

In 1992, William B. Cochrane re-establish corner position by single
proportionate methods. Set RR spike flush with road surface.

FOUND RR SPIKE AT CORNER LOCATION AND 6 OF THE 6 TIES. REFERENCED
TIE SHEET FROM S-1107 DATED 01-03-95.

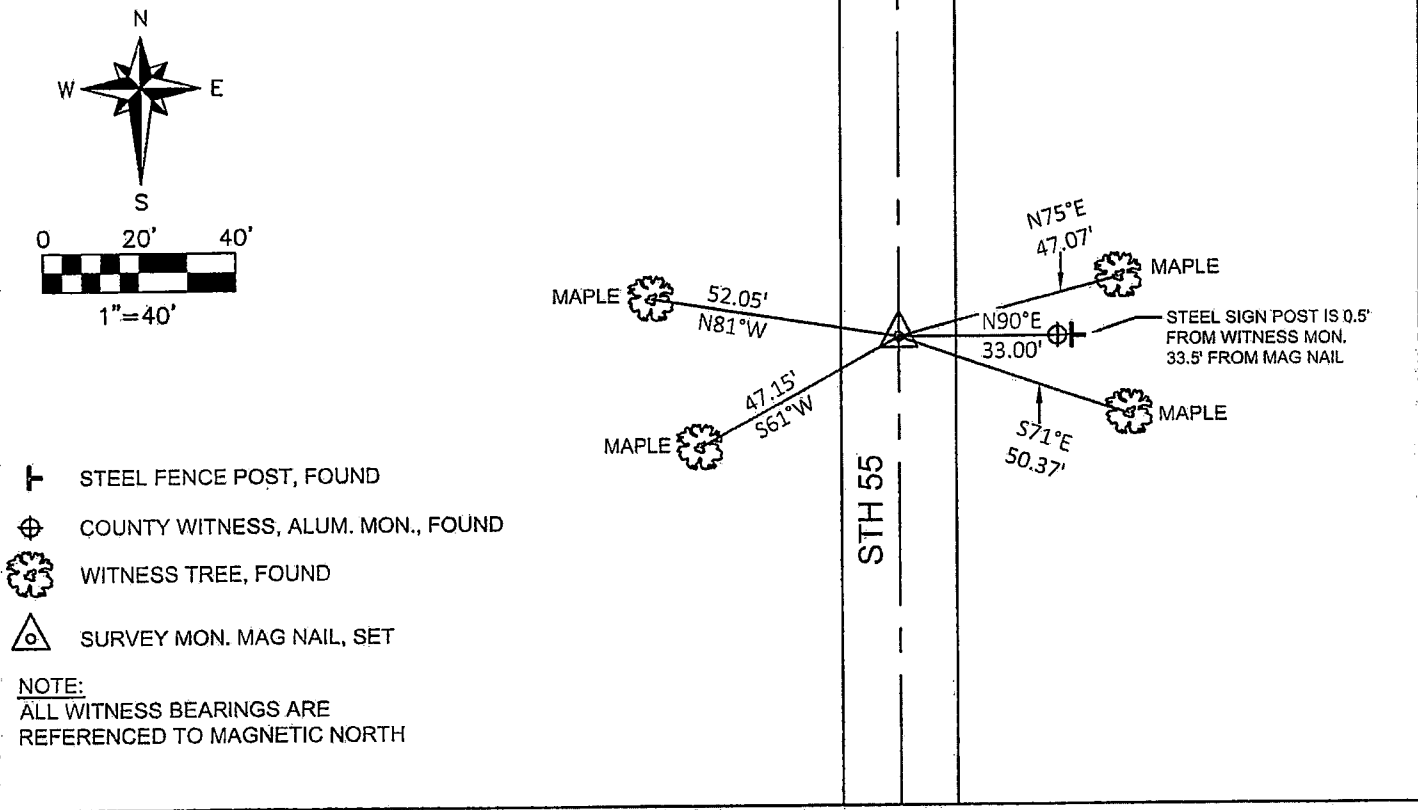
STH 55, REPAVED FALL 2024.
RR SPIKE REMAINS IN PLACE.
SET MAG NAIL AT GRADE ON NEWLY PAVED ROAD DIRECTLY ABOVE THE RR
SPIKE, DERIVED FROM RTK COORDINATES.

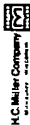
I accept this momument in good faith as a FOUND PERPETUATED LOCATION of the corner and was not
determined through lost-corner-proportionate methods.

I, Rebecca A. DesRochers, Professional Land Surveyor No. 3170, hereby cerify that the corner location
on this record was determined by me or under my direction and control, and that this U.S. Public
Land Survey Monument Record is correct and complete to best of my knowledge, and belief.

Rebecca A. DesRochers 01/21/2025
PROFESSIONAL LAND SURVEYOR DATED

TIE SKETCH





Stock No. 26273

156548

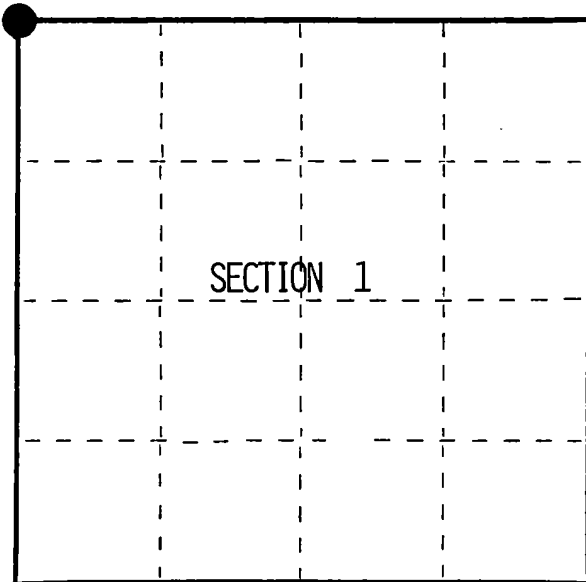
FORM 985 H. C. MILLER CO., MILWAUKEE

State of Wisconsin }
County of Forest } ss.

I, William B. Cochran, do hereby
certify that on the 29th day
of April, 1992, I found
evidence of the Northwest Section
corner of Section 1
Township 38, North, Range
13 East, Fourth Principal Meridian,
as described hereon; and that from this evidence
I established a new monument and accessories
as described hereon to perpetuate the original
location of this corner.

Resident witnesses:

.....
.....
.....



● = Corner monument restored.

CERTIFIED LAND CORNER RESTORATION

Index No. A-21

History of original corner establishment:

Original Government survey of the Township lines was done in 1858 by Alfred Millard.
West between sections 1 and 36 at 80 chains set post. From which:

Hemlock	14"	N05°W	41 lks
Y. Birch	12"	N34°E	31 lks
Y. Birch	10"	S54°E	52 lks
Hemlock	14"	S05°W	56 lks

Description of corner evidence found:

No corner evidence was found.

Re-establish the corner position by single proportionate methods.

Description of monument and accessories I established to perpetuate the original location of this corner.
At the corner position, set a railroad spike flush with the road surface from which:

Maple	10"	N75°E	47.07 feet
Maple	10"	S71°E	50.37 feet
Maple	10"	S61°W	47.15 feet
Maple	10"	N81°W	52.05 feet

Reference monument 2 1/2" X 36" aluminum pipe with an aluminum cap stamped: Witness corner,
T39N, R13E, S35, S36, S2, S1, 1992, T38, West 33 ft, S-1107. from which:

Steel sign post	East	.50 feet
-----------------	------	----------

Dated at Hiles, Wis., this 3 rd day of January, 1995Signature William B. Cochran Title Land Surveyor Registration No. S-1107
(County Surveyor, Registered Land Surveyor, or other duly authorized official)

Office of Register of Deeds, County of Forest, I hereby certify that the within
instrument was filed in this office for record on the 23rd day of August, 1996
at 2:30 o'clock P. M.

(Register of Deeds)

By Hal Janiewicz Deputy

4391335 0000

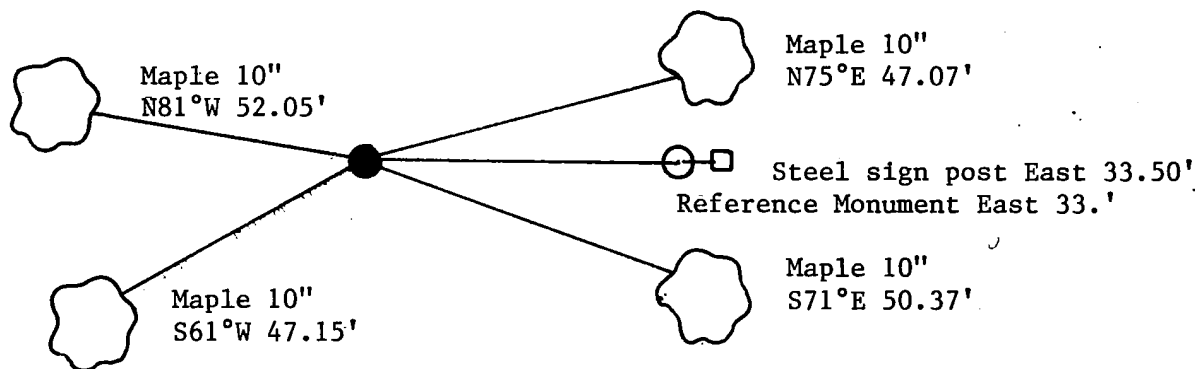
- (e) Describe any material discrepancy between the location of the corner as restored or reestablished and the location of that corner as previously restored or reestablished by distance and direction. Show the discrepancy on the plan view drawing under (d), above. Show the distances between the corner as previously restored or reestablished and (1) the corner as restored or reestablished, and (2) to at least 2 of the witness monuments shown on the drawing in (d), above.

See drawing below.

- (f) Was the corner restored through acceptance of (1) an obliterated evidence location, or, (2) a found perpetuated location?

Re-established on line between the North Quarter corner of section 2 and the Northeast Section corner of section 1, and in the center line of State Highway 55.

- (gkh) Was the corner reestablished through lost corner proportionate methods? If so, show the method, including the directions and distances to other public land survey corners used as evidence or used for proportioning in determining the corner location?



William B. Cochrane

- (i) I, William B. Cochrane (type or print name) certify that the corner location shown on this record was determined by me or under my direction and control and that this U.S. Public Land Survey Monument Record is correct and complete to the best of my knowledge and belief.

Signature

Date

William B. Cochrane

1/3/95

