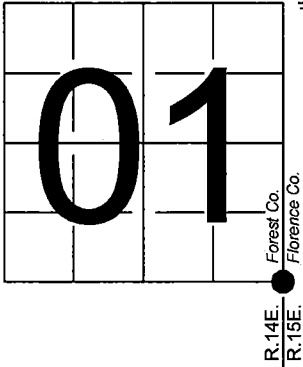


U. S. PUBLIC LAND SURVEY MONUMENT RECORD

NOTE: This form is intended and designed to fulfill all requirements of Wisconsin Administrative Code, Chapter A-E 7.08 U.S. Public Land Survey Monument Record (3) (a-i)

A-E 7.08(3)(a) Identity of corner:
Southeast Corner Section 01,
Township 39 North, Range 14 East
of the Fourth Principal Meridian,
Town of Popple River, Forest County,
Wisconsin

WISCRS - FOREST COUNTY
N: 684,240.755 USft (XXX,XXX.XXX)
E: 894,241.086 USft (XXX,XXX.XXX)
Datum: NAD83 (2011)
GNSS Method RTK
GNSS Control WISCRS VRS



The coordinate value shown has been verified by the average of two or more GPS observations at a markedly different time. Coordinates shown in parenthesis are previously published values.

A-E 7.08(3)(b)

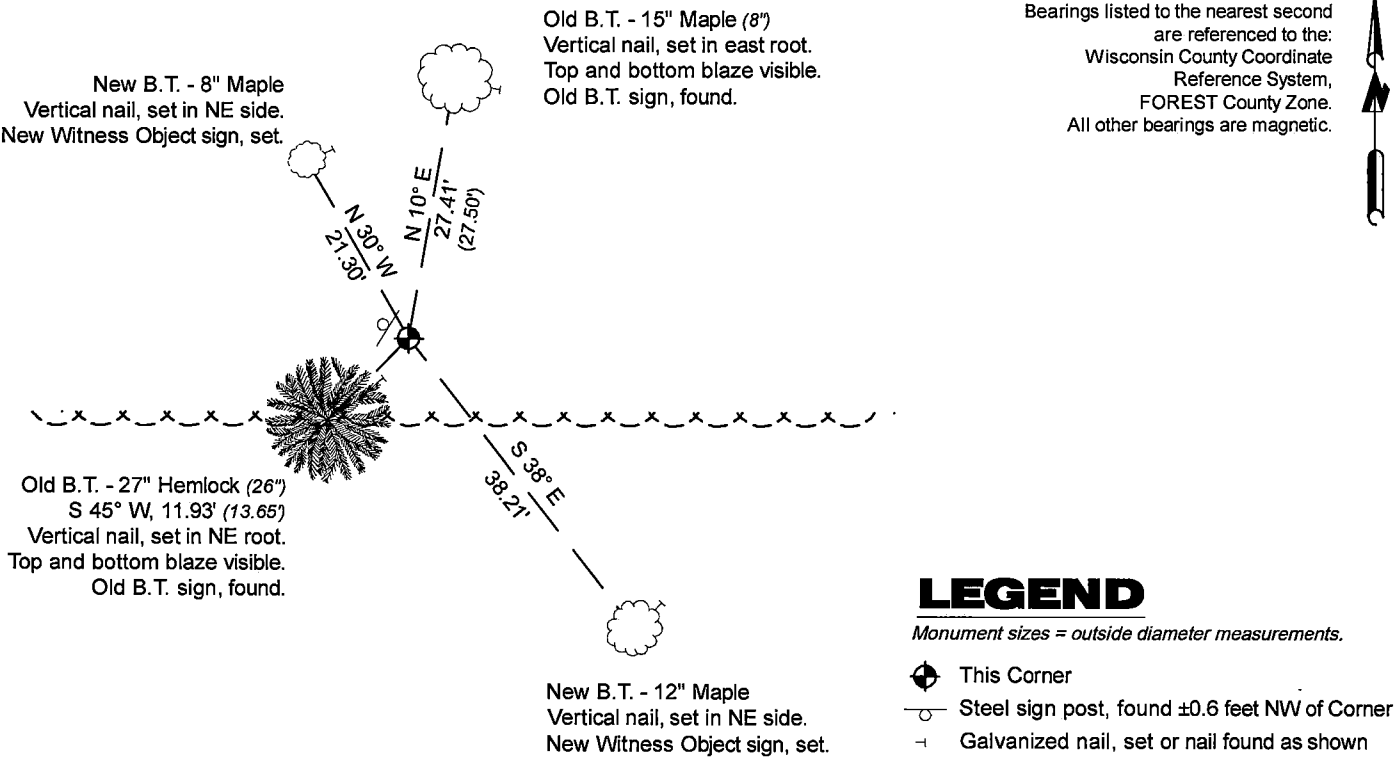
Original Surveyor: Artemas Curtis - May 1858
Sugar 14 - S 35° W, 28 Links, Spruce 15 - N 50° W, 94 Links,
Sugar 10 - N 27° E, 14 Links, Lynn 10 - S 20° E, 21 Links

See previous U.S. Public Land Survey Monument Record - E-25 - March 18, 1986 - Surveyor 1107 - William B. Cochrane - THENCE:

- 1988 - Surveyor 1107 - William B. Cochrane - indicates this position as "2 1/2" aluminum pipe monument 36 inches long with an aluminum cap " on Forest Co. record Map #391401-19890504.
- September 11, 2000 - Surveyor 2197 - Michael A Tremel - indicates this position as "existing U.S.F.S. aluminum monument"" on Florence Co. record Map #M0284.

December 02, 2024 - In performing the 2024 - Forest County - "PLSS Corner Remonumentation and GPS Services" project, I found a 2.4" diameter aluminum pipe monument with a 3.25" diameter aluminum cap stamped to identify the corner. The monument is on highland on an east-west woods line, and extends ±8" above grade. I also found 2 of Cochrane's bearing trees, alive and in good condition. I established 2 new reference monuments as shown below.

A-E 7.08(3)(c)(d) Plan view of corner with references to at least 4 witness monuments.



A-E 7.08(3)(e) 1858 Surveyor set a post, 1986 Surveyor set a 2 1/2" diameter aluminum pipe monument, with an aluminum cap stamped to identify corner, 2000 Surveyor found similar. In 2024, I found a 2.4" diameter aluminum pipe monument with a 3.25" diameter aluminum cap stamped to identify the corner.

A-E 7.08(3)(f) I accept this monument in good faith as a FOUND PERPETUATED LOCATION of the corner.

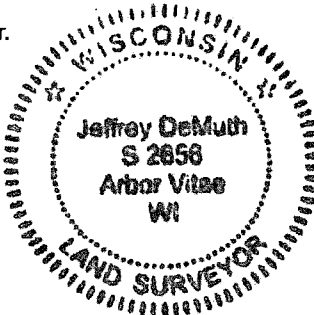
A-E 7.08(3)(g)(h) This corner was not determined through lost-corner-proportionate methods.

A-E 7.08(3)(i) I, Jeffrey L. DeMuth, Professional Land Surveyor No. S-2656, hereby certify that the corner location on this record was determined by me or under my direction and control, and that this U.S. Public Land Survey Monument Record is correct and complete to the best of my knowledge, and belief.

SIGNATURE

December 04, 2024

DATE



43914010000

43914010000

E25

Stock No. 26273

DOCUMENT NUMBER 132333

U.S. PUBLIC LAND SURVEY MONUMENT RECORD

Index No. E-25

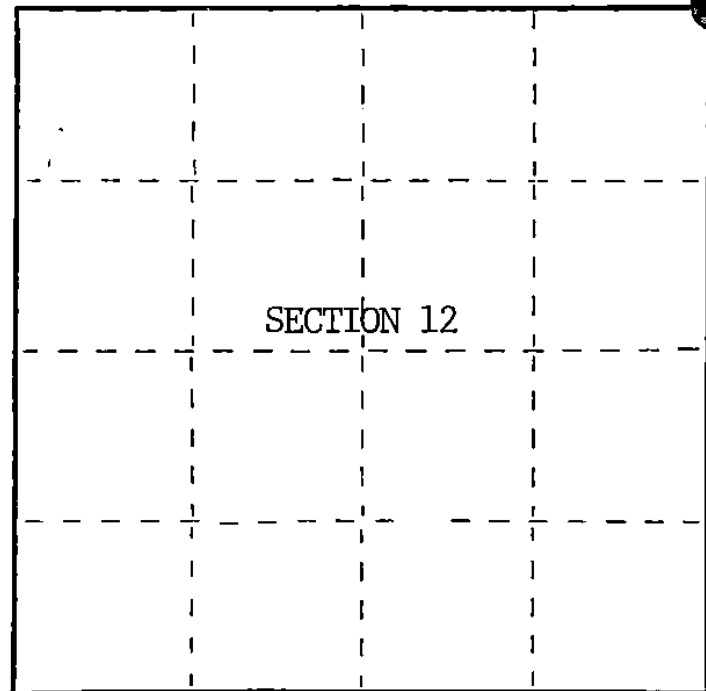
State of Wisconsin }
 County of Forest } ss.

I, William B. Cochrane, do hereby
 certify that on the 21st day
 of August, 1985, I found
 evidence of the Northeast Section
 corner of Section 12
Township 39, North, Range
14 East, Fourth Principal Meridian,
 as described hereon; and that from this evidence
 I established a new monument and accessories
 as described hereon to perpetuate the original
 location of this corner.

Resident witnesses:

Tony Tillman

State Plane Co-ordinates
 N- 263,703.7355
 E-2,337,323.3970



○ = Corner monument restored.

History of original corner establishment:

Original Government Survey in 1858 by Artemas Curtis. North between Sections 7 and 12, 80.00 chs., set Section Corner Post to Sections 1, 6, 7 and 12, from which the following bear; Sugar, 14", S35°W, 28 lks., Spruce, 15", N50°W, 94 lks., Sugar, 10", N27°E, 14 lks., Lynn, 10", S20°E, 21 lks. In 1970, Thomas Arnott, a Local Surveyor, sub-divided Section 12. Found original bearing tree evidence. From evidence, set a 2 inch diameter iron pipe, from which the following bear;

Sugar	12"	S49°E	25.87 feet
Hemlock	24"	S45°W	13.65 feet
Elm	14"	N61°W	37.84 feet

Description of corner evidence found:

Found iron pipe as described and in place, from which the following bear;

Sugar	13"	S49°E	25.87 feet
Hemlock	25"	S45°W	13.65 feet
Elm	15"	N61°W	37.84 feet

All of the above bearing trees were cut down for the Aerial Photo Project.

I accept the location of the iron pipe, in concurrence with bearing tree evidence, as the best available evidence for restoring the corner position.

No original corner evidence was recovered.

Description of monument and accessories I established to perpetuate the original location of this corner.

In place of iron pipe, set a 2½ inch diameter aluminum pipe monument, 3 feet long, 2½ feet in the ground, with an aluminum cap stamped; T39N, R14E, R15E, S1, S6, S7, S12, 1985, S-1107. From which the following new blazed and scribed bearing trees bear;

Maple	8"	N10°E	27.50 feet
Ironwood	10"	S38°E	13.77 feet
Hemlock	26"	S45°W	13.65 feet
Ironwood	12"	N64°W	39.70 feet
Steel Sign Post		NW	1.00 feet

Dated at Hiles, Wis., this 18th day of March, 1986

Signature William B. Cochrane Title Land Surveyor Registration No. S-1107
 (County Surveyor, Registered Land Surveyor, or other duly authorized official)

Office of Register of Deeds, County of Forest, I hereby certify that the within
 instrument was filed in this office for record on the 11th day of March, 1987
 at 3:30 clock P. M.

Paul Aschenbrenner
 (Register of Deeds)

By _____ Deputy

43914010000

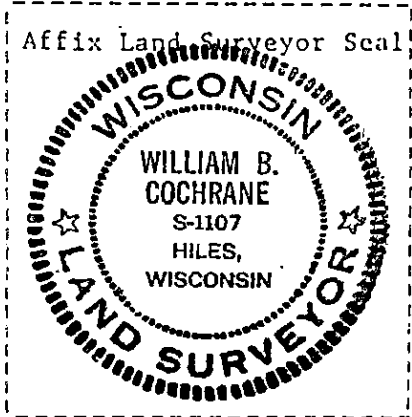
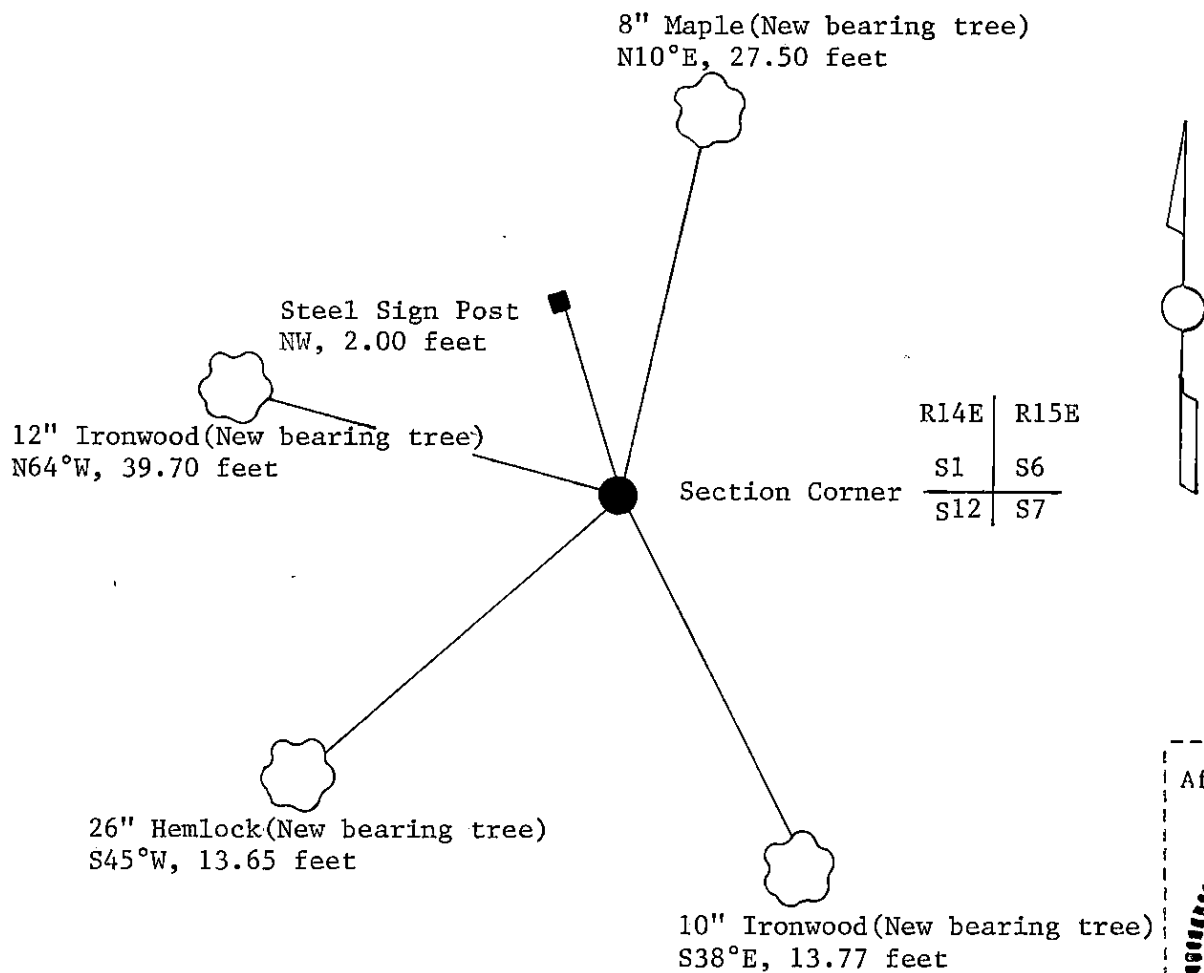
(e) Describe any material discrepancy between the location of the corner as restored or reestablished and the location of that corner as previously restored or reestablished by distance and direction. Show the discrepancy on the plan view drawing under (d), above. Show the distances between the corner as previously restored or reestablished and (1) the corner as restored or reestablished, and (2) to at least 2 of the witness monuments shown on the drawing in (d), above.

See drawing below.

(f) Was the corner restored through acceptance of (1) an obliterated evidence location, or, (2) a found perpetuated location?

Restored from accepted evidence.

(g&h) Was the corner reestablished through lost corner proportionate methods? If so, show the method, including the directions and distances to other public land survey corners used as evidence or used for proportioning in determining the corner location?



(i) I, William B. Cochrane
(type or print name) certify that the corner location shown on this record was determined by me or under my direction and control and that this U.S. Public Land Survey Monument Record is correct and complete to the best of my knowledge and belief.

William B. Cochrane October 7, 1986
Signature Date

Survey requested by: Edward A. [Signature] 3-9-87
District Ranger Date