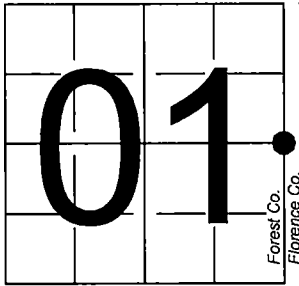


U. S. PUBLIC LAND SURVEY MONUMENT RECORD

NOTE: This form is intended and designed to fulfill all requirements of Wisconsin Administrative Code, Chapter A-E 7.08 U.S. Public Land Survey Monument Record (3) (a-l)

A-E 7.08(3)(a) Identity of corner:
East 1/4 Corner Section 01,
Township 39 North, Range 14 East
of the Fourth Principal Meridian,
Town of Popple River, Forest County,
Wisconsin

WISCRS - FOREST COUNTY
N: 686,874.347 USft (XXX,XXX.XXX)
E: 894,264.907 USft (XXX,XXX.XXX)
Datum: NAD83 (2011)
GNSS Method RTK
GNSS Control WISCORS VRS



T.40N.
T.39N.

R.14E.
R.15E.

The coordinate value shown has been verified by the average of two or more GPS observations at a markedly different time (on witness monument). Coordinates shown in parenthesis are previously published values.

A-E 7.08(3)(b)
Original Surveyor: Artemas Curtis - May 1858 -Cedar 14 - S 27° E, 57 Links

See previous U.S. Public Land Survey Monument Record - C-25 - February 11, 1987 - Surveyor 1107 - William B. Cochrane THENCE:

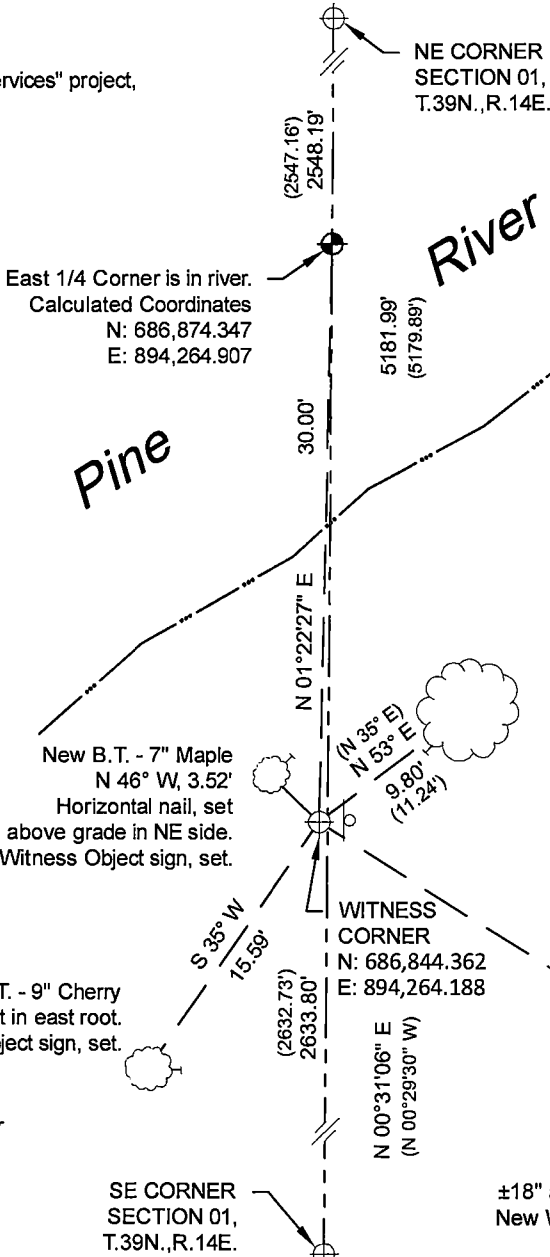
- 1988 - Surveyor 1107 - William B. Cochrane - indicates this position as "falls in Pine River" and previously "set a witness corner which is a 2 1/2" aluminum pipe monument 3 feet long with an aluminum cap stamped" on Forest Co. record Map #391401-19890504.

December 02, 2024
In performing the 2024 - Forest County -
"PLSS Corner Remonumentation and GPS Services" project,
I found the witness monument being
a 2.4" diameter aluminum pipe
monument with a 3.25" diameter
aluminum cap stamped to identify
the corner. The witness monument is
on highland ±15' south of the south
bank of the Pine River, and extends
±15" above grade.
I also found 1 of Cochrane's bearing
trees alive and in good condition.
I established 3 new reference
monuments as shown below.

The East 1/4 location is established
at proportioned measurements from
the SE and NE corners of Section 01,
and on a straight line connecting these
corners.

The witness monument is 0.45 feet
west of a straight line between the
SE and NE corners of Section 01, and
S 01°22'27" W, 30.00' from the
East 1/4 Corner.

A-E 7.08(3)(c)(d) Plan view of corner
with references to at least 4 witness
monuments.



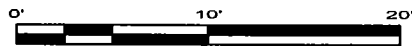
Bearings listed to the nearest
second are referenced to the:
Wisconsin County Coordinate
Reference System,
FOREST County Zone.
All other bearings are magnetic.



LEGEND

Monument sizes = outside
diameter measurements.

- ⊕ This Corner
- ⊖ Steel sign post, reset ±0.5 foot east of Corner
- ⊖ Galvanized nail, set or nail found as shown



A-E 7.08(3)(e) 1858 Surveyor set a post, 1986 Surveyor set a witness to the 1/4 corner, being a 2 1/2" diameter aluminum pipe monument, with an aluminum cap stamped to identify corner, 1988 Surveyor found the same. In 2024, I found a 2.4" diameter aluminum pipe monument with a 3.25" diameter aluminum cap stamped to identify the witness corner.

A-E 7.08(3)(f) I accept this monument in good faith as a FOUND PERPETUATED WITNESS to the corner.

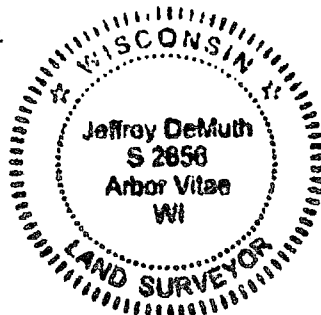
A-E 7.08(3)(g)(h) This corner was previously determined through lost-corner-proportionate methods.

A-E 7.08(3)(i) I, Jeffrey L. DeMuth, Professional Land Surveyor No. S-2656, hereby certify that the corner location on this record was determined by me or under my direction and control, and that this U.S. Public Land Survey Monument Record is correct and complete to the best of my knowledge, and belief.

SIGNATURE

December 4, 2024

DATE



43914012000

43914012000

C25

Stock No. 26273

DOCUMENT NUMBER 132323

U.S. PUBLIC LAND SURVEY MONUMENT RECORD

Index No. C-25

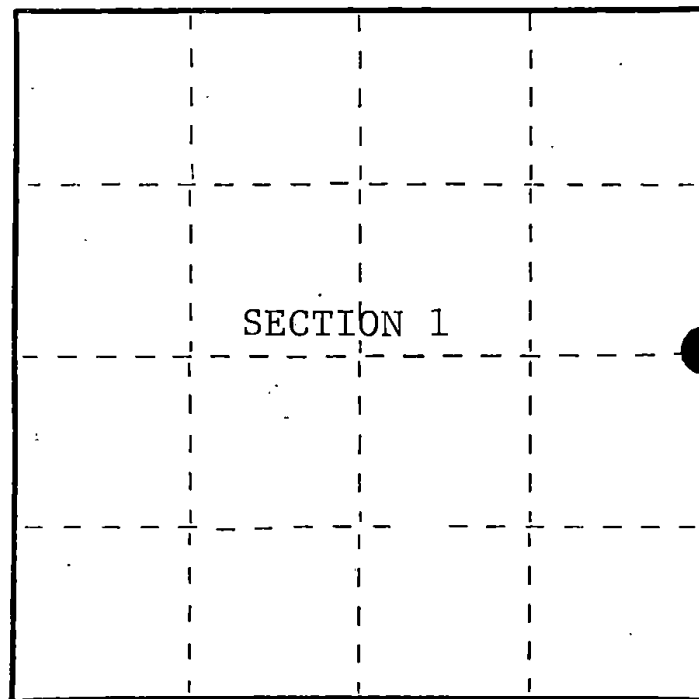
State of Wisconsin }
 County of Forest } ss.

I, William B. Cochran, do hereby
 certify that on the 21st day
 of August, 1985, I found
 evidence of the East Quarter
 corner of Section 1
 Township 39, North, Range
 14 East, Fourth Principal Meridian,
 as described hereon; and that from this evidence
 I established a new monument and accessories
 as described hereon to perpetuate the original
 location of this corner.

Resident witnesses:

Tony Tillman

State Plane Co-ordinates
 N- 266,336.3695
 E-2,337,300.8050



○ = Corner monument restored.

History of original corner establishment:

Original Government Survey in 1858 by Artemas Curtis. North between Sections
 1 and 6, at 40.00 chains, corner is in river, from which the following bear;

| | | | |
|-------|-----|-------|---------|
| Cedar | 14" | S27°E | 57 lks. |
|-------|-----|-------|---------|

Description of corner evidence found:

No corner evidence was recovered.

The corner position is re-established at proportionate distance and on line
 between the Northeast and Southeast Section Corners of Section 1.

Description of monument and accessories I established to perpetuate the original location of this corner.

At a point S00°-29'-30"E, 30.00 feet, set a Witness Corner which is a 2½ inch
 diameter aluminum pipe monument, 3 feet long, 2½ feet in the ground, with an
 aluminum cap stamped; W.C., T39N, R14E, R15E, 1/4, S1, S6, 1986, S-1107. From
 which the following bear;

| | | | |
|-----------------|-----|-------|------------|
| Maple | 13" | N35°E | 11.24 feet |
| Maple | 5" | S82°W | 4.26 feet |
| Steel Sign Post | | East | 0.20 feet |

Dated at Hiles, Wis., this 11th day of February, 1987.

Signature William B. Cochran Title Land Surveyor Registration No. S-1107
 (County Surveyor, Registered Land Surveyor, or other duly authorized official)

Office of Register of Deeds, County of Forest, I hereby certify that the within
 instrument was filed in this office for record on the 11th day of March, 1987
 at 3:30 o'clock P. M.

Paul Schendrenner
 (Register of Deeds)

By _____ Deputy

43914012000

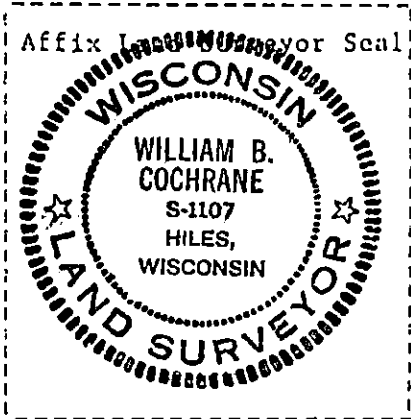
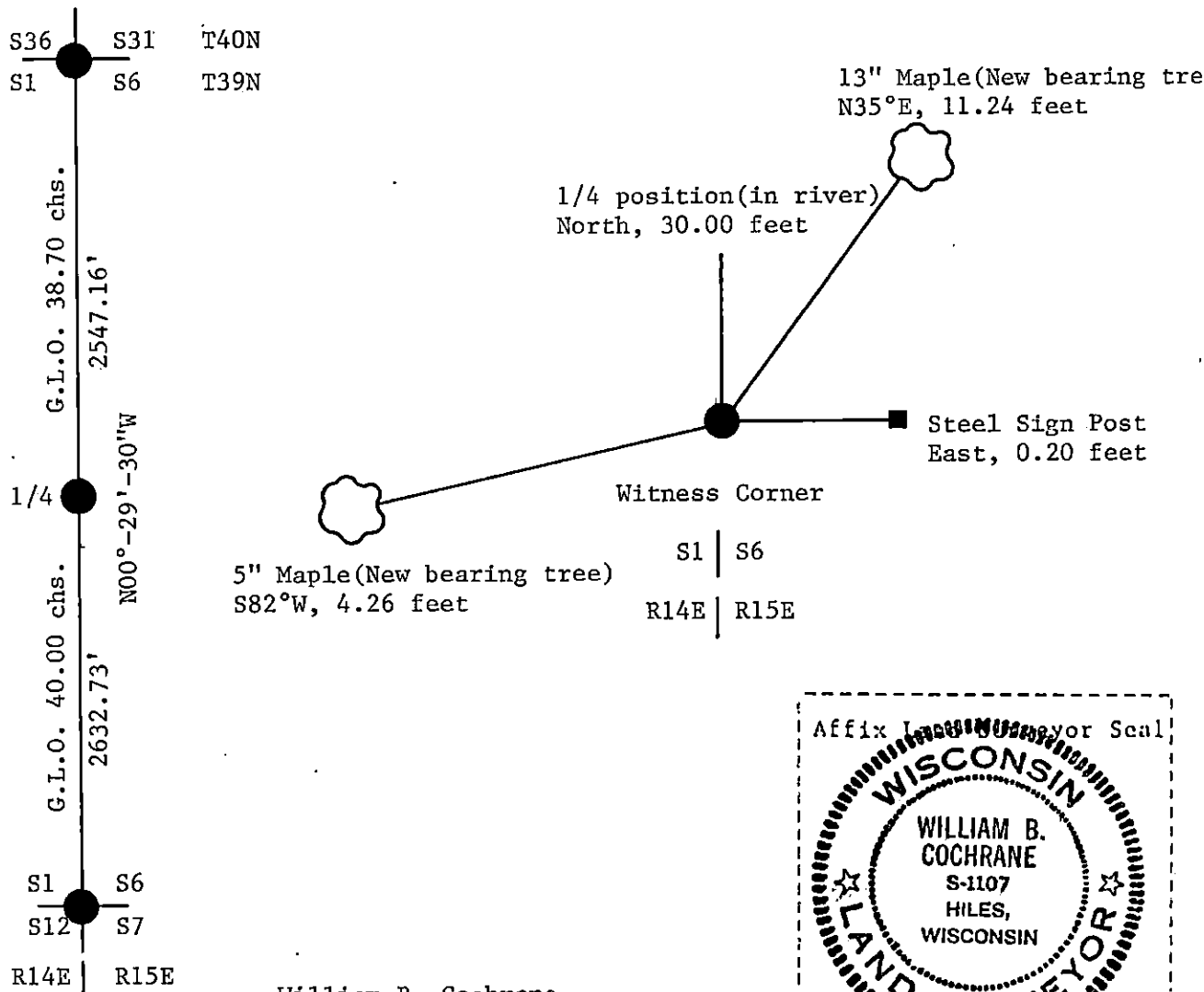
(e) Describe any material discrepancy between the location of the corner as restored or reestablished and the location of that corner as previously restored or reestablished by distance and direction. Show the discrepancy on the plan view drawing under (d), above. Show the distances between the corner as previously restored or reestablished and (1) the corner as restored or reestablished, and (2) to at least 2 of the witness monuments shown on the drawing in (d), above.

See drawing below.

(f) Was the corner restored through acceptance of (1) an obliterated evidence location, or, (2) a found perpetuated location?

This corner position was re-established using State Plane Co-ordinates computed from Aerial Photography and a Global Positioning Satellite Survey. The corner position was located in the field using a North Seeking Gyro, an Electronic Distance Meter, and/or a steel tape.

(g&h) Was the corner reestablished through lost corner proportionate methods? If so, show the method, including the directions and distances to other public land survey corners used as evidence or used for proportioning in determining the corner location?



(i) I, William B. Cochrane (type or print name) certify that the corner location shown on this record was determined by me or under my direction and control and that this U.S. Public Land Survey Monument Record is correct and complete to the best of my knowledge and belief.

William B. Cochrane Signature February 11, 1987 Date

Survey requested by, David R. [Signature] 3-9-87 Date
District Ranger