

U. S. PUBLIC LAND SURVEY MONUMENT RECORD

NOTE: This form is intended and designed to fulfill all requirements of Wisconsin Administrative Code, Chapter A-E 7.08 U.S. Public Land Survey Monument Record (3) (a-i)

A-E 7.08(3)(a) Identity of corner:
East 1/4 Corner Section 12,
Township 39 North, Range 14 East
of the Fourth Principal Meridian,
Town of Popple River, Forest County,
Wisconsin

WISCRS - FOREST COUNTY
N: 681,596.521 USft (XXX,XXX.XXX)
E: 894,223.981 USft (XXX,XXX.XXX)
Datum: NAD83 (2011)
GNSS Method RTK
GNSS Control WISCORS VRS



The coordinate value shown has been verified by the average of two or more GPS observations at a markedly different time. Coordinates shown in parenthesis are previously published values.

A-E 7.08(3)(b)

Original Surveyor: Artemas Curtis - May 1858
Yellow Birch 12 - S 18° W, 21 Links, Sugar 16 - N 86° E, 52 Links,

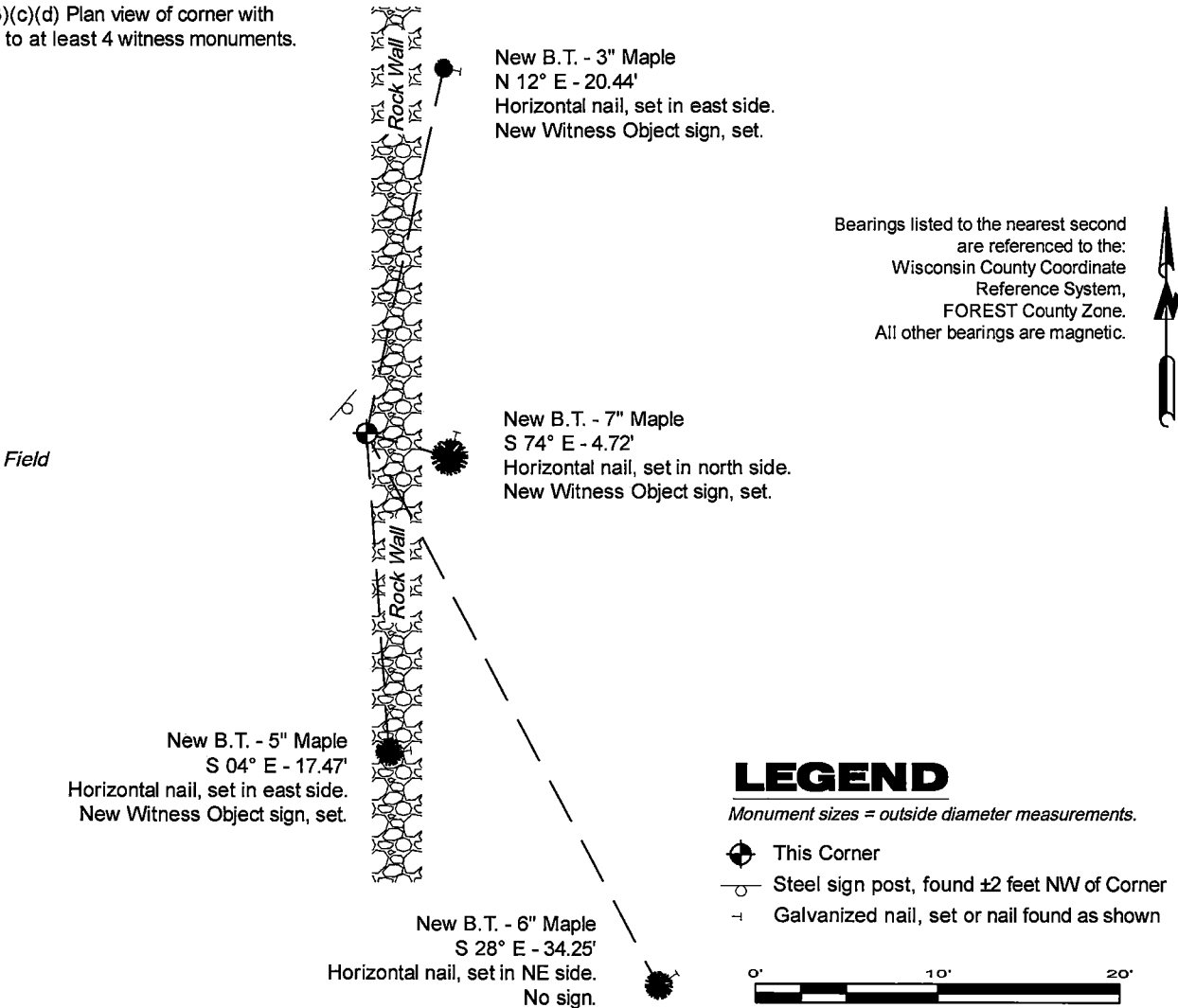
See previous U.S. Public Land Survey Monument Record - G-25 - March 19, 1986 - Surveyor 1107 - William B. Cochrane THENCE:

- September 11, 2000 - Surveyor 2197 - Michael A Tremi - indicates this position as "existing U.S.F.S. aluminum monument" on Florence Co. record Map #M0284.

November 22, 2024 - In performing the 2024 - Forest County - "PLSS Corner Remonumentation and GPS Services" project, I found a 2.25" diameter aluminum pipe monument with a 3.25" diameter aluminum cap stamped to identify the corner. The monument extends ±14" above grade, is on highland at the east edge of a field and the west edge of a north-south stone wall. I did not find any of Cochrane's bearing trees.

I established 4 new reference monuments as shown below.

A-E 7.08(3)(c)(d) Plan view of corner with references to at least 4 witness monuments.



A-E 7.08(3)(e) 1858 Surveyor set a post, 1986 Surveyor set a 2 1/2" diameter aluminum pipe with an aluminum cap stamped to identify corner, 2000 Surveyor found similar. In 2024, I found a 2.25" diameter aluminum pipe monument with a 3.25" diameter aluminum cap stamped to identify the corner.

A-E 7.08(3)(f) I accept this monument in good faith as a FOUND PERPETUATED LOCATION of the corner.

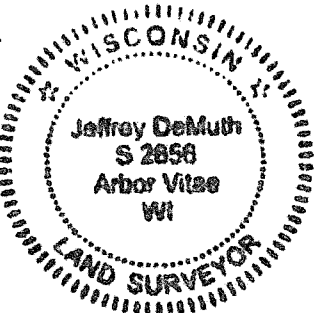
A-E 7.08(3)(g)(h) This corner was previously determined through lost-corner-proportionate methods.

A-E 7.08(3)(i) I, Jeffrey L. DeMuth, Professional Land Surveyor No. S-2656, hereby certify that the corner location on this record was determined by me or under my direction and control, and that this U.S. Public Land Survey Monument Record is correct and complete to the best of my knowledge, and belief.

SIGNATURE

November 27 2024

DATE



43914122000

43914122000

G25

U.S. PUBLIC LAND SURVEY MONUMENT RECORD

Index No. G-25

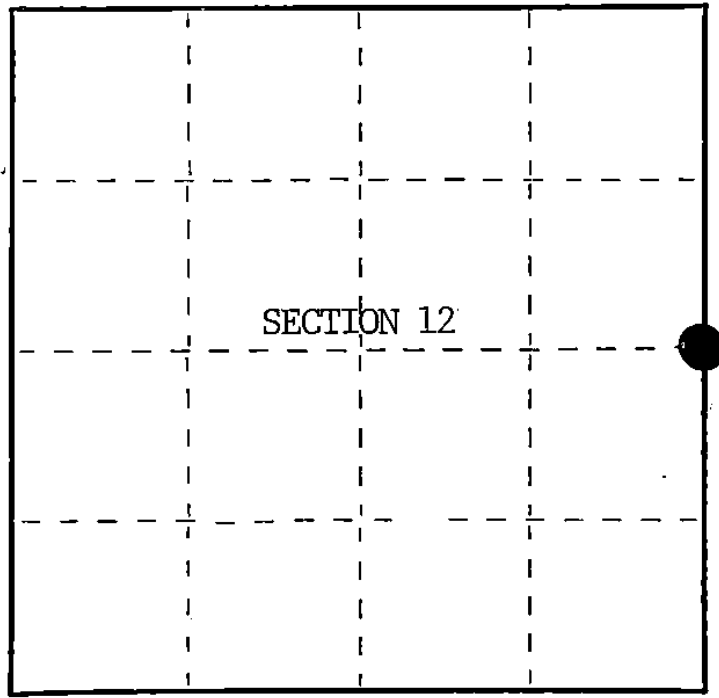
State of Wisconsin }
County of Forest } ss.

I, William B. Cochrane, do hereby
certify that on the 22nd day
of August, 1985, I found
evidence of the East Quarter
corner of Section 12
Township 39 North, Range
14 East, Fourth Principal Meridian,
as described hereon; and that from this evidence
I established a new monument and accessories
as described hereon to perpetuate the original
location of this corner.

Resident witnesses:

Tony Tillman

State Plane Co-ordinates
N- 261,060.3430
E-2,337,352.1400



○ = Corner monument restored.

History of original corner establishment:

Original Government Survey in 1858 by Artemas Curtis. North between Sections 7 and 12, 40.00 chains, set Quarter Section Post to Sections 7 and 12, from which the following bear; Y. Birch, 12", S18°W, 21 lks., Sugar, 16", N86°E, 52 lks. In 1970, Thomas Arnott, a Local Surveyor, sub-divided Section 12. Re-established the corner position at proportionate distance and on line between opposing Section Corners. At the corner position, set a 2 inch diameter iron pipe, from which the following bear;

Sugar	6"	N61°E	43.92 feet
Sugar	8"	S64°E	38.15 feet

Description of corner evidence found:

Found iron pipe as described and in place, from which the following bear;

Sugar	7"	N61°E	43.92 feet
Sugar(Stump)		S64°E	38.15 feet

I accept the location of the iron pipe, in concurrence with bearing tree evidence, as the best available evidence for restoring the corner position.

No original corner evidence was recovered.

Description of monument and accessories I established to perpetuate the original location of this corner.

In place of iron pipe, set a 2½ inch diameter aluminum pipe monument, 3 feet long, 2½ feet in the ground, with an aluminum cap stamped; T39N, R14E, 1/4, S7, S12, 1985, S-1107. From which the following new blazed and scribed bearing trees bear;

Maple	7"	S32°E	66.36 feet
Steel Sign Post		NE	2.00 feet

Dated at Hills, Wis., this 19th day of March, 1986.

Signature: William B. Cochrane Title: Land Surveyor Registration No. S-1107
(County Surveyor, Registered Land Surveyor, or other duly authorized official)

Office of Register of Deeds, County of Forest, I hereby certify that the within instrument was filed in this office for record on the 11th day of March, 1987 at 3:30 o'clock P. M.

Paul Aschenbrenner
(Register of Deeds)

By Deputy

FORM NO. 985-A
H.C. Miller Company
MILWAUKEE, WIS.

Stock No. 26273

DOCUMENT NUMBER 132340

43914122000

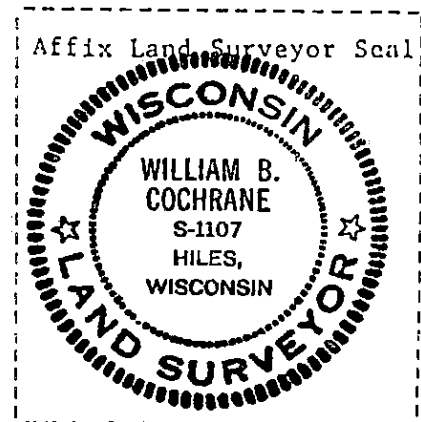
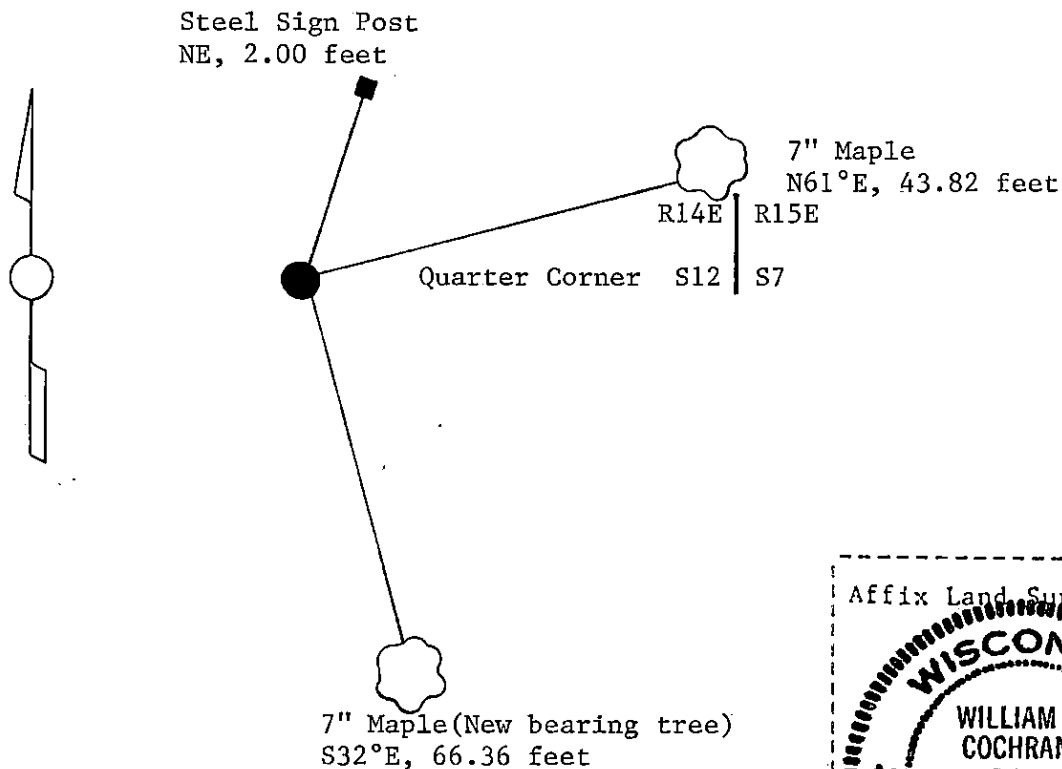
(e) Describe any material discrepancy between the location of the corner as restored or reestablished and the location of that corner as previously restored or reestablished by distance and direction. Show the discrepancy on the plan view drawing under (d), above. Show the distances between the corner as previously restored or reestablished and (1) the corner as restored or reestablished, and (2) to at least 2 of the witness monuments shown on the drawing in (d), above.

See drawing below.

(f) Was the corner restored through acceptance of (1) an obliterated evidence location, or, (2) a found perpetuated location?

Restored from accepted evidence.

(g&h) Was the corner reestablished through lost corner proportionate methods? If so, show the method, including the directions and distances to other public land survey corners used as evidence or used for proportioning in determining the corner location?



(i) I, William B. Cochrane
(type or print name) certify that the corner location shown on this record was determined by me or under my direction and control and that this U.S. Public Land Survey Monument Record is correct and complete to the best of my knowledge and belief.

William B. Cochrane October 7, 1986
Signature Date

Survey requested by: [Signature] 3-9-87
District Ranger Date