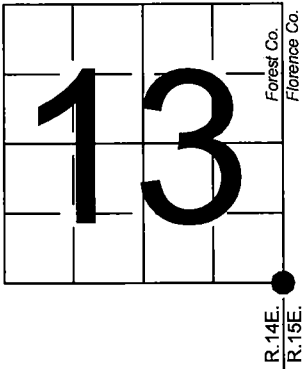


U. S. PUBLIC LAND SURVEY MONUMENT RECORD

NOTE: This form is intended and designed to fulfill all requirements of Wisconsin Administrative Code, Chapter A-E 7.08 U.S. Public Land Survey Monument Record (3) (a-i)

A-E 7.08(3)(a) Identity of corner:
Southeast Corner Section 13,
Township 39 North, Range 14 East
of the Fourth Principal Meridian,
Town of Popple River, Forest County,
Wisconsin

WISCRS - FOREST COUNTY
N: 673,714.200 USft (XXX,XXX.XXX)
E: 894,201.568 USft (XXX,XXX.XXX)
Datum: NAD83 (2011)
GNSS Method RTK
GNSS Control WISCORS VRS



The coordinate value shown has been verified by the average of two or more GPS observations at a markedly different time. Coordinates shown in parenthesis are previously published values.

A-E 7.08(3)(b)

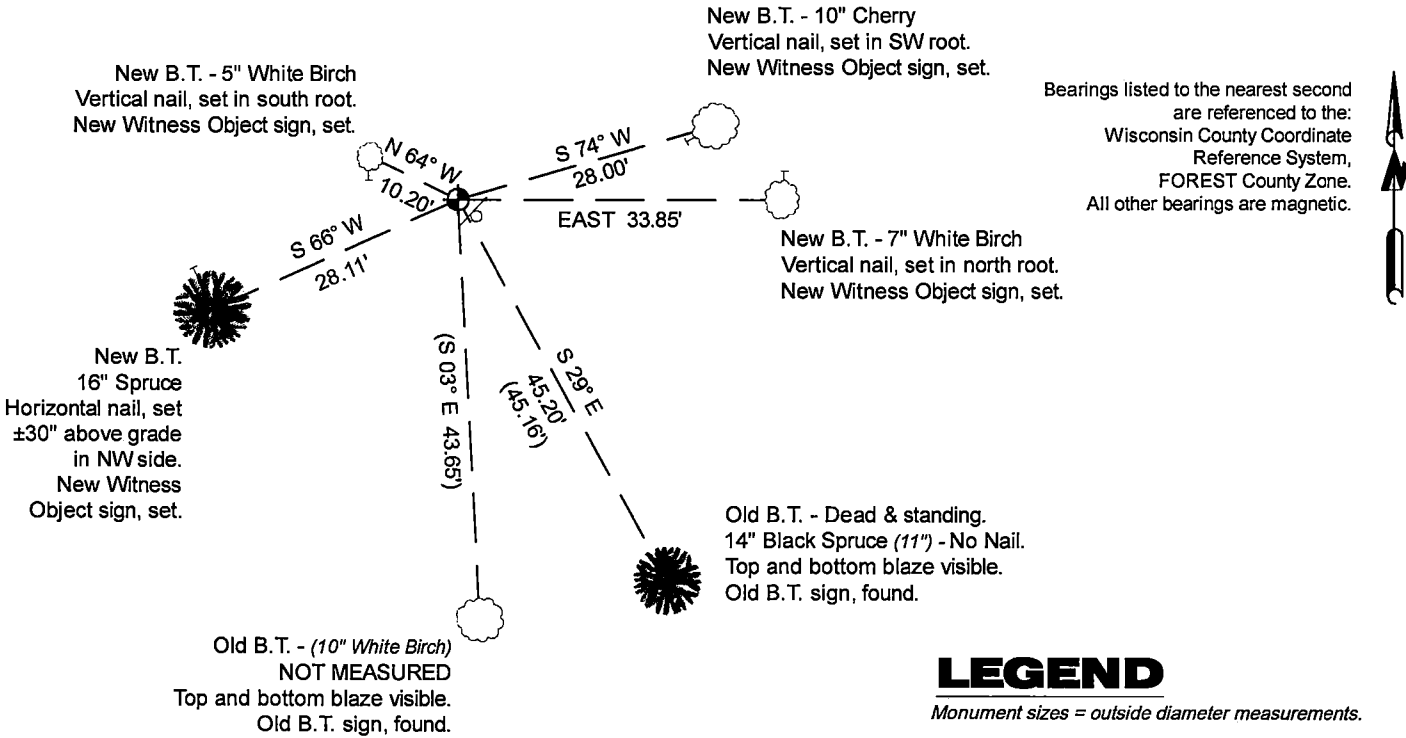
Original Surveyor: Artemas Curtis - May 1858
White Birch 6 - S 19° W, 17 Links, Tamarac 6 - N 30° W, 18 Links
Spruce 10 - N 30° E, 36 Links, Cedar 12 - S 40° E, 39 Links

See previous U.S. Public Land Survey Monument Record - N-25 - February 5, 1986 - Surveyor 1107 - William B. Cochrane - THENCE:

- 1988 - Surveyor 1107 - William B. Cochrane - indicates this position as "2 1/2" galvanized iron pipe monument 36 inches long with a brass cap " on Forest Co. record Map #391424-19890412 and #391413-19890504..

November 20, 2024 - In performing the 2024 - Forest County - "PLSS Corner Remonumentation and GPS Services" project, I found a 2.25" diameter galvanized iron pipe monument with a 3" diameter brass cap stamped to identify the corner. The monument is ±50' south of the Long Lake Road centerline (aka. Zepp Road), and extends ±18" above grade. I also found 1 of Cochrane's bearing trees alive and in good condition, and 1 of Resvick's bearing trees dead and standing. I established 4 new reference monuments as shown below.

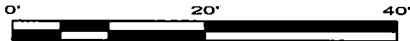
A-E 7.08(3)(c)(d) Plan view of corner with references to at least 4 witness monuments.



LEGEND

Monument sizes = outside diameter measurements.

- ⊕ This Corner
- Steel sign post, found ±0.5 foot SE of Corner
- Galvanized nail, set or nail found as shown



A-E 7.08(3)(e) 1858 Surveyor set a post, 1986 Surveyor found a 2" inside diameter galvanized iron pipe, with a brass cap stamped to identify corner, 1988 Surveyor found a 2 1/2" diameter galvanized iron pipe, with a brass cap. I found a 2.25" diameter galvanized iron pipe monument with a 3" diameter brass cap stamped to identify the corner in 2024.

A-E 7.08(3)(f) I accept this monument in good faith as a FOUND PERPETUATED LOCATION of the corner.

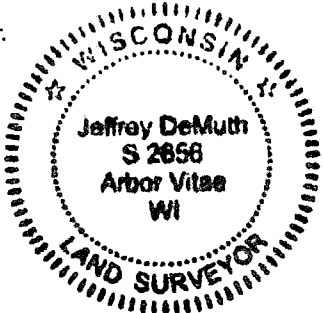
A-E 7.08(3)(g)(h) This corner was not determined through lost-corner-proportionate methods.

A-E 7.08(3)(i) I, Jeffrey L. DeMuth, Professional Land Surveyor No. S-2656, hereby certify that the corner location on this record was determined by me or under my direction and control, and that this U.S. Public Land Survey Monument Record is correct and complete to the best of my knowledge, and belief.

SIGNATURE

November 26, 2024

DATE



43914130000

43914130000

N25

CERTIFIED LAND CORNER RESTORATION

State of Wisconsin }
County of Forest } ss.

I Jean F. Resvick, do hereby certify that on the 3 day of November, 1975, I found evidence of the Northeast Section corner of Section 24 Township 39 North, Range 14 East, Fourth Principal Meridian, as described hereon; and that from this evidence I established a new monument and accessories as described hereon to perpetuate the original location of this corner:

Description of original monument and accessories and subsequent restorations:

Survey in 1858 by Artemas Curtis
80.00 chains north between Sections 19 and 24 set post
White birch 6, S19W, 17 lks.
Tamarack 6, N30W, 18 lks.
Spruce 10, N30E, 36 lks.
Cedar 12, S40E, 39 lks.
0.50 chain south leave swamp bears east.
4.00 chains north leave swamp bears west.
17.00 chains south enter swamp, bears SW & SE
23.48 chains south, to lake set M.C.
46.68 chains south, over lake set M.C.
Description of corner evidence found:

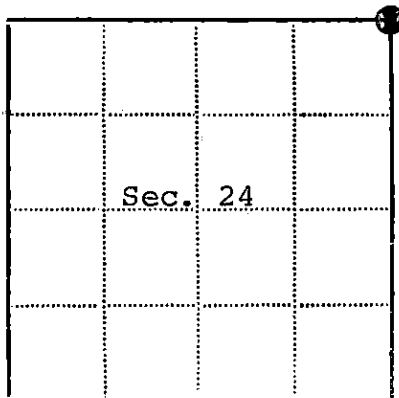
The location for this corner was muck filled and in excavating the muck fill no evidence of corner was found. The corner was restored using the Meander Corners on the lake and the quarter corner on the north to check total distances and the swamp calls of the original survey were found to agree. By locating this corner in relation to the natural calls, it was found that the road west was also parallel to the section line.

Description of monument and accessories I established to perpetuate the location of this corner:

At the corner position located by natural calls set a 2 inch inside diameter galvanized iron pipe, 5 feet long, filled with concrete, with brass cap stamped:
T39N, R14E, S13, S18, S24, S19, 1975, S-802

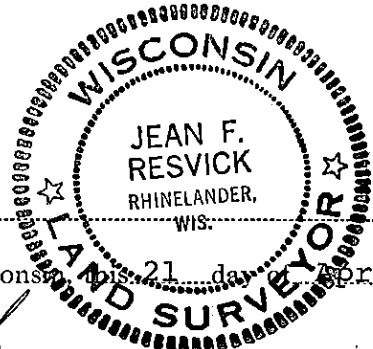
Reference to the following new blazed and scribed bearing trees.
Black Spruce 8, S29E, 45.16 feet
Balsam 7, S3W, 43.65 feet
Set steel sign post, 1.0 feet SW of monument.

43914130000



● - Corner monument restored
□ -

Resident witnesses.....
Dated at Rhineland Wisconsin 21 day of April 19 76.
Signature Jean F. Resvick Title Land Surveyor
(County Surveyor, Registered Land Surveyor, or other duly authorized official)
Surveyors Registration No. S-802 DOCUMENT NUMBER 109601
Office of Register of Deeds County of Forest
I hereby certify that the within instrument was filed in this office for record on the 2nd day of July 19 76, and was filed in Book No. _____ Page No. _____ of County Records.
Signature Eugene Stutzman Title Register of Deeds
Township 39 North, Range 14 East, Section 24 Index No. N-25, Page No. _____



N25

U.S. PUBLIC LAND SURVEY MONUMENT RECORD

Index No. N-25

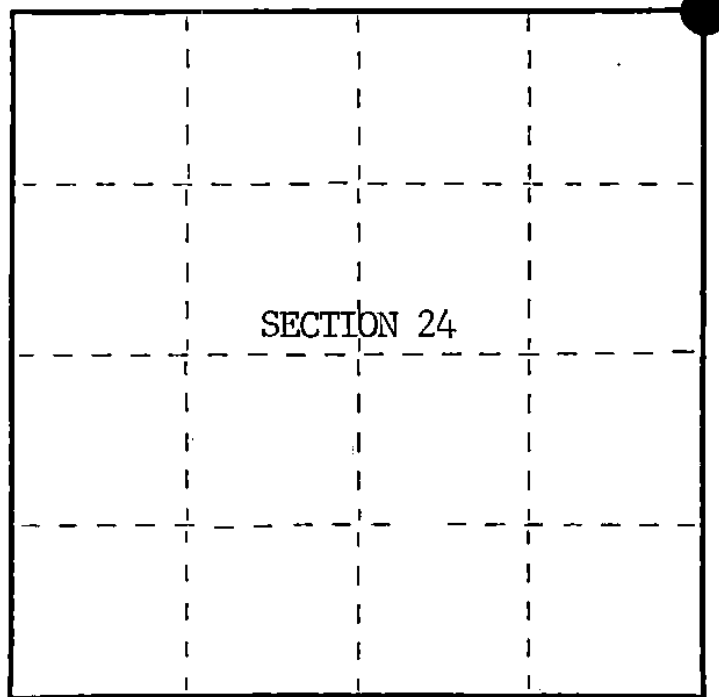
State of Wisconsin }
County of Forest } ss.

I, William B. Cochran, do hereby
certify that on the 12th day
of September, 1985, I found
evidence of the Northeast Section
corner of Section 24
Township 39, North, Range
14 East, Fourth Principal Meridian,
as described hereon; and that from this evidence
I established a new monument and accessories
as described hereon to perpetuate the original
location of this corner.

Resident witnesses:

Tony Tillman

State Plane Co-ordinates
N- 253,180.5425
E-2,337,466.1450



○ = Corner monument restored.

History of original corner establishment:

Original Government Survey in 1858 by Artemas Curtis.

Corner restored on November 3rd, 1975, by Jean Resvick, a Registered Land Surveyor
with the U.S. Forest Service.

See Certified Land Corner Resoration Certificate #108601, filed in the Registrar
of Deeds Office, in the Forest County Courthouse.

Description of corner evidence found:

Found monument as described and in place, from which the following bear;

B. Spruce	11"	S29°E	45.16 feet
Balsam(Blowdown)		S 3°W	43.65 feet
Steel Sign Post		SW	1.00 feet

All of the above bearing trees were cut down for the Aerial Photo Project.

Description of monument and accessories I established to perpetuate the original location of this corner.

Blazed and scribed the following new bearing trees;

W. Birch	10"	S40°E	78.30 feet
W. Birch	10"	S 3°E	43.65 feet
Tamrack	8"	N28°W	85.36 feet

Dated at Hiles, Wis., this 5th day of February, 1986

Signature: William B. Cochran Title: Land Surveyor Registration No. S-1107
(County Surveyor, Registered Land Surveyor, or other duly authorized official)

Office of Register of Deeds, County of Forest, I hereby certify that the within
instrument was filed in this office for record on the 11th day of March, 1987
at 3:30 o'clock P. M.

Paul A. Schenck
(Register of Deeds)

By Deputy

FORM NO. 985-A
H.C. Miller Company

Stock No. 26273

DOCUMENT NUMBER 132368

43914130000

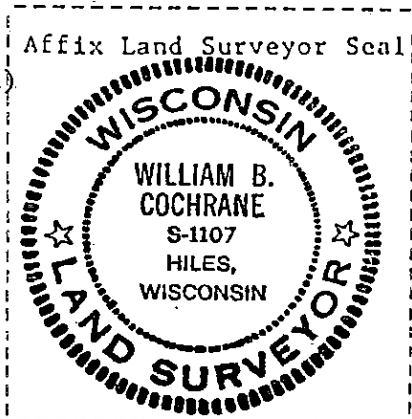
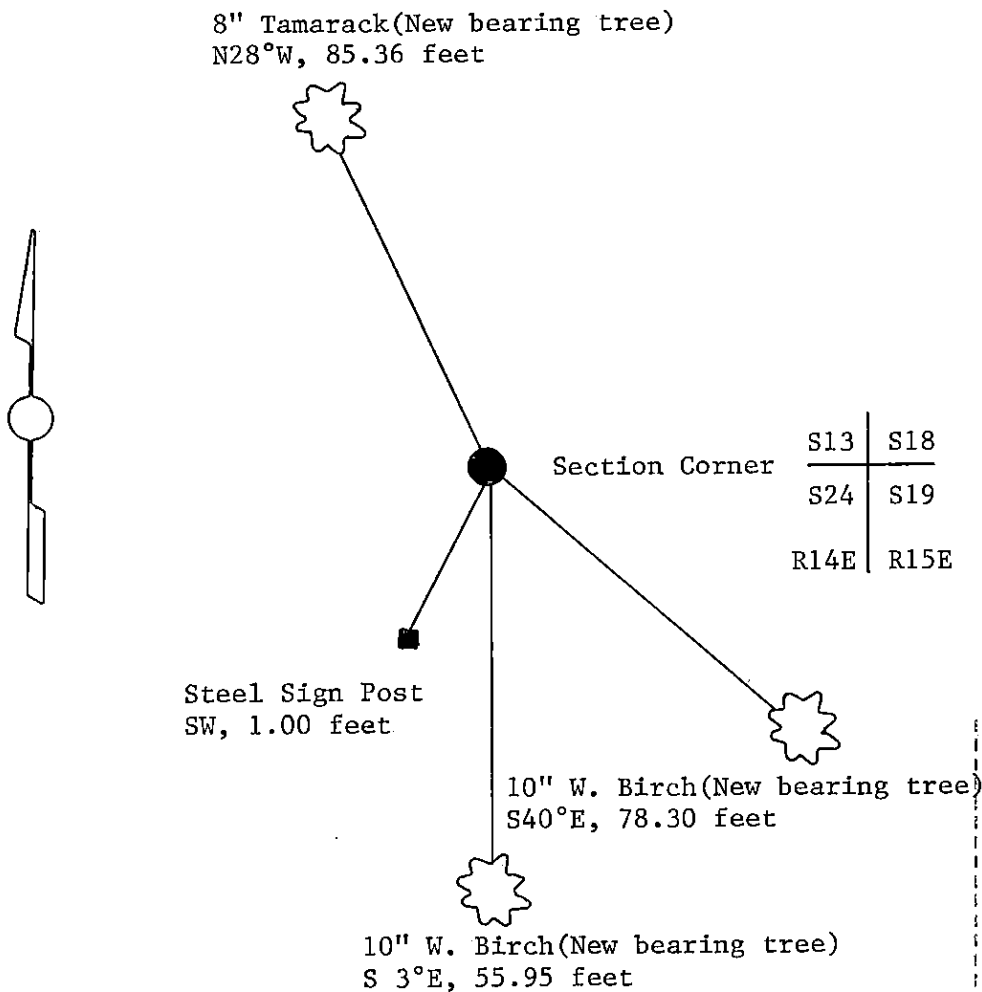
(e) Describe any material discrepancy between the location of the corner as restored or reestablished and the location of that corner as previously restored or reestablished by distance and direction. Show the discrepancy on the plan view drawing under (d), above. Show the distances between the corner as previously restored or reestablished and (1) the corner as restored or reestablished, and (2) to at least 2 of the witness monuments shown on the drawing in (d), above.

See drawing below.

(f) Was the corner restored through acceptance of (1) an obliterated evidence location, or, (2) a found perpetuated location?

Restored through acceptance of a found perpetuated location.

(g&h) Was the corner reestablished through lost corner proportionate methods? If so, show the method, including the directions and distances to other public land survey corners used as evidence or used for proportioning in determining the corner location?



(i) I, William B. Cochrane
(type or print name) certify that the corner location shown on this record was determined by me or under my direction and control and that this U.S. Public Land Survey Monument Record is correct and complete to the best of my knowledge and belief.

William B. Cochrane October 7, 1986
Signature Date

Survey requested by; Edward Dager 3-9-87
District Ranger Date